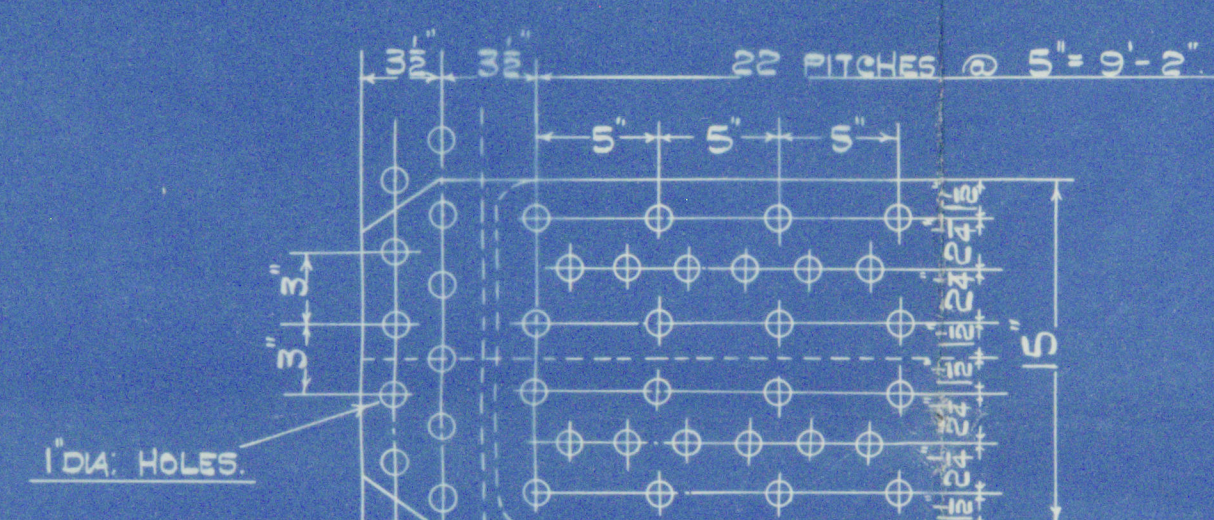
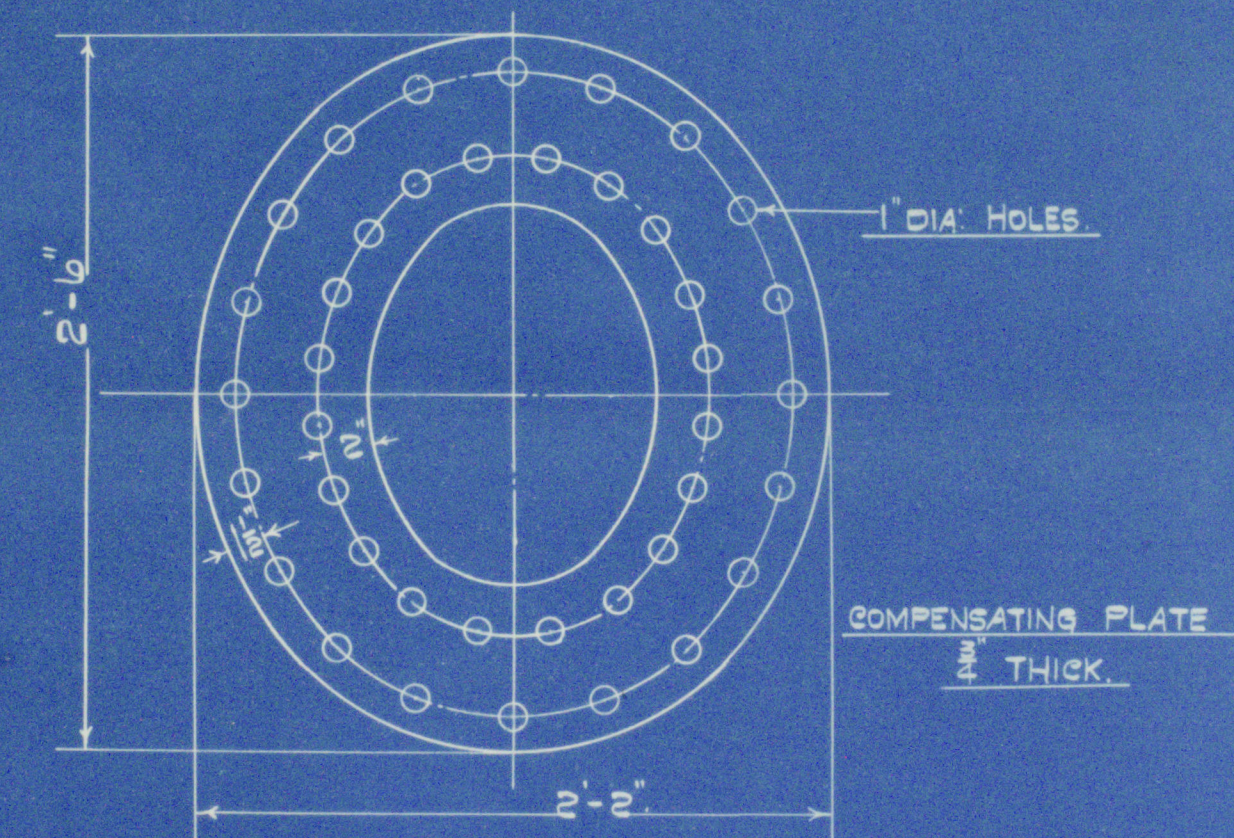


TESTS OF MATERIAL	
SHELL PLATES	28-32 TONS
BUTT STRAPS	28-32 "
COMP. PLATE	28-32 "
GIRDERS	28-32 "
LONGITUDINAL STAYS	28-32 "
SERP	24-30 "
END PLATES	24-30 "
ALL FLANGING PLATES	24-30 "
FURNACES	24-30 "

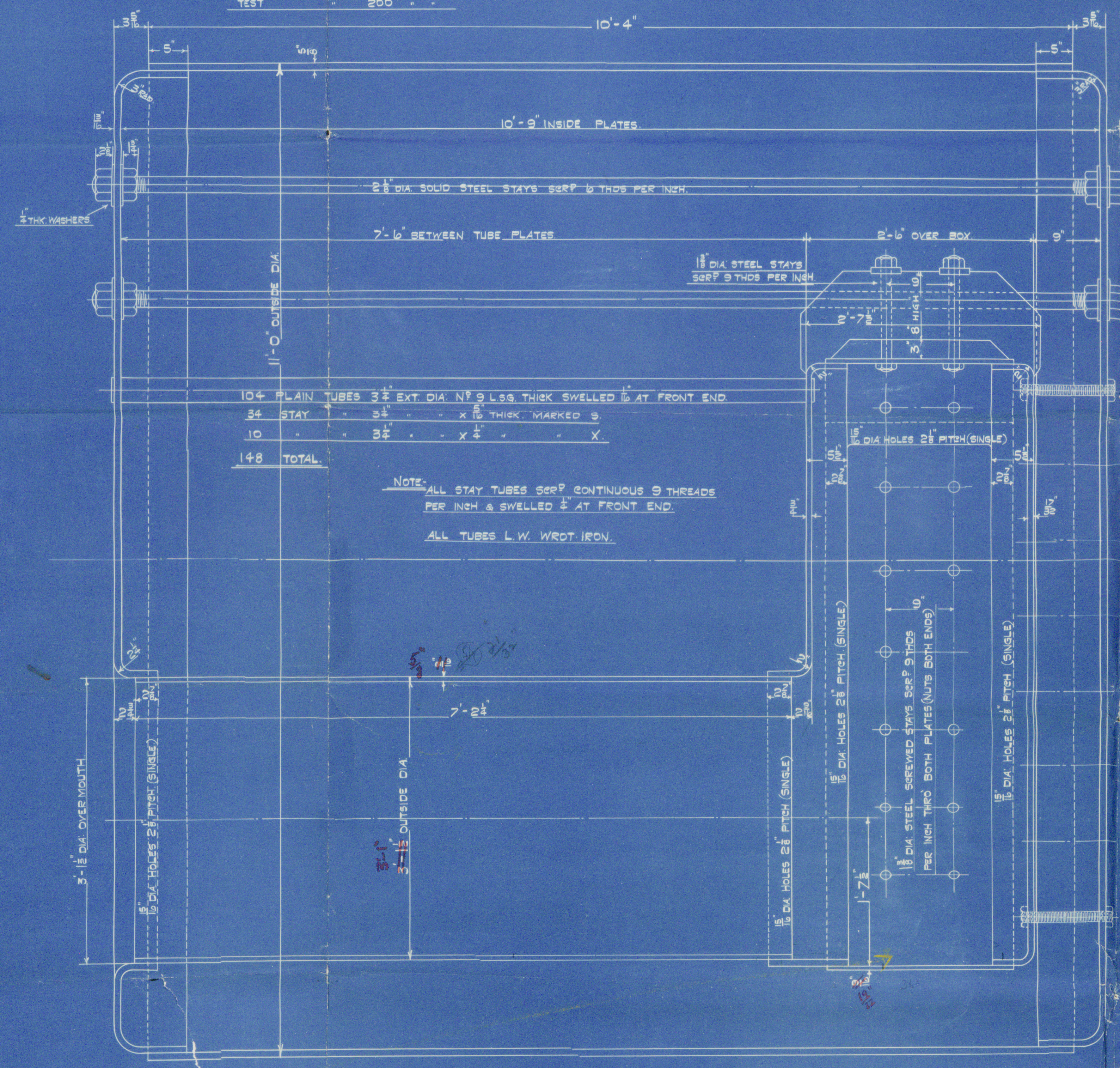
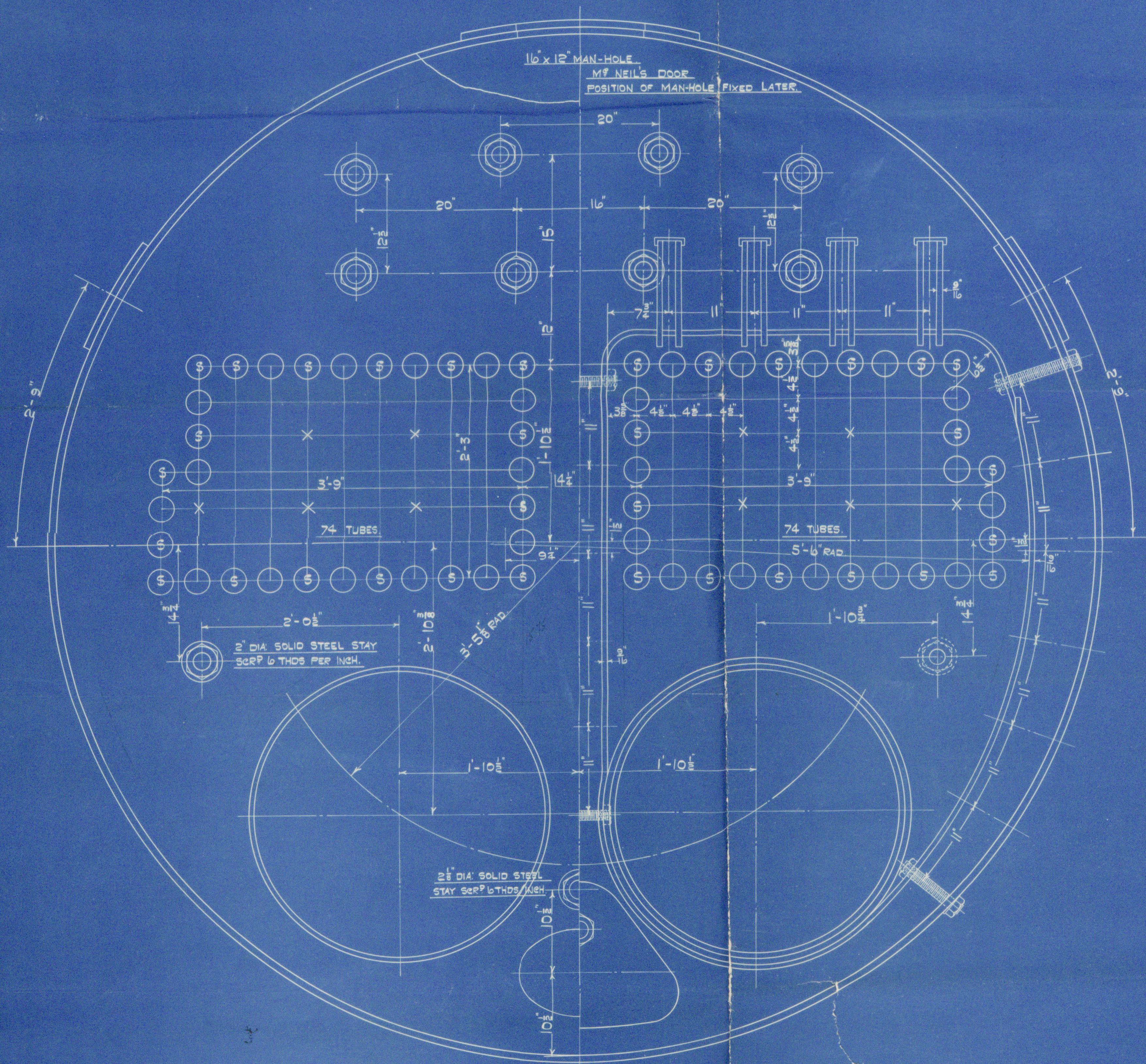
HEATING SURFACE OF TUBES	944.4
FURNACES	86.0
SIDES & TOP	78.0
BACKS	40.0
BACK TUBE PLATES	28.0
FRONT	18.0
TOTAL	= 1200.4

GRATE AREA (5'-6" BAR) = 33.6

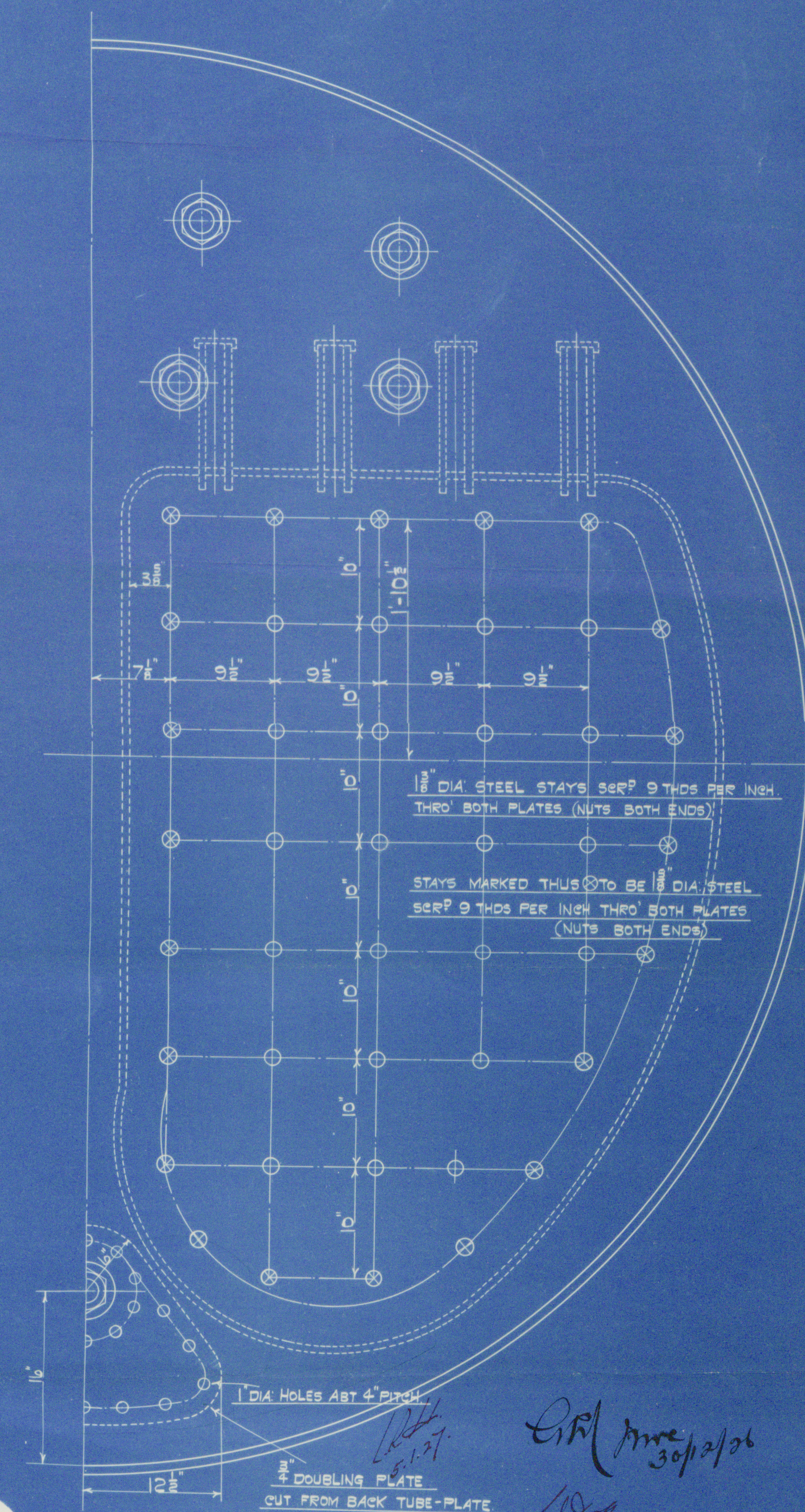


DOUBLE BUTT STRAPS 3/8" THICK INSIDE, 1/2" THICK OUTSIDE.  
1" DIA HOLES 5" PITCH. ALL HOLES DRILLED IN PLACE.

TENSILE STRENGTH OF SHELL & BUTT-STRAPS 28-32 TONS  
TO PASS LLOYD'S SURVEY.  
WORKING PRESSURE 100 LBS / SQ. IN.  
TEST 200



NOTE: ALL STAY TUBES SERP CONTINUOUS 9 THREADS  
PER INCH & SWELLED 1/2" AT FRONT END.  
ALL TUBES L.W. WROT. IRON.



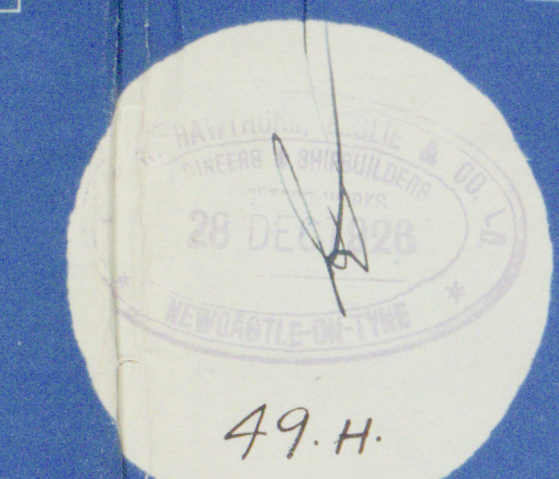
DRAWN BY  
CHECKED BY  
PASSED BY  
DATE

DRAWING NO 102.

DONKEY BOILER.

SCALE - 1/2" = ONE FOOT.

ONE OFF THIS.



ENGINE NO 3668.



Messrs  
R. W. Hawthorn Leslie & Co.  
Donkey Boiler No 3668.

W.P. 100 lbs per sq. in.

Amendments in excess of rules  
C.M.

Safey valve Lno.  $2\frac{7}{8}$ " High

S.S. Irelandy  
of  
London

---

NEWCASTLE ON TYNE.

Report No. 81827.

---

W92-0043



© 2020

Lloyd's Register  
Foundation