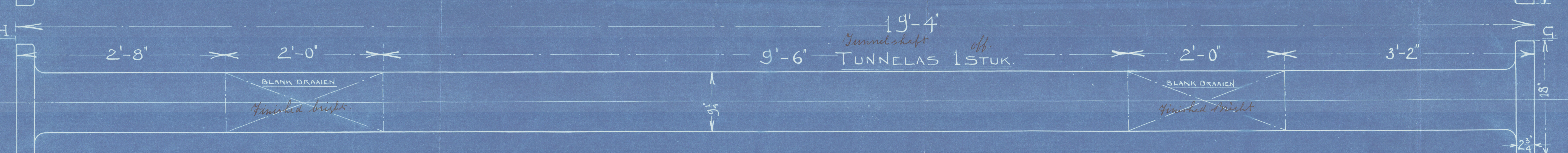
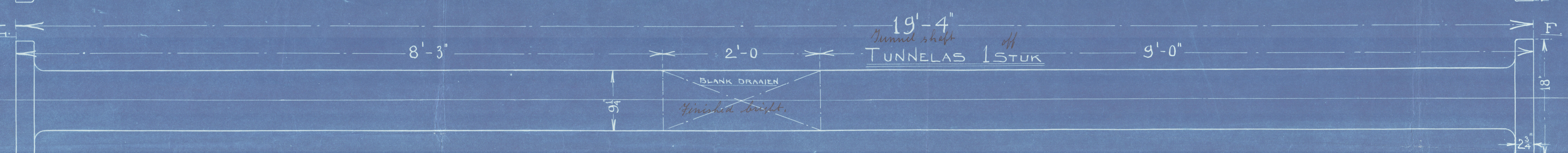
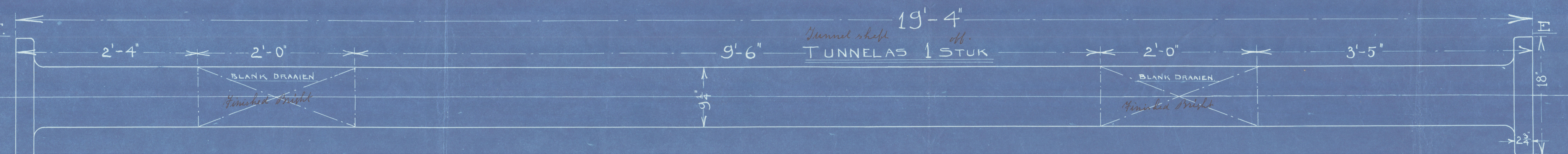
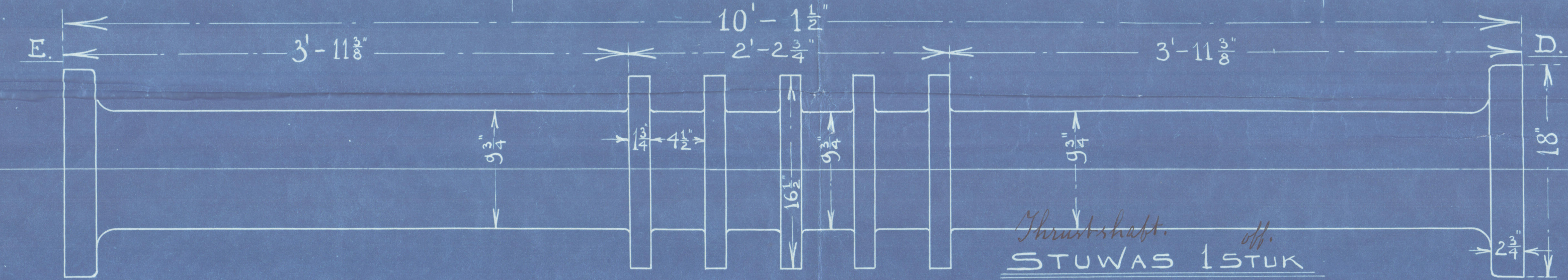
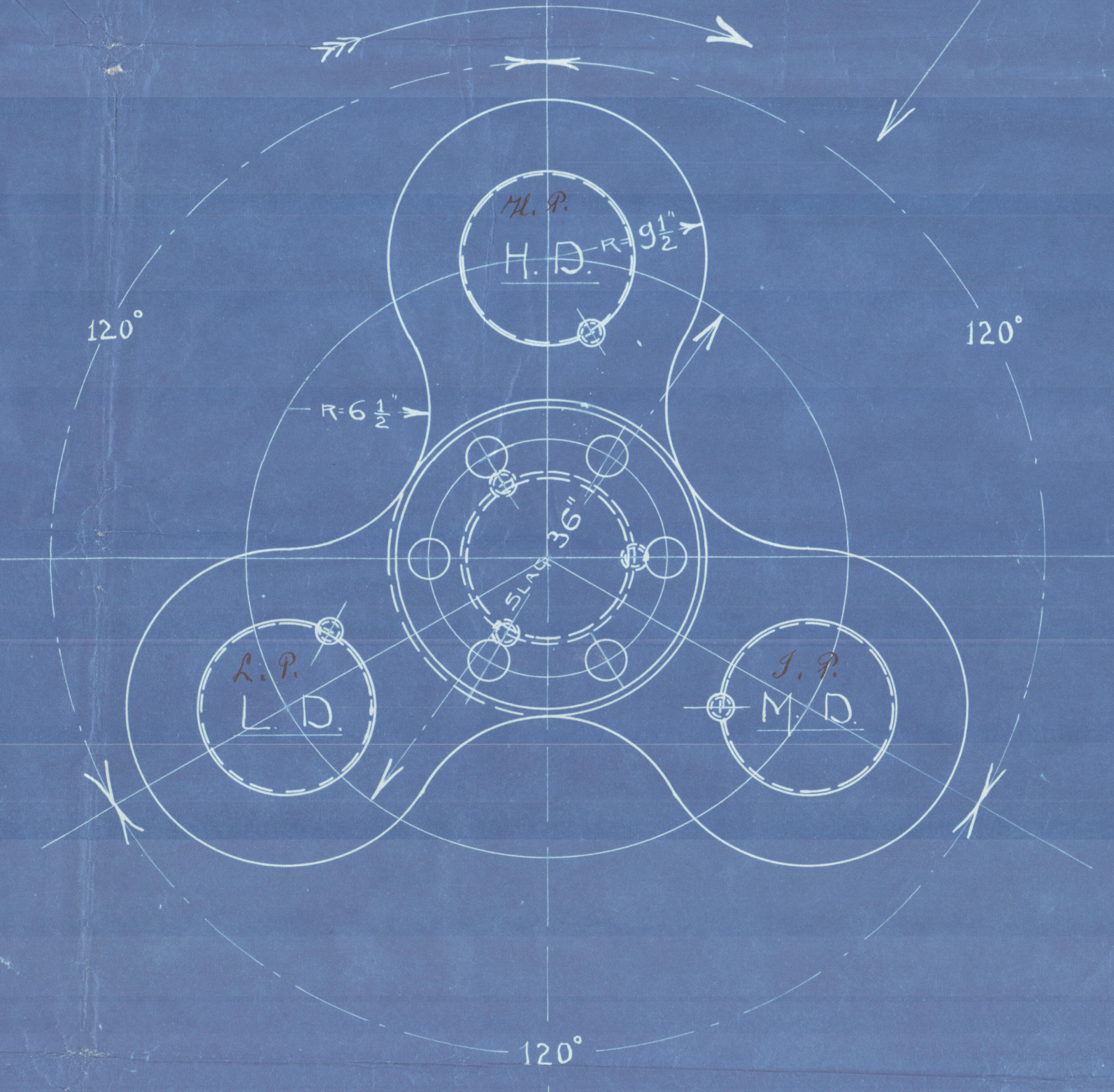
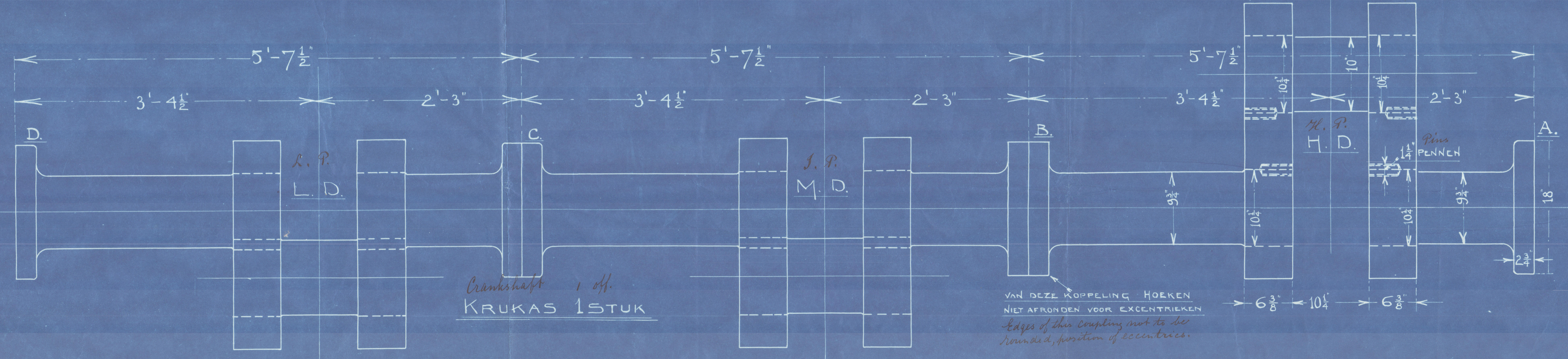
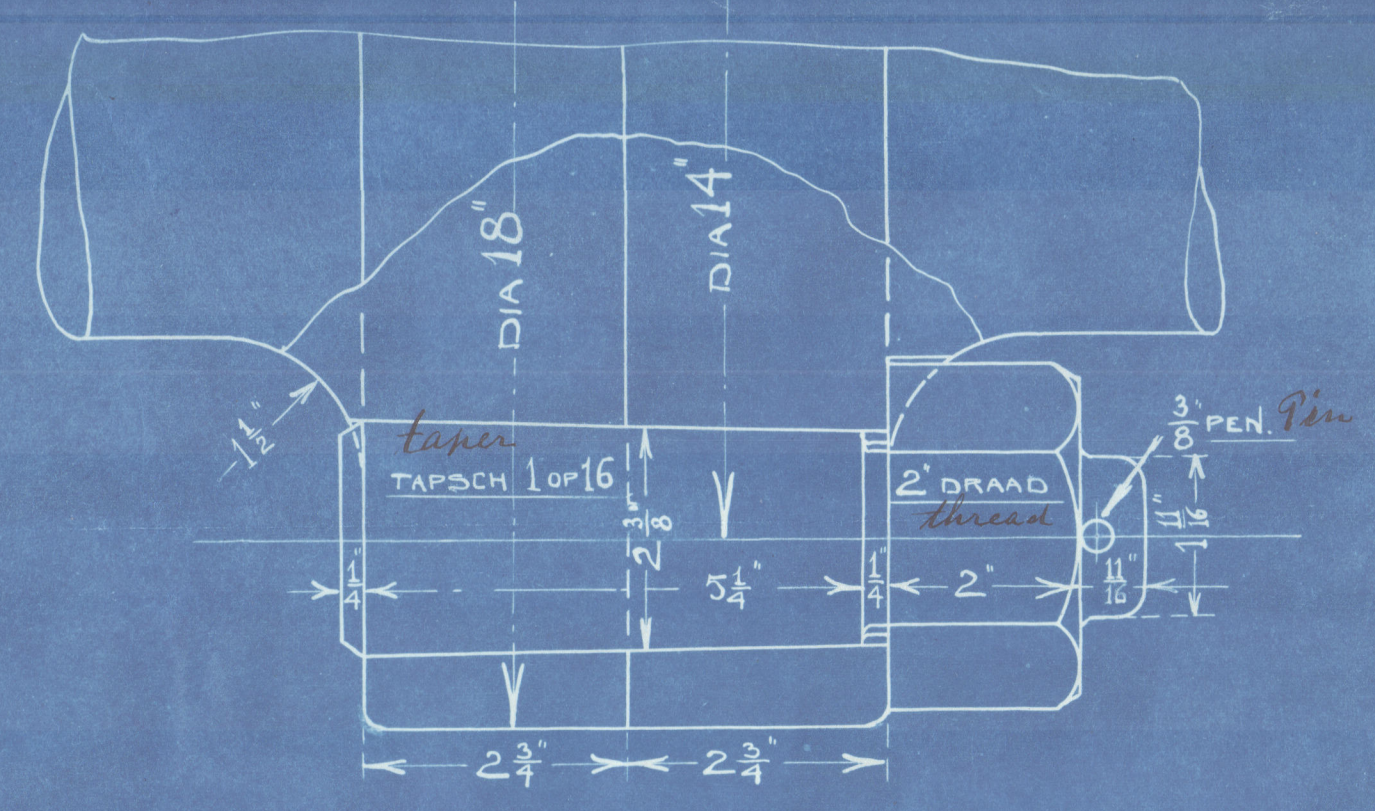
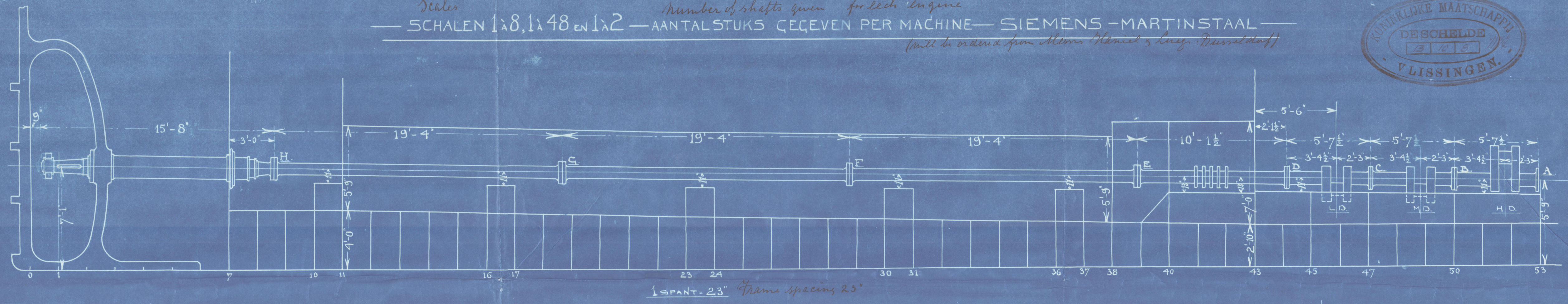


19/10/08

Shafting for Engines

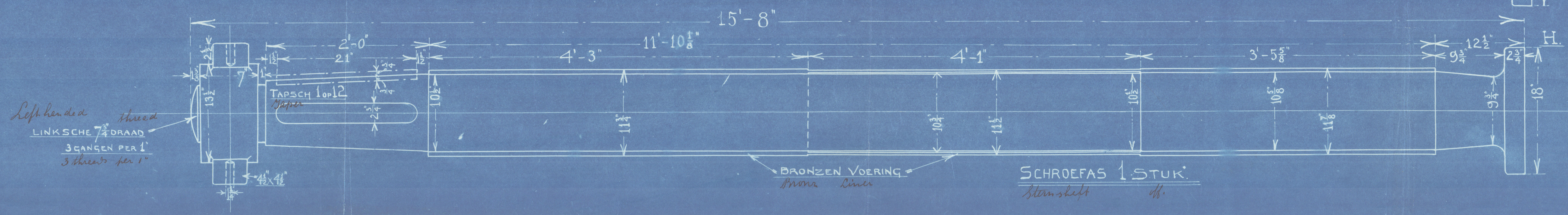
# ASSEN EN ASLEIDING VOOR MACHINES NOS 263-264

Scales 1:8, 1:48 en 1:2 — AANTALSTUKS GEGEVEN PER MACHINE — SIEMENS-MARTINSTAAL  
*(will be ordered from Messrs. Klenck & Lang, Düsseldorf)*



Diameter of Cylinders: 17 1/2", 28", 45".  
 Length of stroke 36"  
 Working pressure 180 lbs.  
 Diameter of Propeller No. 263 = 12' 6"  
 The Propeller for Engine No. 264 will be less than 12' 6"

19.10.08





RETAIN



© 2020

Lloyd's Register  
Foundation



S.S. "Driveland"  
"Schieland"  
Port of Rotterdam  
Repairs 6162<sup>8</sup>



© 2020

Lloyd's Register  
Foundation