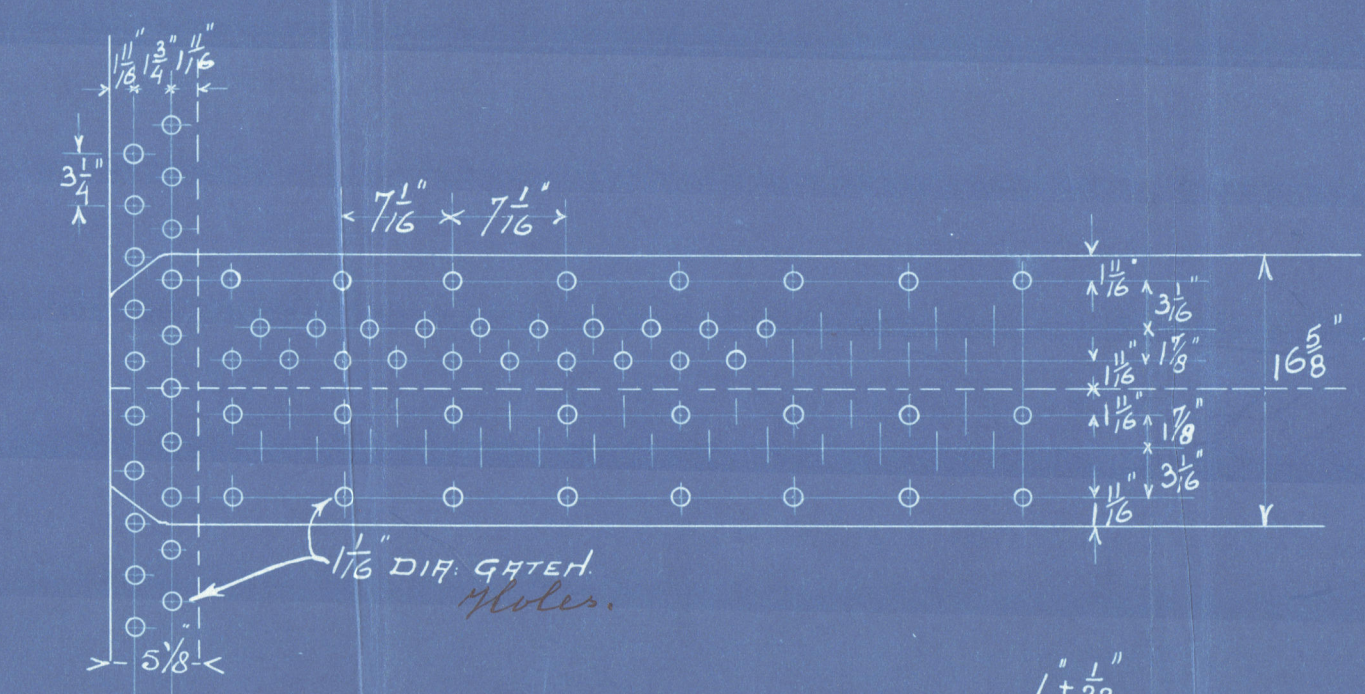


13/10/08

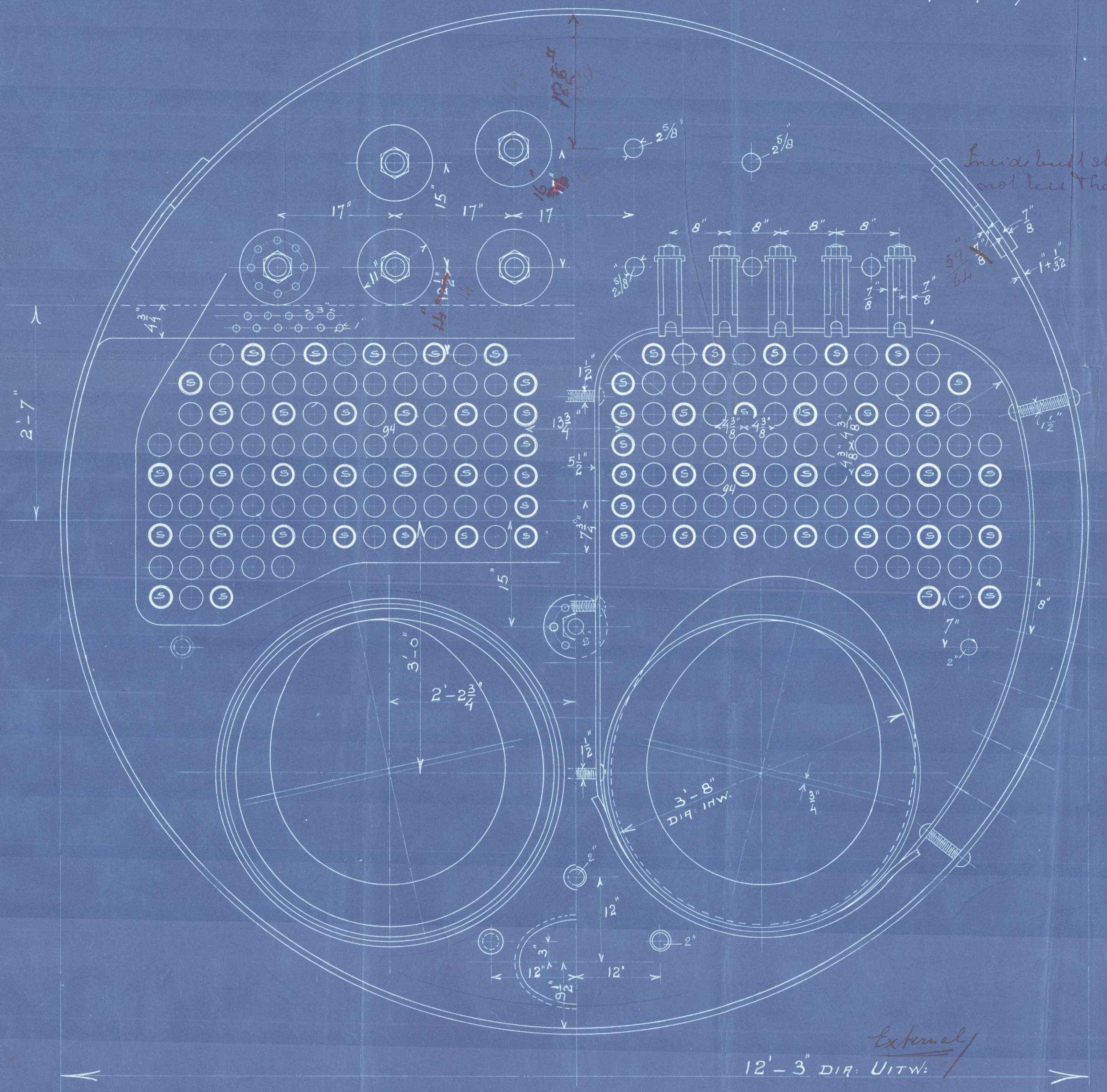
Boilers
STOOMKETELS N^o 533-534 and 535-536
all mild steel
ALLES SIEMENS-MARTIN ZACHT STAAL
Constructed to
GECONSTRUEERD VOLGENS BRITISCH LLOYD
Working Pressure
STOOMDRUK 180 LBS PER Q"ENG.
SCHAAL 1 & 12



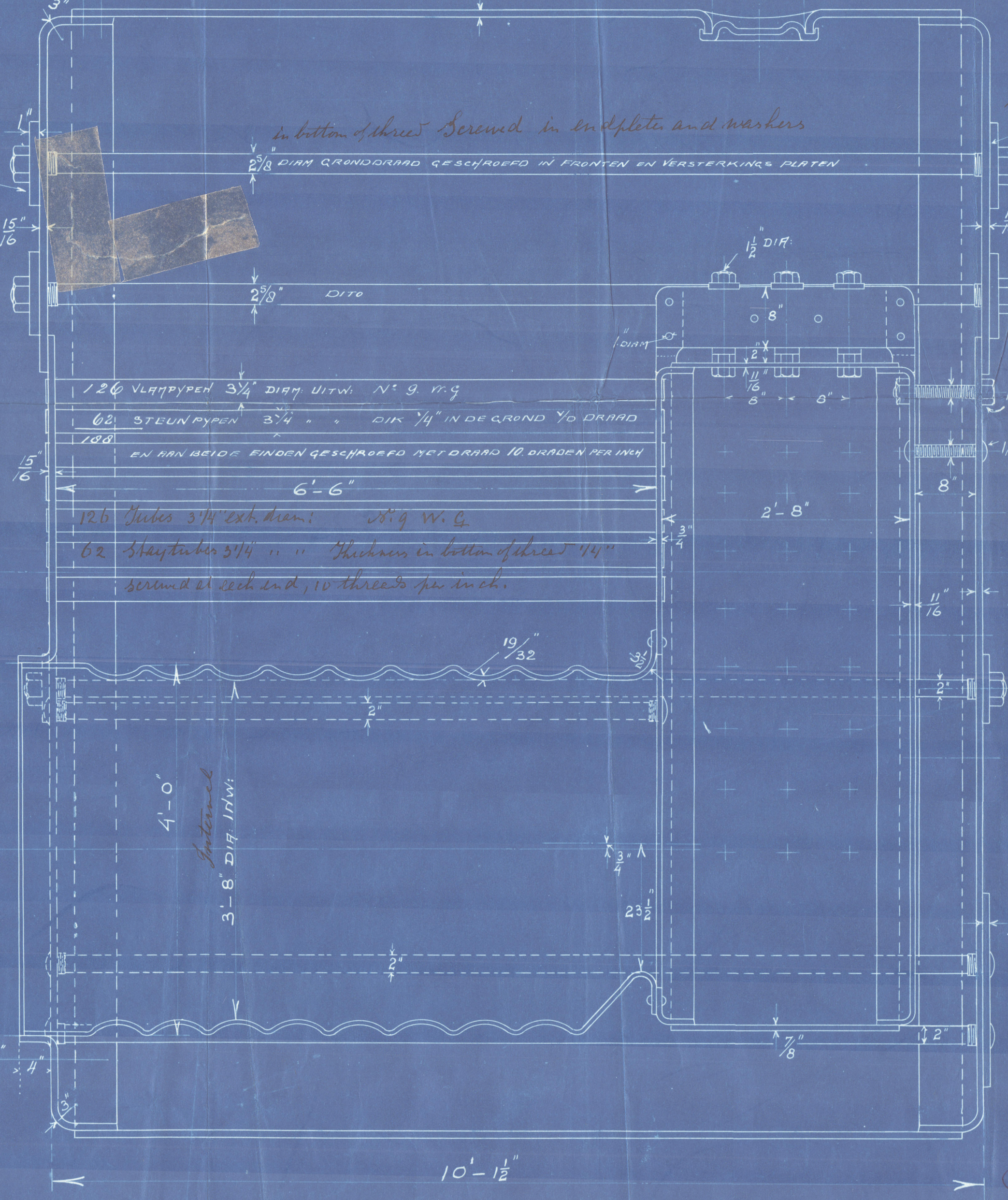
Heating Surface Tubes (ext.)
VERWARMING OPPEERVLAKE RYPER/UITWIJ: 1040 sq
" " Furnaces 77.5"
" " VLAAMKASTEN 161.5"
Total TOTAL 1279 sq
Grate Surface ROOSTEROPVL. 39.
Fire door tubes DOORTOCHT RYPER 8.5"



Minile strength of Material
MATERIAAL TREKSTERKTE
RAMP & STRIPPEN 28-32 TONS
Shell and tube sheets
FRONTEN-VLAAMKAST PLATEN EN STEUNEN... 26-30 TONS
In plates, Comb. ch. plate and stays.



Hydr. riveted
HYDROLISCH
OPGEKLOKKEN
Screw head sleep tube
not less than 59 1/2 thick
6 1/2



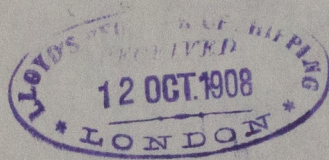
Hydr. riveted
HYDROLISCH
OPGEKLOKKEN



APR 13.10.08
13.10.08

S. S., Duiveland &
Schiedam
Main boilers

Port of Rotterdam
Report No. 6162⁶



© 2020

Lloyd's Register
Foundation

1915-0104