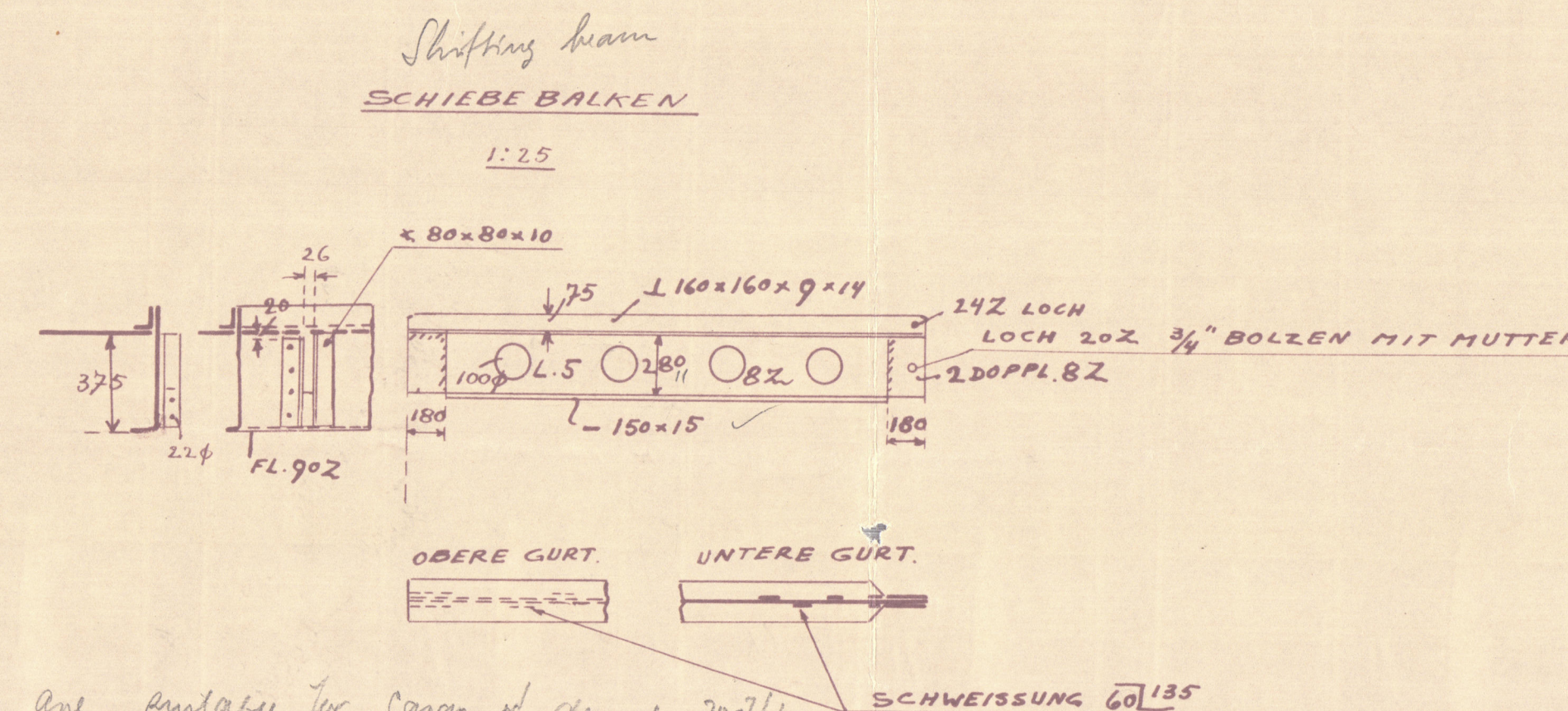
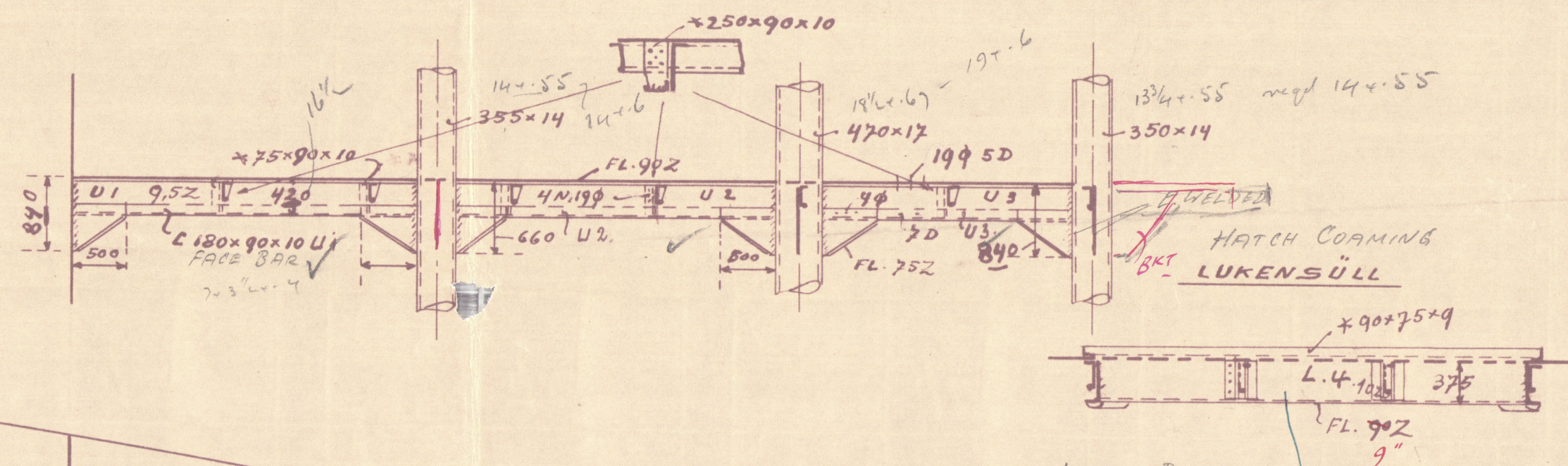


ORLOP DECK
LADUNGSDECK

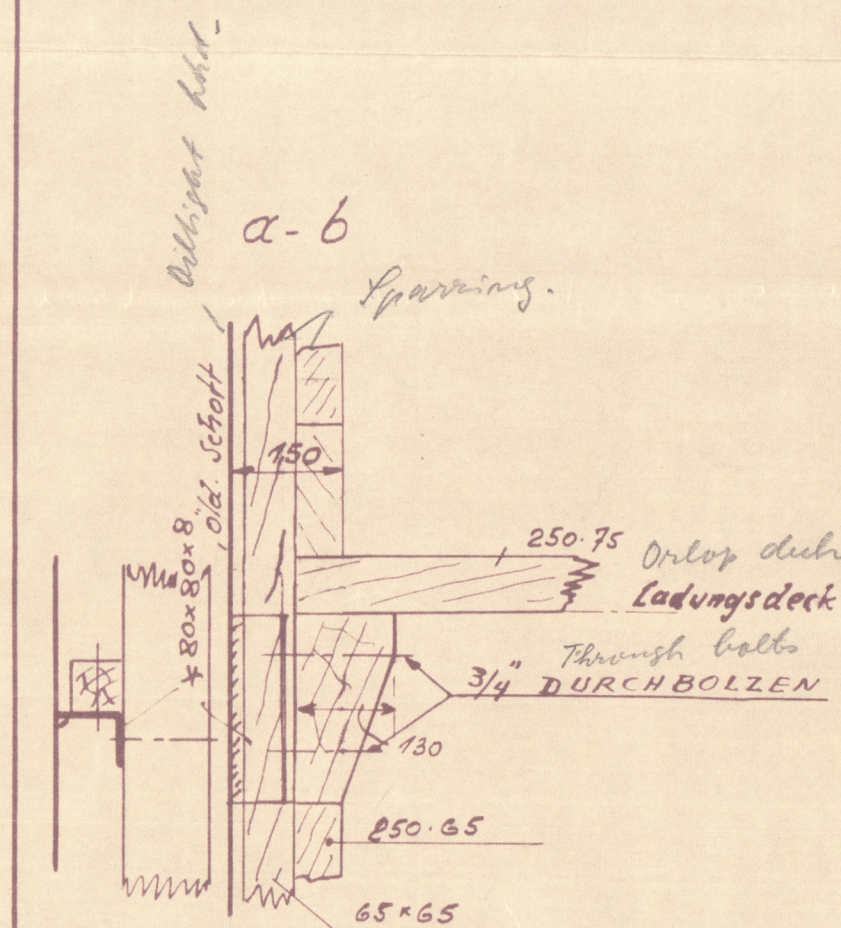
1:50

[illegible]

Plating
PLATTEN.

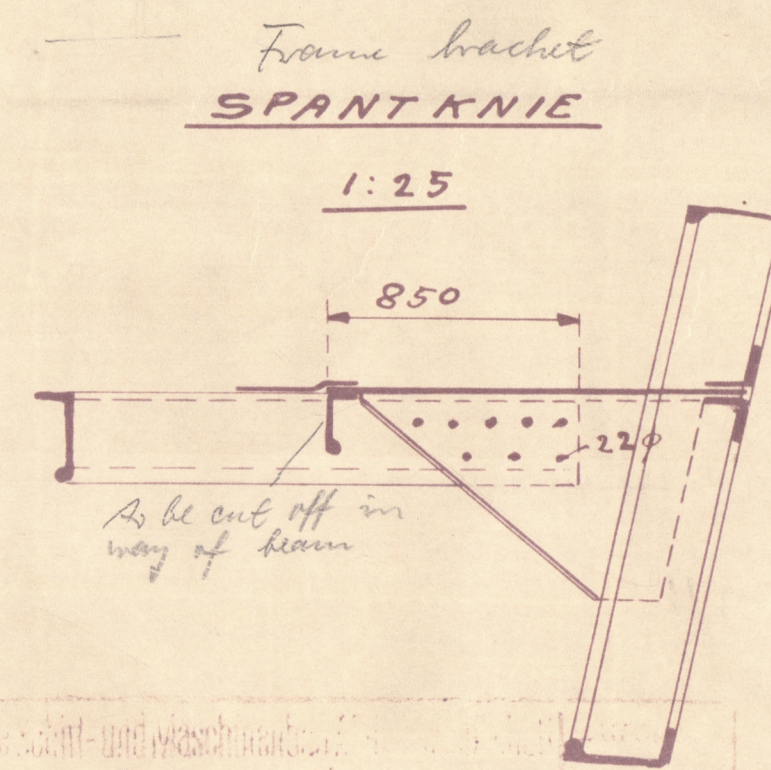
Blanus & Angle
PROFILE.

Marke	Stück	Länge	Breite	Dicke	Bemerk.	Marke	Stück	Länge	Prof. l.	Bemerk.
U i	2	3250	540	9,5			2	10900	5300.90.13	Teich. Sch. 108
+ 2	2	3000	540	"		SSR.	2	9600	5320.100.14	" 110
+ 3	2	2350	540	"	unterzug		2	10250	5300.90.13	" 112
+ 4	2	3400	400	10		ST. 2/35	1	9000	5320.100.14	" 114
+ 5	2	3200	"	"			1	9000	5300.90.13	" "
+ 6	2	2800	"	"			2	5900	"	" 116
L 1	2	4750	300	8		STS 36	2	3400	"	" "
+ 2	2	"	700	8		ST 2/136	1	8350	5320.100.14	" 118
+ 3	2	2250	300	"	huke.	+ 2/137	1	8250	"	" "
+ 4	4	4300	550	10			2	5900	5280.90.15	" 120
+ 5	4	2100	280	8			2	2800	"	" "
15.10.2				19	Korablacke		2	4600	"	" 122
						SS. 85	2	5000	5320.100.14	" 124
						"	2	6050	"	" 126
						II. 0.87/4	3	6800	5320.100.13,5	" 128
						"	2	5100	"	" 130
						SSR	2	5500	5320.100.14	" 132
						OB. 20	2	6000	"	" "
						"	2	5900	"	" "
						U i	2	3250	5180.90.10	kontaining
						+ 2	2	3000	"	"
						+ 3	2	2350	"	"
						6 4/10m			+ 90.75.12	Lugs 2
						4		4200	+ 90.75.9	Renn + Linsen
								3200	"	"
						6 4/10m			+ 80.80.16	Schleusenbahn
						2		2800	- 120.10	Fl. 134
						2		2100	I. 160.160.9,4	Schleusenbahn
						4		1800	- 150.15	"

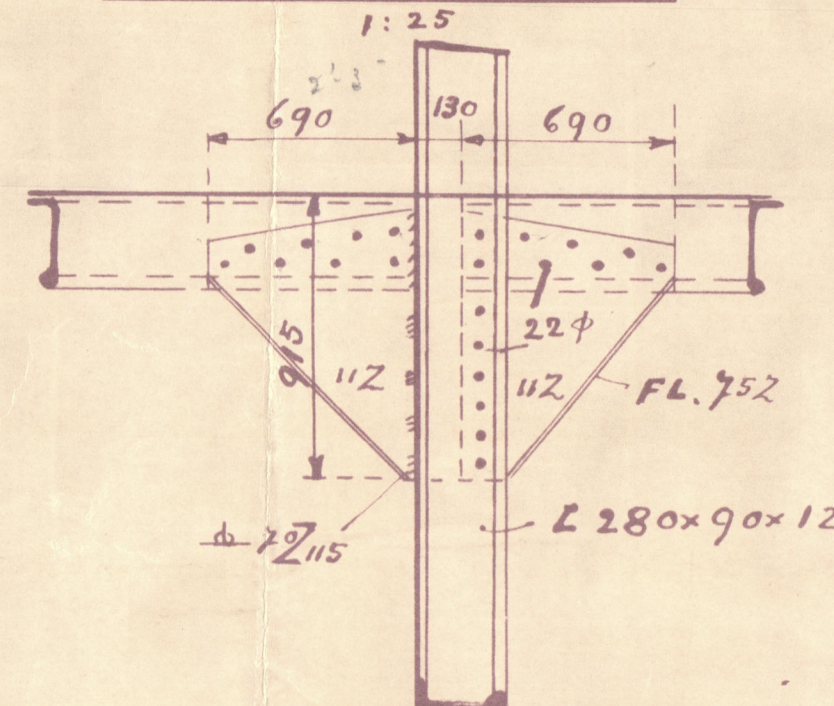


WOOD BELAG 250x75, JEDE 3. PLANK E IST MIT
3x 5/8" SCHRAUBEN ZU BEFESTIGEN, DIE DAZWISCHEN
LIEGEND. SIND EINZUPASSEN

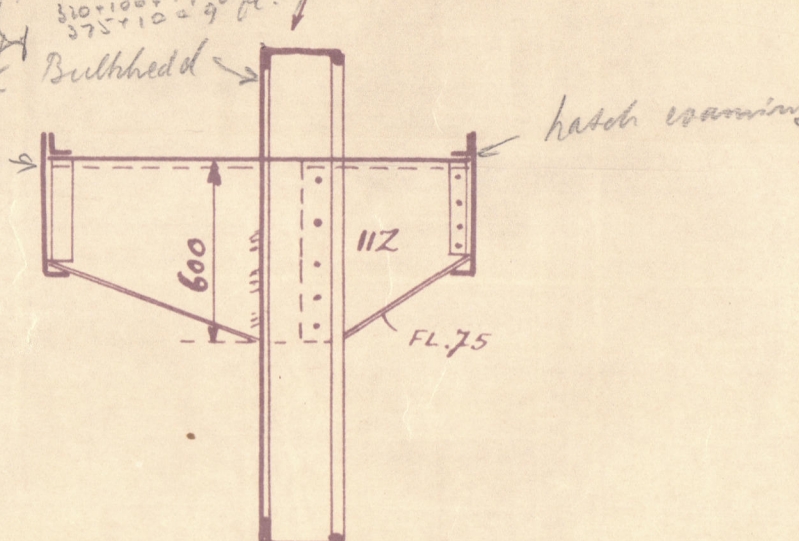
WOOD DECK 3" THICK, EVERY 3RD PLANK TO BE BOLTED
BY 3 BOLTS OF 9/8" DIAM. ALL OTHER TO FIT IN WITHOUT FRAMING



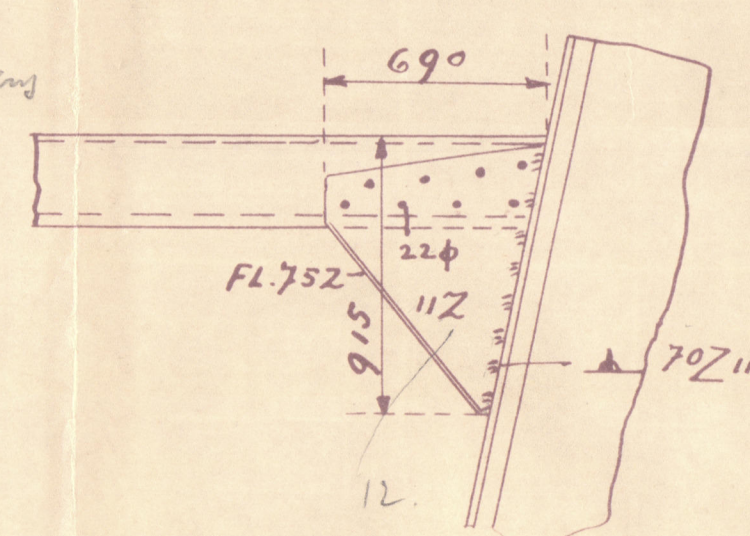
Brachet at Centre Line
KNIE AUF MITTE SCHIFF



Libellula eximia.



Broken in way of web forms
KNIE AM RAHMEN SPANT
1:25



Freno spacing 6857-
SPANTENTFERNUNG 6852

JKb
22/9/34



WHALE OIL FACTORY "TERJE VIKEN"
— TWEENDECK IN DRY CARGO HOLD No. I. —

PROPOSED BY DEICHMANN WERK A. G. WESER, BREMEN.

PLAN No 3009

BREMEN LETTER M OF 9.9.37.

W91-0123



© 2020

Lloyd's Register
Foundation