

## EQUIPMENT.

2 BOWER ANCHORS STOCKLESS WEIGHT	38 3/4 CWT = 4340 LBS.
1 BOWER ANCHORS	32 1/2 CWT = 3640 LBS.
1 STREAM ANCHOR	12 1/2 CWT = 1400 LBS.
1 KEDGE ANCHOR	6 1/4 CWT = 700 LBS.
240 FATHOMS 1 1/8" STUD CHAIN CABLE	
75 " 1/8 " OR 4 1/4" STEEL WIRE ROPE	
1 Tow LINE 90 FATHOMS 12" HEMP OR 4 " "	
2 HAWKERS 90 FATHOMS EACH 1" HEMP OR 2 1/2" STEEL WIRE ROPE	
2 " " " 6 " " 2 1/4 " "	

## PRINCIPAL DIMENSIONS.

LENGTH OVERALL	261' 0"	LENGTH AS PER RULE	L = 253' 0"
BETWEEN PERPENDICULARS	253' 0"	BREADTH	B = 43' 5"
BREADTH MOULDED	43' 6"	DEPTH	D = 27' 5"
DEPTH TO UPPER DK.	27' 6"		
POOP DK.	35' 0"		

TRANSVERSE NUMBER  $B+D = 71$   
 LONGITUDINAL  $L[B+D] = 17963$   
 EQUIPMENT  $17963 + 802 = 18765$   
 $L = 253 \cdot 9.2$   $B = 43.5 \cdot 5.82$

BUILT TO CLASS  $\dagger$  100-A-1-LLOYDS.

## RIVETING SCHEDULE.

## SHELL:

A STRAKE-QUADRUPLE RIV. BUTTS. 1/2 L AMIDS. TREBLE RIV. STRAPS AT ENDS.  
 TREBLE RIV. BUTT LAPS. 3/4 RIV. WHERE PLATING 195° AND OVER. 3/4 RIV. AT ENDS.

ALL EDGE LAPS DOUBLE RIVETED.

SIDE PLATING OF POOP & FORECASTLE DOUBLE RIVETED BUTTLAPS 3/4 RIVETS.  
 FORECASTLE SGL. RIV. EDGE LAPS.  
 POOP SGL. RIV. EDGE LAPS EXCEPT 20'-0" AT POOP BHD WHERE THEY MUST BE DBL RIVETED.

## SPACING OF RIVETS IN SHELL.

RIV. SPACED 4" IN QUADRUPLE RIVETED BUTTS.

1"	3 1/2"	TREBLE	4" IN EDGE LAPS.
3/8"	3 1/2"		3 1/2"
3/4"	2 5/8"		3"

FRAMES TO SHELL: 3/4 RIVETS SPACED 4 1/2"  
 1/8 RIVETS SPACED 5 1/4" EXCEPT IN

BOTTOM FORWARD OF 3/8 L AMIDS WHERE  
 THEY ARE 4 1/2" FOR 8 RIV. IN PEAKS 3/4 RIVETS SPACED 3 1/2".

FRAMES TO FLOORS: REV. FRAMES TO FLOORS: SIDE STRINGERS  
 TO FLOORS: 3/4 RIVETS SPACED 5 1/4".

FLOORS TO CENTER VERT. KEEL 3/4 RIV. SPACED 3 1/2".

DECKS: UPPER DECK STRINGER TREBLE RIVETED BUTT LAPS  
 1/2 L AMIDS. DBL RIVETED AT ENDS. 3/4 RIV. 2 5/8" APART.

UPPER DK PLATING DBL RIVETED BUTT LAPS 1/2 L AMIDS  
 SINGLE RIVETED AT ENDS. 3/4 RIVETS, 3" APART.

ALL EDGE LAPS SINGLE RIVETED. 3/4 RIVETS SPACED 3 1/2"  
 POOP & FORECASTLE DECK STRINGER PLATES DBL

RIVETED BUTT LAPS. 3/4 RIVETS SPACED 2 5/8".  
 BALANCE OF PLATING OF POOP DK DOUBLE RIVETED

BUTT LAPS. SGL RIVETED AT AFT END. 3/4 RIVETS, 3" APART.  
 BALANCE OF FORECASTLE PLATING SINGLE RIVETED

BUTT LAPS. 3/4 RIVETS SPACED 3".  
 ALL EDGE LAPS SINGLE RIVETED 3/4 RIVETS SPACED 3 1/2".

DECK PLATING TO BEAMS 3/4 RIVETS, SPACED 5 1/4".  
 GUNWALE BAR ON UPPER DK 1/8 RIV. SPACED 4" IN EACH ROW.

WING TANK PLATING SINGLE RIV. EDGE LAPS, DOUBLE  
 RIV. BUTT LAPS 3/4 RIVETS SPACED 3".

HATCH GIRDER PLATE TREBLE RIV.

WT. BULKHEADS WHERE BHD PLATES ARE RIVETED  
 TO FLOORS LAPS TO BE DOUBLE RIVETED. BUTTS SGL.

RIV. EDGE LAPS SGL RIV. 3/4 RIV. SPACED 3 1/2". IN BHD  
 FRAME SPACED 3 1/2". IN BHD STIFF SPACED 5 1/4".

INNER BOTTOM, CENT. VERT. KEEL TREBLE RIV. BUTT LAPS  
 RIDER PLATE TREBLE RIVETED BUTT LAPS 1/2 L AMIDS.

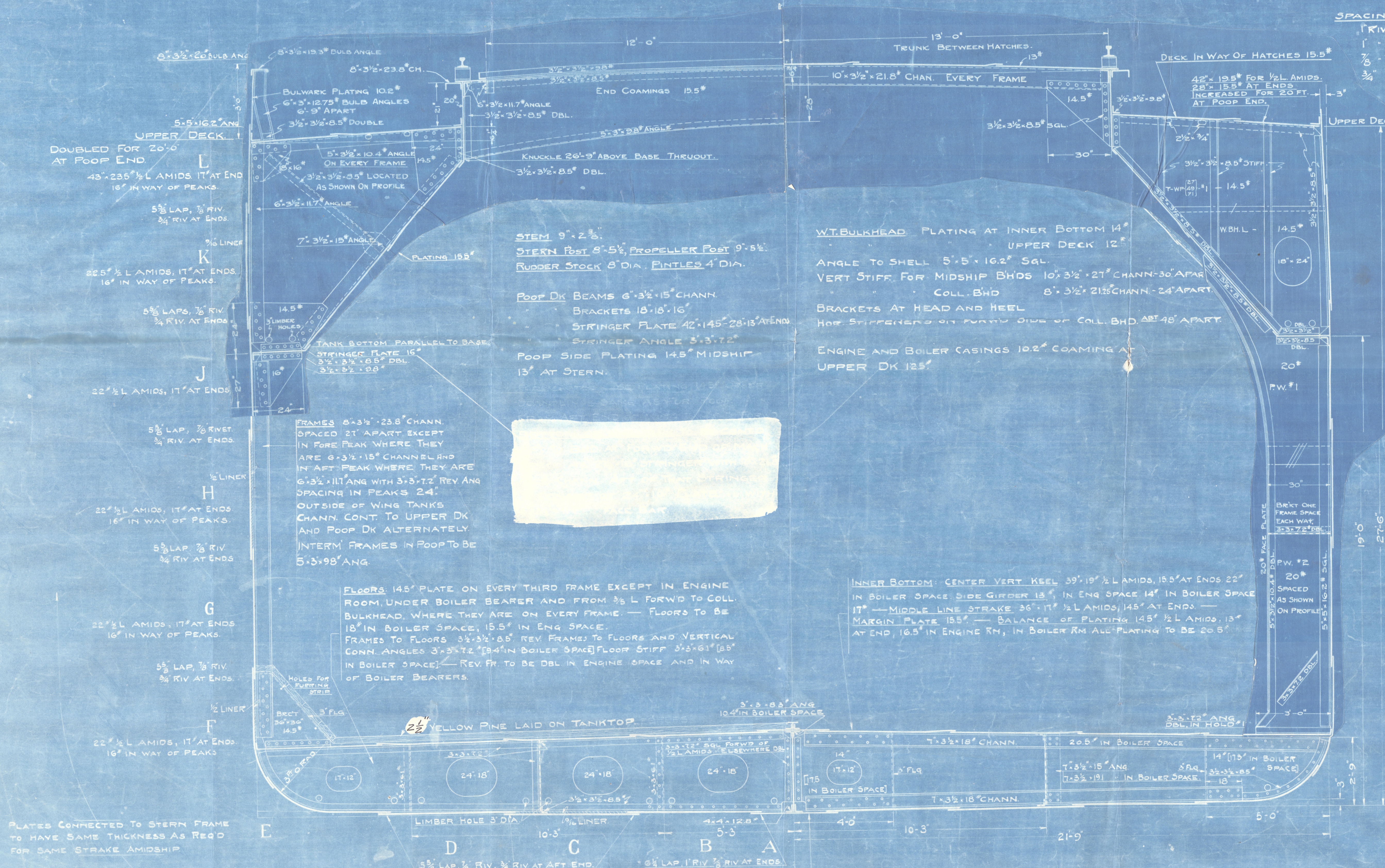
DBL RIVETED AT ENDS. EDGE LAPS DBL THROUGHOUT.  
 MARGIN PLATE DBL RIVETED BUTT LAPS THROUGHOUT.

SINGLE RIVETED FLANGE TO SHELL.  
 BALANCE OF PLATING DOUBLE RIVETED BUTT LAP 1/2

L AMIDS THROUGHOUT. SINGLE RIVETED. EDGE LAPS  
 3/4 RIVETS SPACED 3".

ANGLES CONNECTING FLOORS TO CENT. KEEL AND FLAT  
 KEEL ANGLES 3/4 RIVETS SPACED 3 1/2".

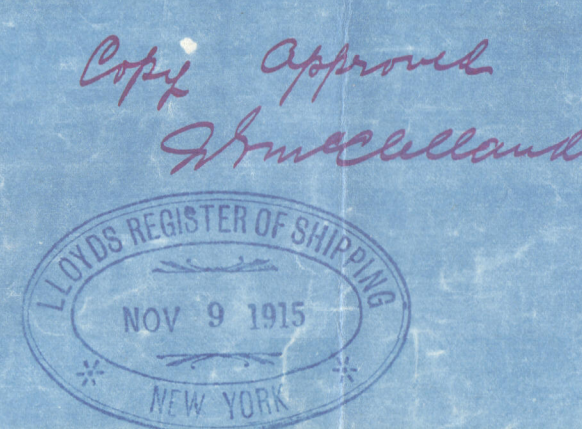
TOP ANGLES AT CENT. VERT. KEEL 3/4 RIVETS SPACED 3 1/2".  
 EXCEPT IN MACHINERY SPACE, WHERE THEY ARE 3 1/2" APART.



PLATES CONNECTED TO STERN FRAME  
 TO HAVE SAME THICKNESS AS REQD  
 FOR SAME STRAKE AMIDSHIP

BOTTOM PLATING 22.5" L AMIDS. 18" AT ENDS. 17" IN WAY OF PEAKS  
 STRAKES B.C. TO MAINTAIN THE MIDSHIP THICKNESS  
 TO COLLISION BHD.

13" - 33.5" 3/4 L AMIDS  
 24" AT ENDS



HULL No 10456

MIDSHIP SECTION.

Great Lakes Engineering Works

DETROIT, MICH.

NOV 9 1915

Lloyd's Register Foundation



104-201.

GREAT LAKES ENGINEERING  
WORKS  
NOV 2



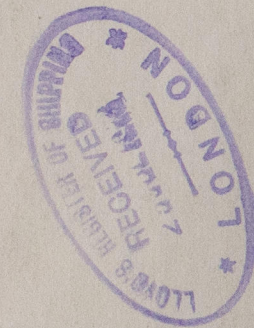
© 2020

Lloyd's Register  
Foundation



SHIP SECTION

156



8/8. Granger - Cleveland St

SHIP SECTION  
156

L110-8097



© 2020

Lloyd's Register  
Foundation