

STEEL BOILERS

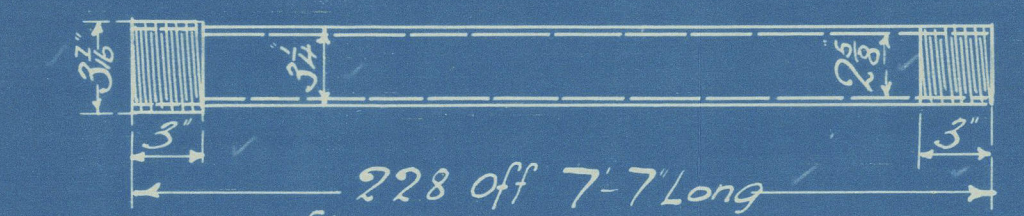
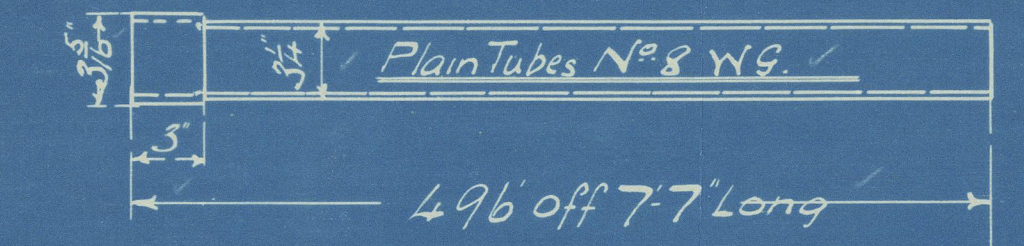
To Lloyd's Requirements for a Working Pressure of 180 lbs per sq in
All Plates, Rivets, Girders & Stays of Steel. Tubes of Wrought Iron.
Scale 1" = 1 foot

25/1/12



Heating Surface in
2 Boilers = 5415 sq ft

Dia	Thru Hole	Eff Dia	Eff Area
1 1/2	9	1.607	2.031
1 3/8	9	1.732	2.35
2	6	2.286	4.13
3	6	3.16	7.85
2 1/2	6	2.53	5.05



Stay Tubes 1/16 Thick 10 Threads per inch Eff Area. 2.255

ENGINE	DATE	FURNACES
736 2 OFF	12-1-1912	Deighton's Section
Intended for Messrs J.L. Thompson & Sons Ltd No 1491		

Longitudinal Seams Fitted With Double Butt Straps

Straps 1/16 Thick Rivet Holes 1/8 Dia Scale 1/2" = 1 foot

Tensile Strength of Shell Plates, Butt Straps

& Manhole Stiffening Rings 28 1/2 to 32 Tons per sq in

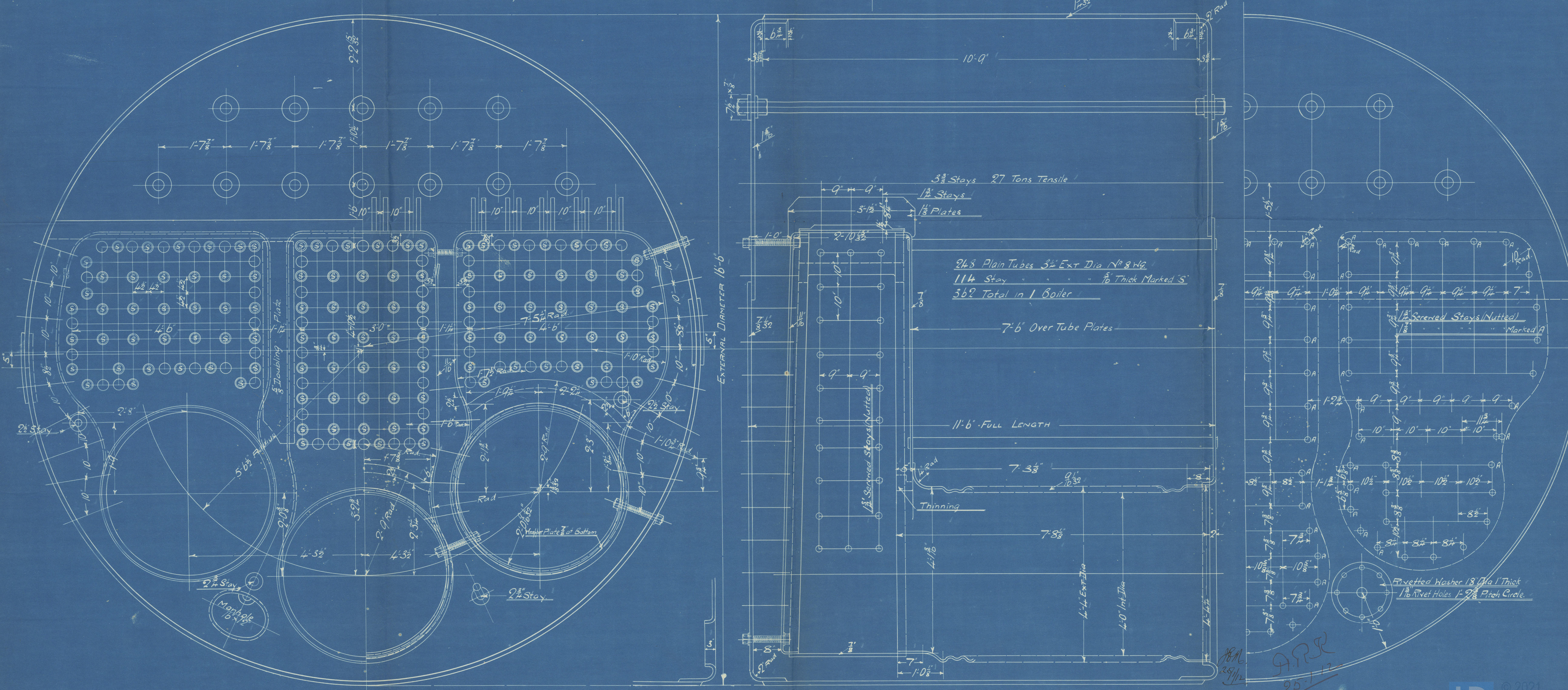
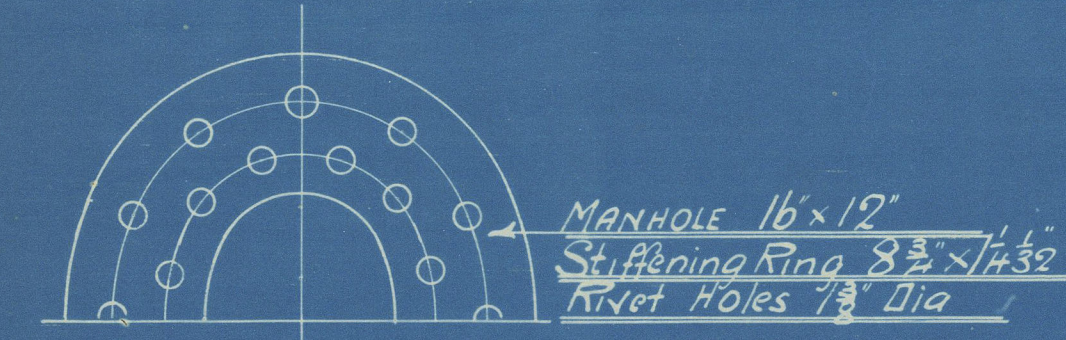
Tensile Strength of Girders 28 to 32 Tons per sq in

Rivetting

Front & Back Seams Double Rivetted 1/16 Rivet Holes 3/8 Pitch 5/8 Lap

Com Chr Long " Single " 1/8 " 2 1/2 " 2 1/2 "

" " & Furnace " Single " 1/8 " 2 1/2 " 2 1/2 "



No 736

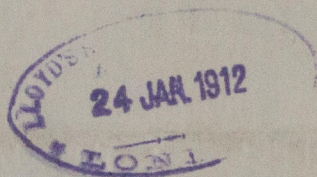
J. Dickinson & Co.

No. 736 Barbers (2)
180 lb.

for

J. L. Thompson & Co.

No. 491



S. Frickley

SUNDERLAND. Rpt 25397



© 2021

Lloyd's Register
Foundation