

# S.S. N<sup>o</sup> 919 & 931 MIDSHIP SECTION

TRANSVERSES N<sup>os</sup> 38.40.43.45.47.49.52.54.56.

SCALE  $\frac{1}{2}$  = ONE FOOT

DIMENSIONS 420'-0" 54'-2 1/2" 32'-7 1/2"

(SHERWOOD SYSTEM.)  
PATENT

OILTIGHT BULKHEADS.

N<sup>os</sup> 39.41.42.44.46.48.50.51.53.55.57 & 58.

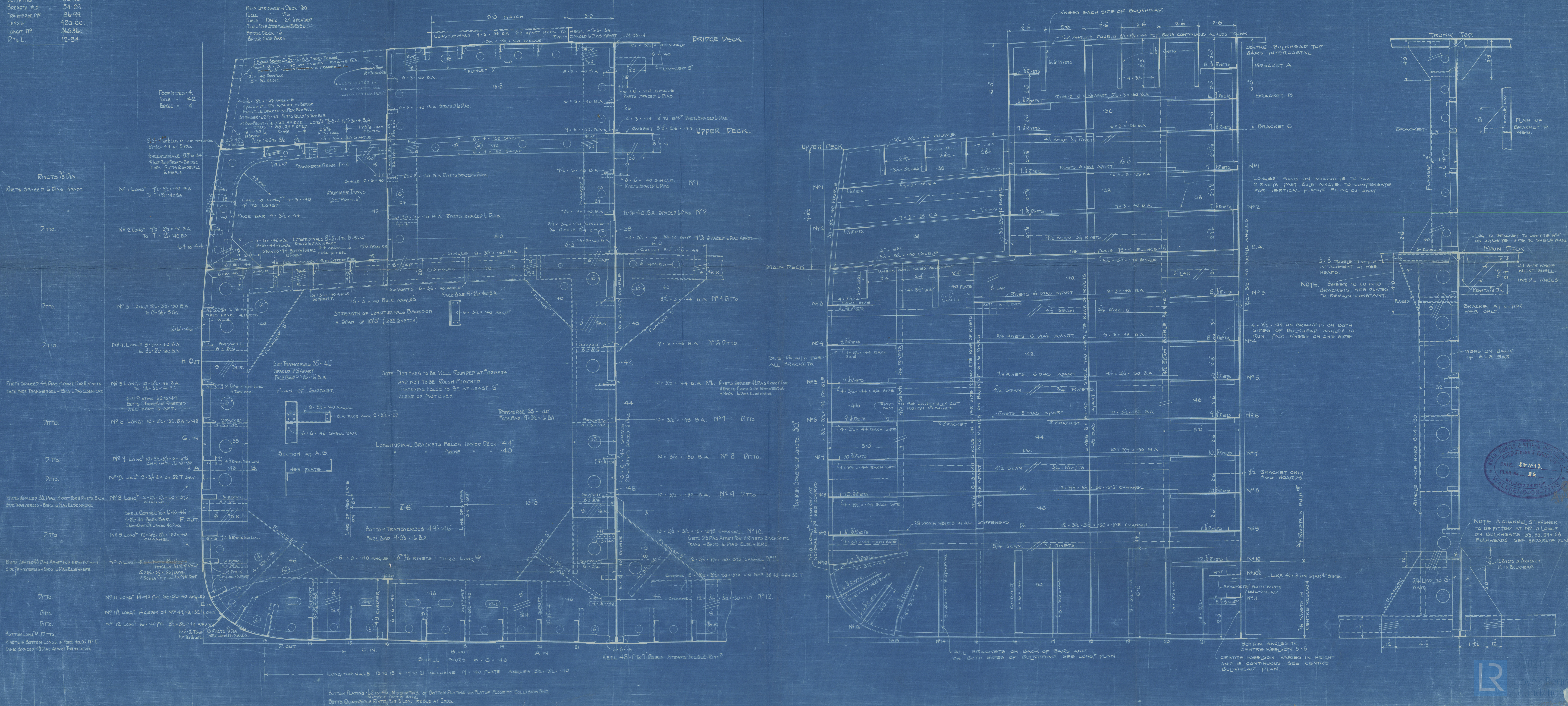
NOTE FOR DIFFERENCE ON N<sup>o</sup> 58  
BULKHEAD SEE SEPARATE  
PLAN.

PLAN AT N<sup>o</sup> 44 BULKHEAD. NO SHEER.  
VIEW LOOKING FORWARD.

EQUIPMENT N<sup>o</sup> 88406  
2 BOW ANCHORS STOCKLESS 5800 LBS  
1 STEAM EX. STOCK 14"  
1 KEDGE 6"  
210 FMS. 2 1/2" SHIP CABLE  
40 5" STEAM WIRE HAWSE  
120 5" WIRE TONLINE  
2 40 8" MANILLA  
2 40 1" MANILLA.

## LLOYD'S NUMERALS

DEPTH MLD 32'-70"  
BREADTH MLD 34'-29"  
TRANSVERSE N<sup>o</sup> 36-99  
LENGTH 420'-00"  
LONGIT. N<sup>o</sup> 36536  
D TO L 12-84.



SWAN Hunter and  
Wigham Richardson

SS 931

Midship Section

S.S. "ELSIMORE"

NEWCASTLE-ON-TYNE

REPORT No. 65293



© 2021

Lloyd's Register  
Foundation

W906-0030