

351-9 B.P. x 50-11 $\frac{1}{2}$ EXT. x 28-5" MOULDED

AFTER MAIN BRIDGE DK. HATCH 25'-6" x 18'-0" x 2'-6"

4 WEBS ABOUT $3\frac{1}{2}$ " APART
 20" x 34" TO 16" x 34",
 4 x 3" x 40° ANGLES ON
 UPPER & LOWER EDGES, BRACKETS TO BOTTOM
 OF CHANNELS.
 6 BRIDGE DE.
 6 1/2 BEAMS.
 3 1/2" x 3 1/2" x 46 INGS, 2 RIVETS.
 6 1/2 3 1/2" x 46
 6 FLANGE.

AFTER MAIN UPPER DK. HATCH 25'-6" x 18'-0" x 1'-0"

SAME SCANTLING AS HATCH ABOVE.
 14" UPPER DECK
 7 BEAMS.

AFTER HATCH 25-6 x 18-0
SAME SCANTLING AS FORE HATCH.

GIRDERS UNDER BRIDGE DECK
10' 0" EACH SIDE OF CENTRE,
8' FRAME TO BRIDGE FRONT.

MAIN HATCH $27-7\frac{1}{2} \times 20-0$

SIDE CORNING 52.
END " 40.
SIDE " ANGLES
6 x 6 x 52.
END CORNING ANGLE
6 x 6 x 40.

4 KEYS ABOUT 5'-6 1/2" APART
 24" x 40" TO 21" x 40,
 5" x 3" x 1/4" ANGLE ON
 UPPER & LOWER EDGES.
 2 BRACKETS TO BOTTOM OF
 COILING
 2-6 BOLT STAYS EACH SIDE
 OF MAIN HATCH ONLY.
 8 1/2" BEAMS
 3 1/2" x 3 1/2" x 48 LUGS, 3 RIVETS.
 6 x 3" x 1/2" GIRDER BAR.
 8 BURNES

FORE HATCH 25'-6" x 18'-0"

SIDE CORNING S. 50.
END " " 40
SIDE " ANGLES
6 x 6 x 50.
END CORNING ANGLE
6 x 6 x 40.

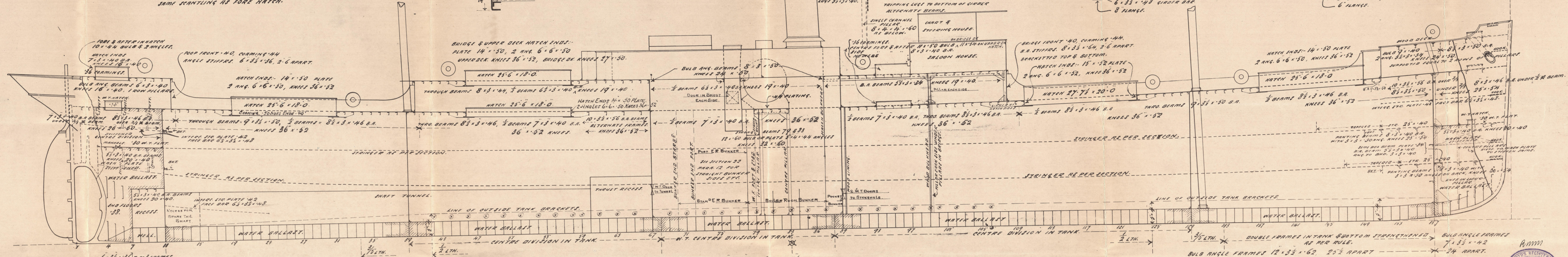
A hand-drawn technical sketch of a structural connection between two horizontal beams. The top beam is labeled "8\" I BEAMS". It is supported by two vertical members labeled "6\" GIRDER BAR.". Below the top beam, there are two more horizontal members labeled "5\" x 3\" x 16\" WELLS, 3 RIVETS.". The bottom member is labeled "6\" FLANGE.". On the left side, a vertical dimension line indicates a height of "14\". To the right of the drawing, handwritten notes specify: "4 WEBS, ABOUT 5\" APART", "20\" x 34\" TO 16\" x 34\", "4\" x 3\" x 40\" ANGLES ON UPPER & LOWER EDGES.", and "WATCH WEBS BRACKETTED.".

" 50.
" 40.
" LES
ANGLES

4 WEBS, ABOUT 5" APART
20" x 34" TO 16" x 34,"
4" x 3" x 40" ANGLES ON
UPPER & LOWER EDGES.
WATCH WEBS BRACKETTED.

8" BEAMS.
5" x 3" x 16" WELLS, 3 RIVETS.
6" GIRDER BAR.
6" FLANGE.

14"



ANGLE FRAMES $6 \times 3\frac{1}{2} \times 36$ 7 TO 31 FRAMES.
REVERSE " $3 \times 3\frac{1}{2} \times 36$ 6 GIRDER.
REVERSE TO UPPER DECK. --- *
BULB ANG. FRAMES $7 \times 3\frac{1}{2} \times 42$
4 TO 10 FRAMES.
FRAMES 24" APART. --- >

BULKHEAD No 11.

PLATING .36 to .34, FRAME BAR 5-5-50
DECK BAR 4 x 4 = .36. STIFFS LOWER PART 7-1 1/2 x 50 B.R.
24 APART. UPPER PART 8-1/2 x 40 B.R. 24 APART.
HORIZONTAL STIFFS ON LOWER PART 7-1 1/2 x 50 B.R.
" " " UPPER " 8-1/2 x 44 B.R.
" " " BRACKETED TO SHEL.

BULKHEAD NO 39.
 PLATING ALL 3/4", FRAME & T.T. BAR 5" x 5" x .50
 DECK BAR 3 1/2" x 3 1/2" x .36. B.R. STIFFERS. 11 x 3 1/2" x .58
 2-6 APART.

BULB ANGLE FRAMES $12 \times 3\frac{1}{2} \times .62$, $25\frac{1}{2}$ APART
TO UPPER & BRIDGE DECKS ALTERNATELY, INTERMEDIATE STIFF^{RS} IN BRIDGE $3\frac{1}{2} \times 3\frac{1}{2} \times .40$
CONTINUOUS FRAMES TO BRIDGE DECK MARKED THUS (X).

BULKHEADS NO^s 67 & 89. 8" T. BAR
PLATING ALL '32. FRAME 5" x 5" x 48
DECK BAR 3 1/2" x 3 1/2" x 34. B.R. STIFFENERS 10 1/2" x 3 1/2" x 56
2-6 APART.

BULKHEAD NO 129.
PLATING ALL '34. FRAME & T.T. BAR 5" x 5" x '62
DECK BAR 4" x 4" x '86. B.A. STIFFENERS 12" x 3 1/2" x '64 2'6" APART.

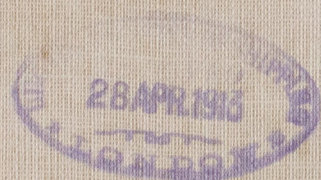
BULKHEAD NO 157.
PLATING .38 TO .30. FRAME BAR 5" x 5" x .34
DECK BAR 4" x 4" x .38. VERTICAL STIFFER 9" x 3 1/2" x .20 B.A. 2" O APART,
UP TO W.T. FLAT. ABOVE W.T. FLAT 5" x 5" x .36 B.A. 2" O APART, ALSO
VERTICAL WEBS FORMING CHAIN R. SIDES & DIVISION.
HORIZONTAL STIFFER 1" AS SHOWN ABOVE 9" x 3 1/2" x .50 BELOW W.T. FLAT
& 8" x 3 1/2" x .42 ABOVE W.T. FLAT, BRACKETED TO SHIPS SIDE.

S/S. Harewood

Profile
"as Built"

J. L. Thompson
Plans 496

Std Rpt. 25665



RETAIL

W900-0058



© 2020

Lloyd's Register
Foundation