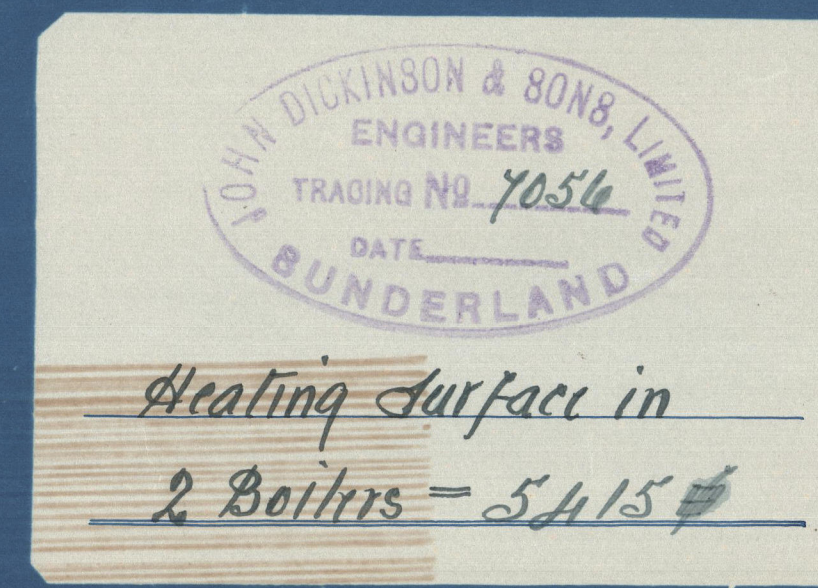


STEEL BOILERS

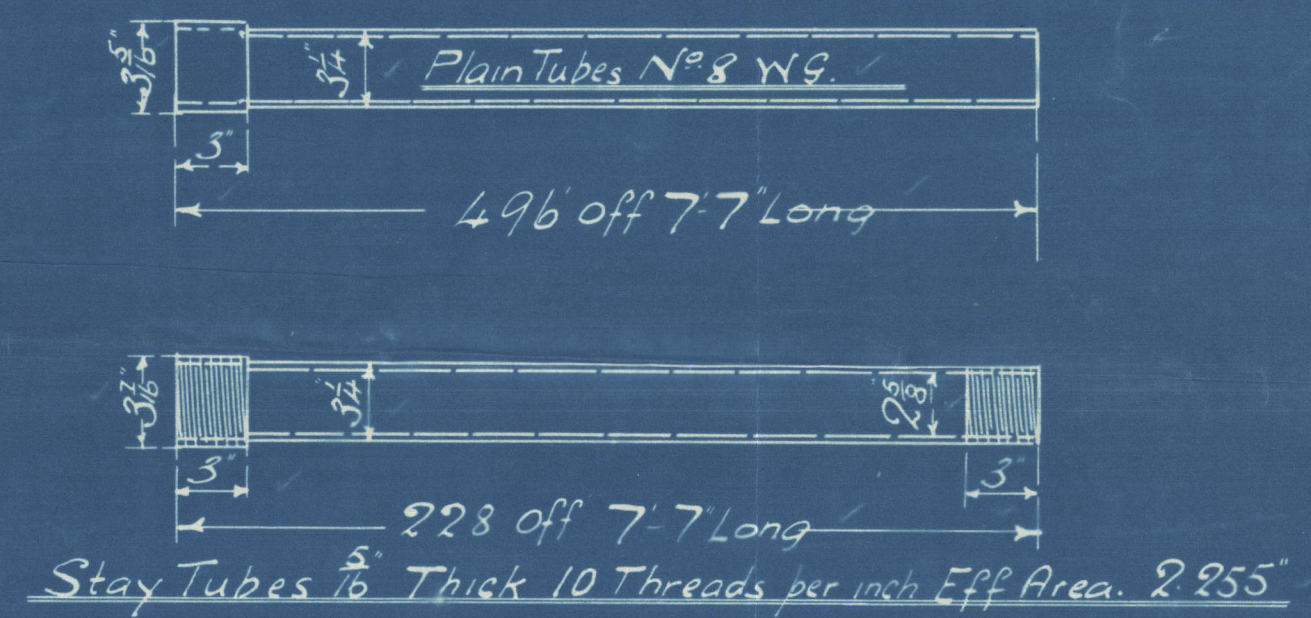
To Lloyd's Requirements for working Pressure of 180 lbs per sq in
All Plates Rivets, Girders & Stays of Steel
Scale 1" = 1 foot

26/4/12

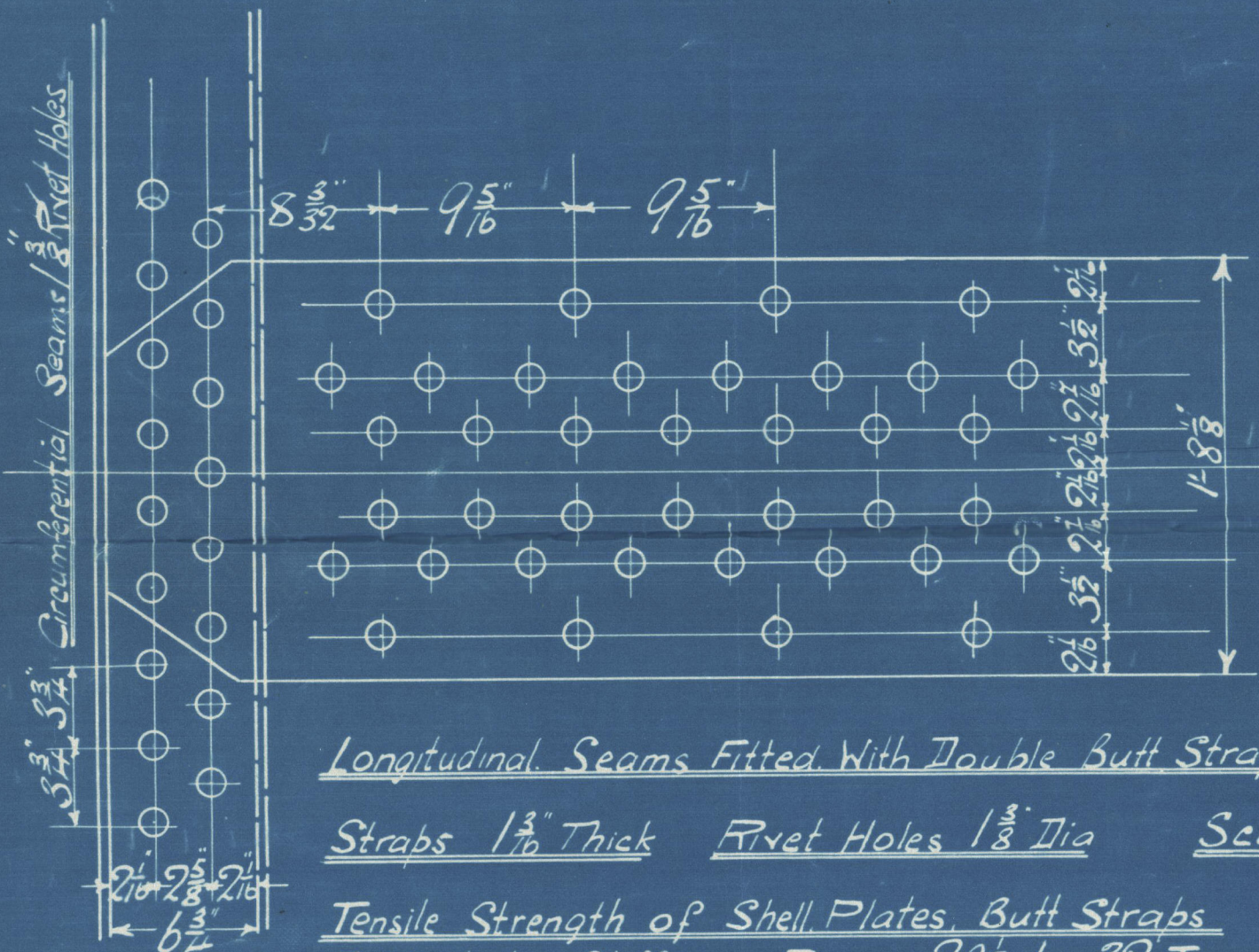


Heating Surface in
2 Boilers = 5415 sq ft

Stays			
Dia	Threading	Eff Dia	Eff Area
1 1/2"	9	1.607	2.031
1 3/8"	9	1.732	2.35
2"	6	2.286	4.13
3"	6	3.16	7.85
2 1/2"	6	2.53	5.05

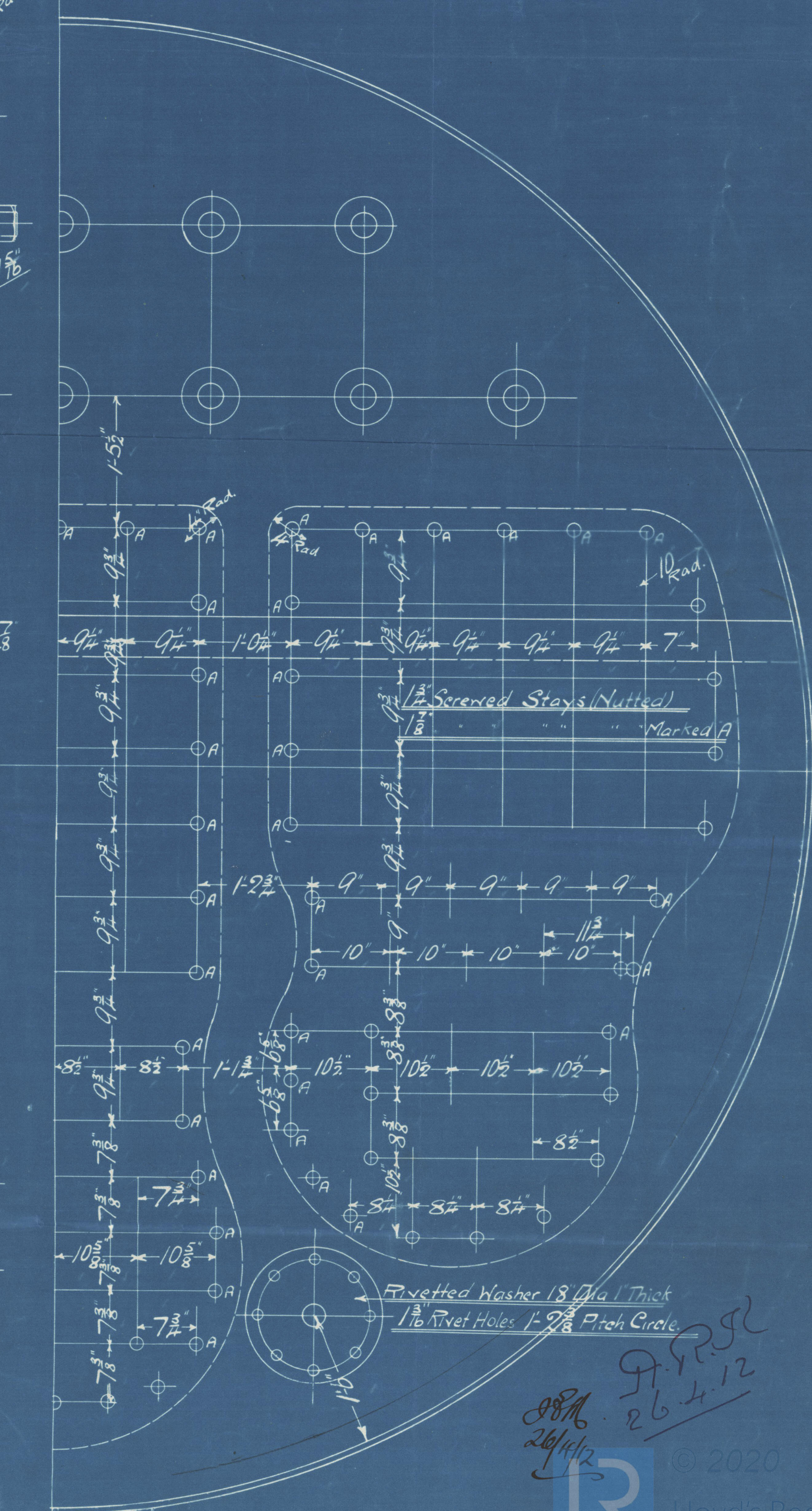
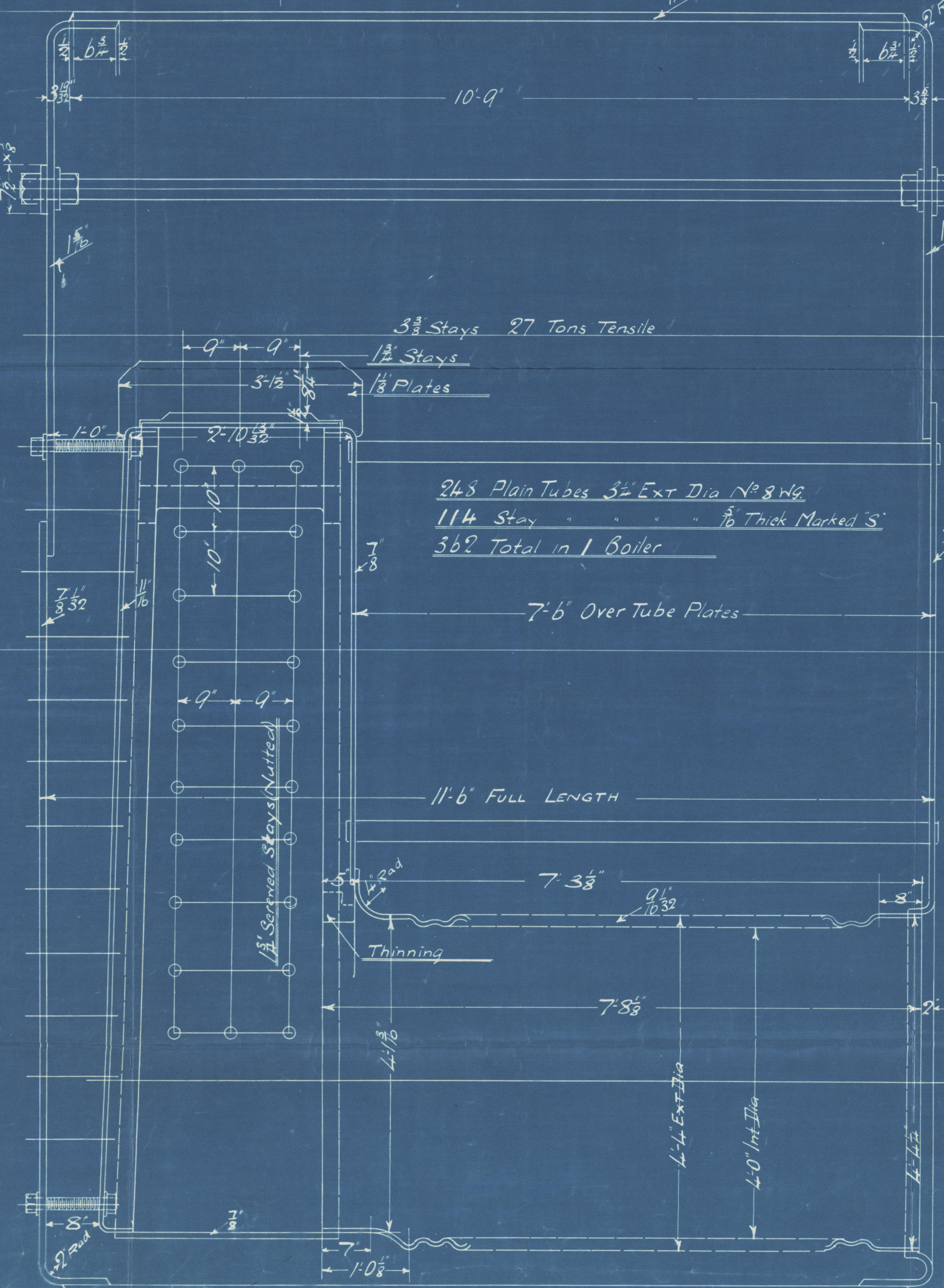
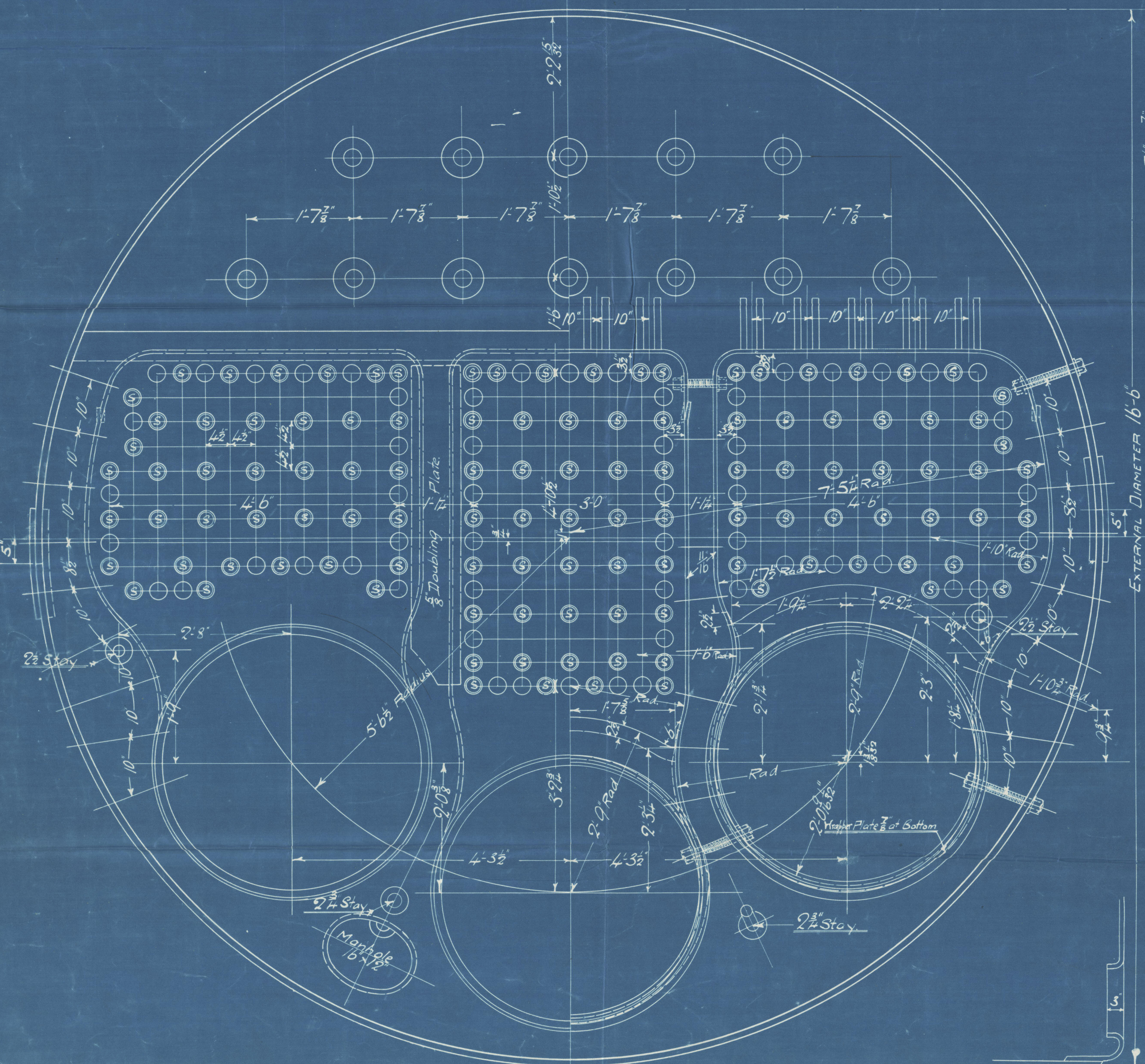
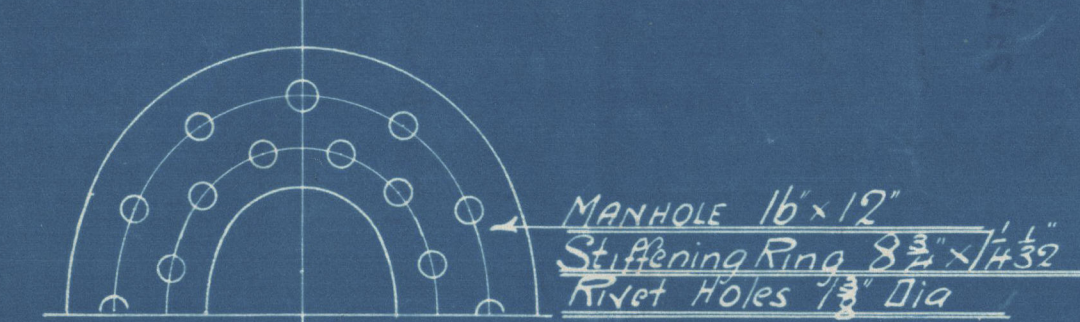


ENGINE		DATE		FURNACES
1352	Intended for Messrs J.L. Thompson & Sons S.S. No 1491	12-1-1912	Leighton's	Section
1422	" " " " " 493	19.4.12	"	"
7192	" " " " " 494	19.4.12	"	"
7532	" " " " " 496	19.4.12	"	"
2 OFF				



Longitudinal Seams Fitted With Double Butt Straps
Straps 1/16 Thick Rivet Holes 1 3/8 Dia Scale 1/2 = 1 foot
Tensile Strength of Shell Plates Butt Straps
& Manhole Stiffening Rings 28 to 32 Tons per sq in
Tensile Strength of Girders 28 to 32 Tons per sq in

Rivetting
Front & Back Seams Double Riveted 1/16 Rivet Holes 3 1/2 Pitch 5 1/8 gap
Com Chr Long " Single " 1/16 " 2 1/2 " 2 1/2
" & Furnace " Single " 1/16 " 2 1/2 " 2 1/2

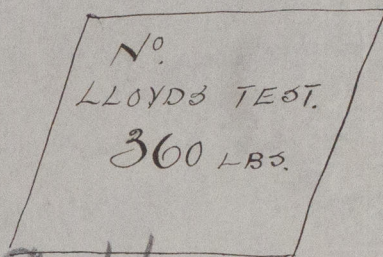


J.P.P.
26.4.12

J. DICKINSON & SONS, L^D

C^t. No. 753.

MAIN. BLRS. 2 OFF.



S.S. Harewood



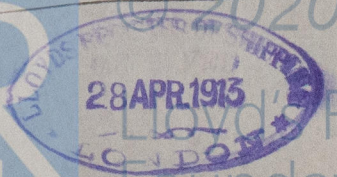
J. L. THOMPSON & S. 496 $\frac{3}{4}$.

(DUPLICATE No 749.)

Harewood

Sl. No. 25665

RETAIN



Lloyd's Register
Foundation

W900-0057