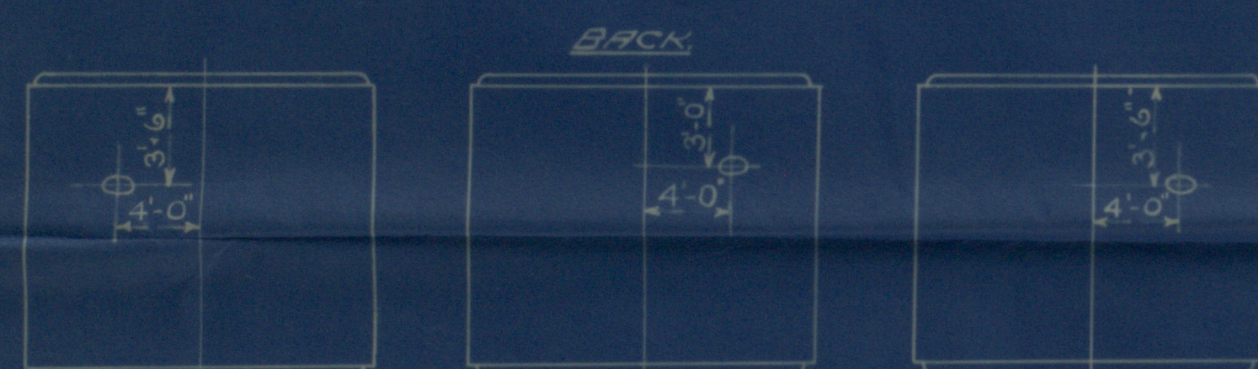


SURFACES		ONE BOILER 3 BOILERS	
TUBES	2370 #	7020 #	
FIREBOX TOP & SIDES	222	666	
BACK	70	270	
TUBEPLATE	59	177	
FURNACES	199	597	
TOTAL HEATING SURFACE	2910 #	8730 #	
GRATE AREA (5'6" BARS)	71.5	212.5	
TUBE AREA	144.3	432.9	
WATER AREA	174	522	
STEAM SPACE	531	1593	
GRATE AREA : HEATING SURFACE	1 : 2.07		
TUBE	1 : 3.27		
WATER	1 : 2.93		
STEAM SPACE	1 : 7.43		
% BOILER ABOVE FIREBOX	29.8		
HEIGHT OF WATER	32 TONS	96 TONS	

RIVETING		BACK END	FRONT END
RIVET HOLE DIA	1 1/8"	1 1/8"	1 1/8"
PITCH	10 3/8"	9-16"	3-4/16"
% PLATE	95.1	63.9	60
% RIVET	97.8	77.7	95
% COMBINED	87.9		

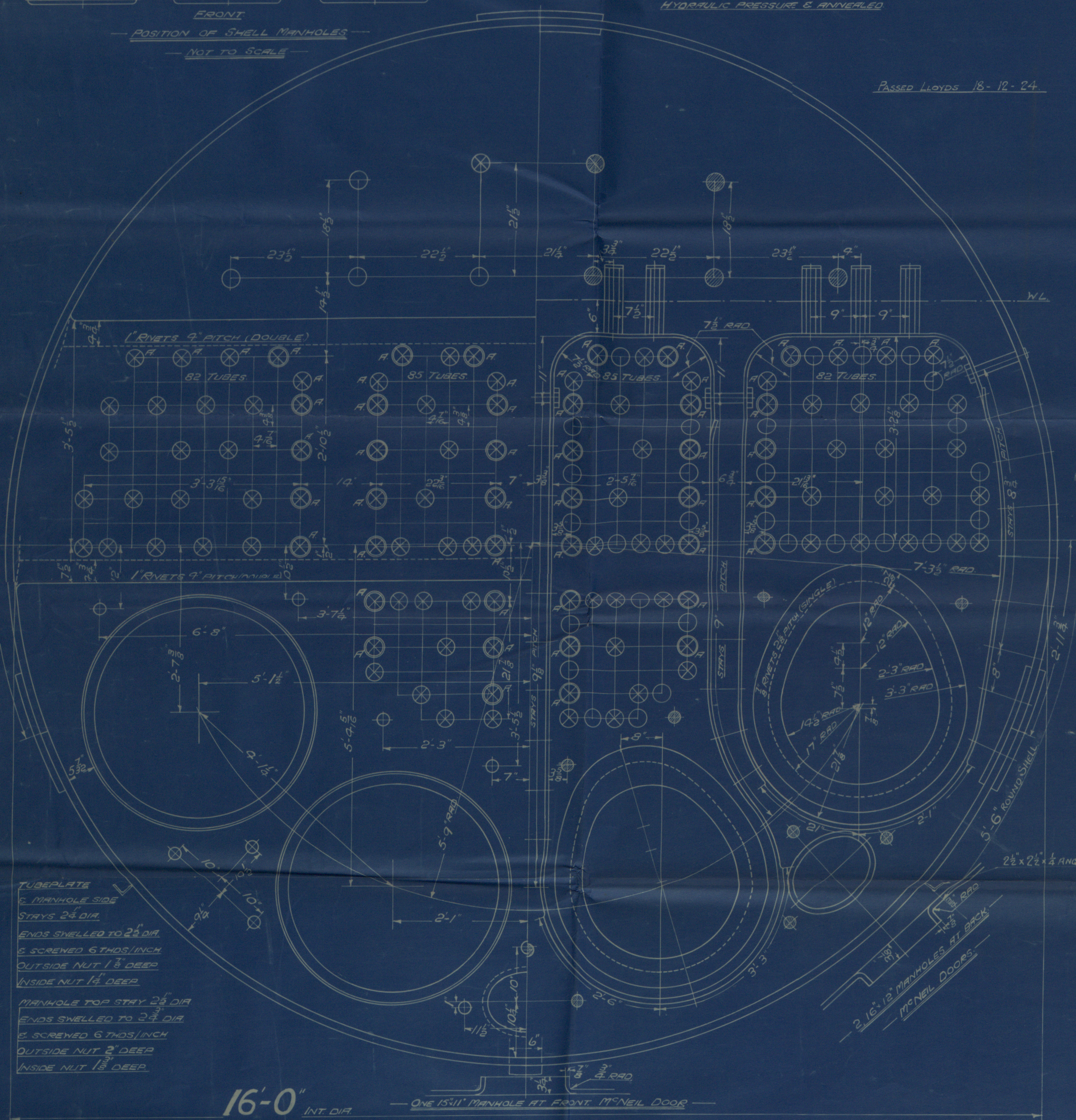
LIMITS OF TENSILE STRENGTH & MATERIAL	
SHELL BUTTSTRAP	30 TO 32 TONS
GIRDERS	28 TO 30 TONS
OTHER PLATES	26 TO 30 TONS
FURNACES	26 TO 30 TONS
MAIN STAYS	28 TO 32 TONS
SCREENED STAYS	26 TO 30 TONS
RIVET BARS	26 TO 30 TONS



POSITION OF SHELL MANHOLES
NOT TO SCALE

ALL RIVET HOLES DRILLED IN PLACE
MAIN STAYS SHELL AT ENDS BY
HYDRAULIC PRESSURE & ANNEALED

Passed Lloyds 18-12-24



16'-0" INT DIA

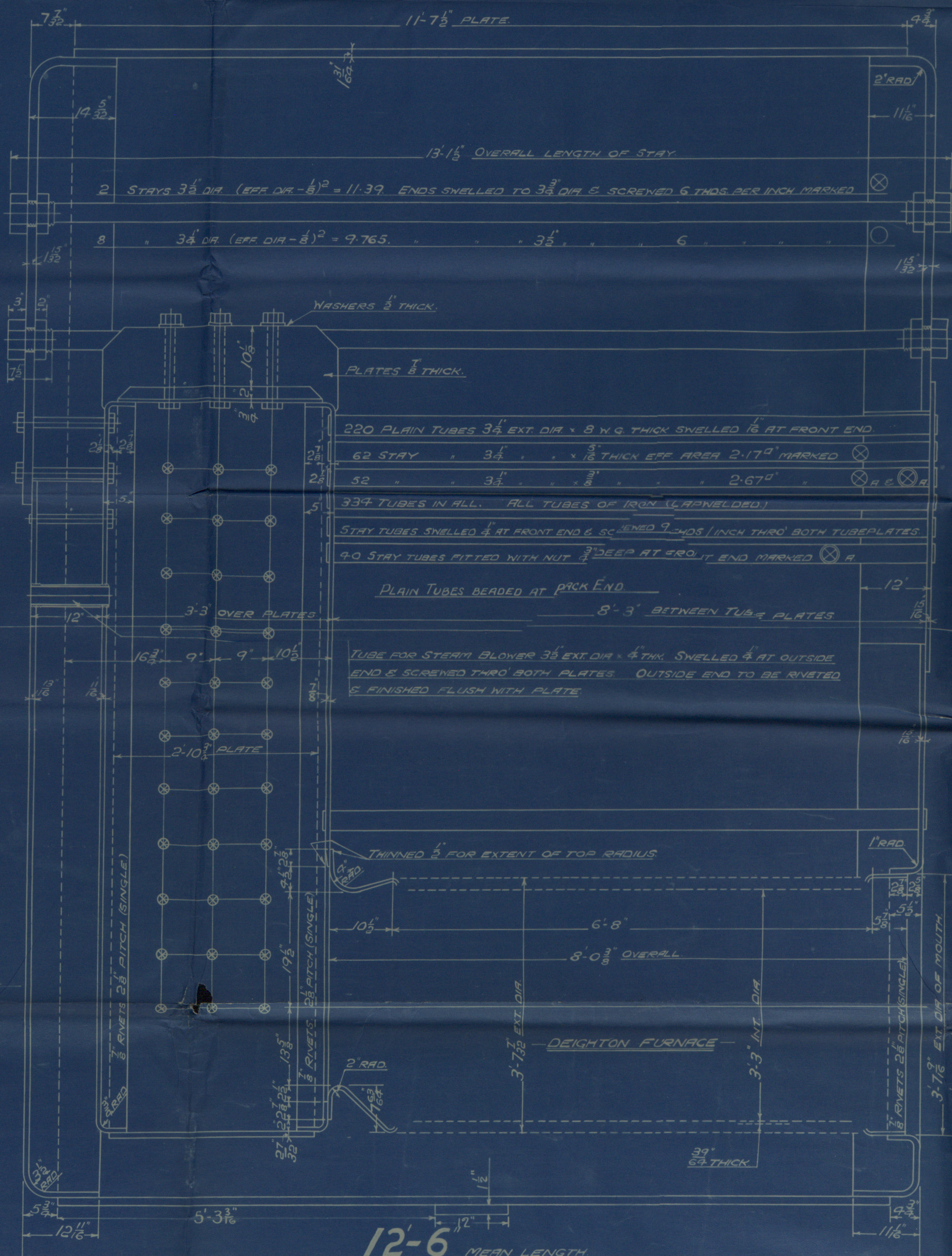
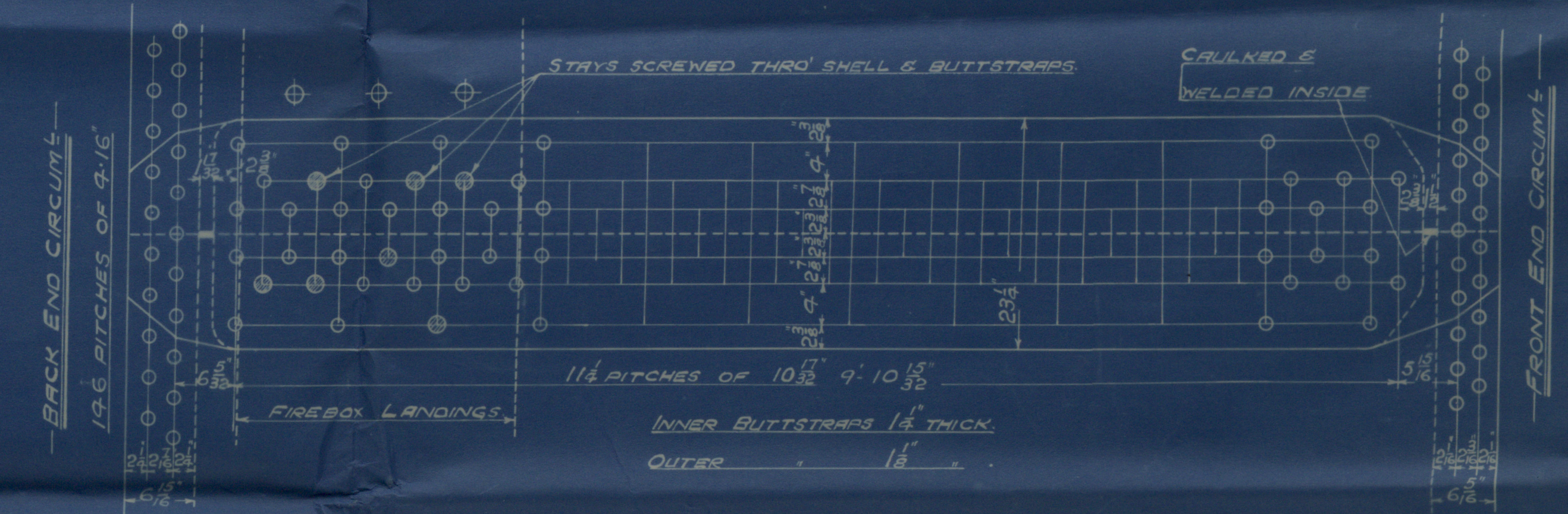
BEVELLED WASHERS
FITTED WASHERS
REQUIRED

END PLATE

12'-11" OVERALL LENGTH OF MAINHOLE STAYS

DETAIL OF MANHOLE & TUBEPLATE STAYS

FIREBOX WRAPPER PLATES: SPENDER RATES CANCELLED FOR
CONT. 848 & PLATES MARKED WITH THICKNESS OF 1/2"
TO FACILITATE DELIVERY (APPROVED BY LLOYDS 24-9-24)
CANCELLED 27-12-26



MAIN BOILER

3 OFF EACH CONT.

CONT. N° 822 848 379-887

WORKING PRESSURE 220 LBS. PER SQ. INCH

TEST 380

TO PASS LLOYDS SURVEY

SCALE - ONE INCH = ONE FOOT

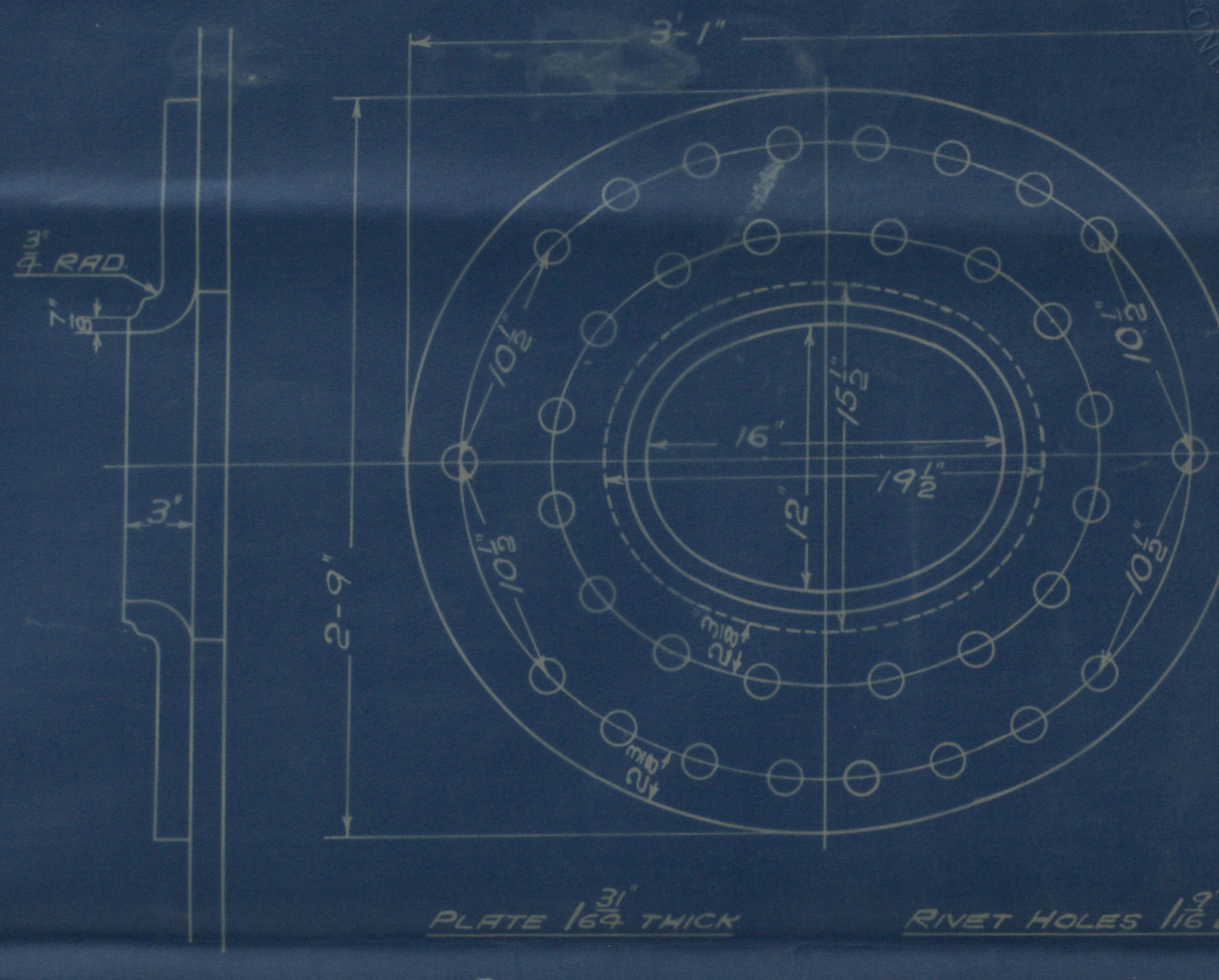
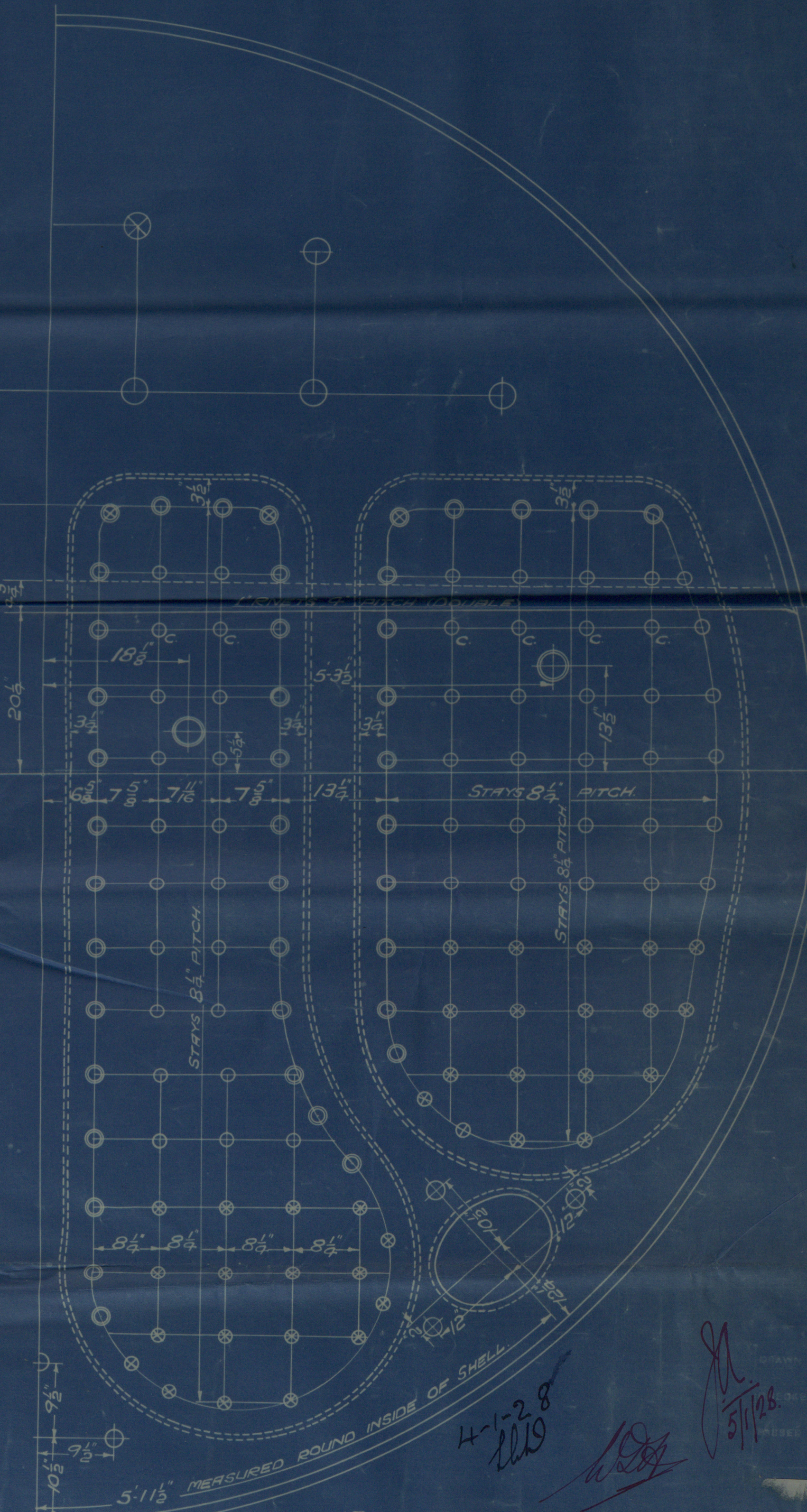


PLATE 1/8" THICK RIVET HOLES 1 1/8" DIA

SHELL MANHOLE COMPENSATING RING

MCNEIL DOOR



FIREBOX STAYS STEEL

POSITION	MARK	DIA	DIA-267	SCREENED
BACK	0	1 1/8"	1.842	9
TOP & SIDES & BACK BOTT.	0	1 1/8"	2.199	9
BACK TOP ROW & WIDE SPACE	0	1 1/8"	2.588	9
CORNER	0	2 1/8"	3.932	9

ALL FIREBOX STAYS SCREENED THRO' BOTH PLATES & NUT FITTED AT EACH END EXCEPT STAYS FROM WING FIREBOX TO SHELL & STAYS MARKED 'C' IN BACK BOTTOM END WHICH PROJECT & C ARE CALKED ALL 1 1/8" & 1 1/2" NUTS 6 DEEP EXCEPT ON GIRDER TOPS WHERE THE OUTSIDE NUTS ARE 1 1/2" DEEP ALL 1 1/8" NUTS 1 DEEP & 2 1/8" NUTS 1 1/2" DEEP

OT. 31874

TRAIL 20000

W9-0012



GLASGOW

D. ROWAN & CO LTD

MAIN

(3) BOILERS N^o 887

WP-220 LBS

DUPLICATE OF N^o 879

CHAS. CONNELL & CO LTD

S/S N^o 413

N^o 18006

LLOYD'S TEST

380 LBS

WP-220 LBS

A.C. 15-8-28

S. J. Penruickhan

GLASGOW REPORT N^o 48434



W9-0012

© 2019

Lloyd's Register
Foundation