

Boiler Order No 2088

Messrs Furness Withy & Co. Ltd S.S. No 295

To be constructed to pass Lloyds & German Law & Hamburg Police Survey

1891 lbs

Jan. 29/06

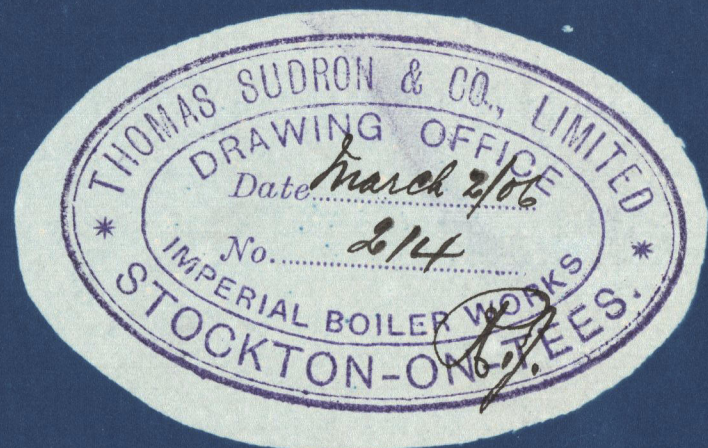
Plates by Messrs John Spencer & Son

Plates Steel

Rivets "

Tubes Iron

All Stays "



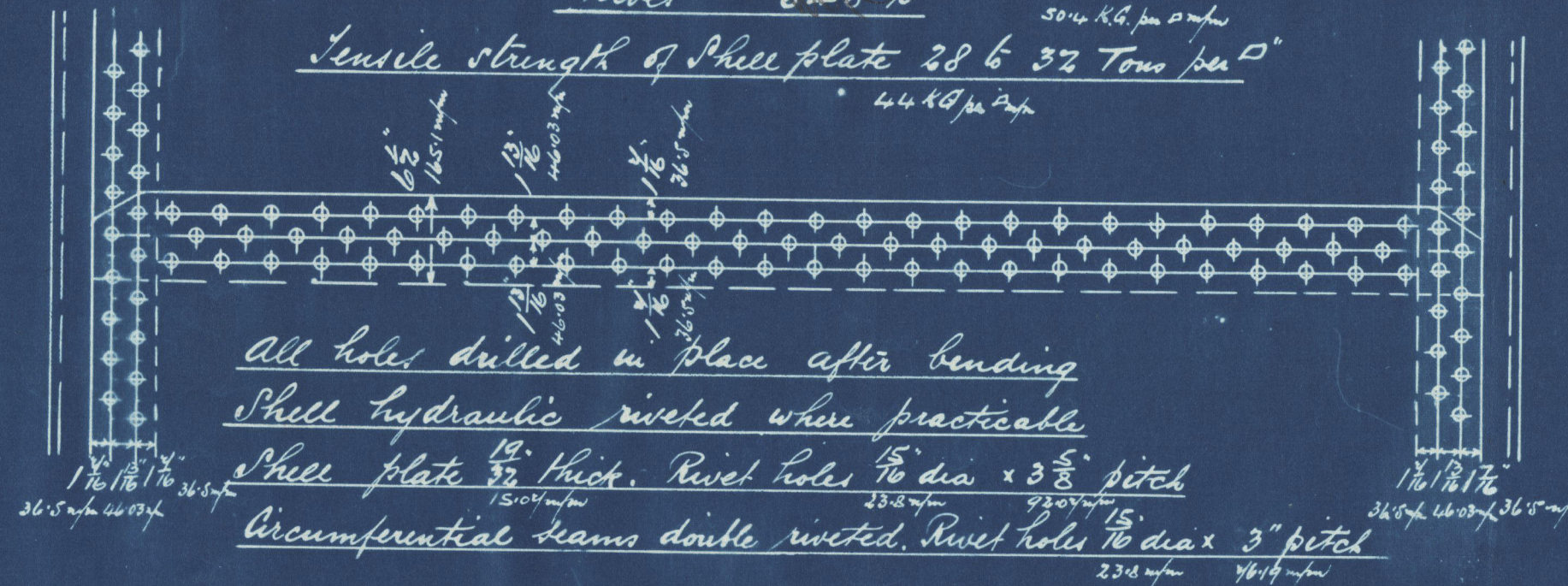
Plan of Shell Riveting

Strength of joint

Plate 74.1 %

Rivet 82.5 %

Tensile strength of Shell plate 28 to 32 Tons per sq. in.



Heating Surface Sq. ft.

9:30 Tubes 4 3/4 40.1

Furnaces 66 6.14

Combustion Chambers 68 6.31

Tube Plates 25 2.32

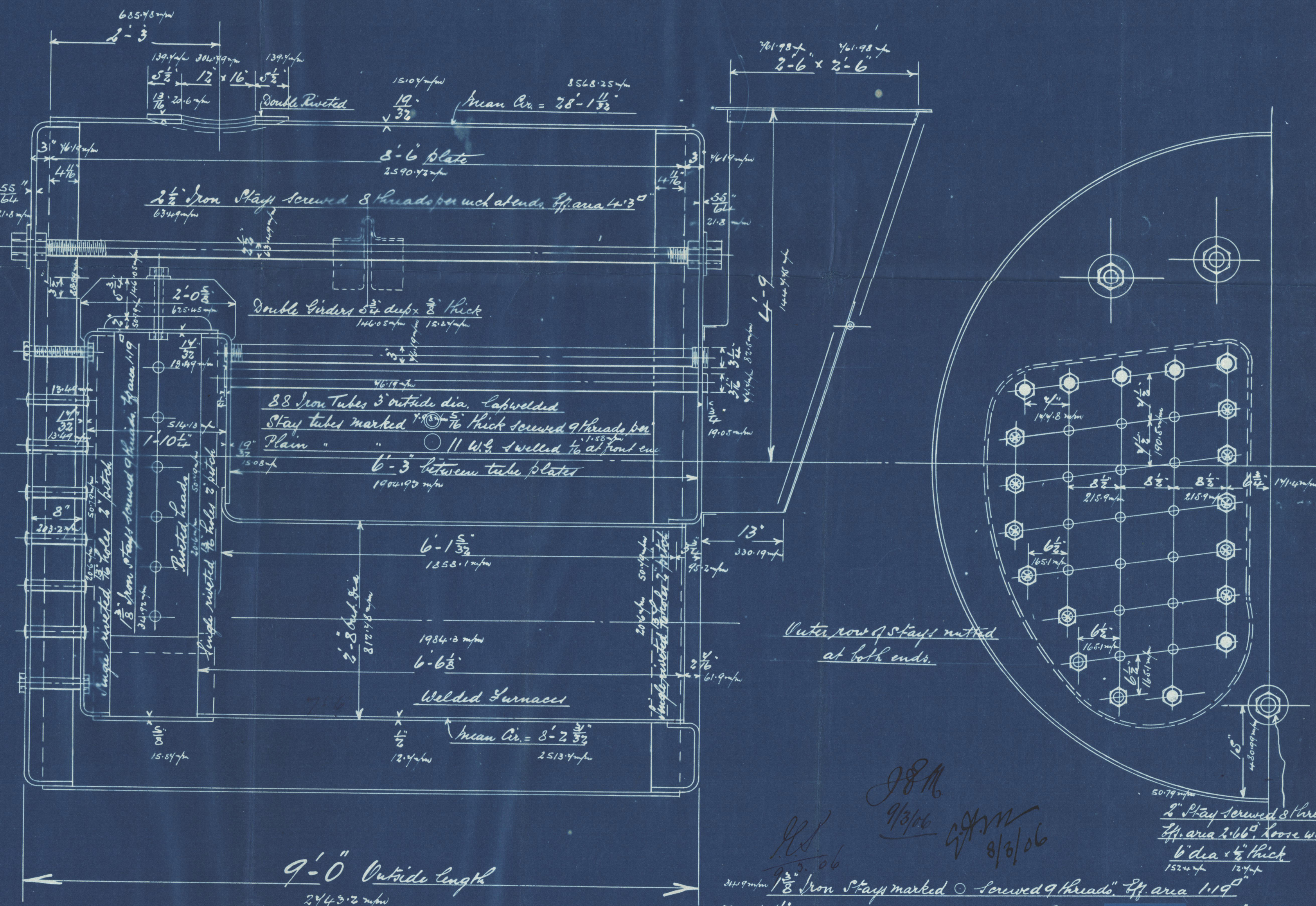
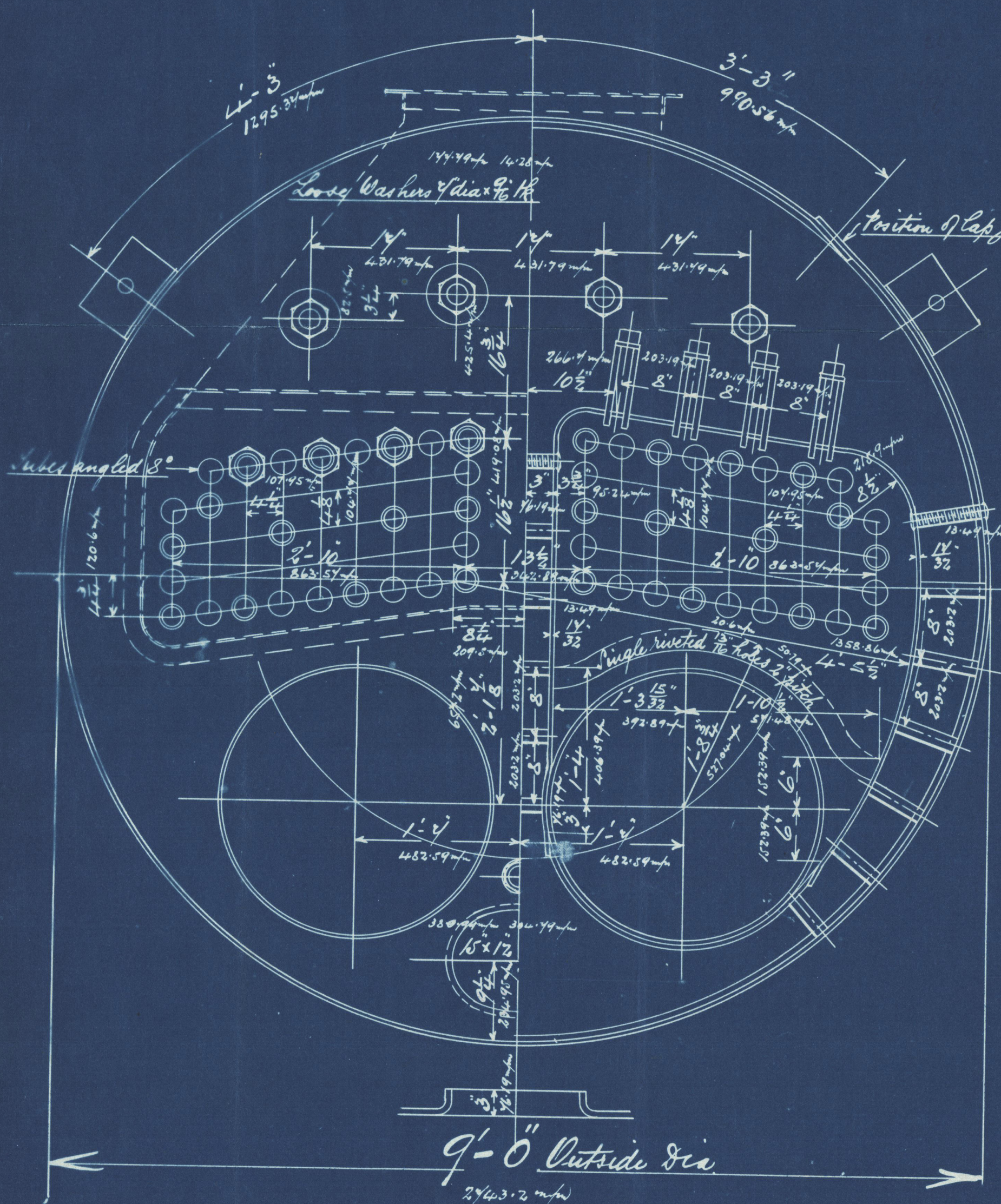
Total 591 Sq. ft. 54.87

Total Grate Surface 26 1/2 Sq. ft.

Firebars 5'-0" long

Working pressure 100 lbs per. sq. inch

Test do 200 " " "



Outer row of stays riveted at both ends.

JRM

9/3/06

8/3/06

2" Stay screwed 8 threads per inch
Eff. area 2.66 sq. in. loose washer
6 dia x 1/2" thick
152 lbs

1 1/8" Iron Stays marked 7/8" dia. 9 threads per inch
Eff. area 1.19 sq. in.
1 1/2" " " " " 9 " 1.45 sq. in.
1 3/4" " " " " 8 " 1.99 sq. in.

Stays to have riveted heads except where shown riveted

29/1/06

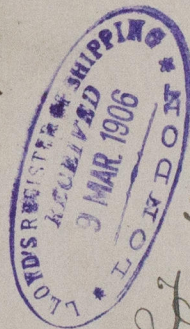
J Gordon & Co. Ltd

No 2088 fm

Furner Witherby & Co. Ltd

S/S No 295

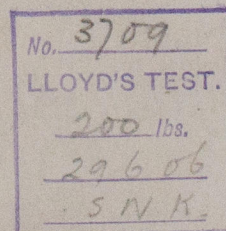
100th W R



Mdb report No 4688

S.S. "Harpender"

Hpl. Report No. 13065



RETAIN



W893-0102



© 2020

Lloyd's Register
Foundation