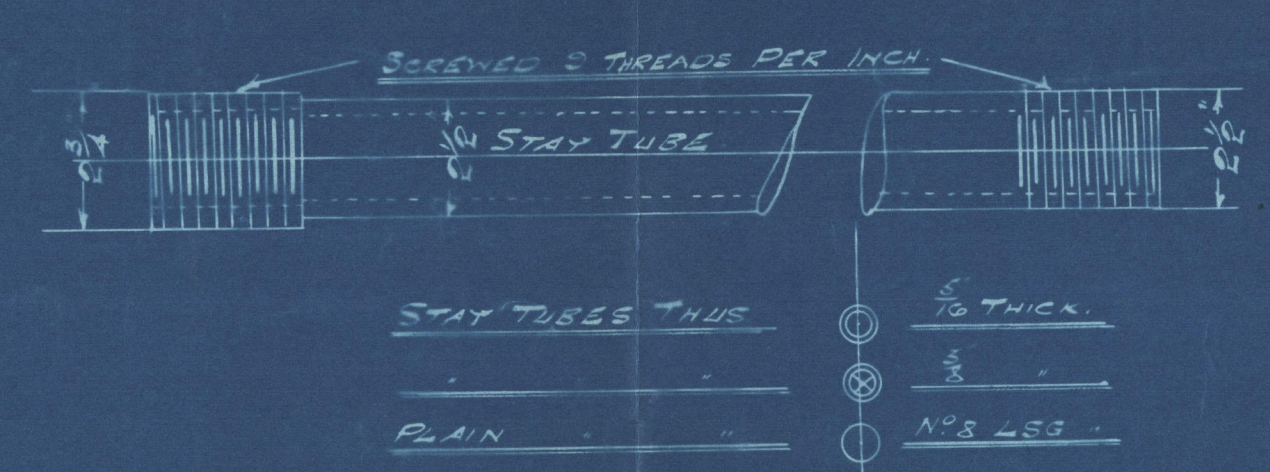


BOILERS N^o 884-5

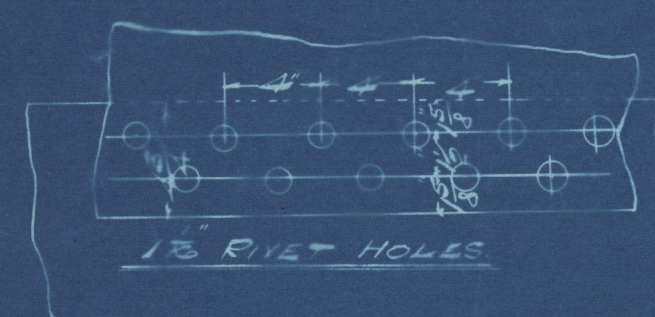
TWIN SCREW ENGINES

4 BOILERS TO EACH SHIP FITTED WITH FORCED DRAUGHT.
WORKING PRESSURE 180 LBS TEST PRESSURE 300 LBS PER SQ INCH TO LLOYD'S & REGISTERED IT-MAKING REQUIREMENTS
ALL PLATES, RIVETS & STAYS OF STEEL LAR WELDED IRON TUBES
ALL HOLES TO BE DRILLED IN POSITION
TENSILE STRENGTH OF SHELL PLATES & BUTTSTRAPS TO BE NOT LESS THAN 55 TONS PER SQUARE INCH
OTHER PLATES 50%
LONGITUDINAL STAYS 25 " 35
RIVETS & SCREW STAYS 20 " 30
THE ELONGATION OF SHELL PLATES, BUTTSTRAPS & LONGITUDINAL STAYS TO BE NOT LESS THAN 12 PER CENT IN A LENGTH OF 8 INCHES
OTHER PLATES 15
SCREW STAYS 25
RIVETS 30
3 TIMES THE DIAMETER OF TEST PIECE

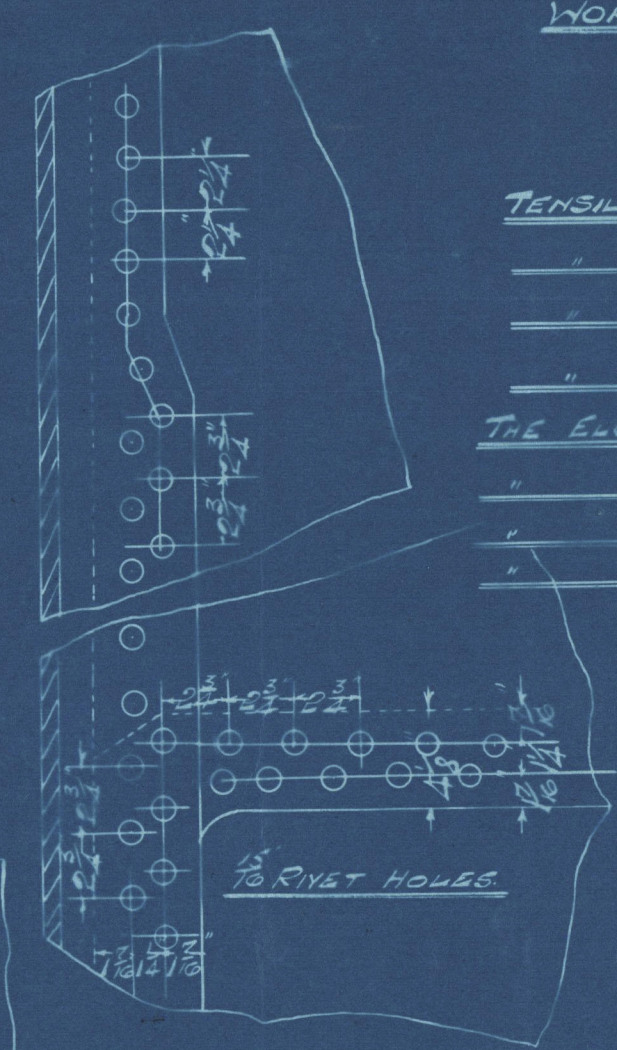
| | |
|--------------------------------|---------|
| HEATING SURFACE. | 59 FT. |
| SURFACE OF ONE TUBE 5223 sq. | |
| 420 TUBES | 5590.0 |
| 5 FIRE BOXES | 245.0 |
| 5 FURNACES | 182 |
| BACK TUBE PLATE | 58.0 |
| FRONT | 41.0 |
| TOTAL ONE BOILER | 3111.8 |
| GRAND TOTAL. | 13447.2 |
| TOTAL GRATE SURFACE (5-9 BARS) | 283.18 |
| TOTAL AREA TWO TUBES | |
| RATIO AREA TWO TUBES | |
| GRATE SURFACE | |
| TOTAL STEAM SPACE TO G' ABOVE | |
| TUBES - 2500 CUBIC FEET | |



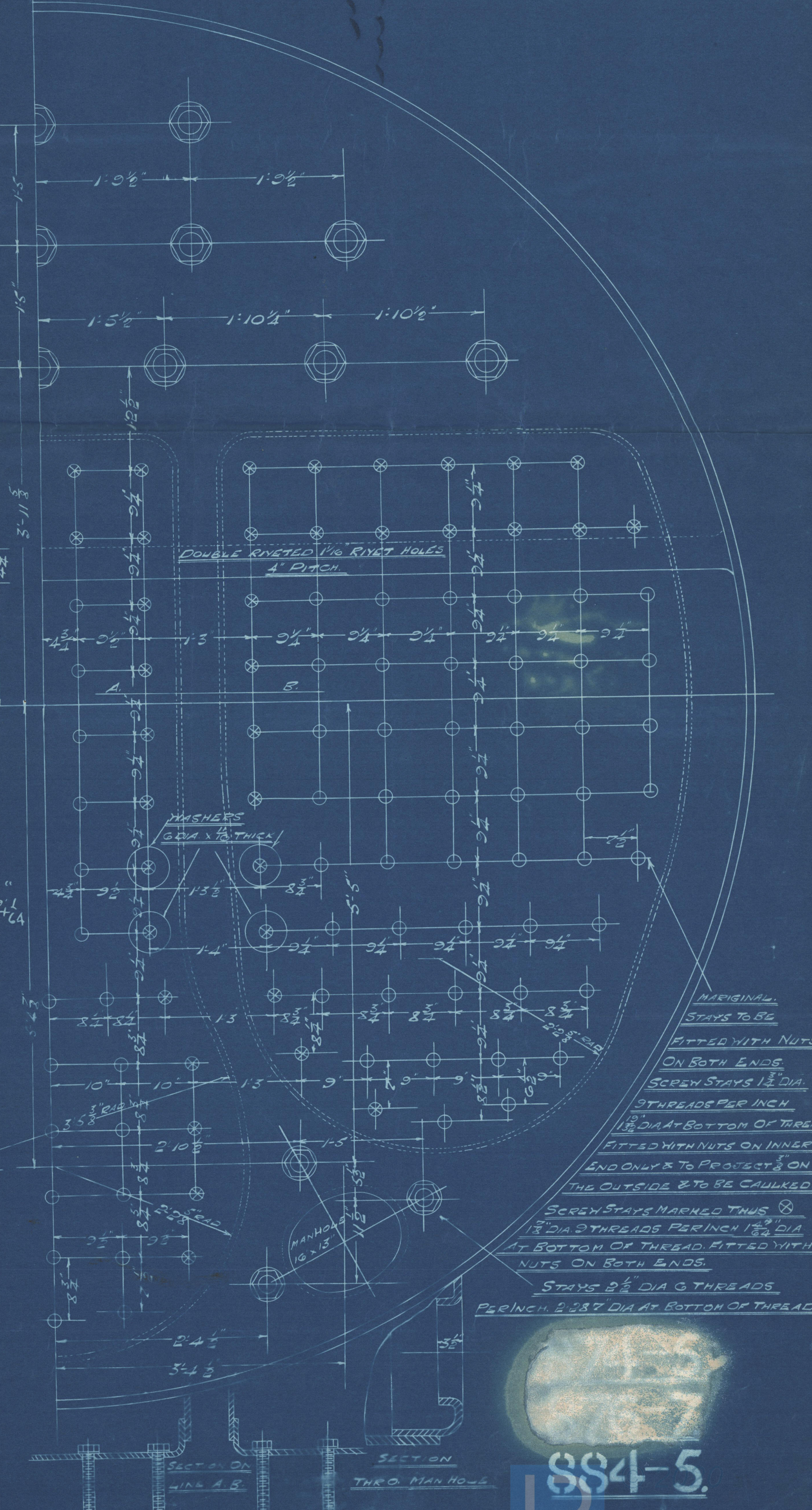
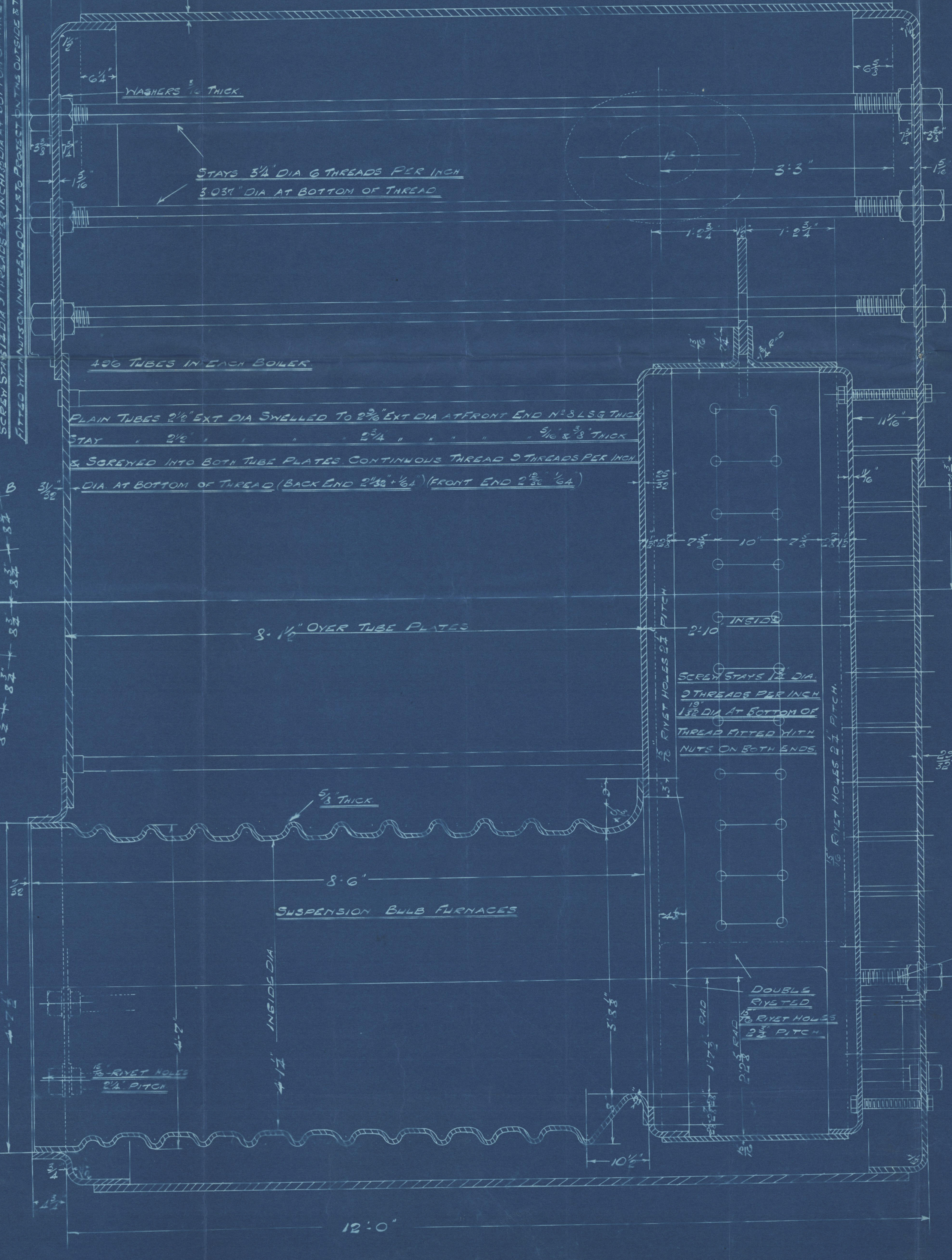
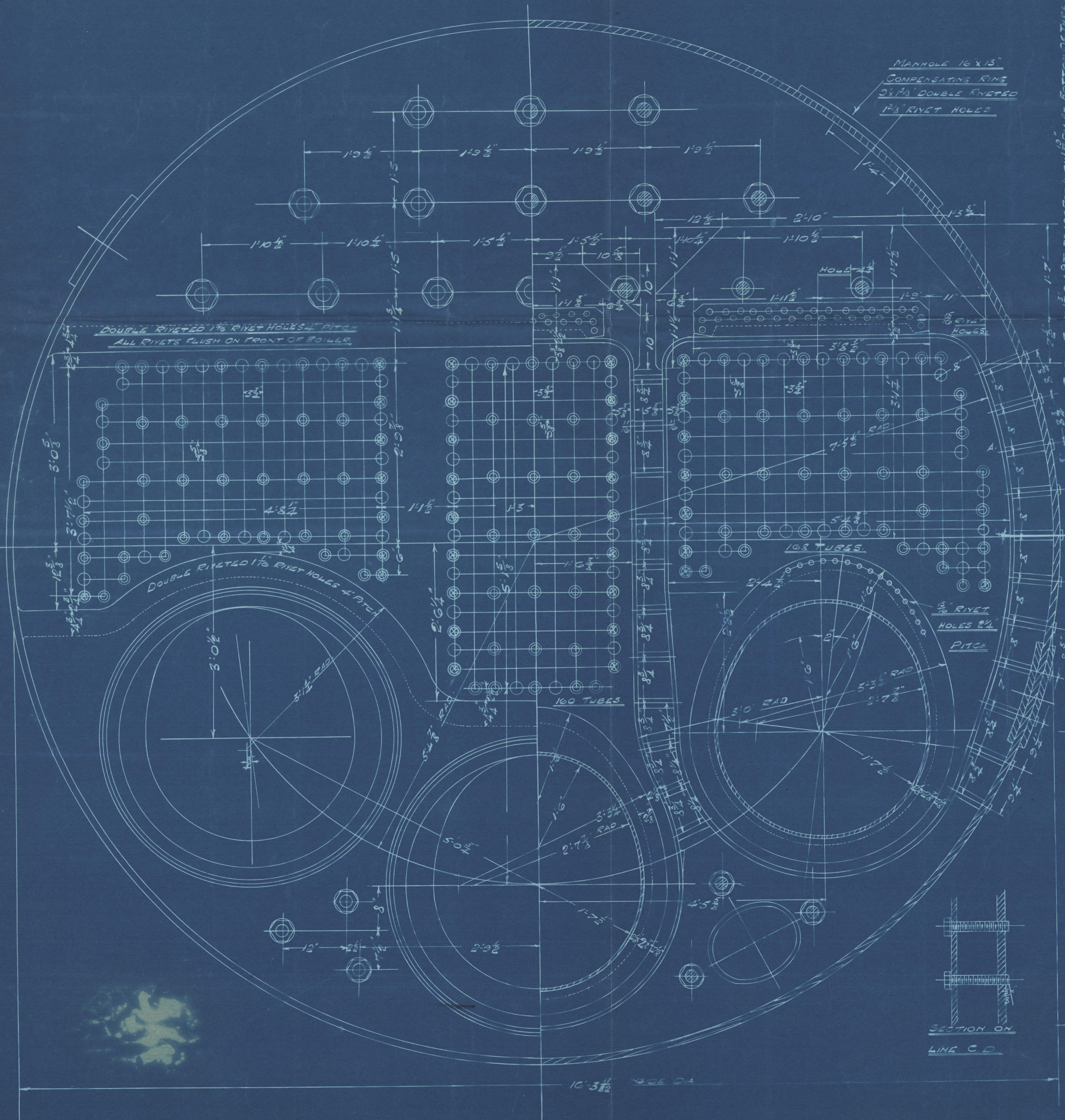
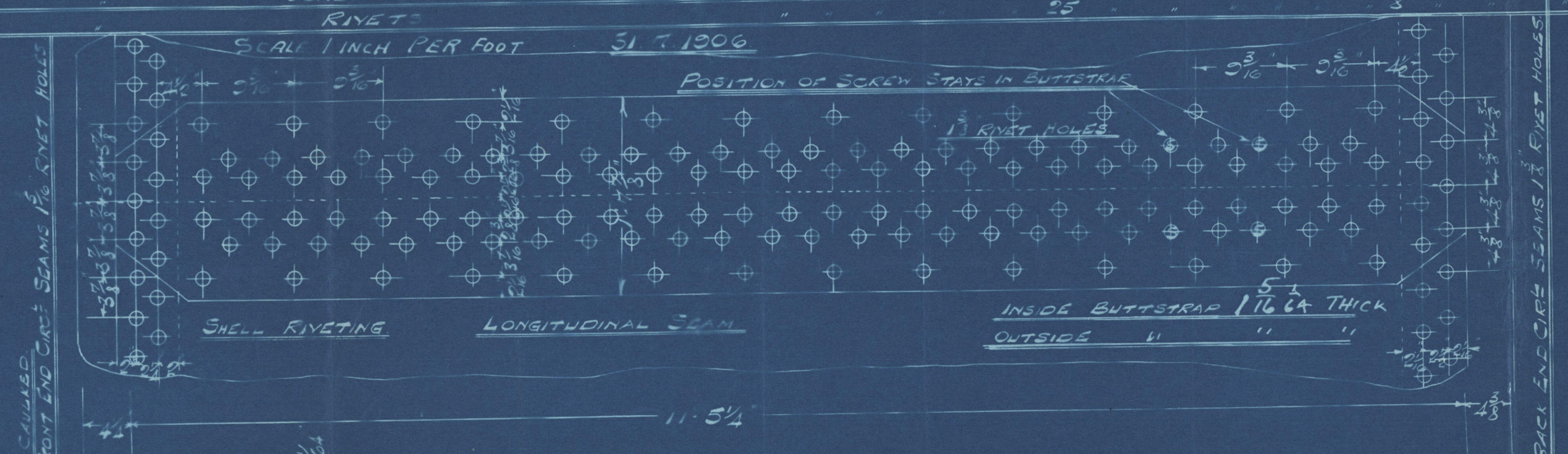
STAY TUBES TRUE
PLAIN
TO THICK
N^o 8-453



RIVETING OF FRONT &
BACK CROSS SEAMS



COMBUSTION CHAMBER
RIVETING
SCALE 1/2" PER FOOT



MARGINAL STAYS TO BE
FITTED WITH NUTS
ON BOTH ENDS
SCREEN STAYS 1 1/2" DIA.
30 THREADS PER INCH
1 1/2" DIA AT BOTTOM OF THREAD
FITTED WITH NUTS ON INNER
END ONLY & TO PROTECT ON
THE OUTSIDE & TO BE CHALKED.
SCREEN STAYS MARKED THUS
1 1/2" DIA 30 THREADS PER INCH 1 1/2" DIA
AT BOTTOM OF THREAD FITTED WITH
NUTS ON BOTH ENDS.
STAYS 3/4" DIA 30 THREADS
PER INCH 3/4" DIA AT BOTTOM OF THREAD.

884.5

M. BOILERS. G. CLARK^D

4 OFF 180 LBS.

FOR.

SIR J. LAING & SONS T.S.S. N° 623

APPROVED 2.8.06.

874.5 876.7 884.5

"Principe di Piemonte"

LLOYDS TEST

N° 2578

360 LBS.

19.2.07 E.J.S.

~~Sle "Manhattan"~~

~~Sle F. E. No. 23304.~~

Sle F. E. No. 23304.

RETAIN

W893-0086

E.J.S.



© 2020

Lloyd's Register
Foundation