

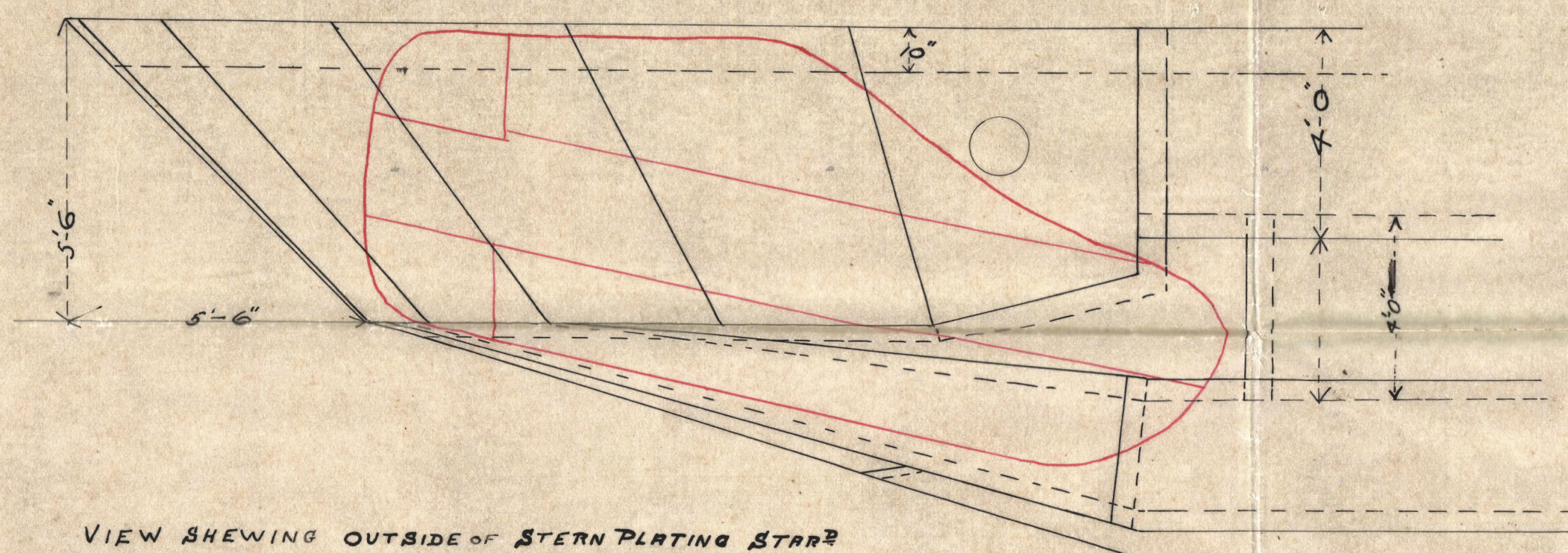
2/10/1918
 2/10/1918
 2/10/1918

S.S. "FOLIA"

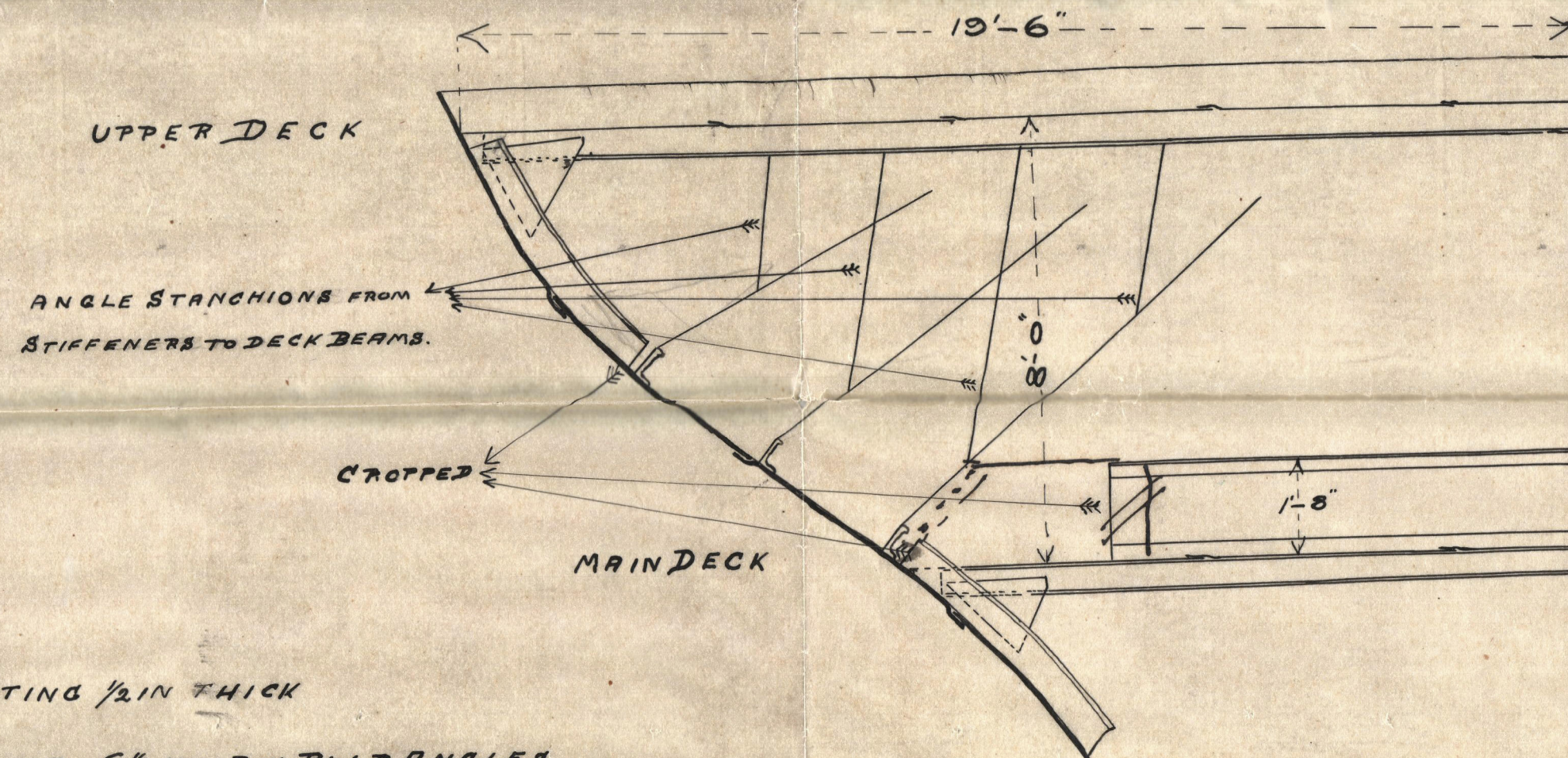
HULL DAMAGE.

SCALE 3/8 IN TO FT.

W893-0070

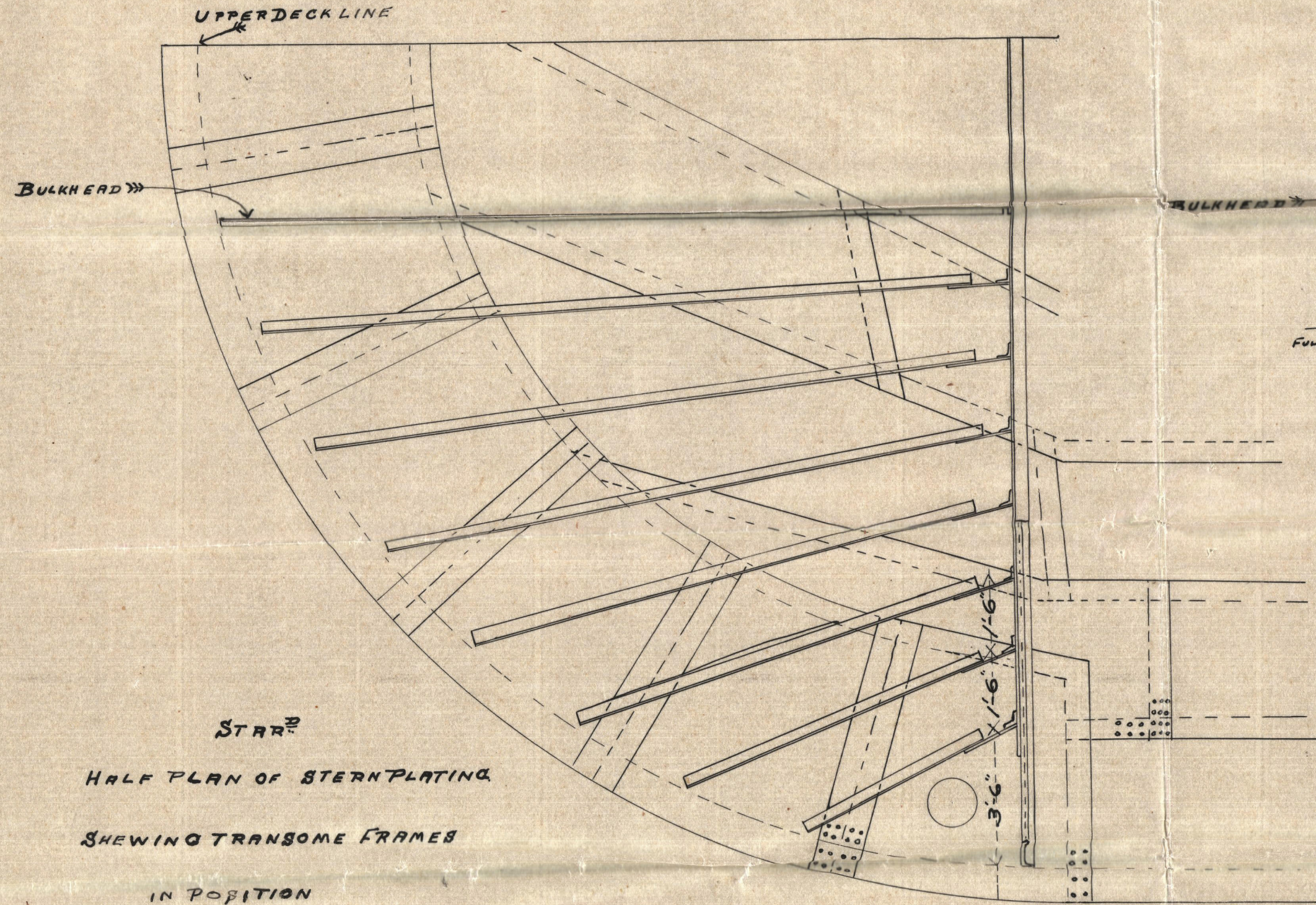


VIEW SHEWING OUTSIDE OF STERN PLATING STARBOARD
 WITH PATCH IN POSITION
 3 SHELL AND 5 TRANSVERSE PLATES DAMAGED

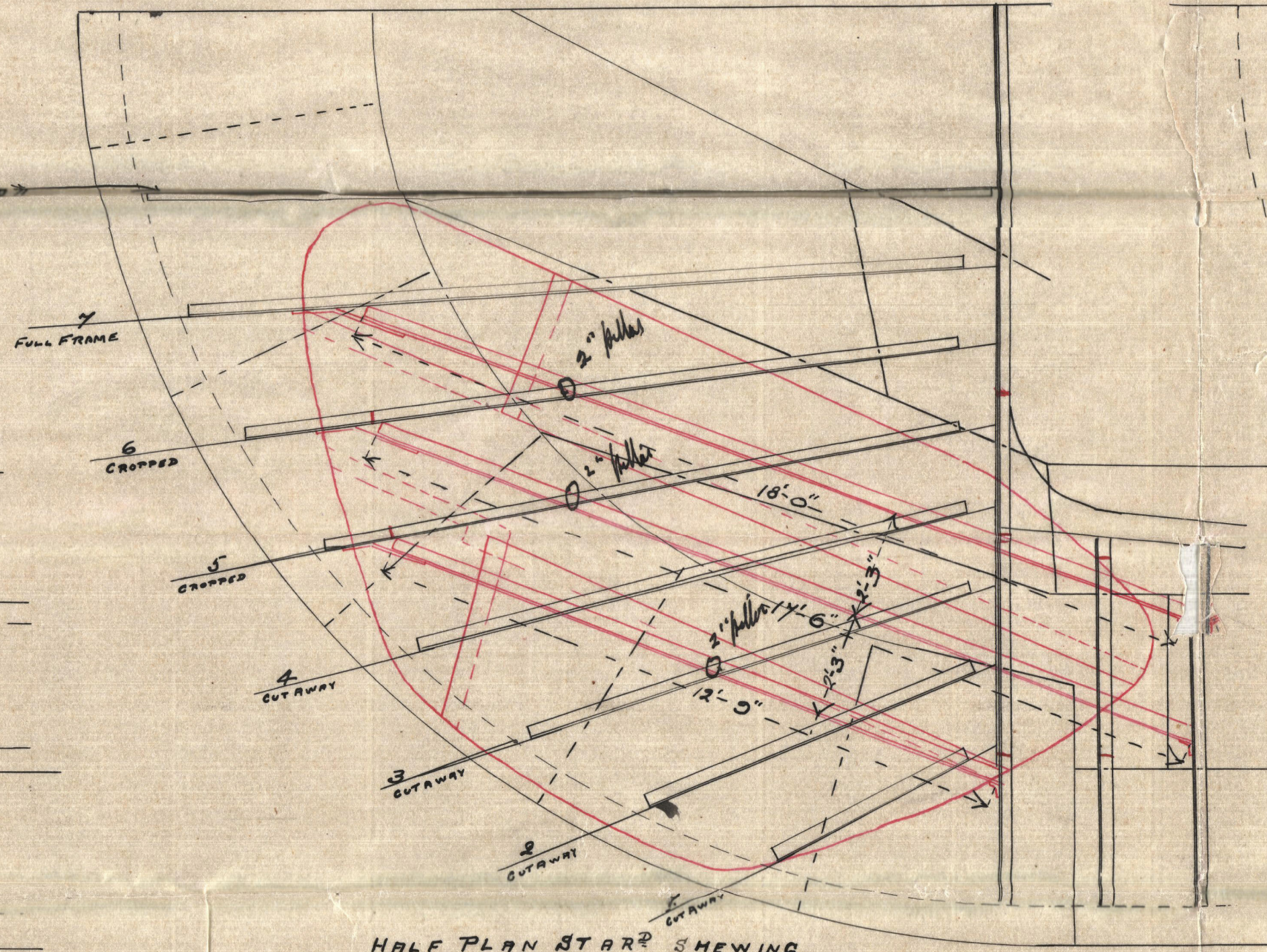


SHELL PLATING 1/2 IN THICK
 DECK BEAMS 6 IN X 3 IN BULB ANGLES
 TRANSVERSE FRAMES 4 IN X 3 IN
 TRANSVERSE BEAMS AND FRAMES 6 IN X 3 IN
 PATCH PLATES 1/2 IN THICK

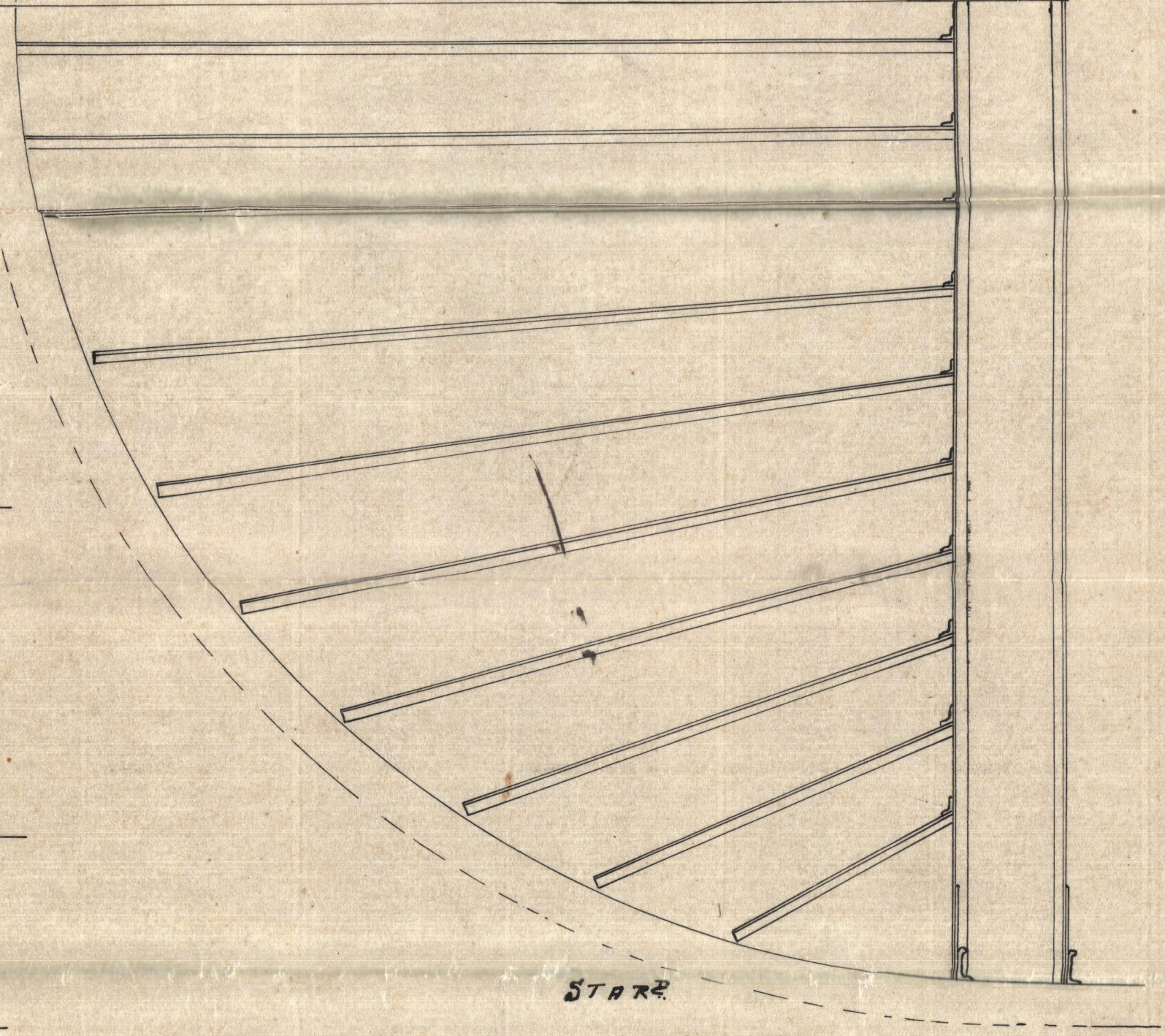
CROSS SECTION LOOKING AFT
 SHEWING LAST TRANSVERSE FRAME
 AND WASH PLATE CROPPED.
 ALSO POSITION OF Y-Y3 BULB STIFFENER
 Wash plate extended & brackelled
 all cropped frames brackelled to bulk



STARBOARD
 HALF PLAN OF STERN PLATING
 SHEWING TRANSVERSE FRAMES
 IN POSITION



HALF PLAN STARBOARD SHEWING
 POSITION OF PATCH AND STIFFENERS,
 AND TRANSVERSE AND TRANSVERSE FRAMES CROPPED.
 NOS. 1-2-3-4-5 AND 6 " " " AS SHEWED
 LAST AND NEXT TRANSVERSE " " " "



VIEW SHEWING POSITION OF TRANSVERSE
 BEAMS ON UNDERSIDE OF UPPER DECK

S/S Folia
Repairs made in
Montreal

"A11072.2"

ADDED DAMAGE

QUARTER 3 IN 10 FT.

© 2020

Lloyd's Register
Foundation

W893-0070