

MATERIAL

ALL PLATES RIVETS & STAYS OF STEEL
TUBES OF IRON

LIMITS OF TENSILE STRENGTHS	
SHELL PLATES BUTTS RIPS &	24 3/4 33
MANHOLE RING	20 3/4 33
GRIPPER PLATES	24 3/4 33
ALL OTHER PLATES	26 50
LARGE STAYS	28 32
SMALL STAYS & RIVET BARS	26 30
FURNACES	26 30

MULTITUBULAR BOILERS N° 1788 (PAIR)

TESTED TO LLOYDS & FRENCH LAW REQUIREMENTS

FOR 180 LBS PER SQ" WORKING PRESSURE

SCALE 1" = 1 FOOT

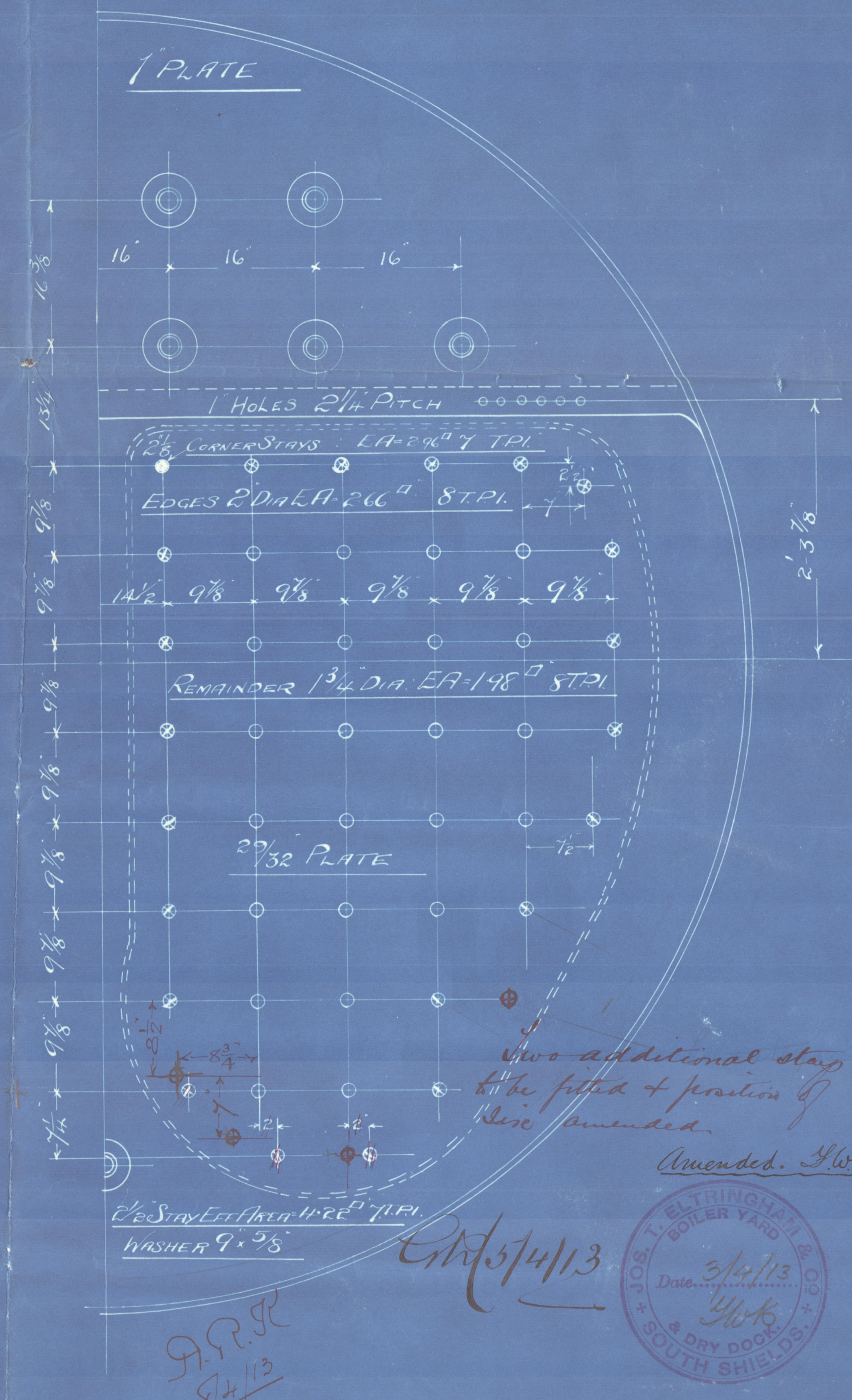
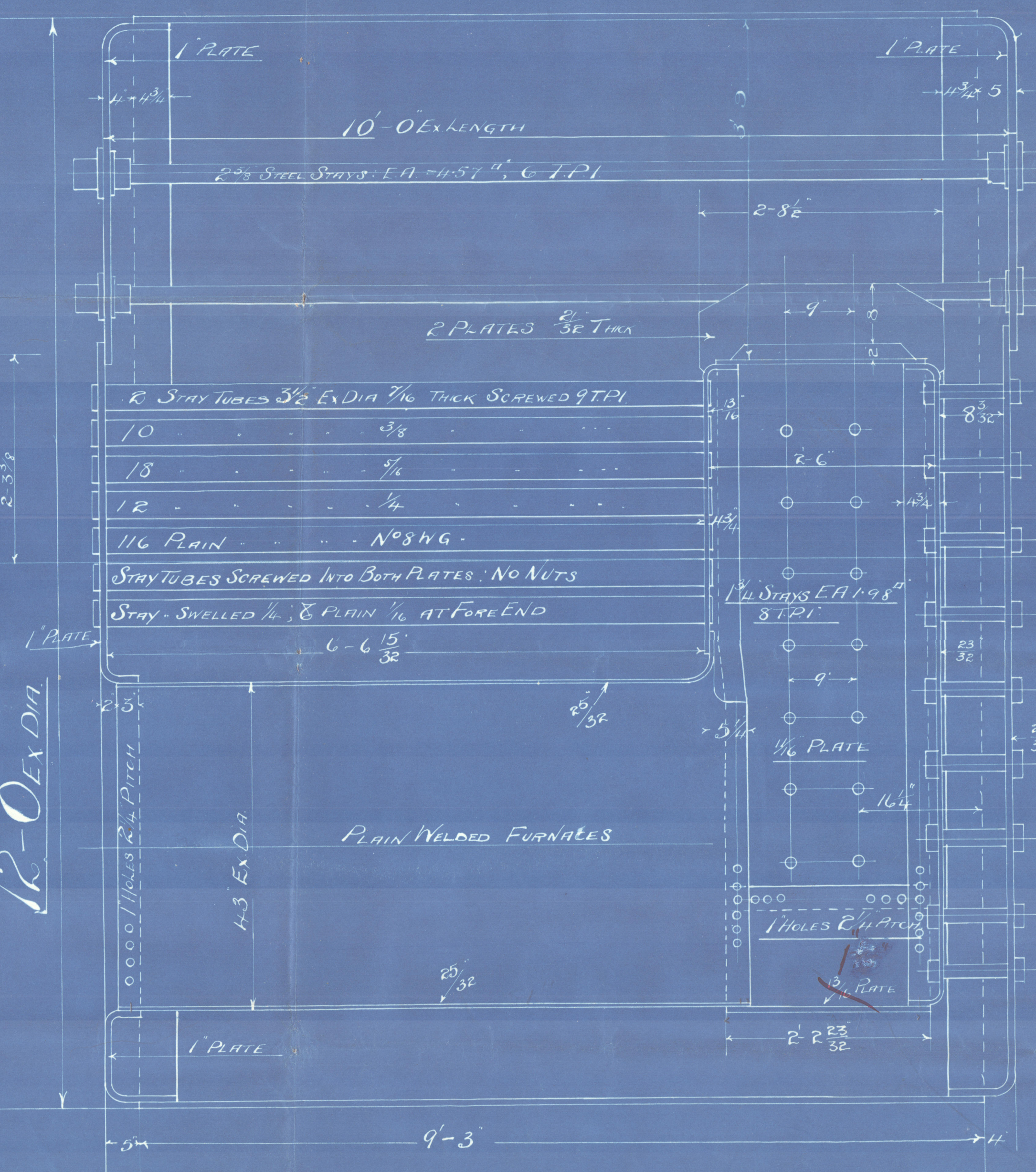
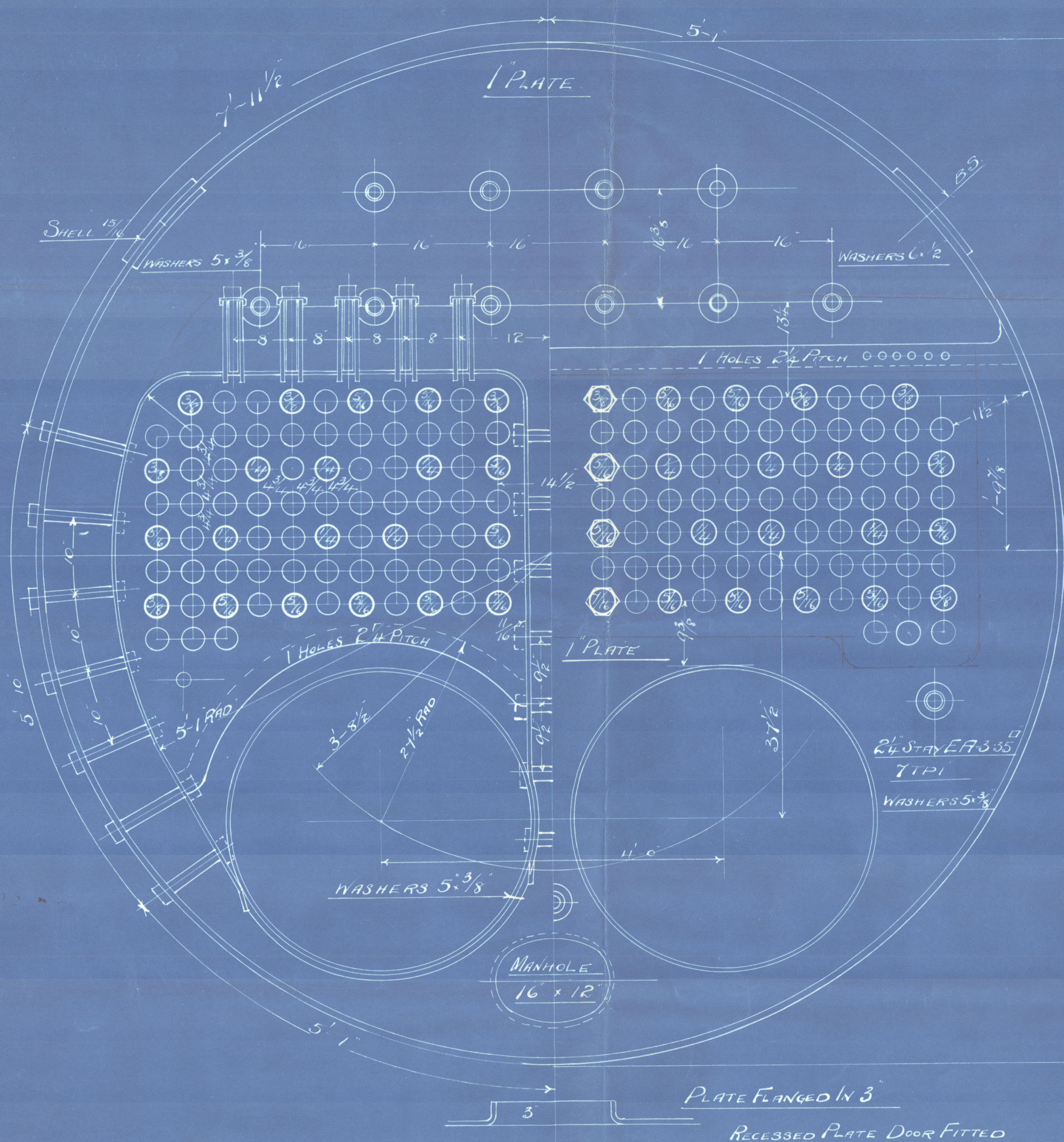
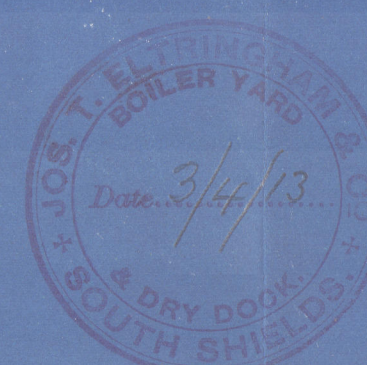
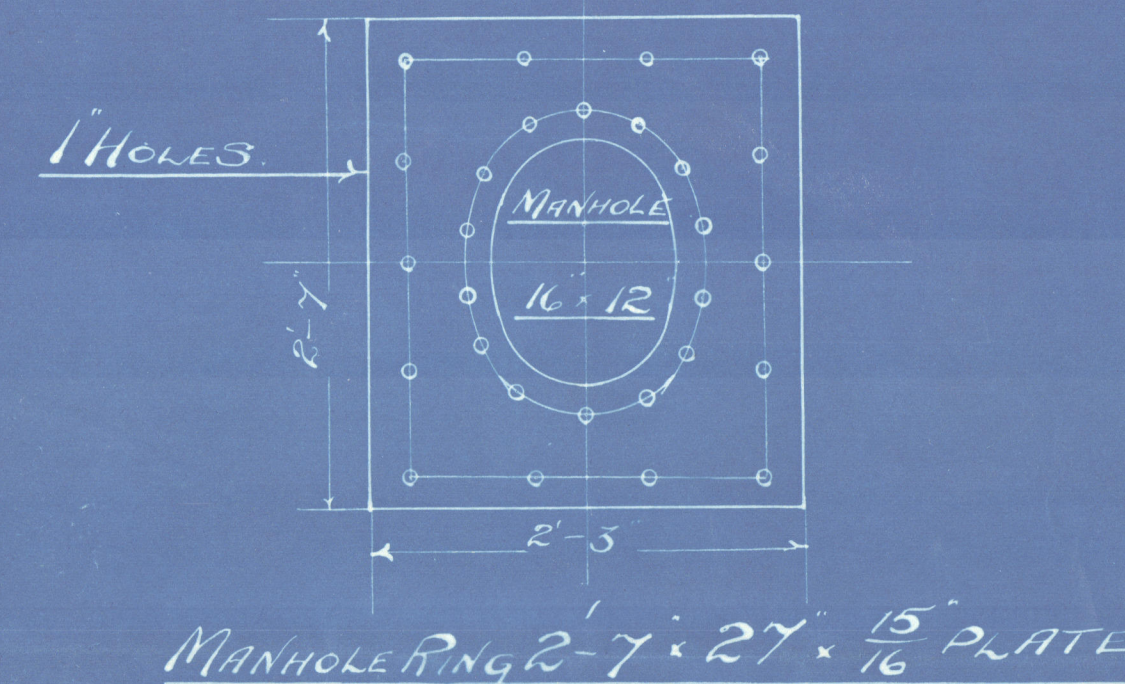
1 HOLES 7" PITCH 85%

INNER BUTTSTRAP 15" x 7/8"
OUTER 15" x 7/8"

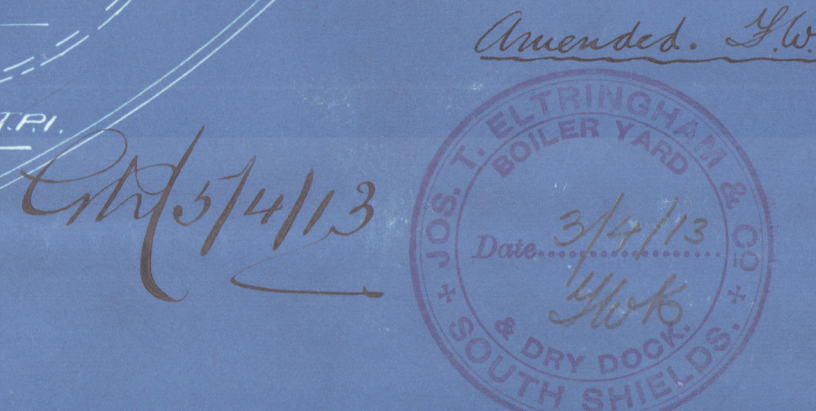
1 HOLES 3 1/4" PITCH
143 1/4%

HEATING SURFACE

TUBES	950 #
FURNACES	101 #
TUBE PLATES	46 #
C. CHAMBERS	123 #
TOTAL	FOR 1 BOILER 1220 #



Two additional stays
to be fitted + position of
these amended.



DRAWING N° B 901

Jos I. C. Stringham & Co
Boilers No 1788

Two 8 1/2
180 lb pr 10.

Osborne Graham & Co 174

G & Grey No 535

S. S. Regulator }
Rouen }

NEWCASTLE-ON-TYNE.

Report No 64996

Sunderland Report

No 25901



© 2020

Lloyd's Register
Foundation

W891-0155