

- PRINCIPAL DIMENSIONS

LENGTH OVERALL	135 - 9"
LENGTH ON 6 TH WL	114 - 0"
BREADTH M ^{LD}	29 - 0"
DEPTH M ^{LD}	14 - 8"
DRAFT	12 - 9"

=LIGHTSHIP N^o 19 FOR HALIFAX

MIDSHIP SECTION

SCALE $\frac{1}{2}$ " = ONE FOOT

AVING LUCK.



- HAWSERS

THE CONTRACTOR WILL SUPPLY			
75 FATHOMS	9 INCH MANILA HAWSER		
2 EACH	30 FATHOMS	5	
	2 COILS	4 3/4	
		3 1/2	

- SCANTLING NUMBERS

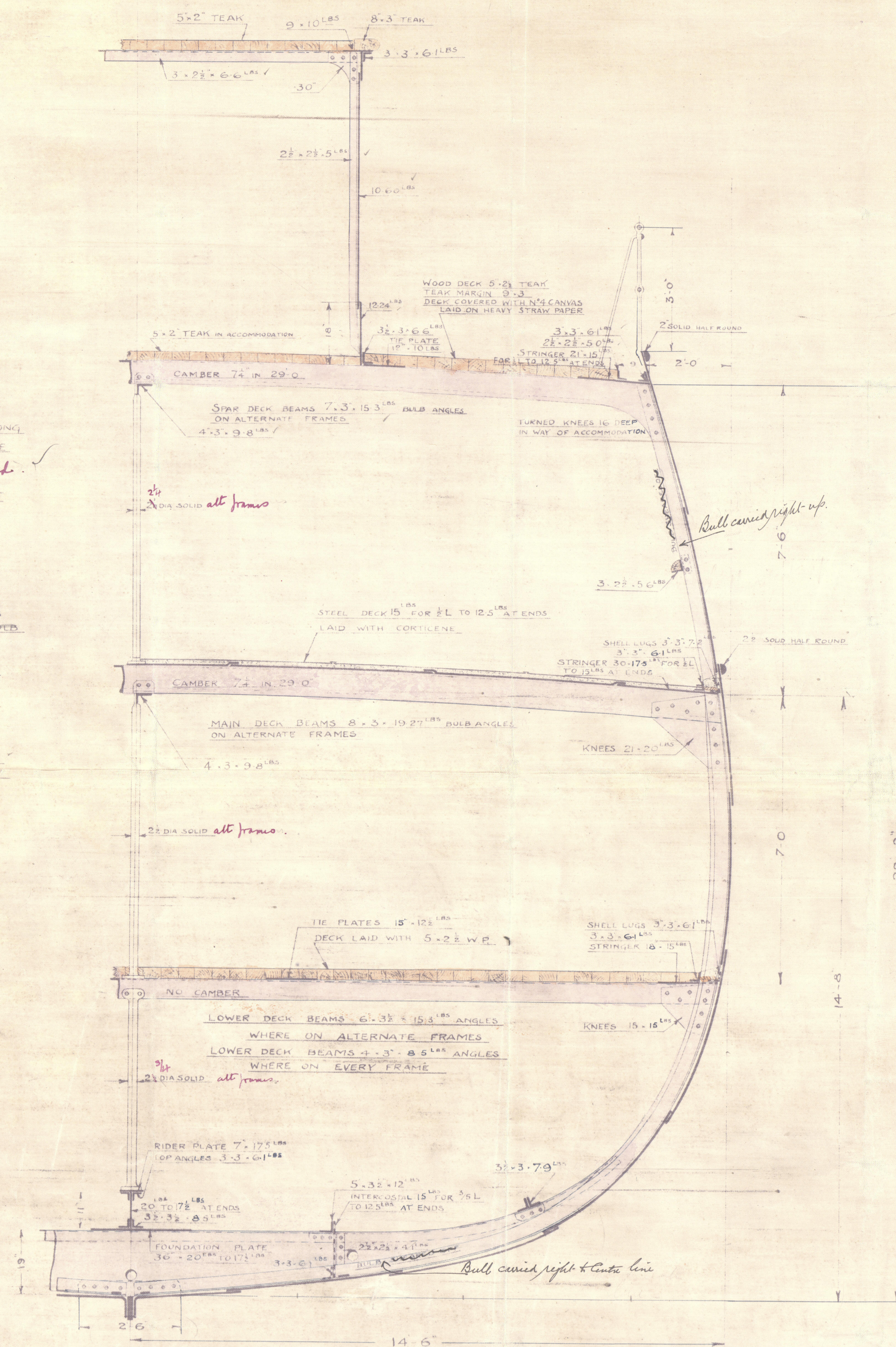
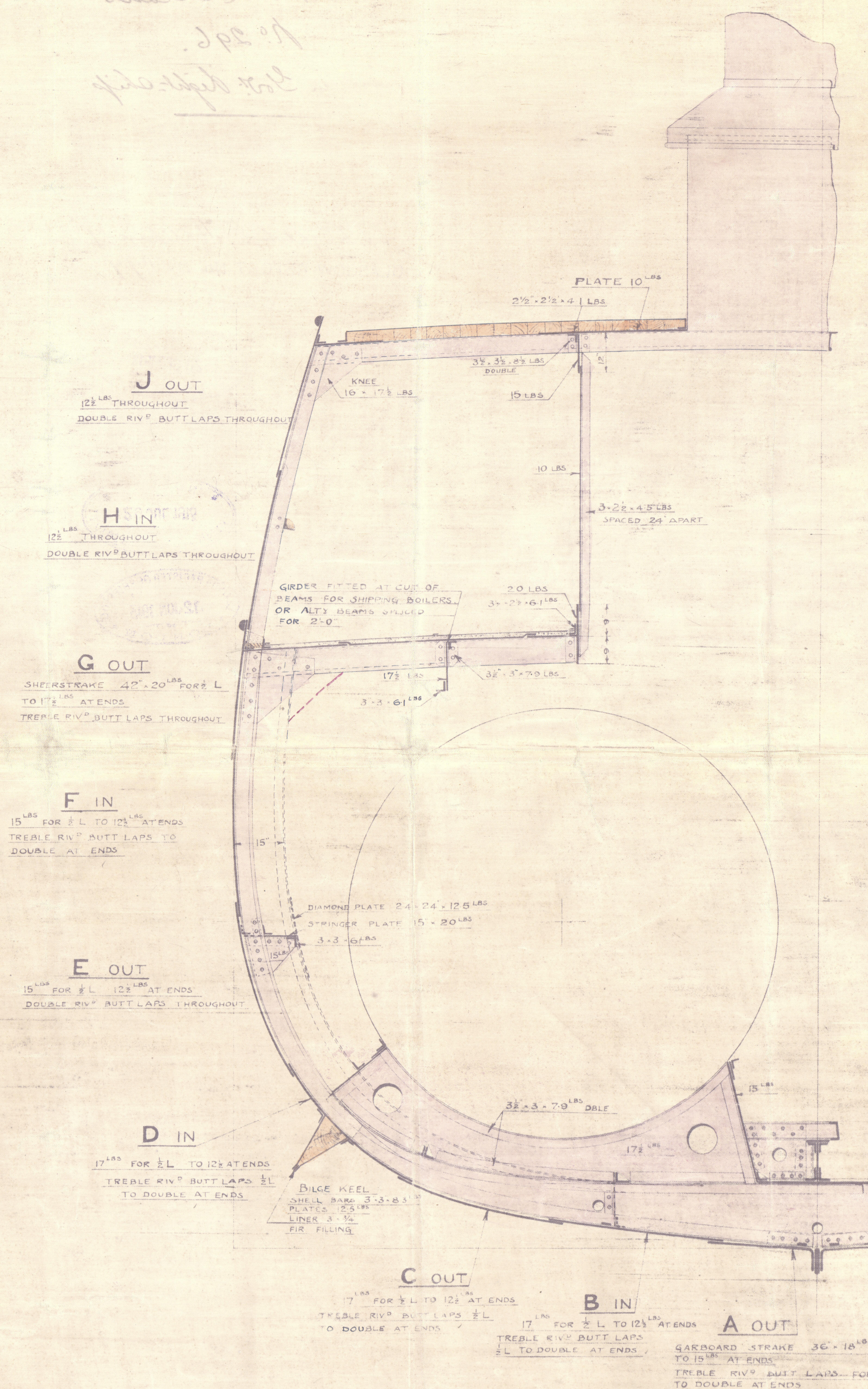
TRANSVERSE	NUMBER	$B + D$	$= 43.67$
LONGITUDINAL	"	$L(B + D)$	$= 5087.5$
		d	$= 13' - 1"$

EQUIPMENT NUMBER

116.5' = L (B + D)	5087.5 ✓
ADD FOR SPAR DECK	655 ✓
DECK HOUSE	157.5 ✓
NUMBER	5900.0 ✓

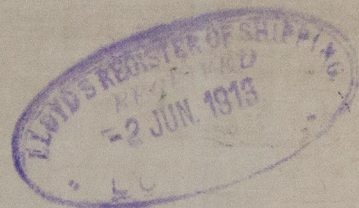
- MAIN SCANTLING S-

KEEL 7 x 1^{3/8} ROLLED STEEL BAR SCAPH 20' LONG
STEM 62, 1/8 FORGED STEEL WITH BOM FOR HAWSE PIPE
PROPELLER POST 6 x 3^{3/4} 2nd STEEL } to be submitted
RUDDER POST 6 x 3^{3/4} }
LOVER END OF SCAPH 20' LONG
RUDDER STOCK 4 1/2 DIA } as per rule.
RUDDER PINTLES 2 1/2 DIA }
FRAMES 51 x 5 1/2 x 12 LB RIB ANGLES
SPACED ABOUT 18" FROM STEM TO FRAME 17
18" SPACED 17 " 73 "
SPACED ABOUT 15 " 73 TO STEM
FRAMES TO EXTEND TO MAIN & SPAR DECK
ALTERNATELY CLOSE TO SPAR DECK LEAVING BUTT
SQUARED OFF
REVERSE FRAMES 31, 25, 15 LB
DOUBLED IN WAY OF ENGINE & BOILER SPACE
& CHAIN LOCKER
CANT FRAMES 31 x 3, 79 lb *Bennygo's satisfaction*
WEB FRAMES ON FRAMES 38, 47, 51 & 60
PLATE 15 x 25 lb
FACE BAR ANGLE 3 1/2 x 3, 70"
FLOORS 10 DEEP 15 LB IN UNDER ENGINE & BOILER
STIFFENERS 12 IN FRAMES 12, 51, 4, 73, 77
FRAMES 31, 25, 15 LB
LOWER PLATING 15, 25 LB TOP PLATING 10 LB
PLATED HORIZONTALLY
VERTICAL STIFFENERS
SPACED 24" APART
HORIZONTAL STIFFENERS 31 x 3, 70 LB ANGLES
BULKHEAD 42 x 56 STIFFENERS TO BE 5 x 3 x 3/8 BA
BUNKER BULKHEAD BRACED BY 6 x 3 x 3/8 L BKT TO BHDS

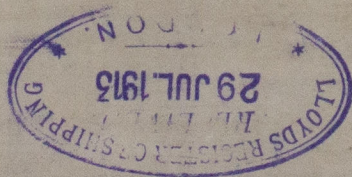


N^o 296

Midship Section
Bow MacLachlan's
No 296.
Canadian Govt. Light-ship



S.S. Lightship "Halifax 19."
GLASGOW REPORT No: 33899.



RETAIL

W890-0104



© 2020

Lloyd's Register
Foundation