

471 SHIP.
N^o 2087 D^N

MIDSHIP SECTION.

380' 0" B.P. x 51' 9 1/4" MLD. x 29' 6" MLD.

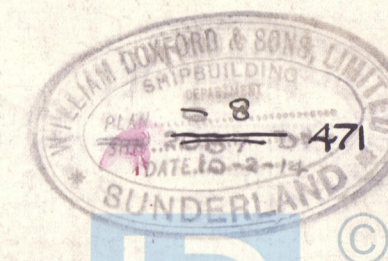
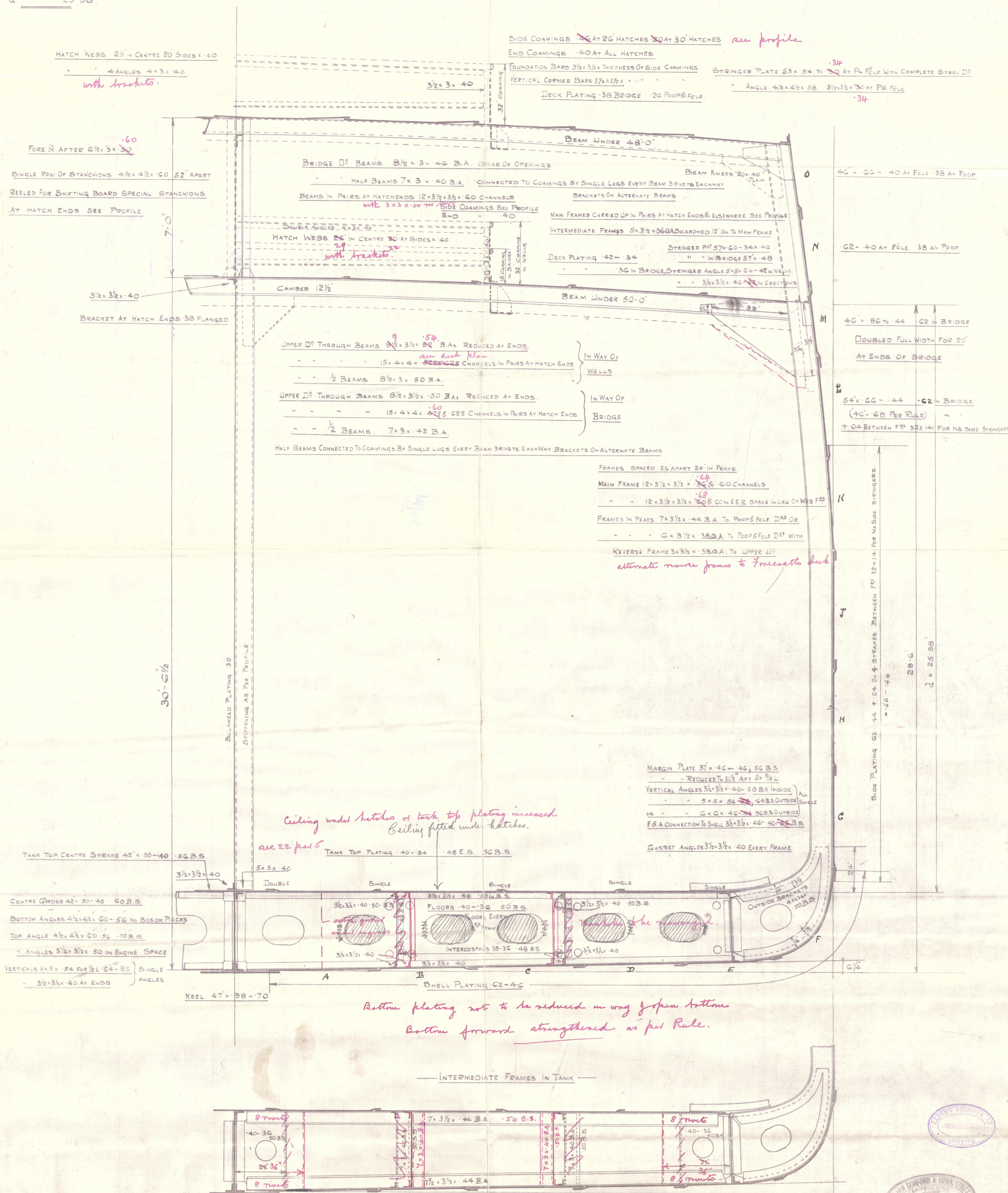
TO CLASS 100A.1 LLOYDS.

SCALE 1/2" = 1 FOOT.

NUMERALS	
BREADTH MLD.	51.77
DEPTH MLD.	29.50
LENGTH	380
P.B. & F.C.L. 200-17 x 7 x .75	30883
CASINGS & HOUSES	1050
	250
	32197
EQUIPMENT N ^o	
L/D (W)	= 12.88
L/D (B)	= 10.41
L/D	= 25.98

EQUIPMENT	
3 BOWER ANCHORS	STOCKLESS 160 CWTs COLL ^{rs} W ^t
1 STREAM ANCHOR	15 CWTs. EX STOCK
1 KEDGE	- 6 1/2 -
270 FATHOMS	2 1/2" STUD CHAIN CABLE
90 -	4 1/2" S.W. STREAM LINE
120 -	4 1/2" S.W. TOW LINE
4 OF 90 -	EACH 2 1/2" S.W. HAWERS & WARPS.

own's contract to
sub wms.



Cf.
21.2.14

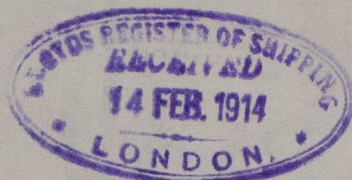
M/M

W. Dorr Ford & Sons

Proposed ~~28~~

N° 471

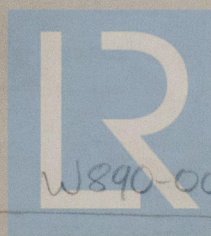
MID. SECTION



P.S. Indian City

Plcl. Report N° 26343

RETAIN



© 2020

Lloyd's Register
Foundation

W890-0076