

PARTICULARS FOR FREEDOM.

LENGTH BETWEEN PERPENDICULARS 340'-0"

BREADTH EXTREME 46'-2"

DEPTH MOULDED TO U.D. AT MIDDLE OF LENGTH 22'-11 1/2"

DO. OF HOLD CELL D.B. TO U.D. DO. 20'-7 1/2"

TONNAGE UNDER DECK 2600 TONS

DO-EFFICIENT & FINENESS (CORRECTED)

LENGTH OF FORECASTLE 37'-5 1/2" AT SIDE 33'-4 1/2" AT CENTRE 7'-6" HIGH

SCANTLING 100 A.I. SHELTER DECK

ROUND OF BEAM 11"

SHEER AFTERSIDE STEAM POST 3'-6" FORE SIDE STEAM 7'-0"

DO 8' LEN. FROM DO 1'-10 1/2" 18' LEN. FROM DO 3'-11"

COMPLETE SHELTER DECK 8'-9" HIGH, WITH TONNAGE 4400

SHELTER DECK OF STEEL AND SHEATHED WITH PITCH PINE 3" THICK.

7.10.09
18.10.09
8.12.09
14.12.09
21.3.10

PROFILE & DECK PLANS S.S. No 414.

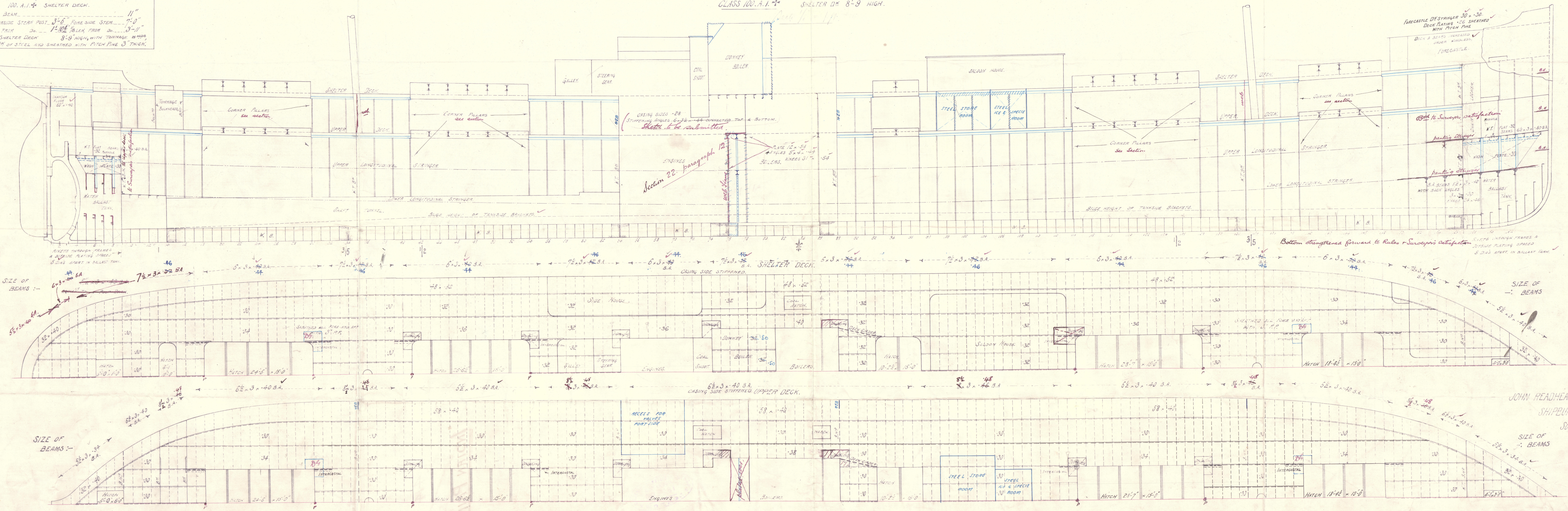
DIMENSIONS AS PER RULE.

LENGTH 340'-0"

BREADTH 46'-0"

DEPTH 22'-11 1/2" TO U.D.

CLASS 100 A.I. SHELTER DECK 8'-9" HIGH.



JOHN READHEAD & SONS LTD
SHIPBUILDERS, ETC
SOUTH SHIELDS.

NEWCASTLE - ON - TYNE

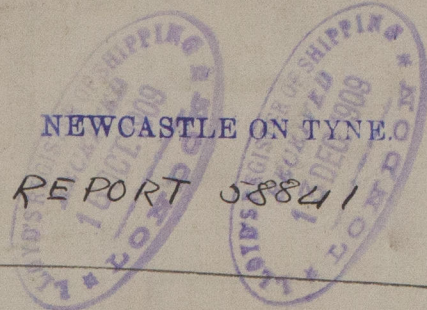
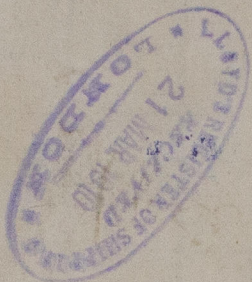
PROFILE & DECK PLANS -

John Readhead & Sons Ltd -

No 414.

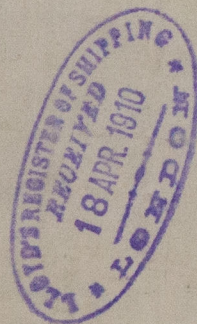
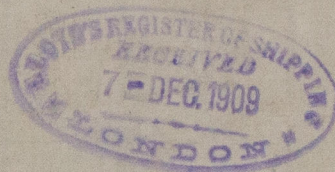
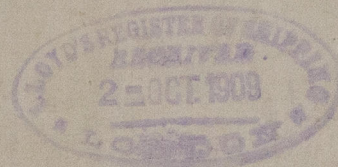
- Class 100 A1. "Shelter deck" -

"INDIAN PRINCE" *cont.*



NEWCASTLE ON TYNE.

REPORT 58841



RETAILED



W896-0069

© 2020

Lloyd's Register
Foundation