

(LLOYDS REGISTER.)

G. R. 120
Lloyds Register

REGISTER OF
SHIPS
25 JUL 1910
LONDON

VESSELS OF 100 TONS AND UPWARDS.

These particulars are supplied by the Registrar General of Shipping and Seamen for the sole use of Lloyds Register of British and Foreign Shipping.

Signal Letters (if any) *H. R. K. C.*

Official Number.	Name of Ship.	No., Date, and Port of Registry.
129455	<i>Indian Prince</i>	15 1910, Newcastle
No., Date, and Port of Previous Registry (if any). <i>First Registry</i>		
Whether British or Foreign Built.	Whether a Sailing or Steam Ship; and if a Steam Ship how propelled.	Where Built.
<i>British</i>	<i>Steam Screw</i>	<i>South Shields</i>
		When Built.
		1910
		Name and Address of Builders.
		<i>John Readhead & Sons Ltd. South Shields</i>
Number of Decks	<i>One & shelter deck</i>	Length from fore part of stem, under the bowsprit, to the aft side of the head of the stern post
Number of Masts	<i>Two</i>	Length at quarter of depth from top of weather deck at side amidships to bottom of keel
Rigged	<i>Schooner</i>	Main breadth to outside of plank
Stern	<i>Elliptical</i>	Depth in hold from tonnage deck to ceiling at midships
Build	<i>Clincher</i>	Depth in hold from upper deck to ceiling at midships, in the case of three decks and upwards
Galleries	<i>none</i>	Depth from top of beam amidships to top of keel
Head	<i>none</i>	Depth from top of deck at side amidships to bottom of keel
Framework and description of vessel	<i>Steel</i>	Round of beam
Number of Bulkheads	<i>Six</i>	Length of engine room if any
Number of water ballast tanks, and their capacity in tons	<i>Seven</i>	
	<i>= 440 tons</i>	

PARTICULARS OF DISPLACEMENT.

Total to quarter the depth from weather deck at side amidships to bottom of keel *5923* Tons. Ditto per inch immersion at same depth *31.6* Tons.

PARTICULARS OF PROPELLING ENGINES, &c. (if any).

No. of sets of Engines.	Description of Engines.	Whether British or Foreign made.	When made.	Name and address of makers.	Reciprocating Engines. No. and Diameter of Cylinders in each set.	Length of Stroke.	Rotary Engines. No. of Cylinders in each set.	N. H. P. I. H. P. Speed of Ship.
<i>One</i>	<i>Triple expansion Direct Acting Inverted Cylinder Engines</i>	<i>British</i>	<i>1910</i>	<i>John Readhead & Sons Ltd. South Shields</i>	<i>Three</i>	<i>25"</i>	<i>45"</i>	<i>390</i>
No. of Shafts.	Particulars of Boilers.	Boilers.						
<i>One</i>	<i>Cylindrical Multitubular</i>	<i>British</i>	<i>1910</i>	<i>South Shields</i>	<i>42"</i>	<i>69"</i>		<i>2000</i>
	Number <i>Two</i>							<i>12 knots</i>
	Iron or Steel <i>Steel</i>							
	Loaded Pressure <i>160 lbs per sq. inch</i>							

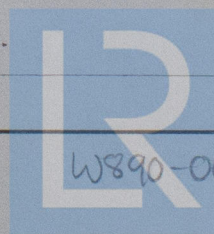
PARTICULARS OF TONNAGE.

GROSS TONNAGE.		No. of Tons.	DEDUCTIONS ALLOWED.		No. of Tons.
Under Tonnage Deck		<i>2611.52</i>	On account of space required for propelling power		<i>910.64</i>
Space or spaces between Decks			On account of spaces occupied by Seamen or Apprentices, and appropriated to their use, and kept free from goods or stores of every kind, not being the personal property of the Crew		<i>84.24</i>
Forecastle	<i>on Shelter Deck</i>	<i>22.19</i>	These spaces are the following, viz.:—		
Bridge space		<i>46.33</i>			
Poop or Break					
Side Houses		<i>49.92</i>			
Deck Houses		<i>49.56</i>			
Chart Houses		<i>3.64</i>			
Spaces for machinery, and light, and air, under Section 78 (2) of the Merchant Shipping Act, 1894.	<i>Houses in Shelter Deck</i>	<i>31.82</i>	Deductions under Section 79 of the Merchant Shipping Act, 1894, and Section 54 of the Merchant Shipping Act, 1906, as follows:—		
Excess of Hatchways		<i>.48</i>	Cubic Metres	<i>Master's Accommodation 9.03</i>	
Gross Tonnage		<i>2845.46</i>		<i>Boatwain's Stores 13.04</i>	
Deductions, as per Contra		<i>1040.45</i>		<i>Chart house 3.64</i>	<i>45.54</i>
Registered Tonnage		<i>1445.31</i>		<i>Water Ballast Spaces 24.36</i>	
				Total	<i>1040.45</i>

NOTE.—The only spaces above the Upper Deck not included in the cubical contents forming the Ship's registered tonnage are:—

Open Passage in Forecastle. Length 24.1 feet = 4.02 tons
Open Spaces under Shelter Deck { Length 288.4 feet = 845.19 tons
{ " 6.1 " = 20.92 "
{ " 24.3 " = 34.41 "

Name of Master	<i>Robert Kirkwood</i>	Certificate of	Service No.	Competency No.
				<i>023064</i>
No. of Owners				
Name, Residence, and Description of Managing Owner if there are more owners than one.	<i>Prince Line, Limited, having its principal place of business at Milburn House, in the City and County of Newcastle-on-Tyne. Sixty-four Shares.</i>			
Manager:	<i>James Knott, of above address.</i>			
Dated	<i>21. July. 1910</i>			



© 2020

Lloyd's Register Foundation