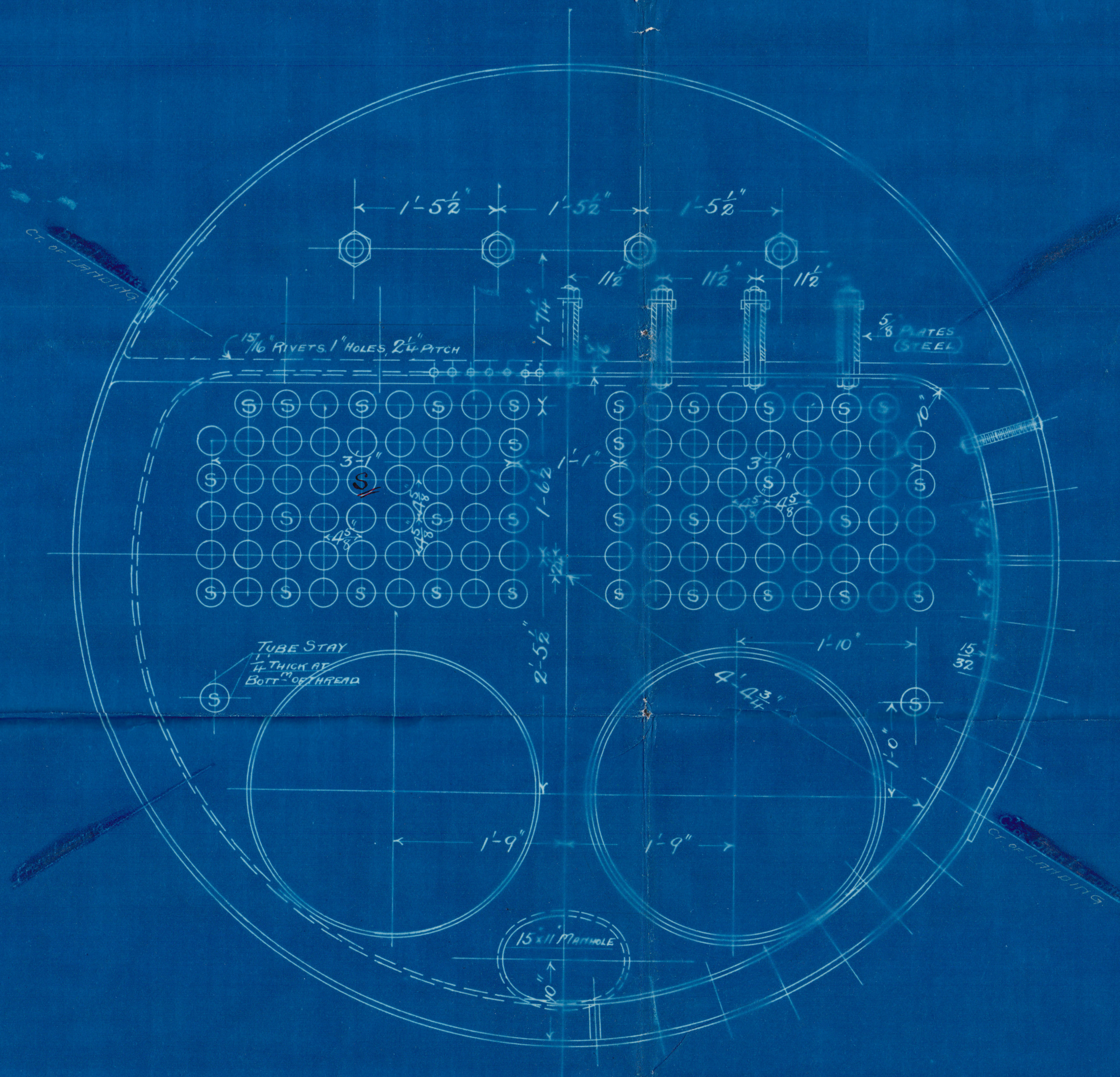
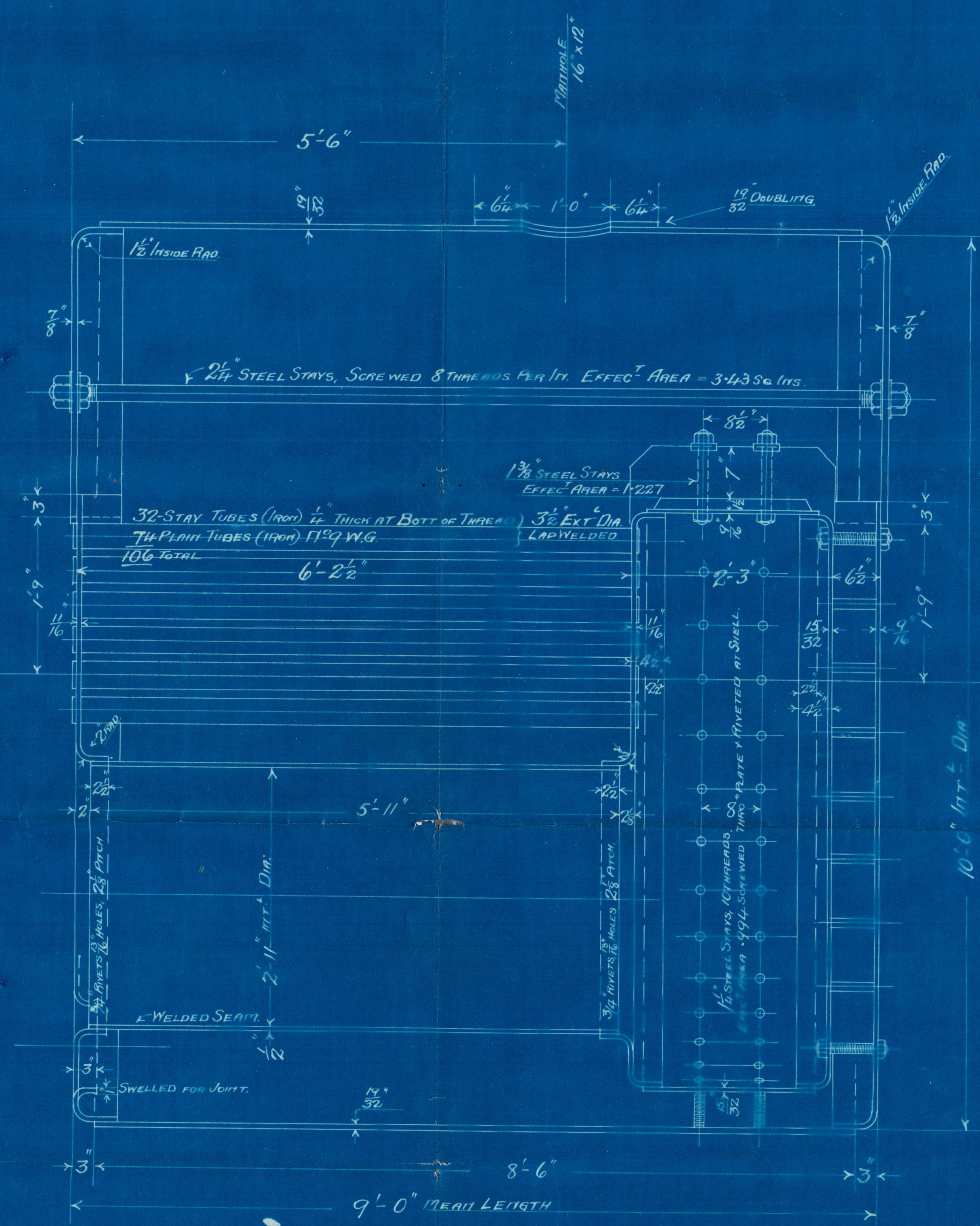


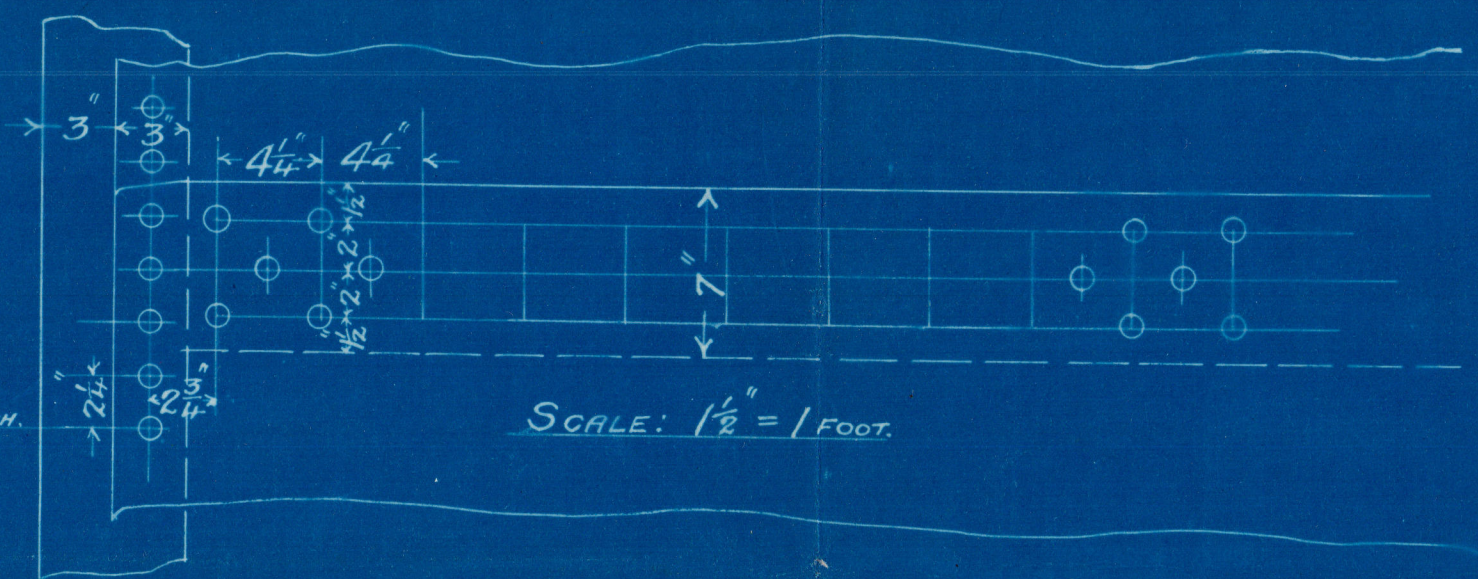
20:10:03



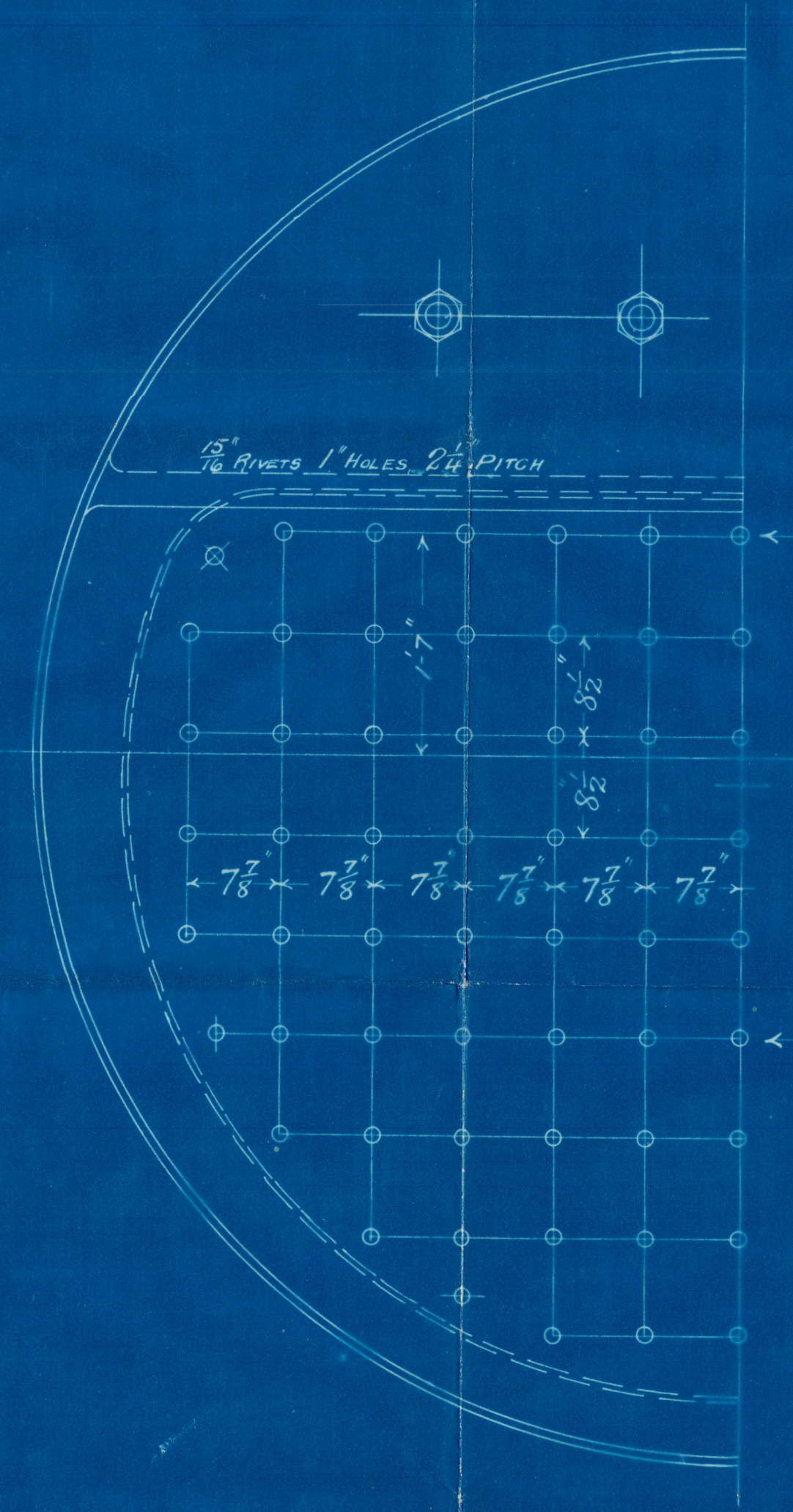
HEATING SURFACE OF TUBES = 608 f²
 " " FURITACES = 59 "
 " " OTHER = 118 "
 TOTAL = 785 f²
 GRATE SURFACE (BARS) = f²



15/16 RIVETS 1" HOLES 2 1/4" PITCH



TENSILE STRENGTH OF SHELL PLATES = 29 TO 32 TONS
 LONGITUDINAL SEAMS, 1" HOLES, PLATE = 76.4%
 RIVET = 79.5%
 TENSILE STRENGTH OF LONGIT. STAYS = 27 TO 32 TONS
 ALL STEEL EXCEPT TUBES

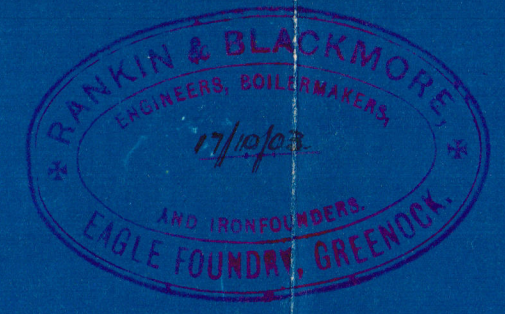


TOP ROW OF STAYS 1 5/8" DIA.
 10 THREADS, EFFEC. AREA = 1.75 Sq. In.
 OUTSIDE & INSIDE ROWS - 1 1/4" DIA.
 10 THREADS, EFFEC. AREA = .994 Sq. In.

W.R.H. 19th Oct. 1903.
 B.S. 20.10.03.
 20.10.03.

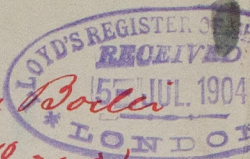
WINCH BOILER FOR N° 243.
 10'-0" MEAN DIA. x 9'-0" LONG x 100 LBS. W.P.

TO PASS LLOYDS SURVEY
 SCALE 1" = 1 FOOT 8/10/03.



Ernest Shackleton & Douglas Mawson

(No 243)



by

Rankin & Blackmore

for

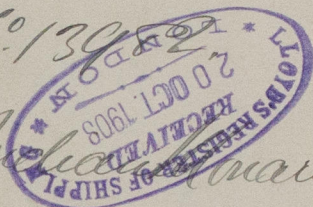
Russell & Co. 5-14 St

100 lbs "Working Pressure"

Greenock & Export.

No 13982

J. H. Macdonald



RETAIN

W890-0009



© 2020

Lloyd's Register
Foundation