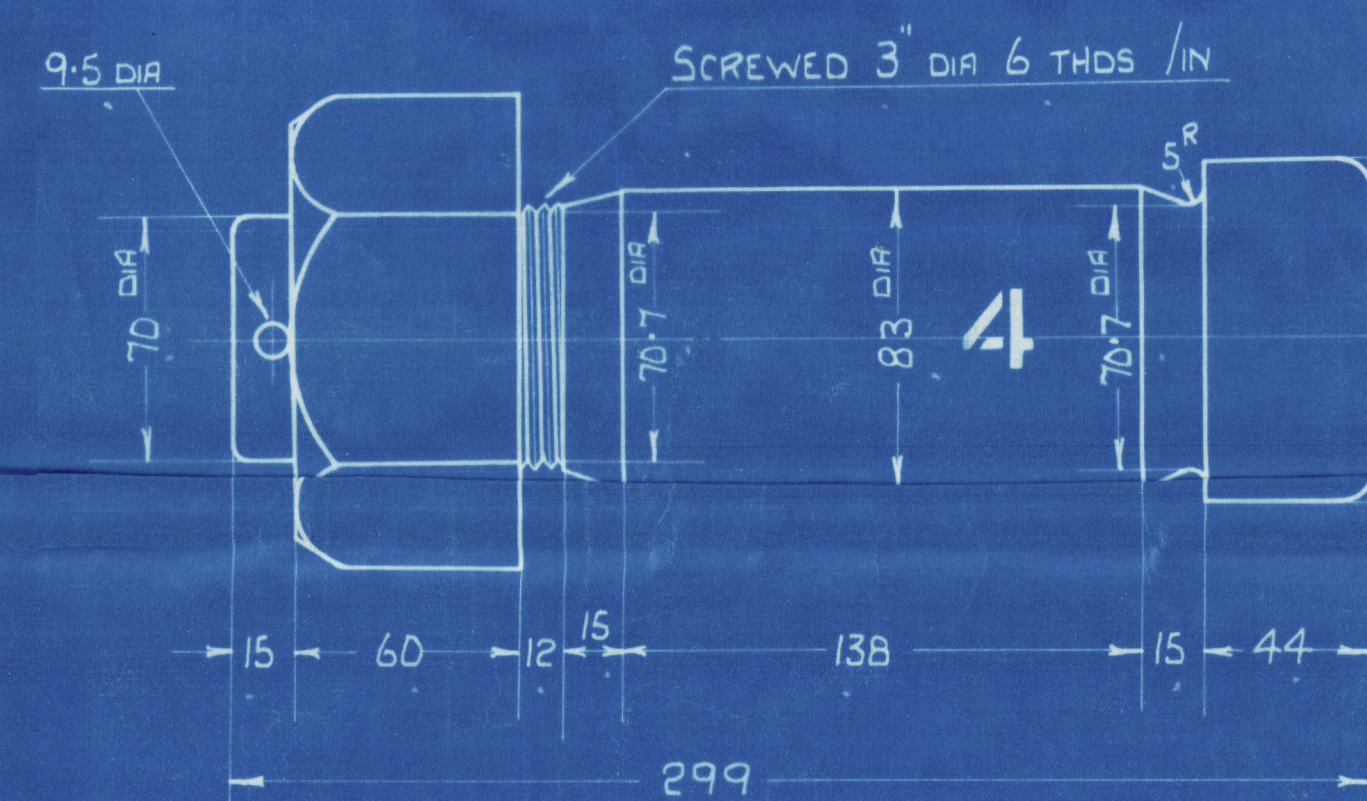
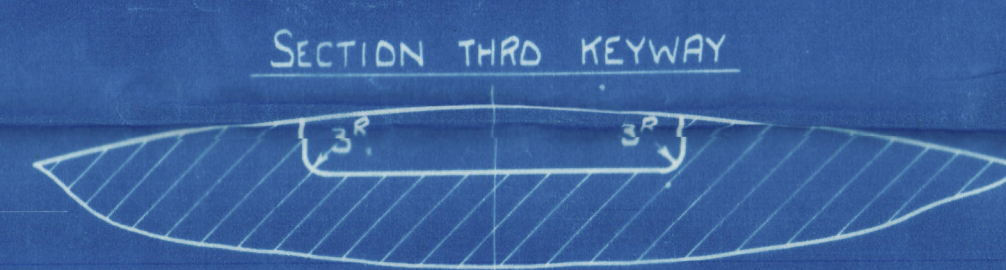


9-83^M/M DIA. HOLES
FOR COUPLING BOLTS

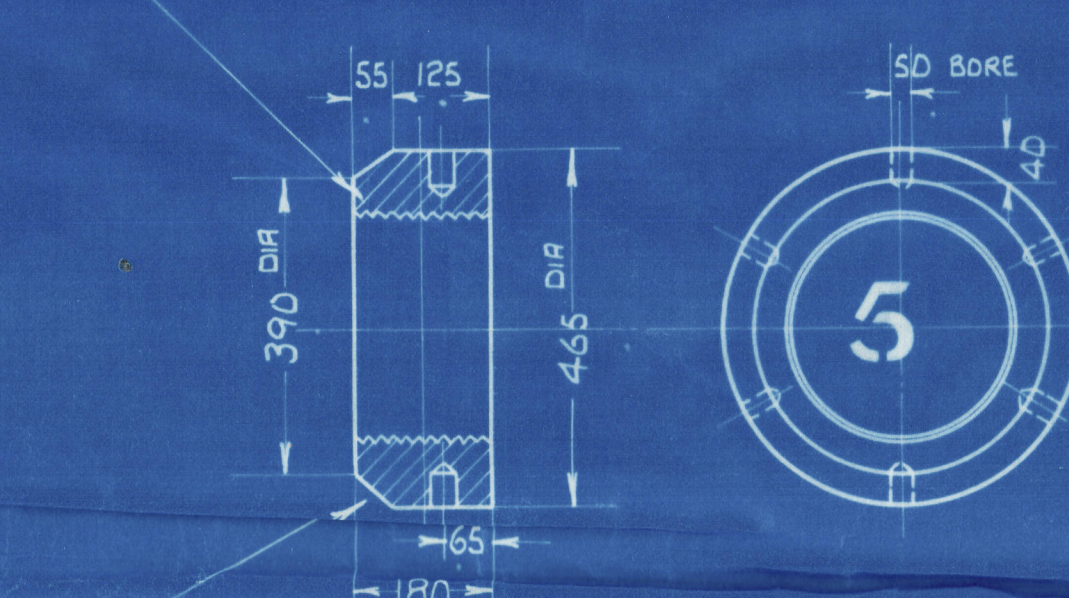


HOLE TO BE DRILLED IN
SHAFT 35^M/M DIA 56^M/M
DEEP FOR LOCKING PIN

DETAIL OF WATER GROOVE

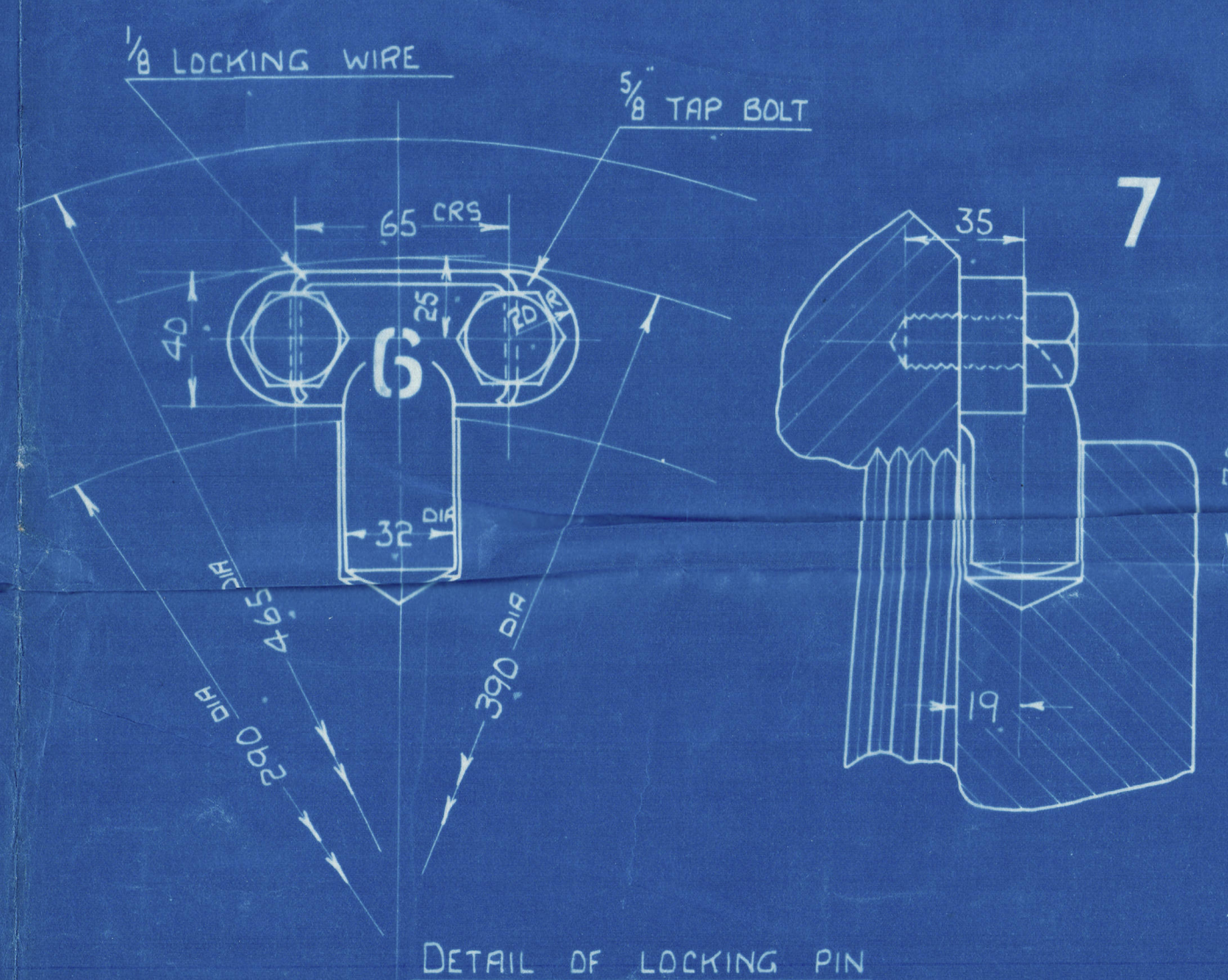


3/8" PITCH LEFT HAND
THREAD TO SUIT SHAFT



NUT TO BE BEVELLED THUS TO
CLEAR INSIDE OF CONE PIECE
JOINING PROPELLER BOSS

| | |
|---------------------------|-----|
| SHOPWORK TO BE CHARGED TO | \$1 |
| SHIPWORK | \$ |



DETAIL OF NECK

| PART No. | DESCRIPTION | No. Off | MATERIAL | REMARKS |
|----------|----------------------|---------------|----------|------------------|
| 8 | PROPELLER KEY | 2 | M.S. | 1 SPARE INCLUDED |
| 7 | 1/8" TAP BOLTS | 2 | M.S. | |
| 6 | LOCKING PIN | 1 | M.S. | |
| 5 | TAIL END SHAFT NUT | 2 | M.S. | 1 SPARE INCLUDED |
| 4 | COUPLING BOLTS | 18 | M.S. | 9 " " |
| 3 | TAIL END SHAFT LINER | 2 | G.M. | 1 " " |
| 2 | TAIL END SHAFT | 2 | I.S. | 1 " " |
| 1 | INTERMEDIATE SHAFT | 1 | I.S. | |
| | | FOR TOTAL No. | | |

DRG. No. 4864

DRAWER No. 2

TYPE GO LB 4.

C. No. 177-S

J. H. F.
24/2/30



SUNDERLAND.

Hayford & Sons

bs. 177-8

Shafting

Drawing no. 4864

~~GEN. BOX NO~~

~~451~~

Mr J. Laing & Sons

Yard no. 709 + 710

Thos. Laing

W89-0222

© 2021

