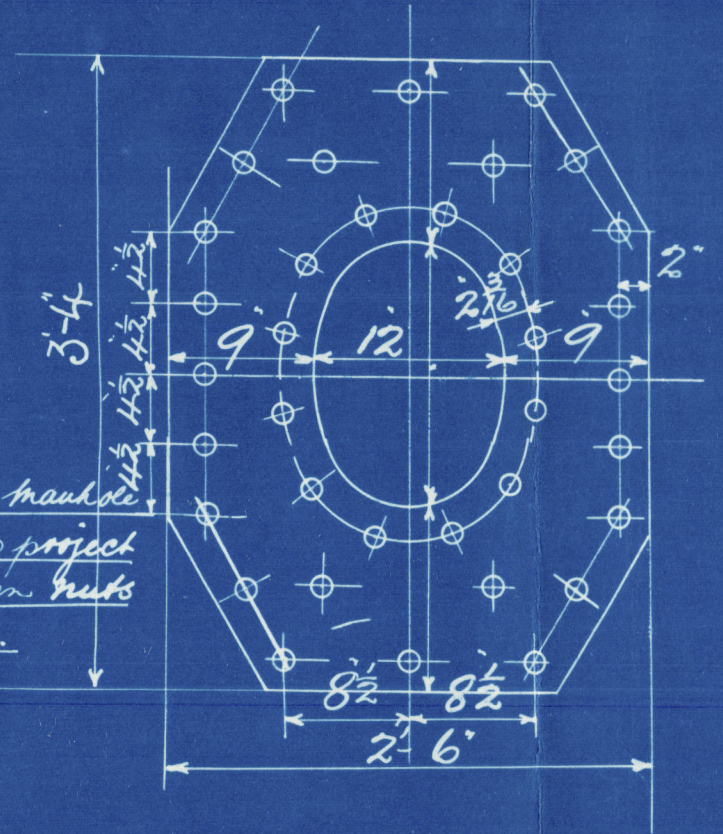


DIA. OF BOILER 15'-0"  
 LENGTH OF DO 11'-0"  
 NUMBER OF TUBES 248  
 LENGTH OF DO 4'-2 1/2" between plates  
 DIA. OF DO 3 1/2" AREA THRU TUBES  
 HEATING SURFACE IN TUBES 1638  
 TOTAL HEATING SURFACE 2050 sq. ft.  
 FIRE BAR SURFACE  
 DIA. OF SAF VALVES  
 CUBIC FEET OF STEAM PAGE 6 above C.C. 340 ft.  
 WORKING PRESSURE 180 lbs. LLOYDS

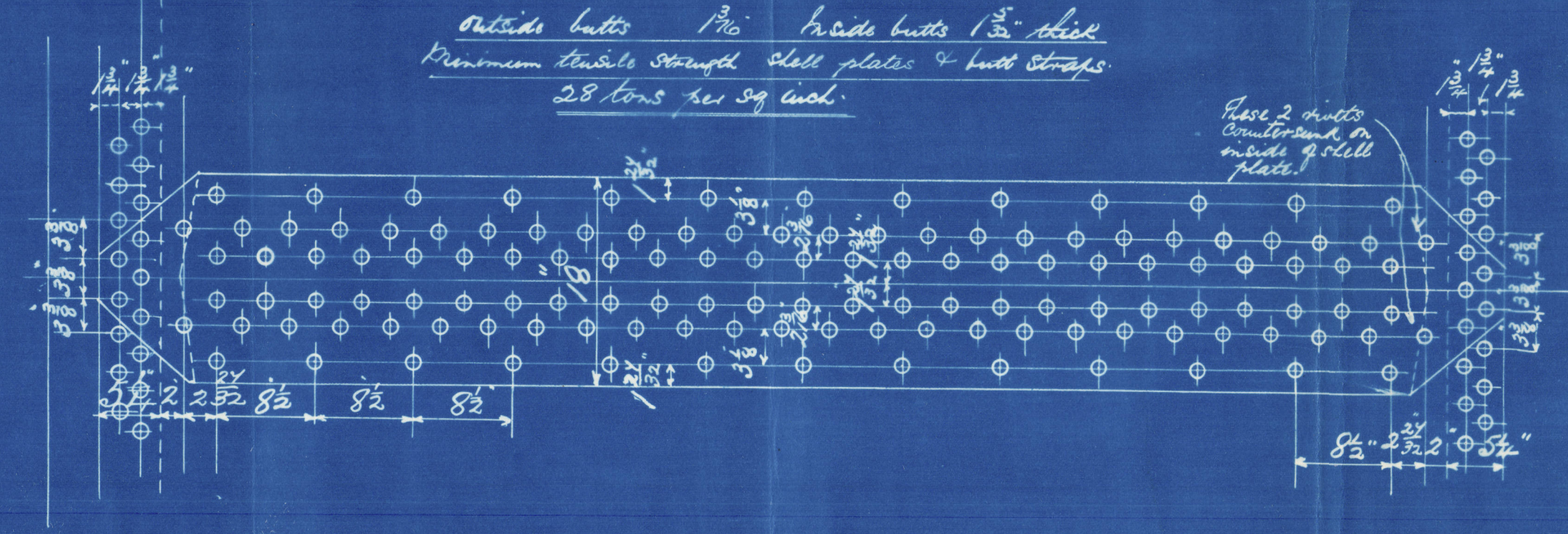
2/3/09

Doubling plate 1 1/2"  
 1 1/2" rivets 1 1/2" holes  
 Fitted outside shell with short axis  
 long longitudinally



Note: Slits on mandrel  
 doors are not to project  
 through nuts when tubes  
 are ripped up.

Circumferential Seams  
 1 1/2" Rivets 1 1/2" holes 3 1/2" pitch  
 1/2" plate 64.8  
 7/8" rivet 4.4  
 Longitudinal Seams  
 1 1/2" Rivets 1 1/2" holes 8 1/2" pitch  
 1/2" plate 65.6  
 7/8" rivet 65.9

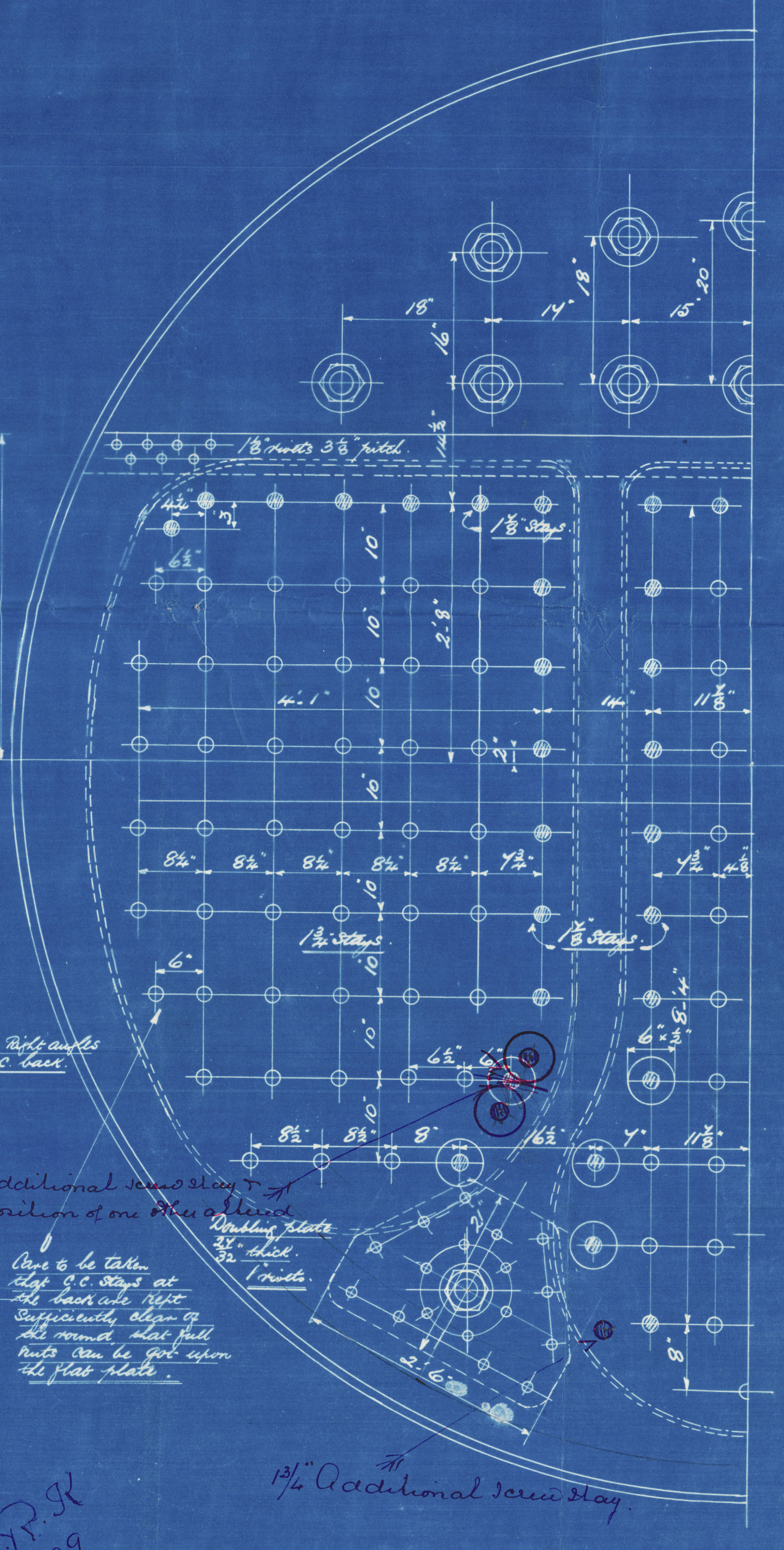
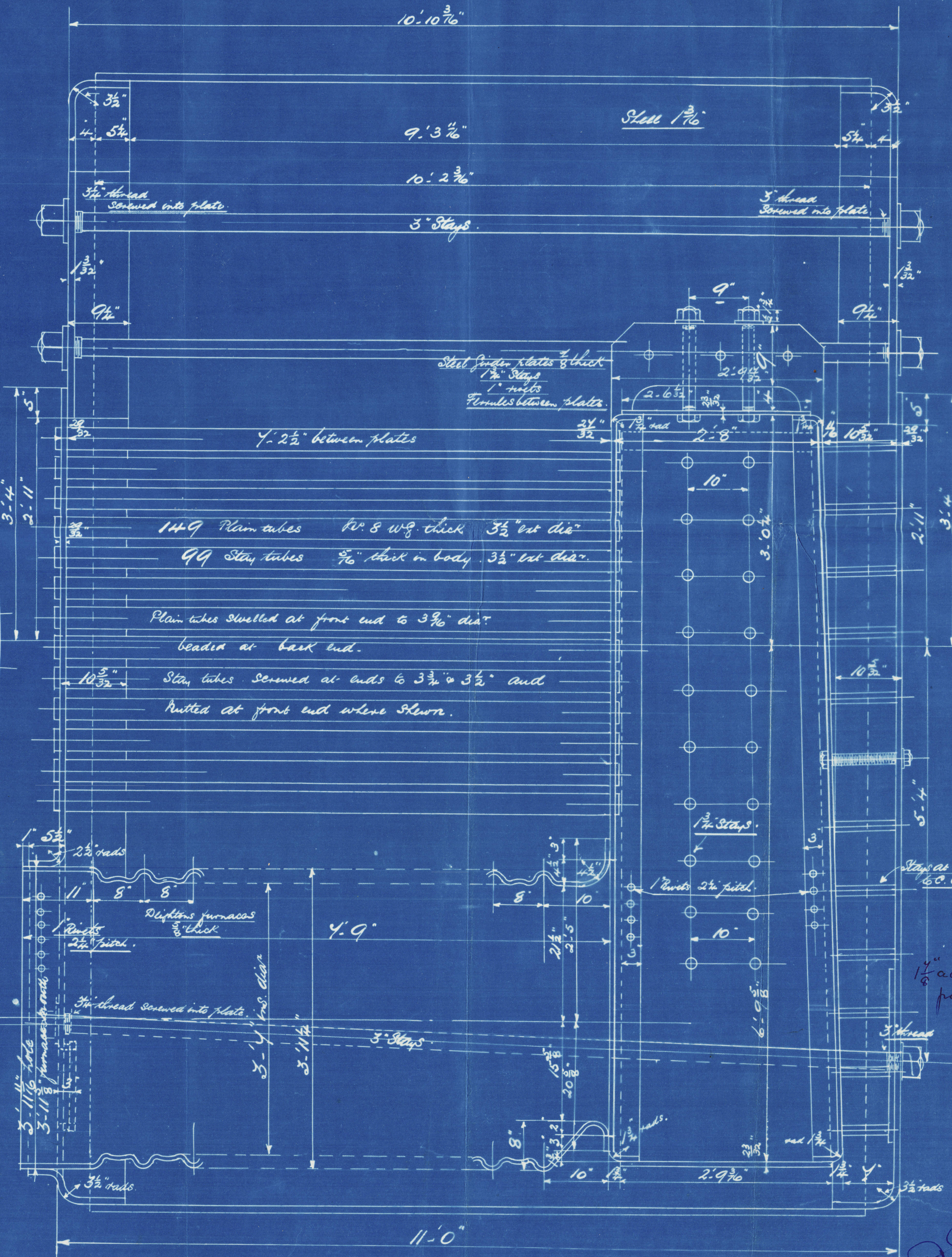
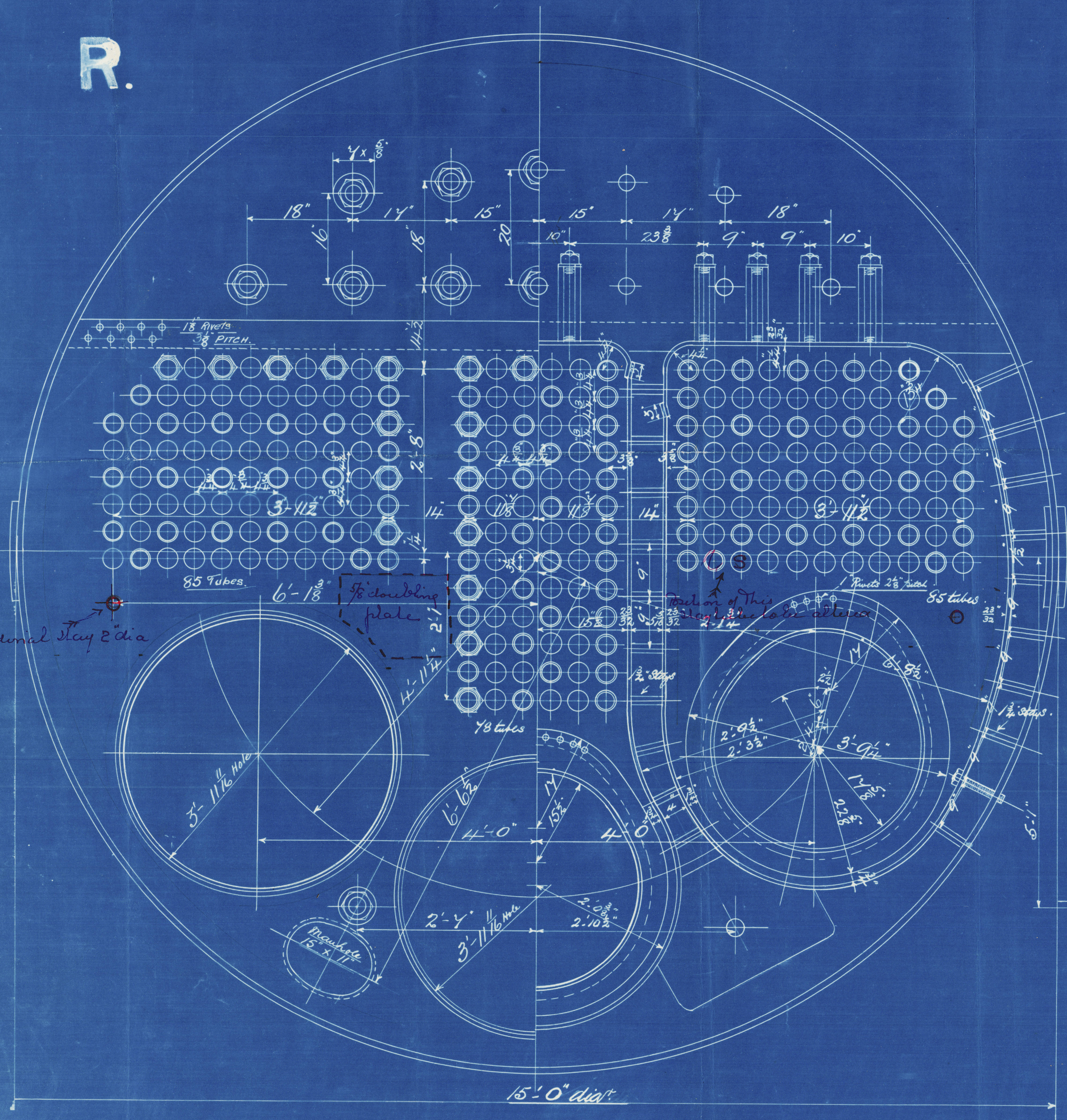


Note: The plates with stays of steel by the Siemens-Martin process  
 All rivets holes drilled through the boiler, close on shell  
 after the plates are bent  
 All flange plates to be annealed after the plates are bent  
 Stays are not to be welded Tubes are 9 ft. long  
 The tensile strength of the shell plates to be between 28 & 32 tons  
 per sq. in.  
 The combustion chamber stays are screwed into both plates  
 and fitted with a nut at each end except on outside of circular shell  
 washers on outside of shell only, none inside C.C.

Particulars of Staying

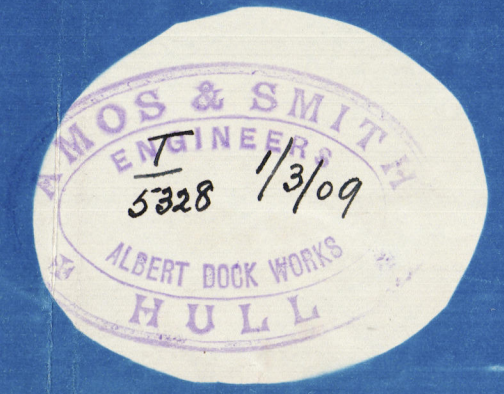
Stays	Dist.	No. of threads per inch	Area at bottom of thread
Steam Space Stays	3"	6	6.10 sq. in.
Bottom Stays	3"	6	6.10
Stay tubes	3 1/2"	9	2.36 sq. in.
C.C. Stays	1 1/2"	10	2.066
C.C. Stays	1 1/2"	10	2.394

R.



MOS & SMITH  
 ENGINEERS  
 ALBERT DOCK WORKS  
 HULL

J.P.P.R.  
 2-3-09  
 J.M.



TITLE Steel Boiler  
 FOR WHOM A.S.  
 DATE 2/2/09  
 ORDER No. 1608  
 IF MADE SCALE 1/4" = 1 foot  
 Lloyds Register  
 W888 0126 712

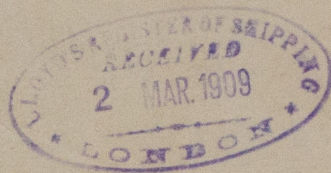
10233

STEEL BOILER N<sup>o</sup> 1608

Amos, Smith's No  
1608.

W. P. 180-lbs

s/s Elite  
Hull Report No. 21459



RETAIL



© 2020

Lloyd's Register  
Foundation

W888-0126 2/2

© 2020

From AMOS & SMITH, HULL.

Enclosure for

Lloyds Surveyors  
Hull

w888-0126 1/2