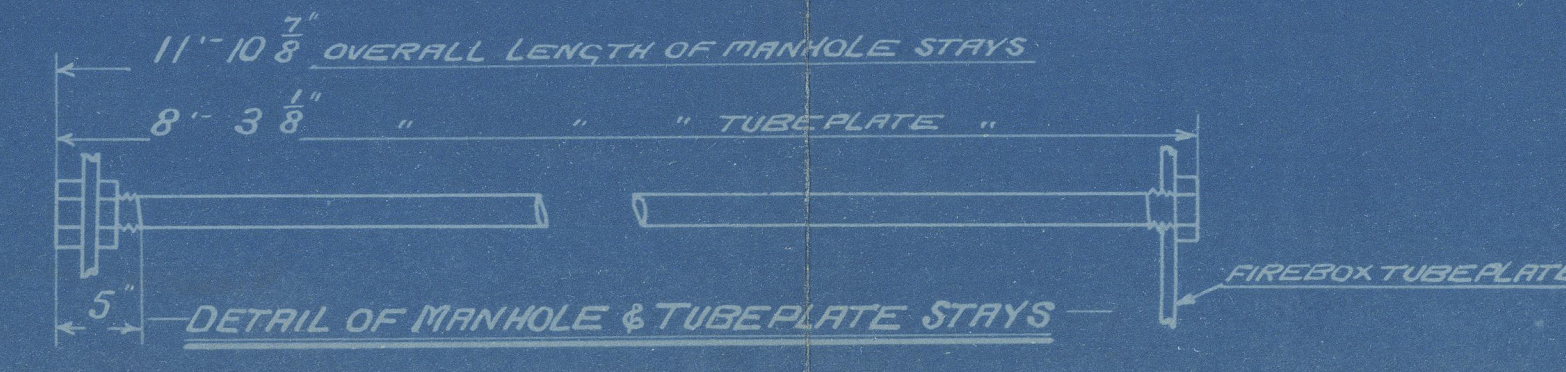
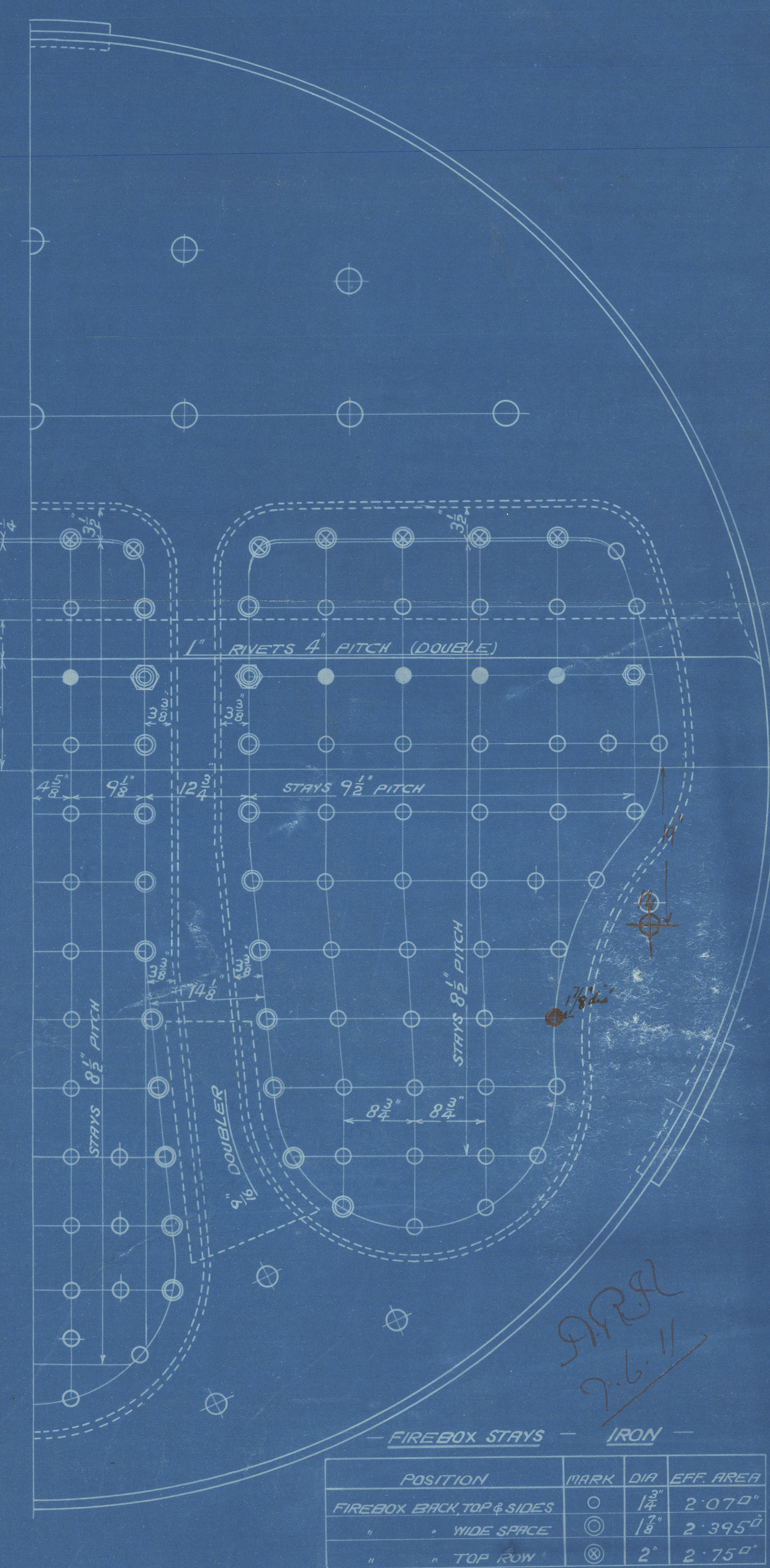
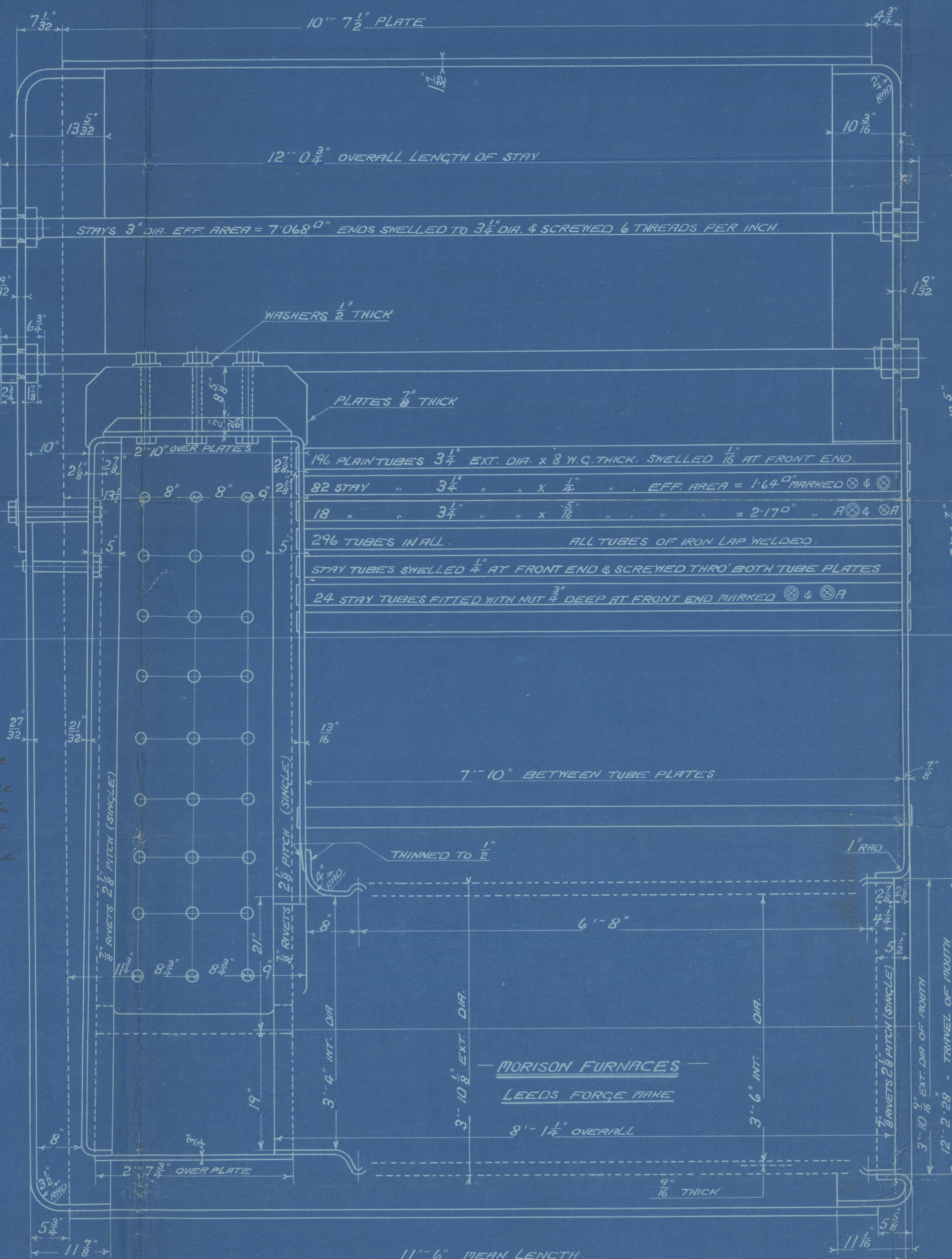
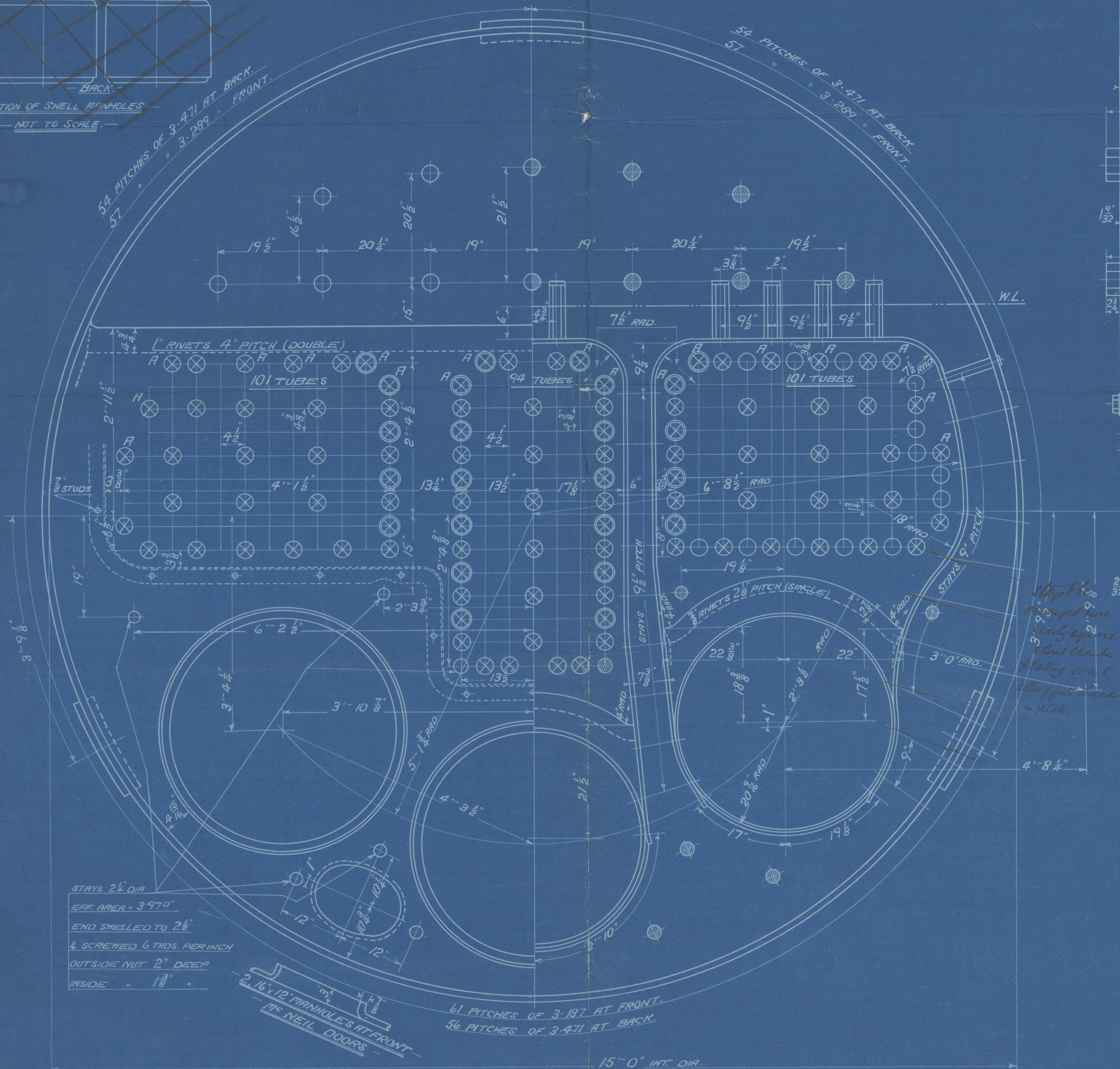
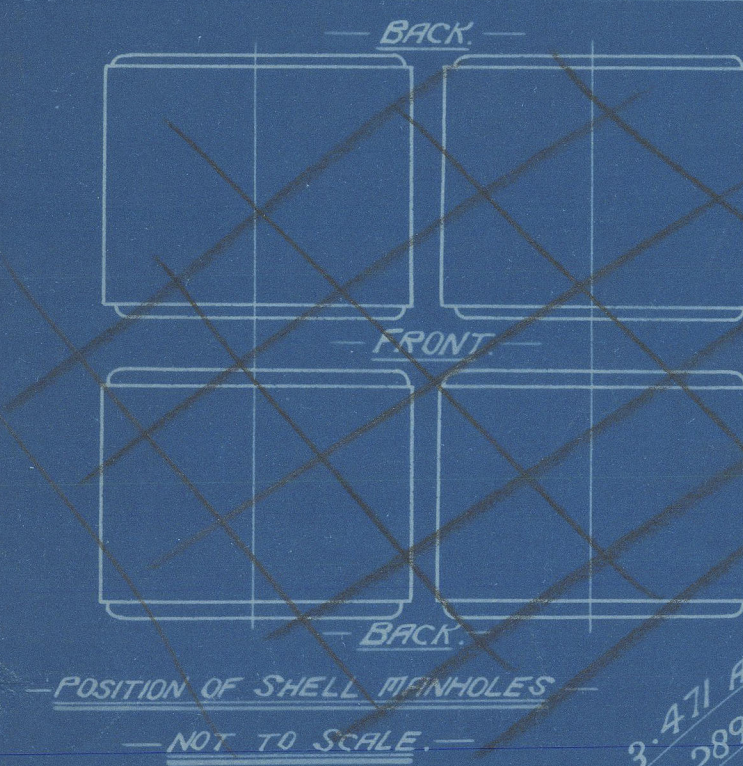
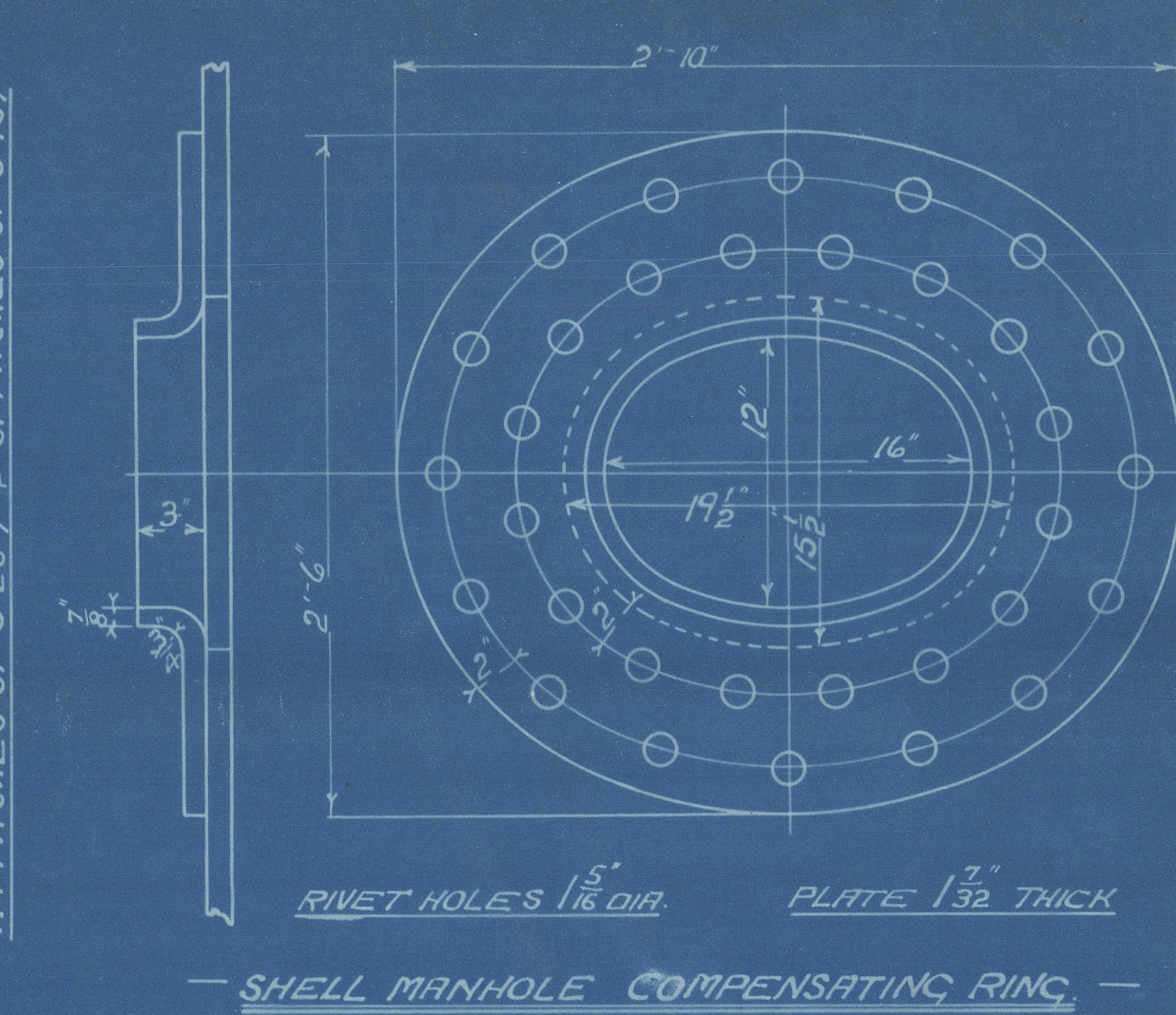
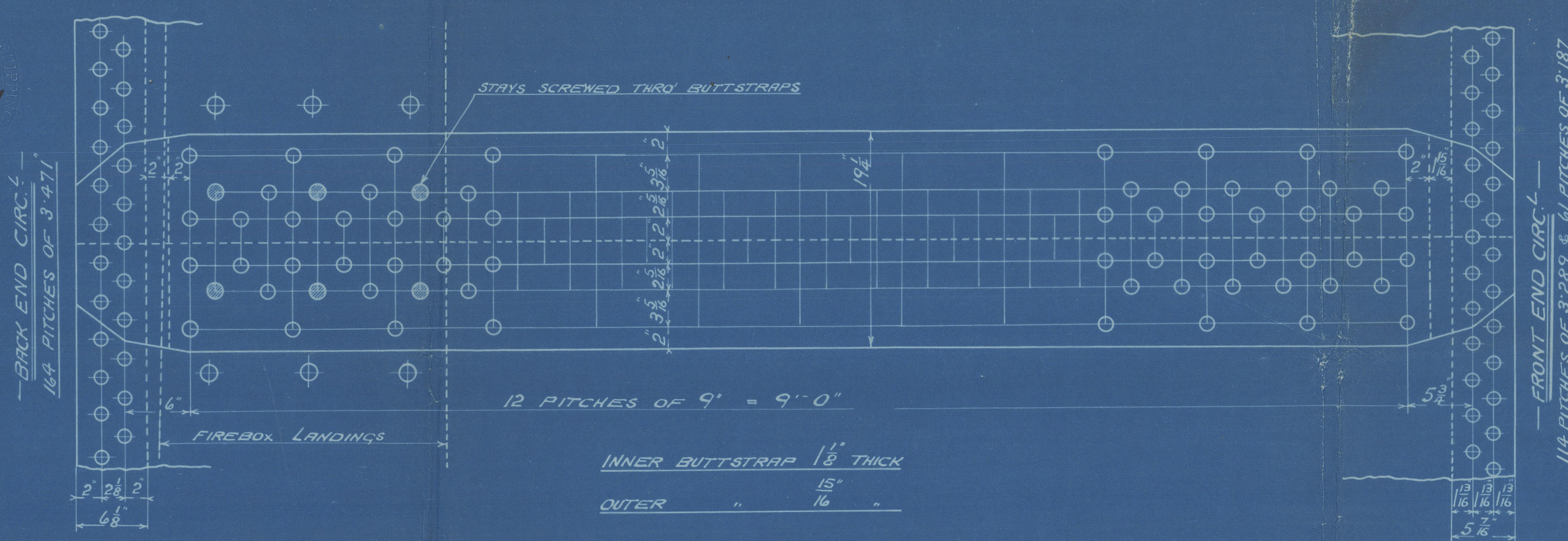


SURFACES		
TUBES	1972	7888
FIREBOX TOP & SIDES	150	600
BACK	78	312
TUBE PLATE	47	188
FURNACES	153	612
TOTAL HEATING SURFACE	2400	9600
GRATE AREA (5'0" BARS)	525	210
TUBE AREA	1325	53
WATER	153	612
STEAM SPACE	474	1896
GRATE AREA HEATING SURFACE		
TUBE		
AREA		
WATER		
STEAM SPACE		
% BOILER ABOVE FIREBOX	31.62	
WEIGHT OF WATER	24 1/2 TONS	97 TONS

RIVETING			
	LONG	BACK END	FRONT END
RIVET HOLE DIA	5/8	1 1/8	1 1/8
PITCH	9"	3.471	3.28 & 3.18
% PLATE	85.41	62.2	62.8
% RIVET	91.8	54.5	47.0

LIMITS OF TENSILE STRENGTH & MATERIAL		
SHELL BUTTSTRAPS & GIRDERS	28 TO 32 TONS	
OTHER PLATES	26 TO 30	SIEMENS MARTIN STEEL
FURNACES	26 TO 30	
MAIN STAYS	28 TO 32	
SCREWED STAYS	NOT TESTED	IRON
RIVET BARS	26 TO 30 TONS	SIEMENS MARTIN STEEL

ALL RIVET HOLES DRILLED IN PLACE.  
MAIN STAYS SHELLED AT ENDS BY  
HYDRAULIC PRESSURE & ANNEALED.



BOTTOM CIRCUMFERENTIAL FRONT END SEAM  
TO BE 'HORSED' UP TO LEVEL OF CENTRE OF  
CENTRE FURNACE.

MAIN BOILER  
4 OFF  
CON<sup>T</sup> N<sup>O</sup> 562

WORKING PRESSURE = 180 LBS PER SQ. INCH.  
TO PASS LLOYD'S SURVEY  
SCALES, 1" & 1 1/2" = ONE FOOT.

ALL STAYS SCREWED THRO' BOTH PLATES & NUT FITTED AT EACH END  
EXCEPT WHERE OTHERWISE STATED ON DRAWING.  
ALL STAYS THRO' SHELL & STAYS MARKED ● IN FIREBOX BACK TO  
PROJECT 1/2 THRO' OUTER PLATES & TO BE CHAIKED.  
ALL 1 1/2" NUTS 1" DEEP EXCEPT ON GIRDER TOPS WHERE THE OUTSIDE  
NUTS ARE 1 1/2" DEEP.  
ALL 1 1/2" NUTS 1 1/2" DEEP.  
ALL 2" NUTS 1 1/2" DEEP.

OT 14305B  
12-6235  
JUN 1911



From DAVID ROWAN & CO., GLASGOW,  
ENCLOSURE

FOR

*Messrs Lloyd's Register*

Foundation

W881-01911/2

SCREWED 6 TIDS. PER  
OUTSIDE NUT 2" DEEP

Rowan's.

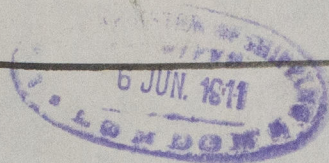
ROWAN



W681-0191

David Rowan & Co  
7.562

S/S 'Jacatta'  
Gls rpt no 31525-



RETAIN



© 2020

Lloyd's Register  
Foundation