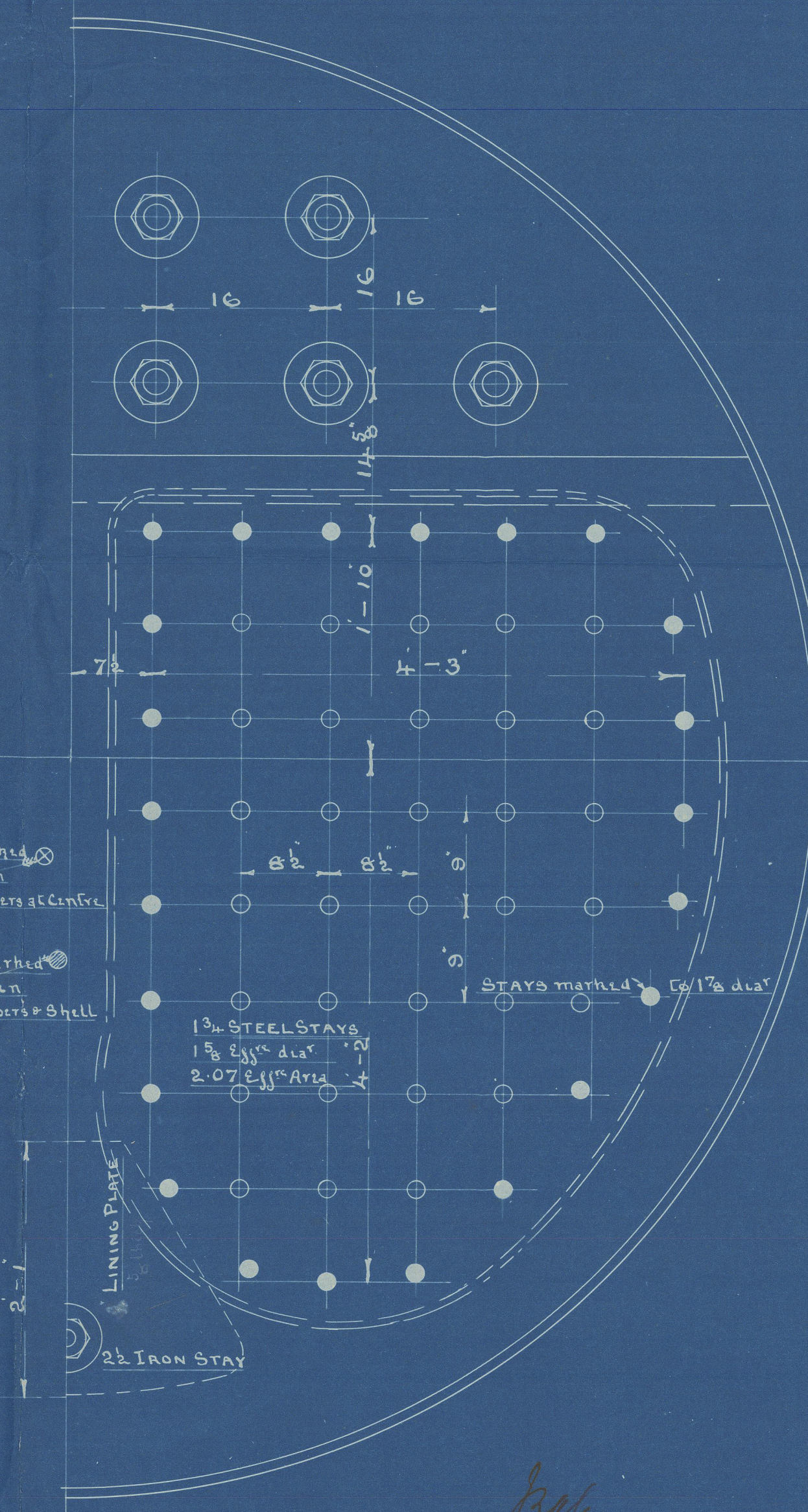
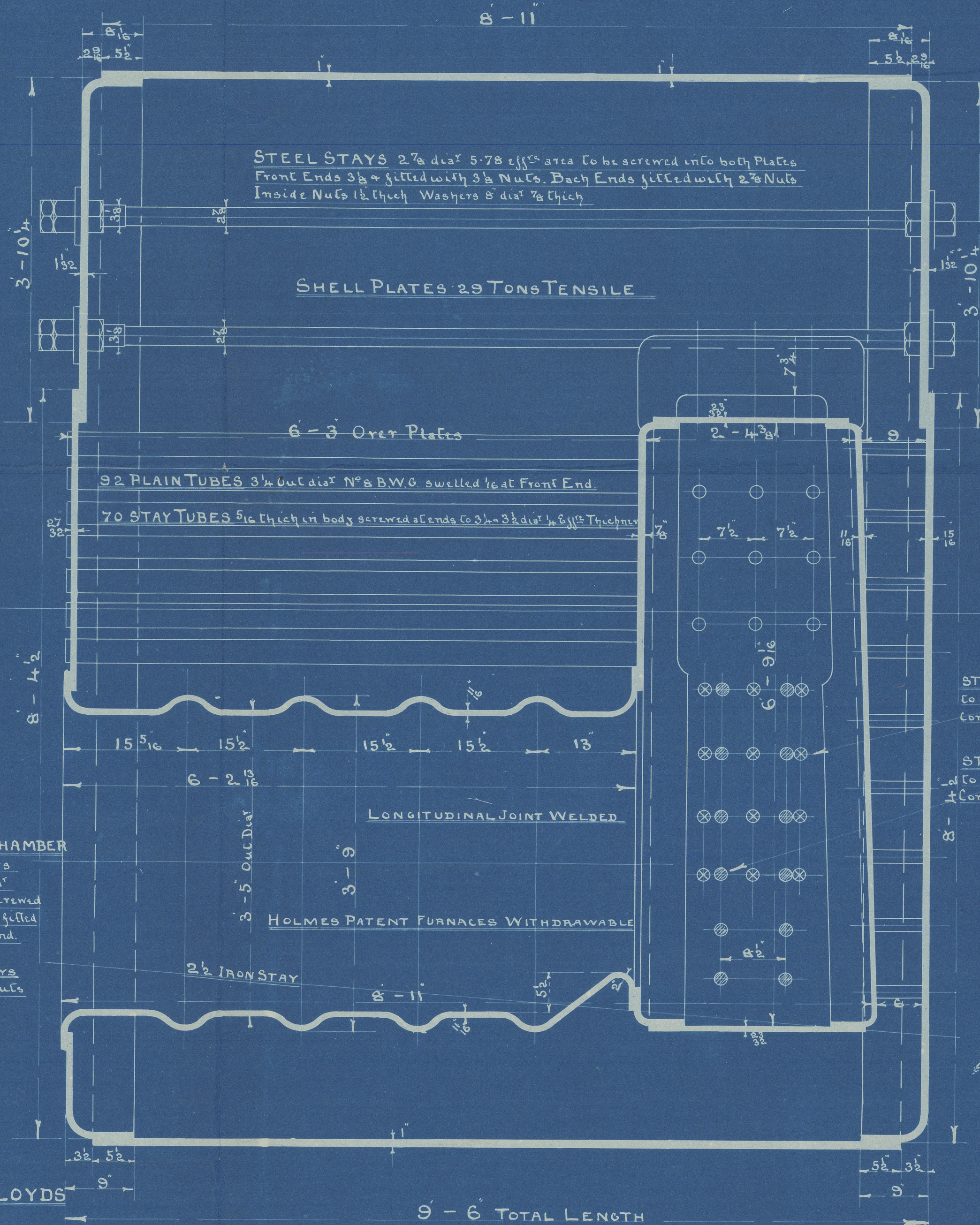
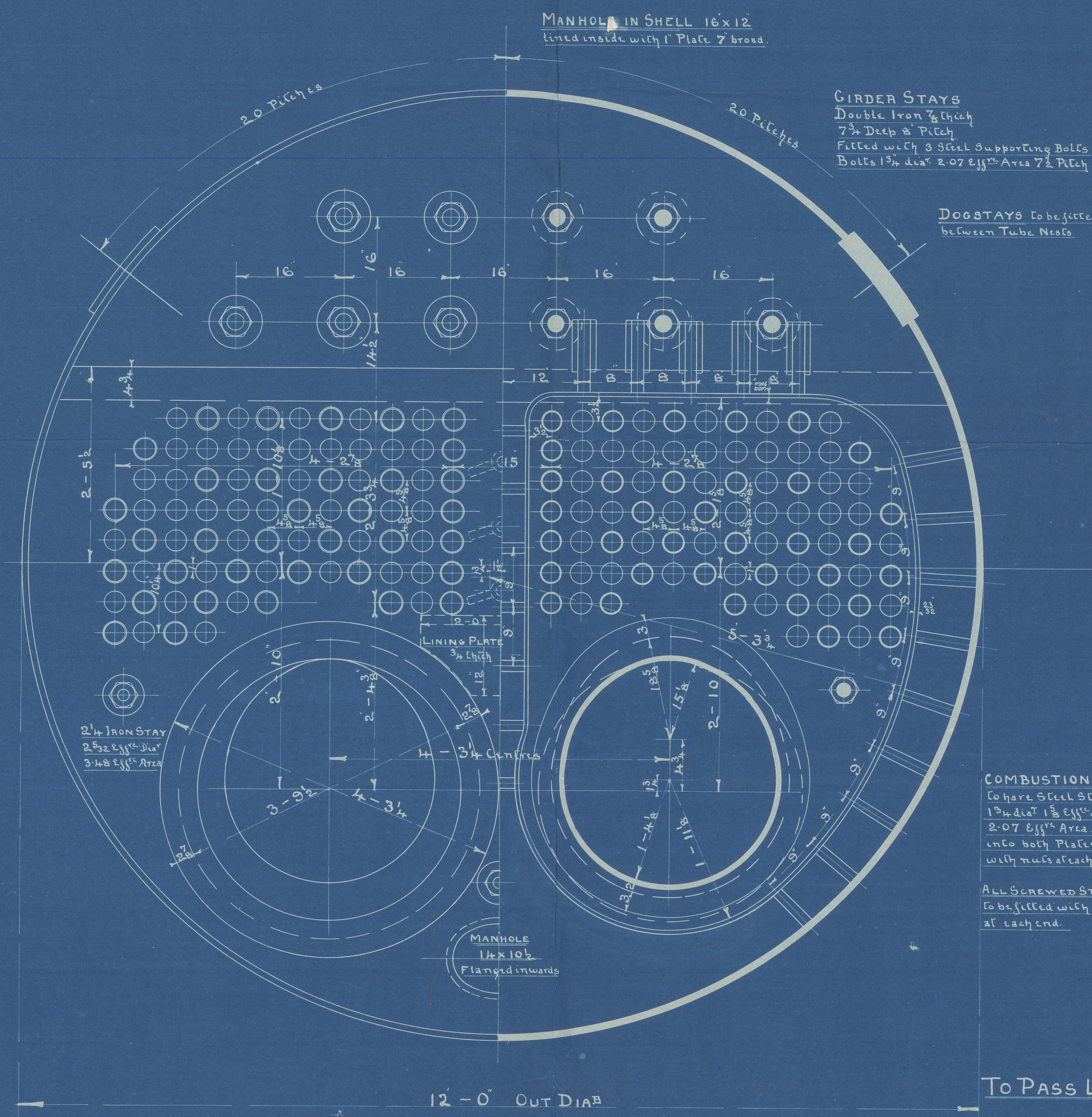
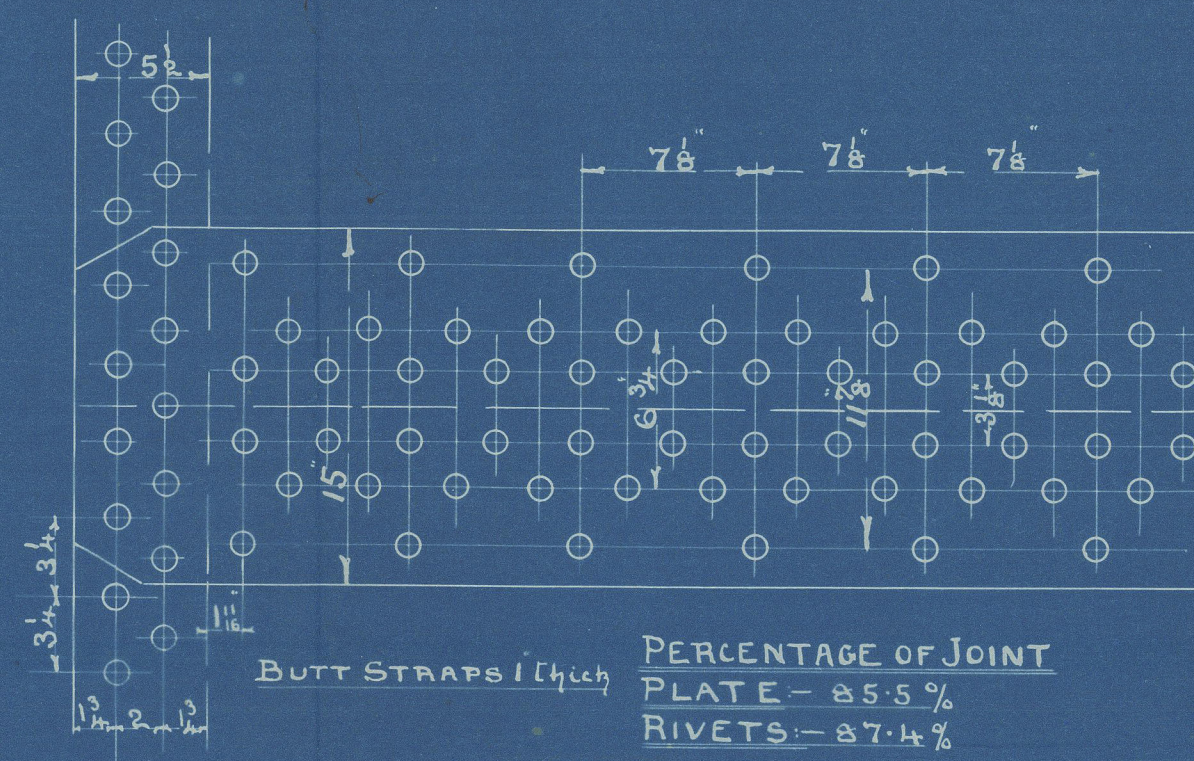


20:5:04

DIMENSIONS.

| | |
|-----------------------|---------|
| LENGTH OF FIRE BARS | |
| AREA OF FIRE GRATE | |
| DIAM OF TUBES OUTSIDE | 3 1/2 |
| LENGTH OF TUBES | 6-3 |
| Nº OF TUBES | 162 |
| SURFACE OF TUBES | \$ 860 |
| TOTAL HEATING SURFACE | \$ 1090 |
| WORKING PRESSURE | 180 |
| DIAM OF SAFETY VALVE | |

PARTICULARS OF RIVETING
SHELL:- Longitudinal joint to be double-Butt joint
 Triple riveted holes drilled 1/8 dia 7/8 Pitch
 Circumferential Seams to be Lap joint
 double riveted holes drilled 3/8 dia 3/4 Pitch
FURNACES Front & Back Ends to be single riveted
COMB CHAMBERS:- Bottom & Sides to level of Furnace
 Tops to be double riveted. Rest to be single riveted
END PLATES:- Cross Seams to be double riveted



STEEL BOILER Nº 734

CHARLES D. HOLMES & CO
 ENGINEERS & BOILER MAKERS
 HULL

734
 1915/16
 1916/17

REGISTERED
 LLOYD'S REGISTER
 OF SHIPPING

Sc. Tr. Japan.

Hull Report

N^o 16289.

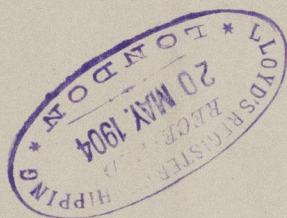
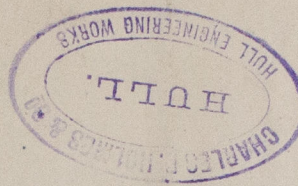
Charles & Holmes & Co.

- Blr No. 734 -

for Cochran & Son

- of No 327.

N.P. 18066



W881 - 0128

RETAIN



© 2020

Lloyd's Register
Foundation