

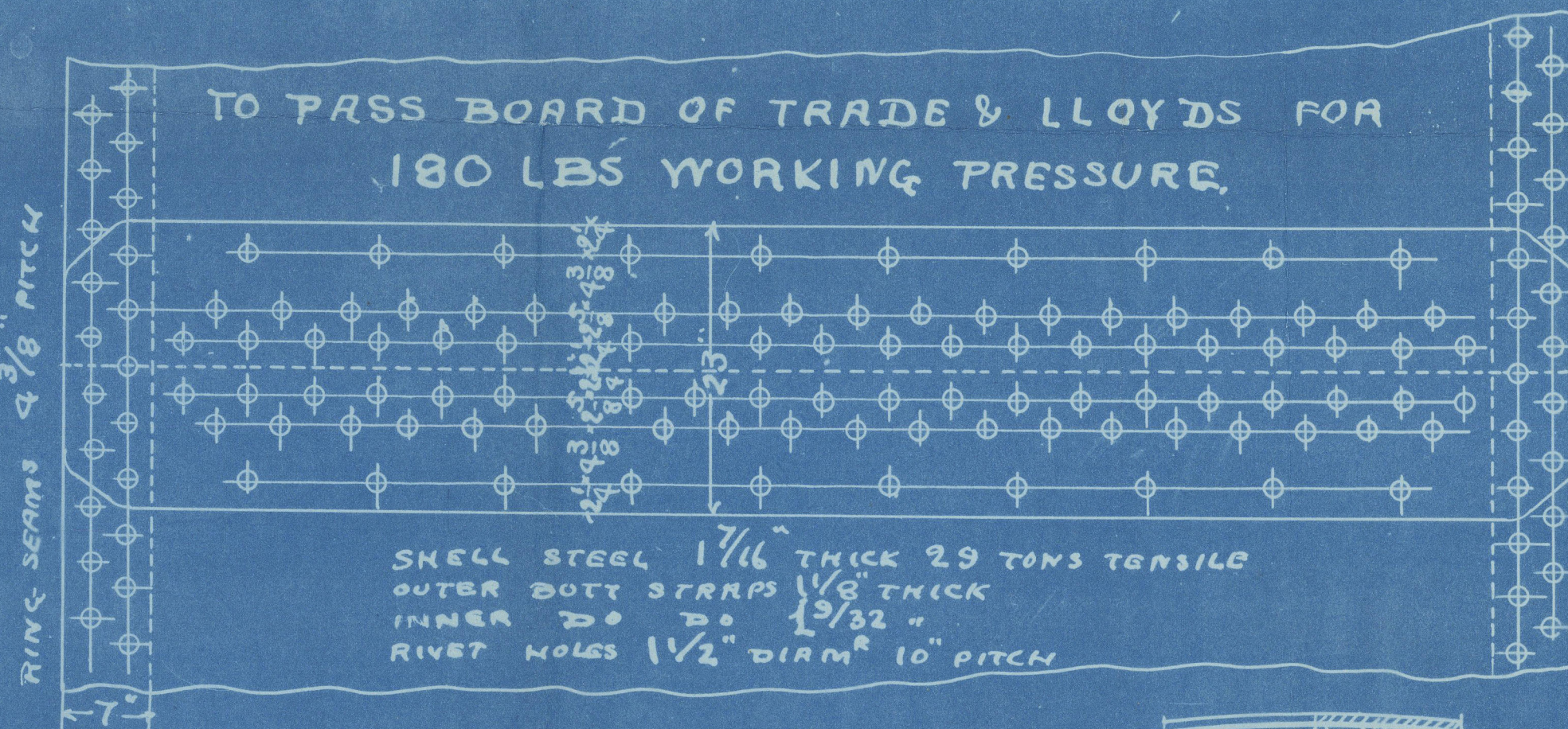
BOILER N° 308

FOR GRANGEMOUTH DOCKY³-COYS S S N° 254
SCALE 1" = 1 FOOT
ALL MATERIAL STEEL EXCEPT TUBES WHICH ARE IRON
RIVET HOLES DRILLED IN PLACE AFTER PLATES ARE BENT.

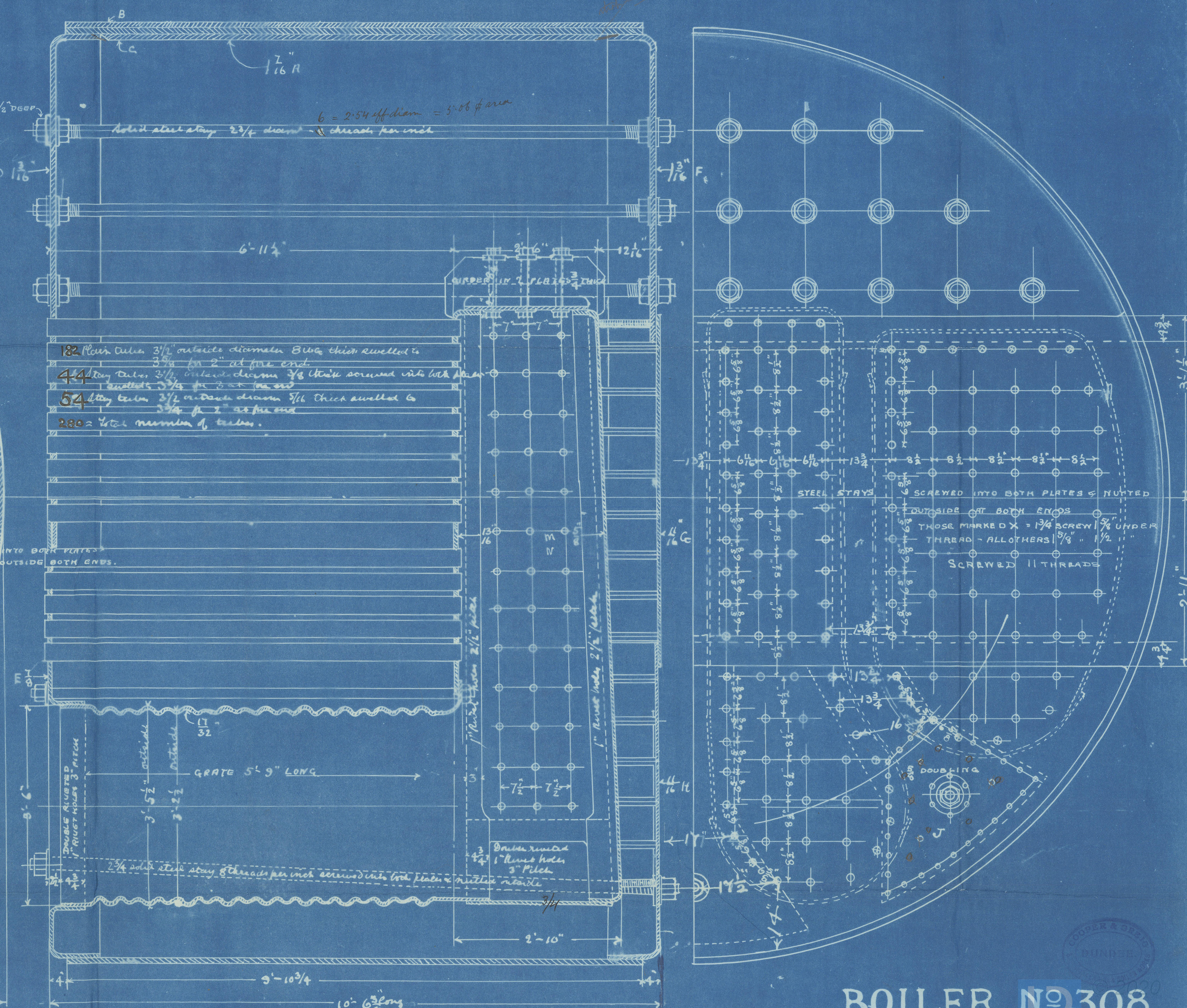
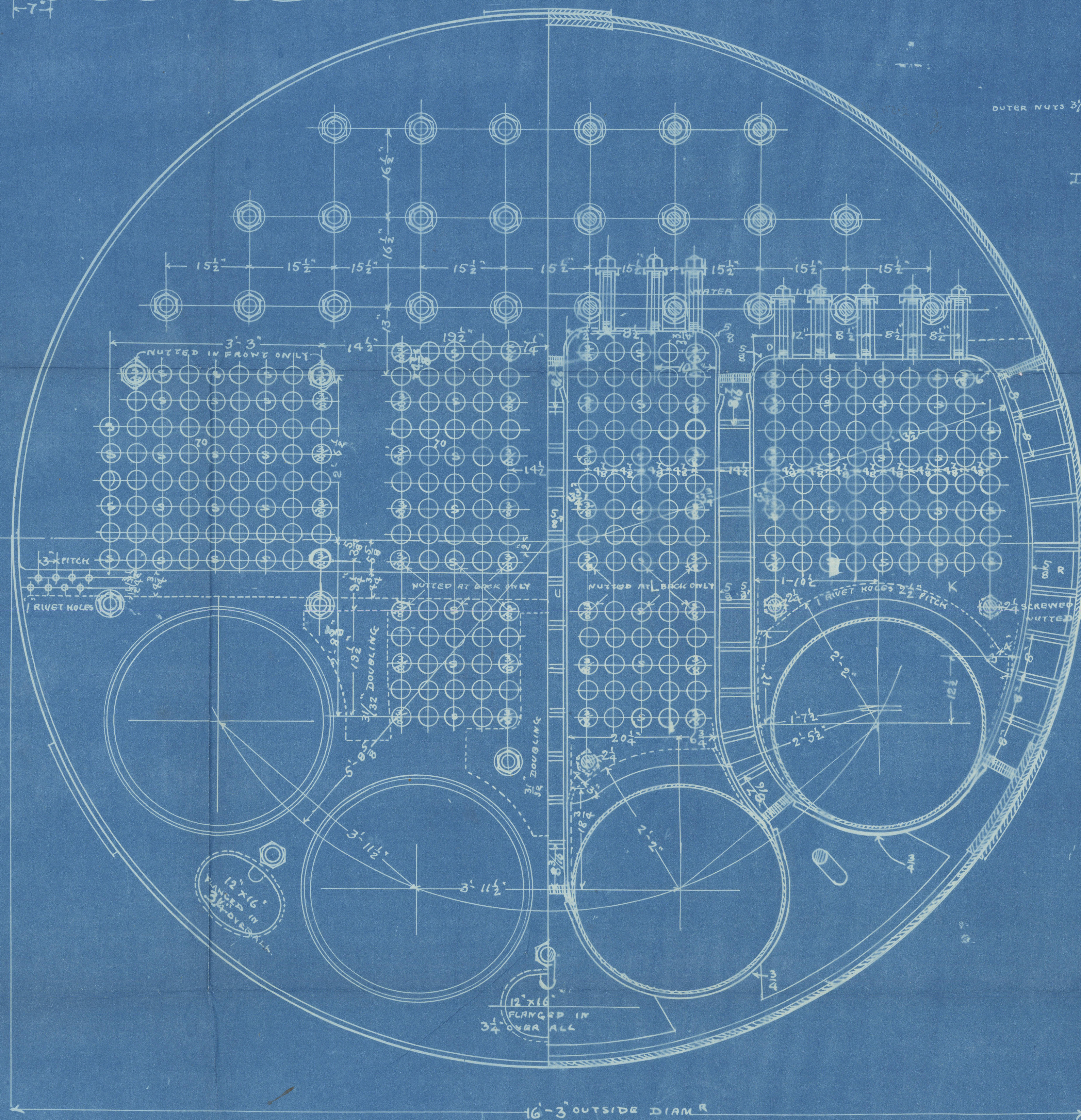
MARK	N°	LENGTH	BREADTH	THICK	DESCRIPTION	MARK	N°	LENGTH	BREADTH	THICK	DESCRIPTION
A	3	16'-11"	3'-11"	1/16	Shell piece	T	2	7'-3"	2'-5 1/2"	5/8	Center box wing ends
B	3	9'-11"	1'-11 1/2"	1/8	Outer Keel straps	U	2	8'-3"	2'-5 1/2"	5/8	Center box end braces
C	3	9'-0"	1'-11 1/2"	1/32	Inner do do	W	2	3'-5"	2'-4 3/4"	3/4	Wing box bottoms
D	1	To sketch		3/16	Front end top	X	2	6'-6"	2'-5 1/2"	3/4	Center box bottoms
E	1	"	"	7/8	" bottom	Y	1	3'-7"	4'-6"	5/8	Doubling
F	1	"	"	13/16	Back end top	Z	32	2'-9"	1'-1"	3/4	Fire box girders
G	1	"	"	11/16	" center top	aa	24	11'-1 1/2"	2 1/2" diam		Steam stays
H	1	"	"	11/16	" bottom	bb	3	11'-3"	2 1/4" diam		Water "
I	2	2'-0"	4'-3"	3/32	Front doubling	cc	6	7'-6"	2 1/4" diam		"
K	2	5'-3"	4'-11"	13/16	Wing box side plates	dd		65'-0"	1 3/4" diam		"
L	2	7'-8"	3'-1"	13/16	Center box side plates	ee		100'-0"	1 3/8" diam		do do
M	2	8'-1 1/2"	5'-0"	5/8	Wing box backs						
N	1	11'-1"	4'-3"	5/8	Center box backs						
O	2	6'-0"	2'-2"	5/8	Wing box tops						
P	2	5'-3"	2'-2"	5/8	Center box tops						
Q	2	6'-0"	2'-4 3/4"	5/8	Wing box wing ends						
R	2	7'-0"	2'-4 3/4"	5/8	Center box wing ends						
S	1	4'-9"	3'-9"	5/8	Back end doubling						
T	1	3'-0"	11'-2"	5/8	"						
U	1	3'-6"	2'-6"	5/32	Front "						

16" X 12" M'NBLS DOOR COMPENSATION
PLACED TO SUIT SHIP.

Surface	sq. ft.
270 Tubes	1758
4 Fireboxes	300.8
4 Furnaces	150
1 Iron tube plate	88.7
Total heating surface	2297.3
Water surface	14.5
Grate surface	74.75
Area of tubes	14.4
area of tubes grate surface	19.2

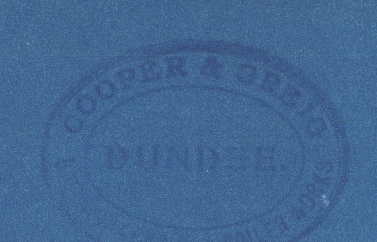


SHELL STEEL 1 1/16" THICK 29 TONS TENSILE
OUTER BUTT STRAPS 1 1/8" THICK
INNER DO 1 3/32"
RIVET HOLES 1 1/2" DIAM 10" PITCH



BOILER N° 308

22-12-03



Amended plan

Thos Cooper & Grey

Main Boiler No. 308
for

Grangemouth & Greenock Sh. Co.
S. No. 254

S. Mainmaxa 1076

Boiler as Built -

7110-188M

RETAIN



© 2020

Lloyd's Register
Foundation