



Lloyd's Register of British & Foreign Shipping,

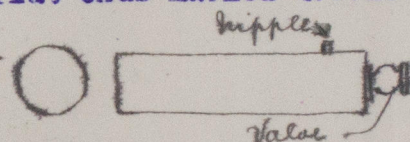
201, Tower Building,

Liverpool,

20th May 1914.

Sir.

Three cast steel cylinders with flat ends marked 490.13.
4-8" long by 9" outside dia, as per sketch -



intended for air containers, have been forwarded from Stockholm with 2 sets of Bolinder Oil engines for the "KINGSHOLME" No. 355, built by Abdela & Mitchell & Co Queensferry.

As these cylinders are not mentioned on Stockholm report No.1243 as part of the approved installation, I should be glad to know whether they have been approved and tested, and if not, whether they will meet with approval and what requirements must be fulfilled for the proposed maximum working pressure of 150 lbs.

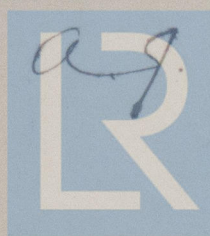
The thickness is not ascertainable without drilling and the uniformity of thickness is difficult to ascertain.

I am, Sir.

Your obedient Servant.

R.Williamson Esq.,

LIVERPOOL.



A. J. Bassett.

Lloyd's Register
Foundation

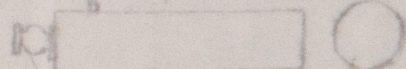
W872-0104

20th May 1914.

Sir.

Three cast steel cylinders with flat ends marked 430.13.

4-8 long by 9" outside dia, as per sketch



intended for air containers, have been forwarded from Stockholm

with 2 sets of Bolinder Oil engines 1 of the "KINGSHOLM" No.

355, built by Abdala & Mitchell & Co. Gnestery.

As these cylinders are not mentioned on Stockholm report

No. 1343 as part of the approved installation, I should be glad

to know whether they have been approved and tested, and if not,

whether they will meet with approval and what requirements must be

fulfilled for the proposed maximum working pressure of 150 lbs.

The thickness is not ascertainable without drilling and

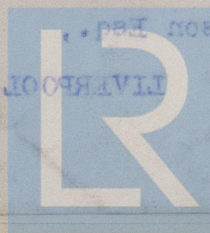
the uniformity of thickness is difficult to ascertain.

I am, Sir,

Your obedient servant.

on 20

W. J. B. Smith



© 2021

Lloyd's Register
Foundation