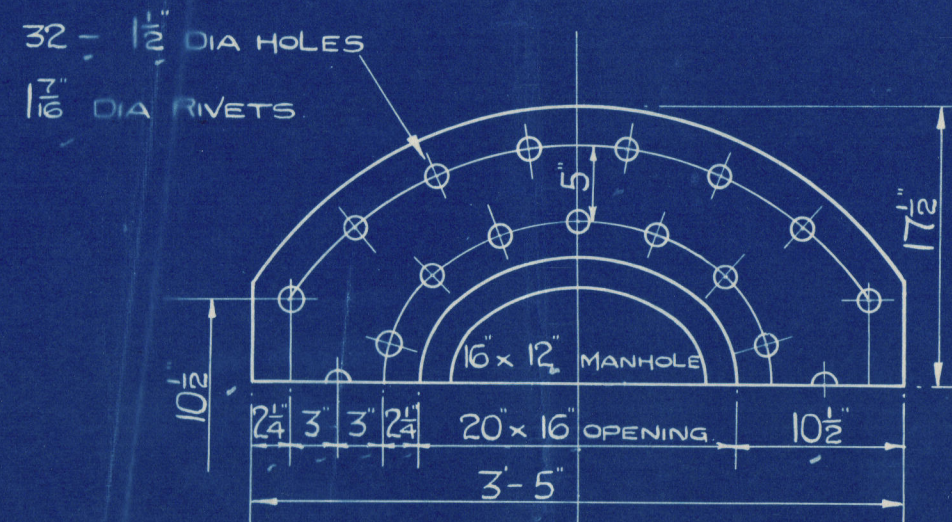


TENSILE STRENGTH OF MATERIAL

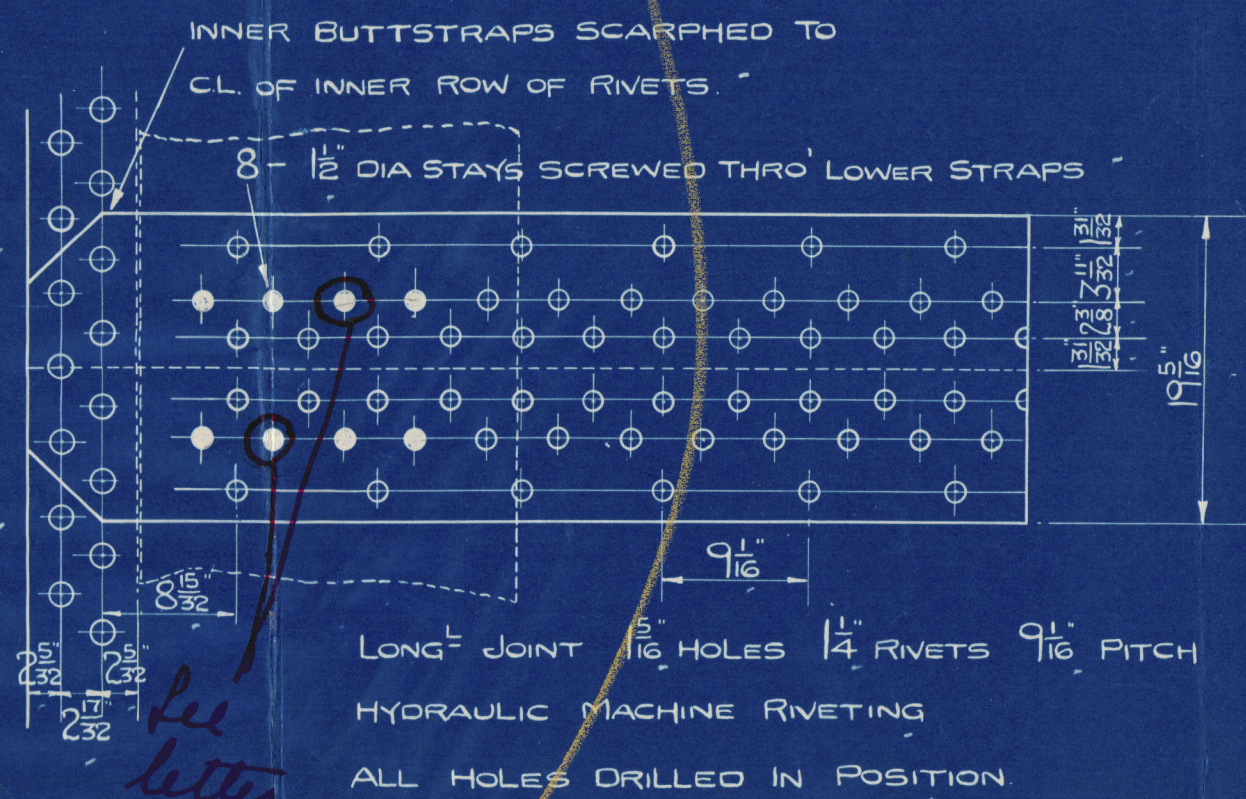
CYL. SHELL PLATES & BUTTSTRAPS	=	30 TO 34 TONS / O"
GIRDER PLATES	=	28 TO 32 TONS / O"
MANHOLE DOUBLING	=	27 TO 30 TONS / O"
ALL OTHER PLATES & FURNACES	=	26 TO 30 TONS / O"
LONGITUDINAL STEEL STAYS	=	28 TO 32 TONS / O"
SCREWED STAY & RIVET BARS	=	26 TO 30 TONS / O"

ALL PLATES OF STEEL	WORKING PRESSURE = 210 LBS / O"
ALL STAYS OF STEEL	TEST PRESSURE = 365 LBS / O"
ALL RIVETS OF STEEL	
ALL TUBES OF STEEL	



POSITION OF MANHOLE & HANDING OF BUTTSTRAPS FIXED LATER

CIR JOINT 1 1/8 HOLES 18 RIVETS 4-678 PITCH (14 PITCHES) PLATE 67-27% RIVET 42-55%

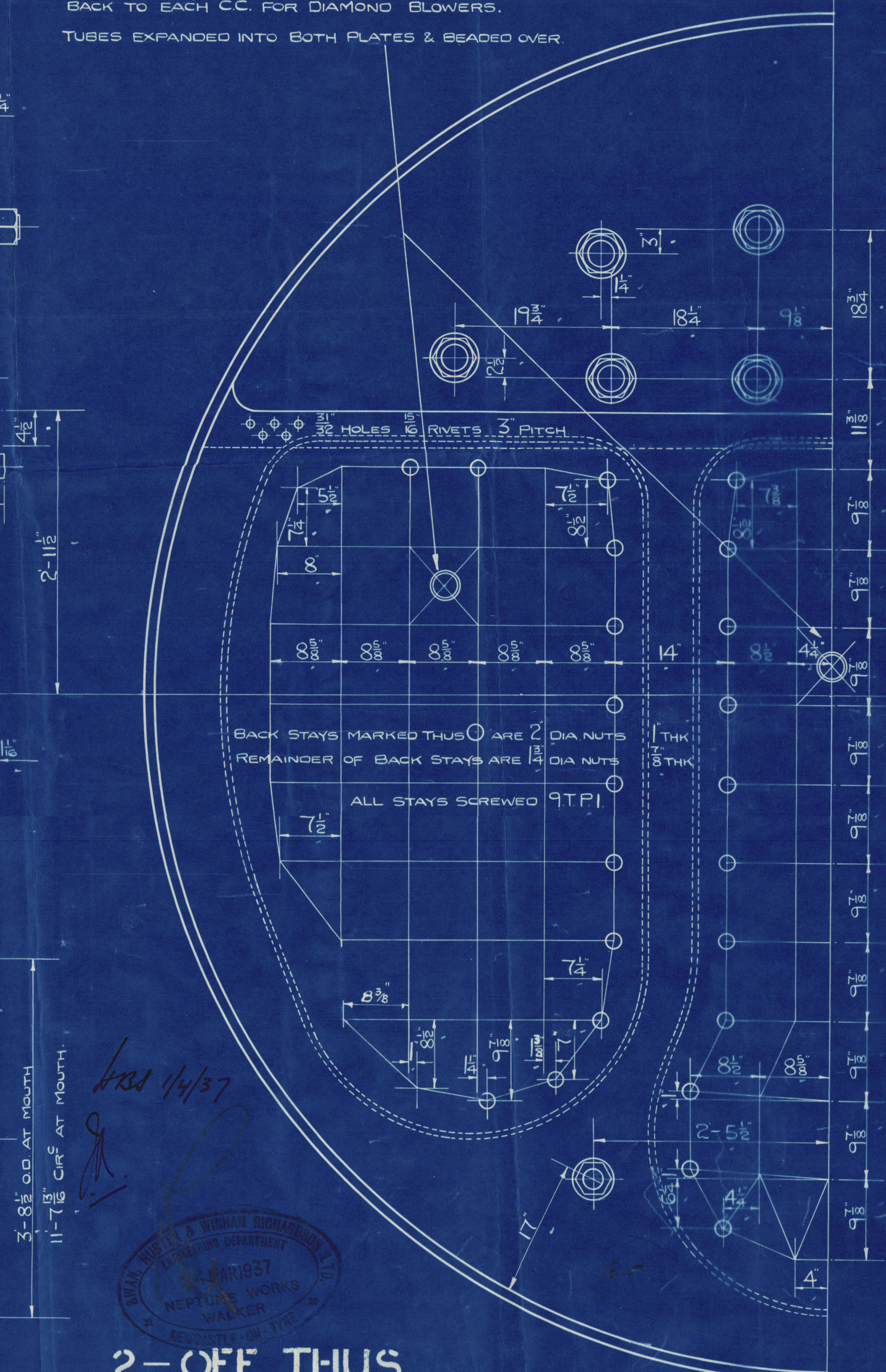
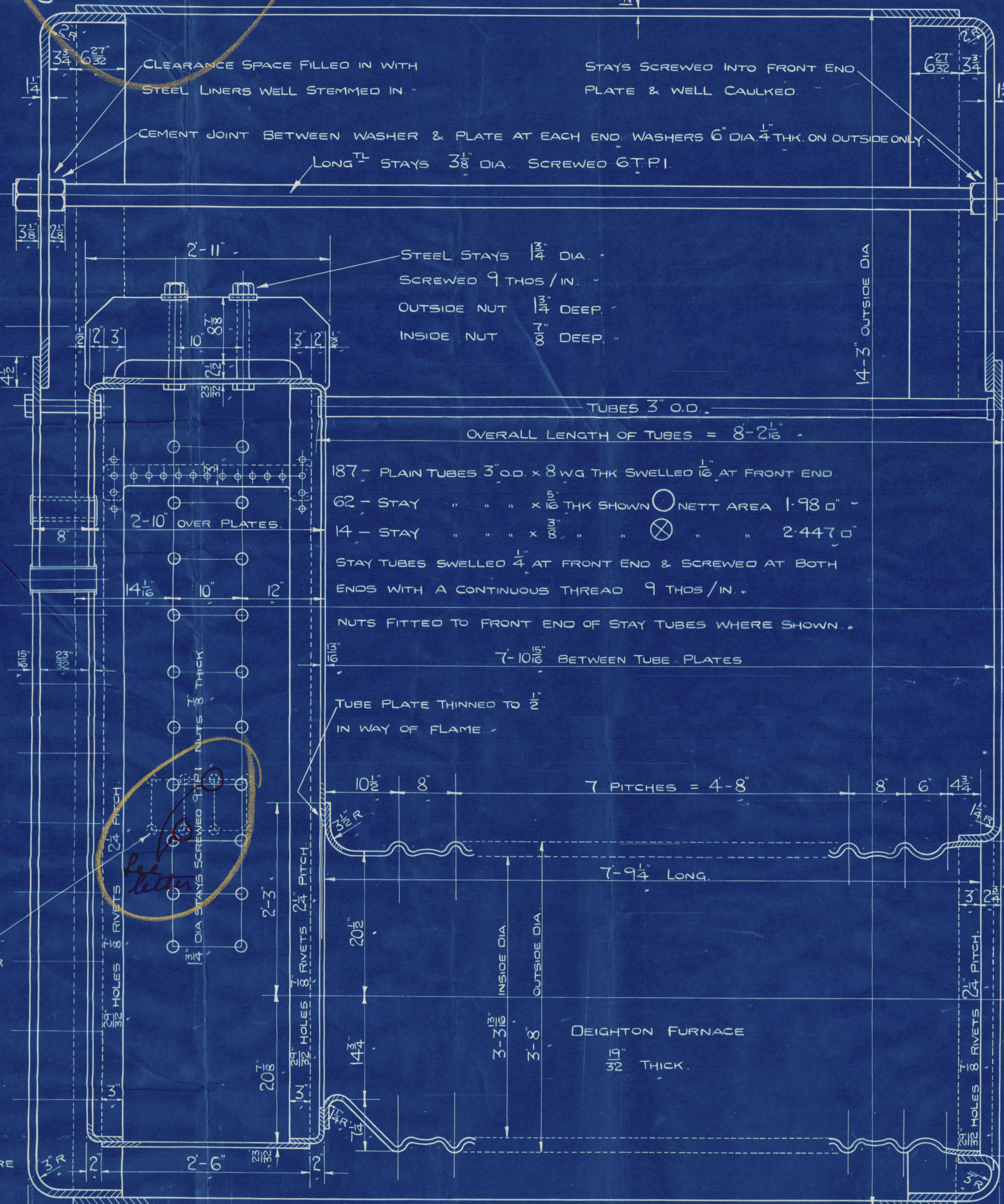
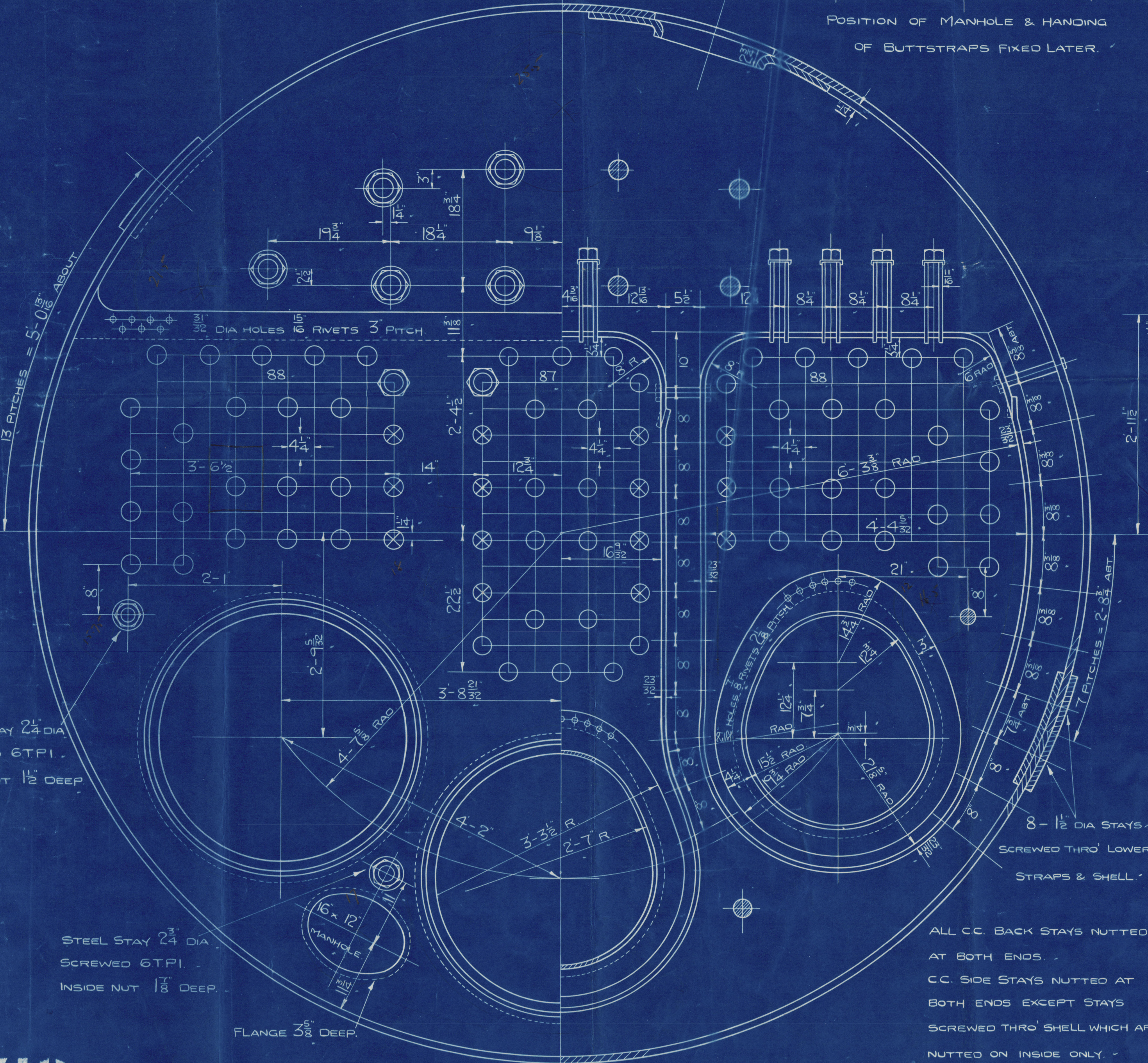


OUTER BUTTSTRAP	=	3/32 THICK
INNER BUTTSTRAP	=	1/32 THICK
PLATE	=	85.51%
RIVET	=	85.84%
COMBINED	=	88.19%

TOTAL HEATING SURFACE (2 BOILERS) = 115 1/2
TOTAL GRATE SURFACE (2 BOILERS) = 115 1/2
FIREBARS 5-8' LONG

To LLOYDS SURVEY.

32 O.D. x 1/4 THICK BOILER TUBE THRO' BOILER BACK TO EACH C.C. FOR DIAMOND BLOWERS. TUBES EXPANDED INTO BOTH PLATES & BEADED OVER



STEEL STAY 2 1/4 DIA. SCREWED 6 T.P.I. INSIDE NUT 1 1/2 DEEP

STEEL STAY 2 3/4 DIA. SCREWED 6 T.P.I. INSIDE NUT 1 3/8 DEEP

FLANGE 3 5/8 DEEP

4 P.C. WB HW

14-7-011

ALL C.C. BACK STAYS NUTTED AT BOTH ENDS
C.C. SIDE STAYS NUTTED AT BOTH ENDS EXCEPT STAYS SCREWED THRO' SHELL WHICH ARE NUTTED ON INSIDE ONLY
WASHERS FITTED UNDER NUTS WHERE NECESSARY

2-OFF THUS
MAIN BOILERS

SCALE - 1" = 1 FOOT

15801582

Nos	DATE
25.8.33	

SWAN, HUNTER, & WIGHAM
RICHARDSON LTD.

ENGINE No. 1580-82

342

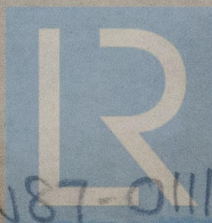
Main Boilers

Tasso
Voho.

London

(3)

Copy



Lloyd's Register
Foundation