

= NORTHUMBERLAND ENGINE WORKS. =

= TRACING L 81. =

= SCHEDULE L =

= STEAM BOILER =

= SCALE 1 INCH = ONE FOOT. =

12/3/09



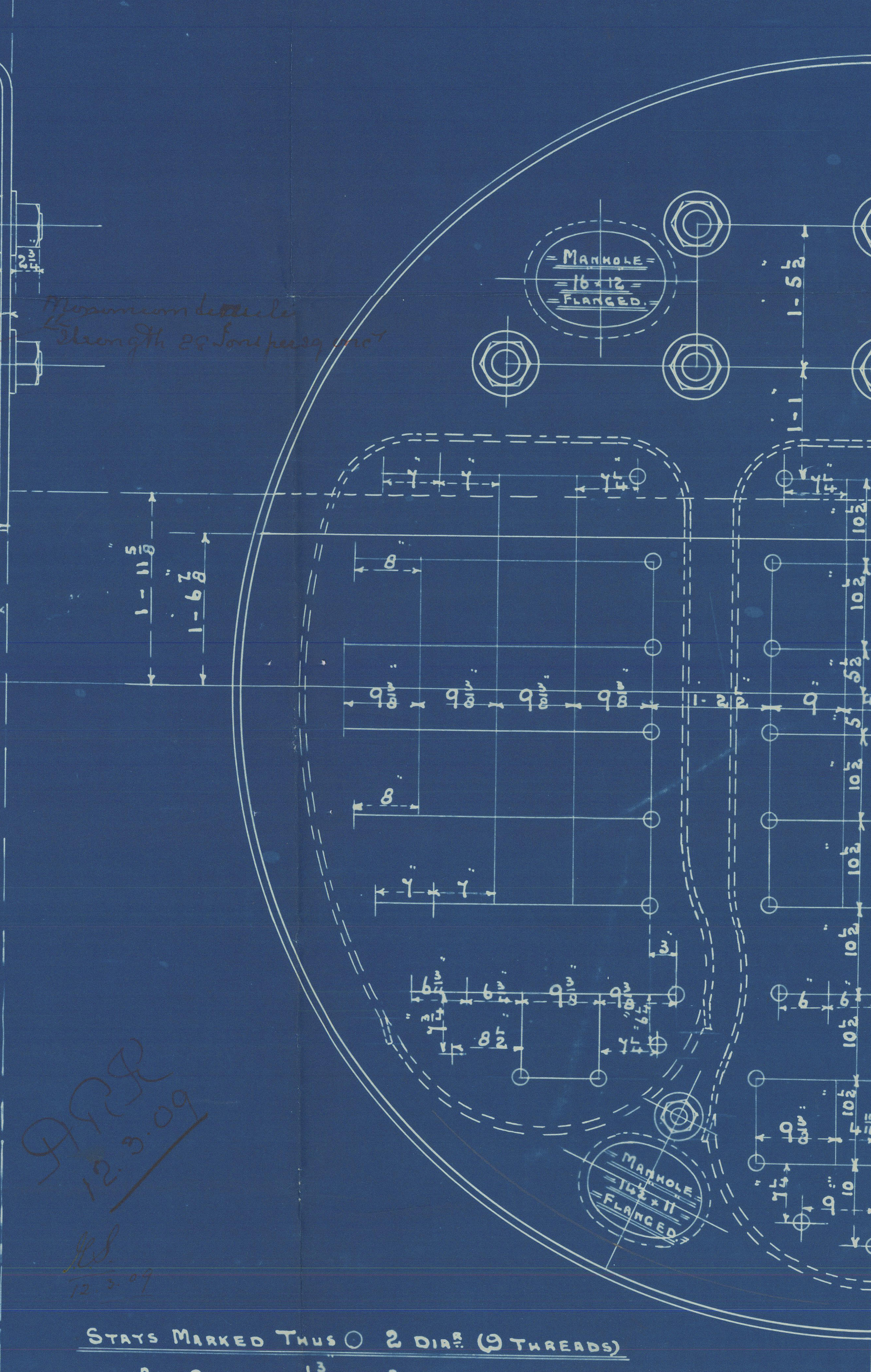
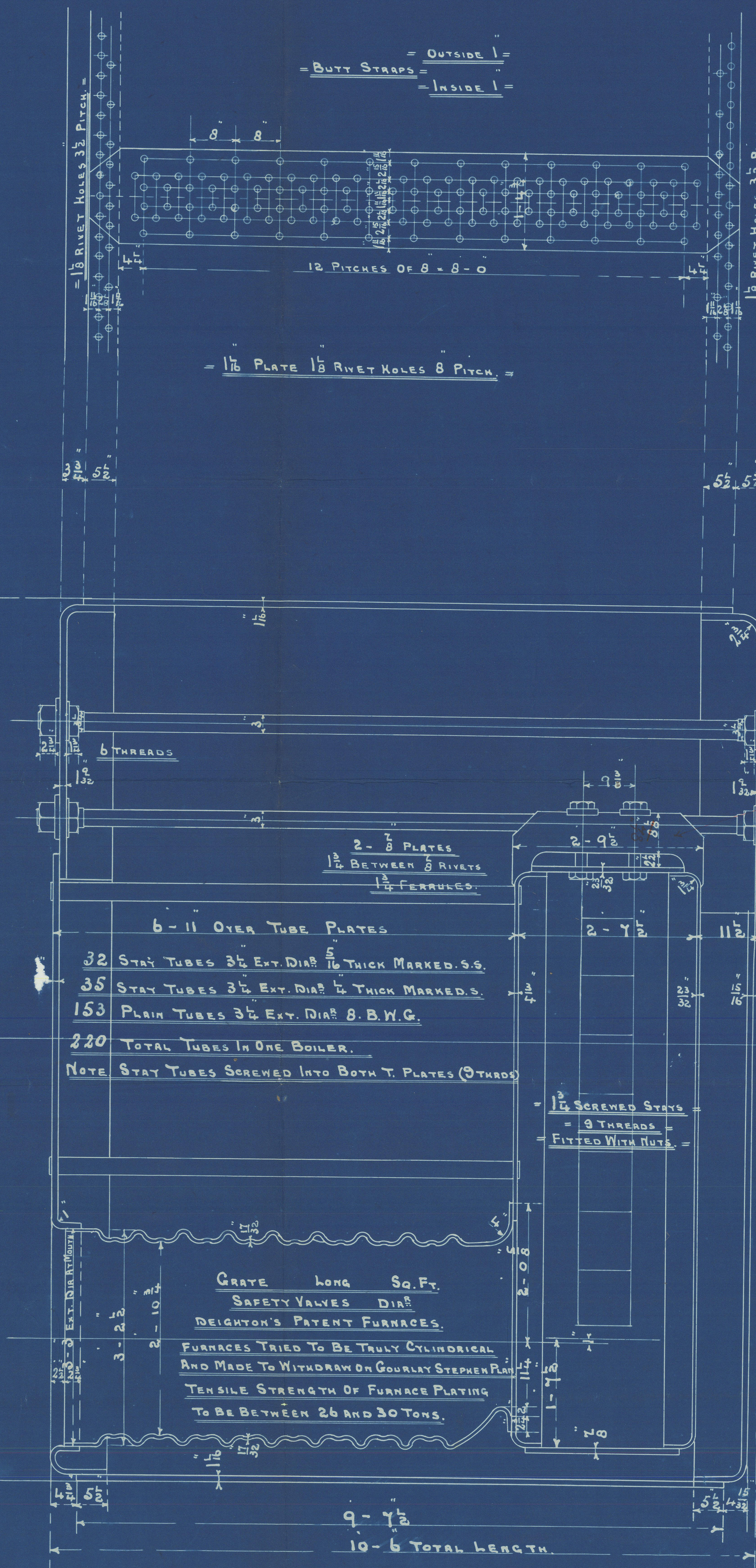
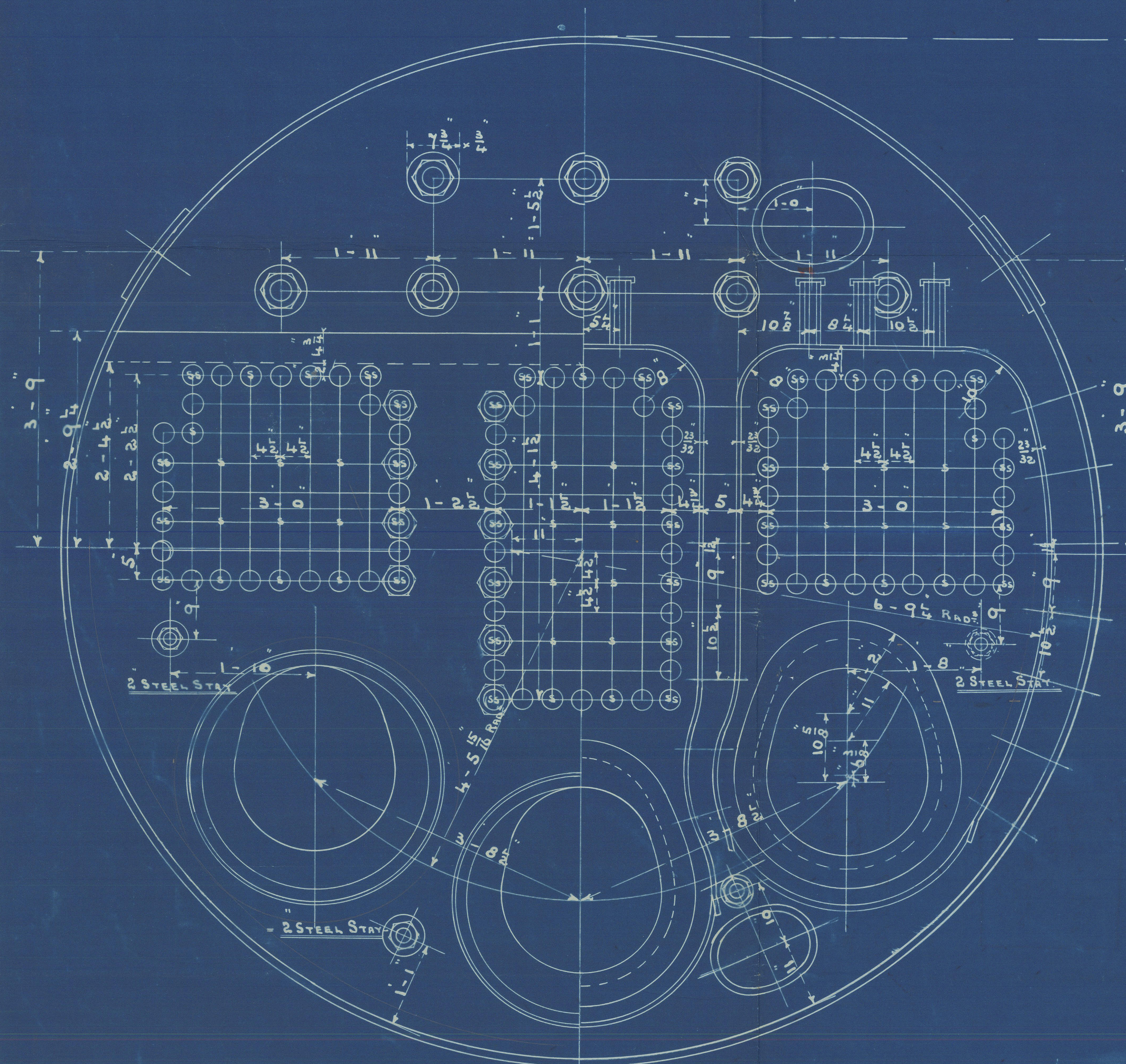
= WORKING PRESSURE = 180 LBS. =

= TEST PRESSURE = 360 " " =

NOTE ALL PLATES STAYS 9/8 TO BE OF STEEL EXCEPT SMOKE TUBES WHICH ARE OF IRON.

TENSILE STRENGTH OF SHELL PLATING TO BE NOT LESS THAN 28 3/4 TONS PER SQUARE INCH.

ALL HOLES DRILLED IN PLACE AFTER PLATES ARE BENT.



STAYS MARKED THUS O 2 DIA. (9 THREADS)

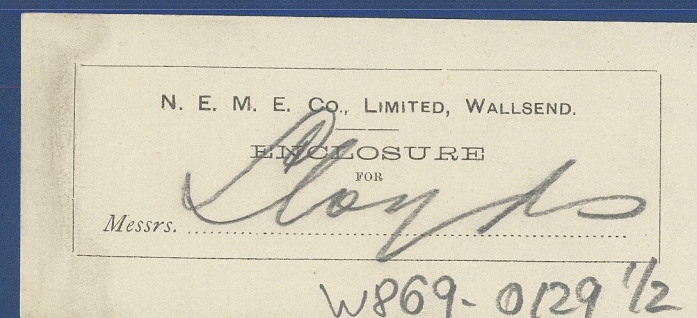
ALL OTHERS 1 1/4 DIA. (9 THREADS)

NOTE. ALL STAYS SCREWED INTO PLATE AND FITTED WITH NUTS.

= 1. THUS. =

= 1. OPPOSITE HAND =

= CONTRACT 1888 =



W869-0129 1/2

W869-0129 1/2

N. E. Maine Eng Co Ltd
Contract No. 1888
Two main boilers 180 lbs
for Wood Skinnier & Co S/S 161



No 7867
Lloyds Int-
Boilers
amt. 5/7/09.

St. Belgique

Newcastle-on-Tyne.

Report No 57376

RETAIN

W869-0129 2/2



© 2020

Lloyd's Register
Foundation