

# STEEL BOILER.

DRAWING NO 2596

SECTION THROUGH C. CHAMBER SHOWING

STAYS THROUGH SHELL

16'-0" INSIDE DIA 11'-0" MEAN LENGTH  
180 LBS WORKING PRESSURE 360 LBS TEST PRESSURE

TO PASS BOARD OF TRADE & LLOYD'S SURVEY

SCALE, 1" = 1 FOOT

ONE OFF THIS

- 17. 2. 1914 -

## PARTICULARS OF MATERIAL

DESCRIPTION	MATERIAL	TENSILE STRENGTH
SHELL PLATE, BUTTSTRIPS & MANHOLE PLATE	STEEL	29 TO 33 TONS
GIRDERS	"	29 " 33 "
ALL OTHER PLATES	"	26 " 30 "
MAIN STAYS	"	28 " 32 "
SCREWED	"	26 " 30 "
RIVETS	"	27 " 32 "
TUBES	IRON	
RIVET BARS	STEEL	26 TO 30

1 1/4" STEEL STAYS

2-03 EFF AREA

NUTS BOTH ENDS

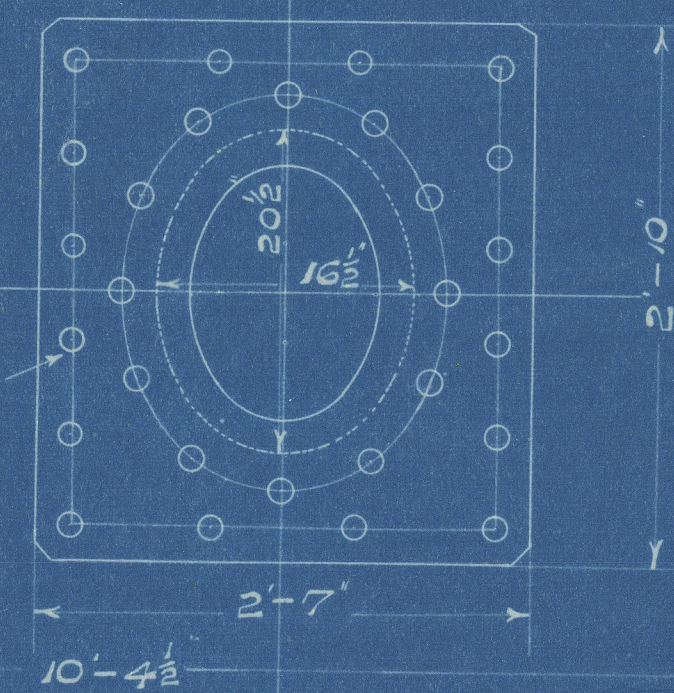
SCREWED 9 THREADS PER INCH

RIVETING ROUND TOP OF CIRCUMFERENTIAL SEAM FROM A TO B



1 1/2" RIVET HOLES.

1 1/2" PLATE.



TUBES 1879.

FURNACES 137.4

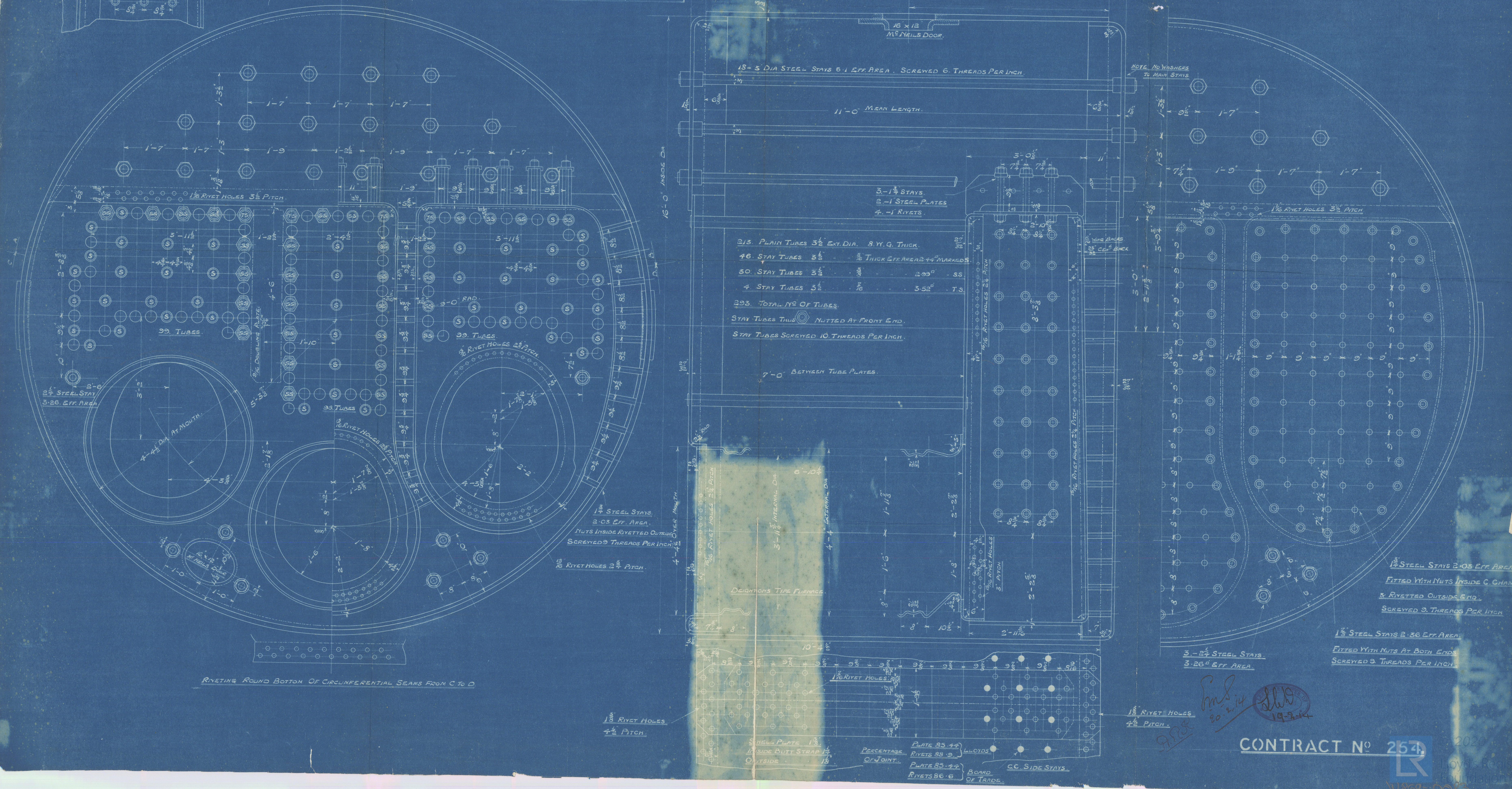
BACK TUBE PLATES 55.7

FRONT TUBE PLATES 32.

COMBUSTION CHAMBERS 257.

TOTAL 2361.1

GRATES SURFACE (5'-6" BAR 165.65) RATIO 45 = 26 1/7.



RIVETING ROUND BOTTOM OF CIRCUMFERENTIAL SEAMS FROM C TO D

CONTRACT NO 254



SUNDERLAND

MACCOLL & POLLOCK LTD

(1) BOILER NO 254

W.P. = 180 LBS

SLD SBC's S/S NO 284

Mark on boiler :-

NO 3232

LLLOYD'S TEST

360 LBS

10-7-1914

L.C.D.



S. S. "Killelean"

SLD. Rht. no. 26378.

W869-0083

© 2020

Lloyd's Register  
Foundation