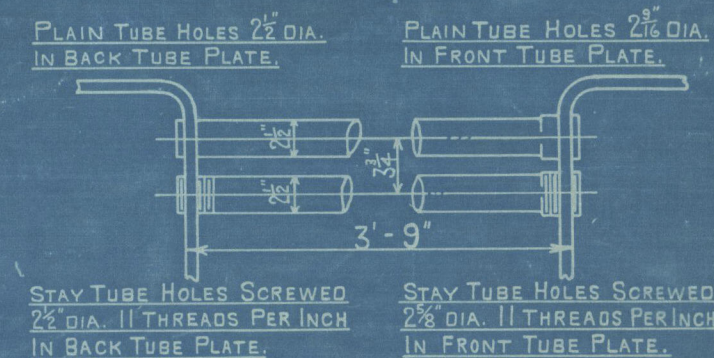


### HORIZONTAL FLUE TUBES.



approved 7/8/09

$$\frac{(6'-0") \times 14'-0") \times 400 \frac{\text{lb}}{\text{ft}^2} \times 100}{100} \text{ LBS.}$$

SCALE 1 INCH TO 1 FOOT.

### TENSILE TESTS:-

Foundation  
DRAWING NO. 7427

**SURVEY-LLOYDS.**  
**STANDARD.**



WS67-0100

Drawing No 7427.

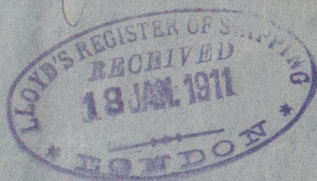
Cochran & Co Annan Ltd.

Boiler No 5196

GLASGOW REPORT No 29671

s/s "Hockwold."

See 24761.



RETAIN



© 2020

Lloyd's Register  
Foundation