

MIDSHIP SECTION  
STEEL SINGLE SCREW STEAMER.

SCHLE  $1\frac{1}{2}'' = 1.5''$  OOT. 22'-3" to QUARTER DK.

To CLASS 100 A.1. AT LLOYDS.

EQUIPMENT b.

2 BOWER ANCHORS Stockless each 30 1/2 cmts } Collective  
1 BOWER RAYMOND " " 26 cmts } weight 87 cmts  
240 FATHOMS 1 7/8 SHU CHAIN CABLE (Mid Net 319'-17').  
1 STEERING ANCHOR ex Stock 7 1/4 cmts  
1 KEDGE ANCHOR ex Stock 4 1/4 cmts  
75 FATHOMS 3 1/8" STEEL WIRE (STEERING WIRE)  
90 FATHOMS 3 1/8" STEEL WIRE (TOWLINE)  
2 @ 90 FATHOMS 6" MANILLA HAWSEERS  
2 @ 90 FATHOMS 5" MANILLA WIRE  
2 @ 90 " 2 1/2" Steel Wire Hawseers.  
2 @ 90 " 2 1/2" " " "

LLOYDS NUMERALS.

TRANSVERSE № 53-25 in WAY of MAIN Dk ✓  
~~TRANSVERSE № 58-25 in WAY of QUARTER Dk~~  
 LONGITUDINAL № 13685-25 in WAY of MAIN Dk.  
~~LONGITUDINAL № 14970-25 in WAY of QUARTER Dk.~~  
 $\frac{1}{2}$  to MAIN Dk 14.89.  
 $\frac{1}{2}$  to QUARTER Dk 11.5. ✓

EQUIPMENT No

LONGITUDINAL N<sup>o</sup>  $L \times (B + D) = 13685.25$   
 QUARTER DECK  $197.7 \times 5 = 988.5$   
 FORECASTLE DK.  $26.14 \times 7 \times .75 = 137.23$   
 ENGINE & BOILER CASINGS  $47.7 \times 5 = 164.5$   
 EQUIPMENT NUMBER 14975.48

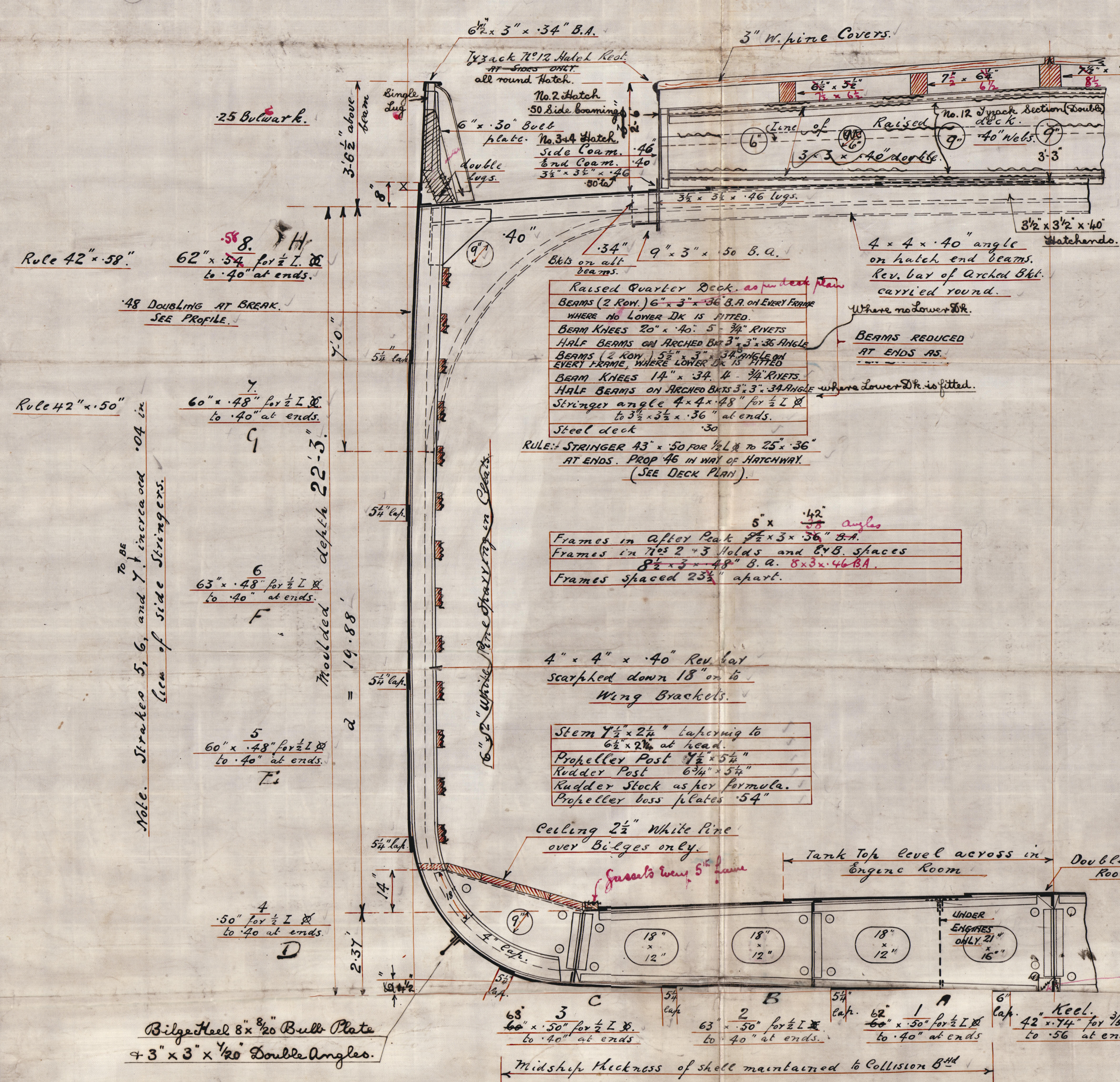
### RIVETING (CONTINUED.)

EDGE CONNECTIONS		1/2 LENS & DOUBLE RIVETED	AT ENDS DOUBLE RIVETED
KEEL LANDING			
SHOESTRAPS & STRAPES BELOW <i>SHOESTRAPS</i>	Do	Do	Do
SHILL PLATING FROM KEEL TO UPPER TURN OF BLADE	Do	Do	Do
SHILL PLATING FROM UPPER TURN OF BLADE TO STRAKE BELOW	Do	Do	Do
TRINK TOP MOOLE LINE STRAKE	SINGLE RY.	SINGLE RY.	
REINFORCER OF TRINK TOP	Do	Do	Do
ALL DL PLATING INCLUDING SHOESTRAPS & SHILL LANDING	Do	Do	Do

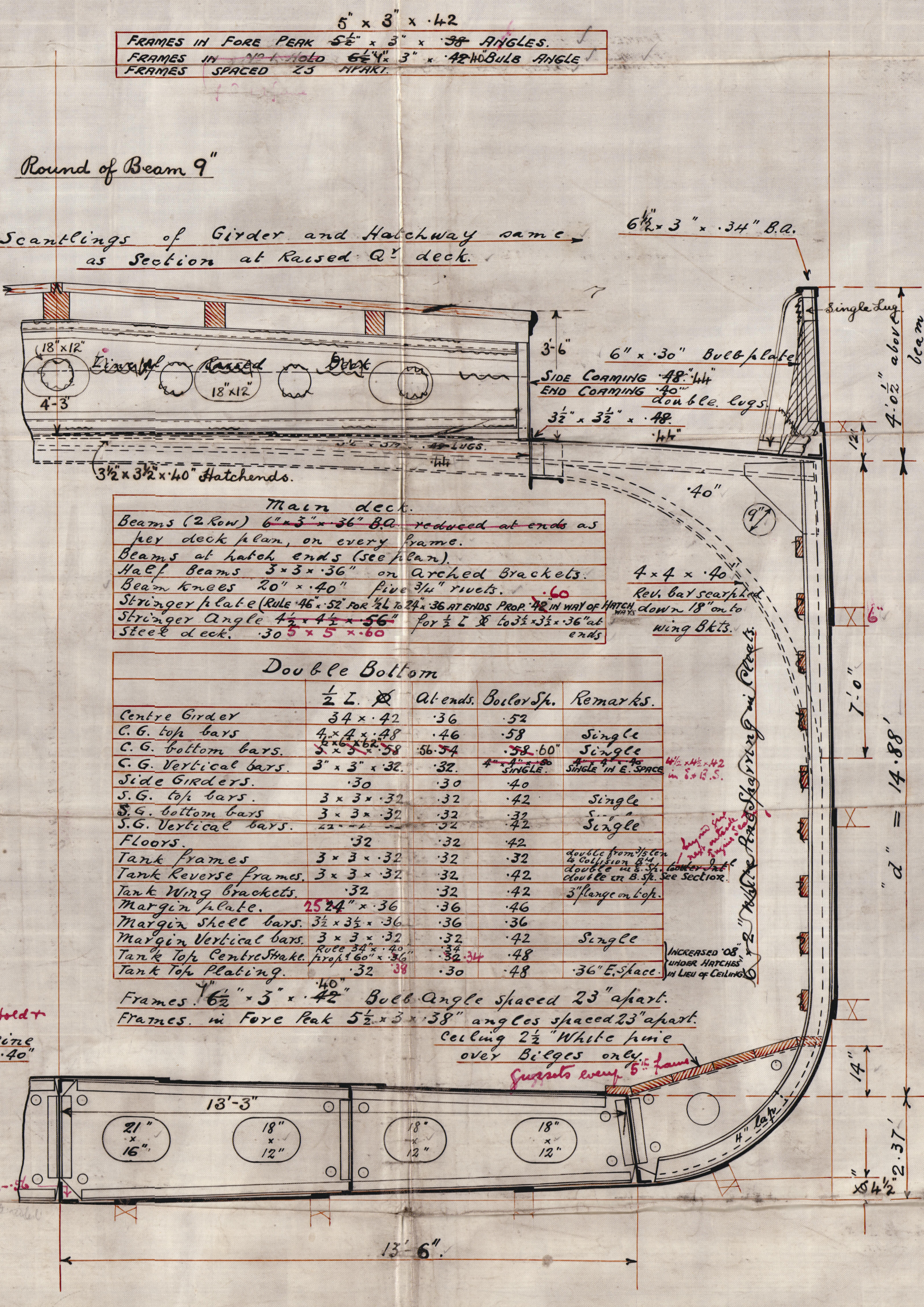
## RIVETING

END CONNECTIONS		FOR PL LENGTH $\frac{1}{2}$	AT ENDS.
KEEL		QUADRUPLE RY. STAYS.	TREBLE RY. STAYS.
MAIN DECK SHEERSTRAKE		QUADRUPLE RY. OVERLAPS.	DOUBLE RY. OVERLAPS. NOT ELONGATE 1/2.
STROKE BELOW MAIN DK SHEERSTRAKE		TREBLE RY. OVERLAPS.	Do.
QUARTER DECK SHEERSTRAKE.		TREBLE RY. OVERLAPS.	Do.
STROKE BELOW QUARTER DK SHEERSTRAKE		✓ Do.	Do.
SHELL PLATING FROM KEEL TO UPPER		✓ Do.	Do.
TURN OF BILGE.			Do.
SHELL PLATING FROM UPPER TURN		✓ Do.	Do.
of BILGE to SPANKE PLATE.			Do.
FORECASTLE SIDES.			DOUBLE RY. OVERLAPS.
MAIN DK STRINGER PLATE		TREBLE RY. OVERLAPS	Do.
QUARTER DK STRINGER PLATE.		Do.	Do.
FORECASTLE DK STRINGER PLATE			Do.
MAIN DECK PLATING.		DOUBLE RY. OVERLAPS.	SINGLE RY. OVERLAPS
QUARTER DECK PLATING.		1/10.	Do.
FORECASTLE DK PLATING & TIES			DOUBLE RIVETED.
CENTRE GIRDER		TREBLE RY. OVERLAPS.	DOUBLE RY. OVERLAPS NOT ELONG. 3/4.
MARGIN PLATE		DOUBLE RIVETED OVERLAPS.	DOUBLE RY. OVERLAPS
TANK TOP CENTRE STROKE		1/10.	Do.
TANK TOP PLATING.		DOUBLE RY. OVERLAP.	SINGLE RY. OVERLAPS

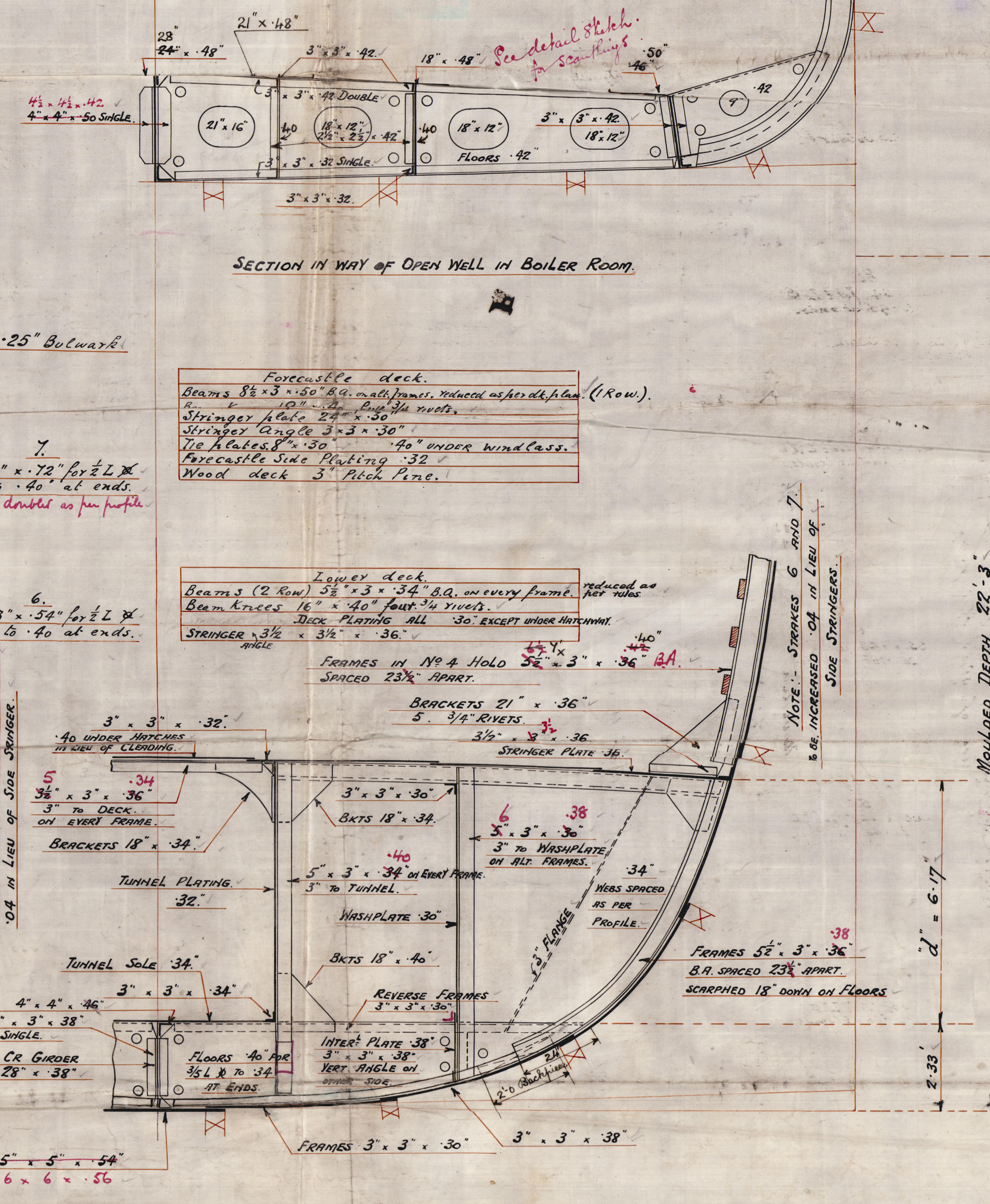
SHELL PLATING WHERE OVER.  
RULE BREADTH TO BE.  
INCREASED 1 ROW FOR.  
 $\frac{1}{2}$  LEN  $\phi$ .



Section in way of Raised Q<sup>r</sup> Deck.  
Nos 2 and 3 Holds and E. and B. Spaces.



Section in way of main deck  
No 1 Hold.



SECTION IN WAY OF NO 4 HOLD



Ailsa S. B. C<sup>2</sup>  
~~4~~  
 No 292

Midship Section

GLASGOW REPORT No. 36768

%. Kante

Lloyd's Register  
Foundation