

SURFACES ETC.		ONE BOILER	5 BOILERS
TUBES		2704 #	13520 #
FIREBOX TOP AND SIDES		216 "	1080 "
" BACK		96 "	480 "
" TUBE PLATE		66 "	330 "
FURNACES		218 "	1090 "
TOTAL HEATING SURFACE		3300 #	16500 #
GRATE AREA (5' 6" BARS)		77 #	385 #
TUBE AREA		11.34 "	58 "
WATER "		180 "	900 "
STEAM SPACE		612 #	3060 #
GRATE AREA HEATING SURFACE		1 : 42.8	
" TUBE		1 : 35.1	
" WATER		1 : 2.34	
" STEAM SPACE		1 : 7.95	
% BOILER ABOVE FIREBOX		31.8	
HEIGHT OF WATER		33 TONS	165 TONS

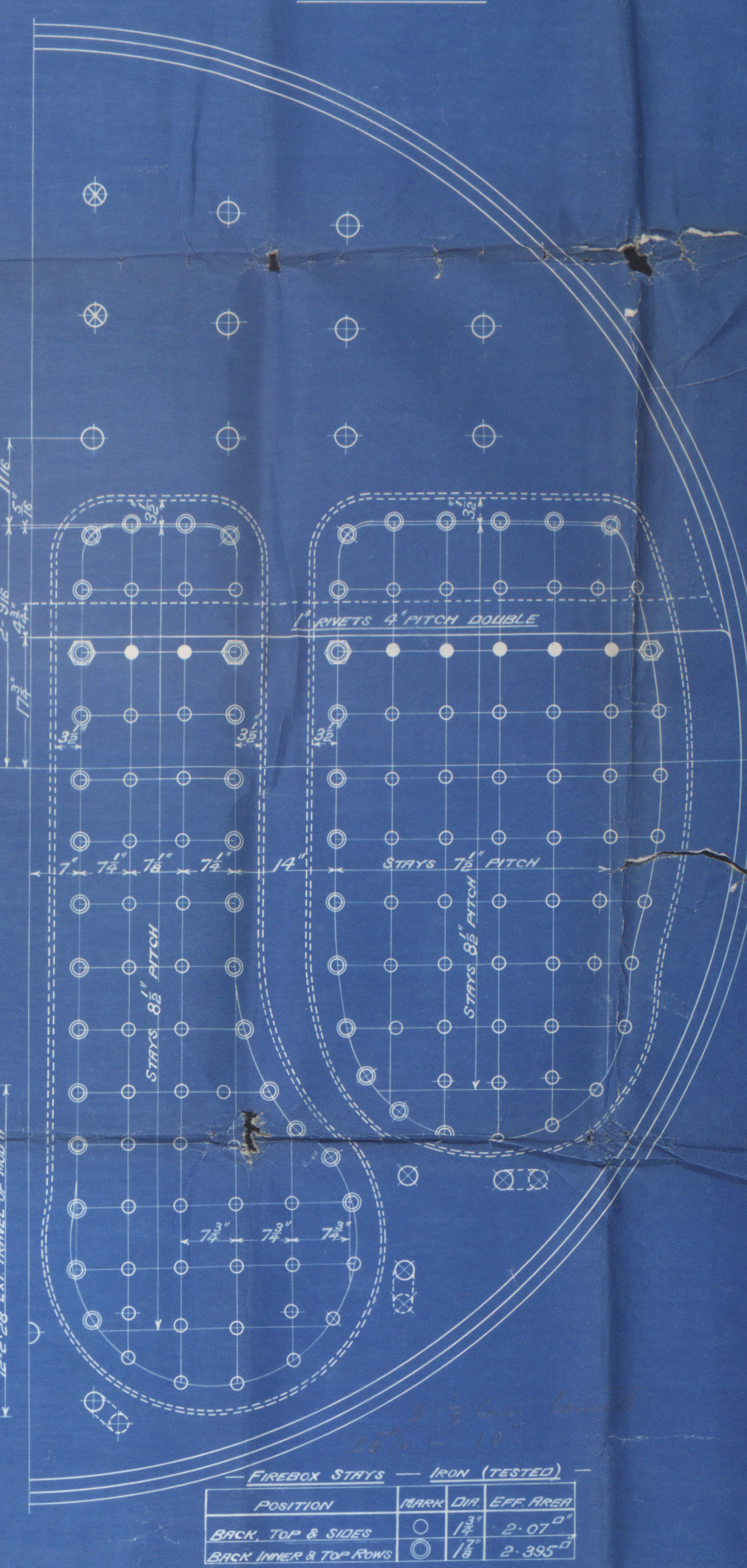
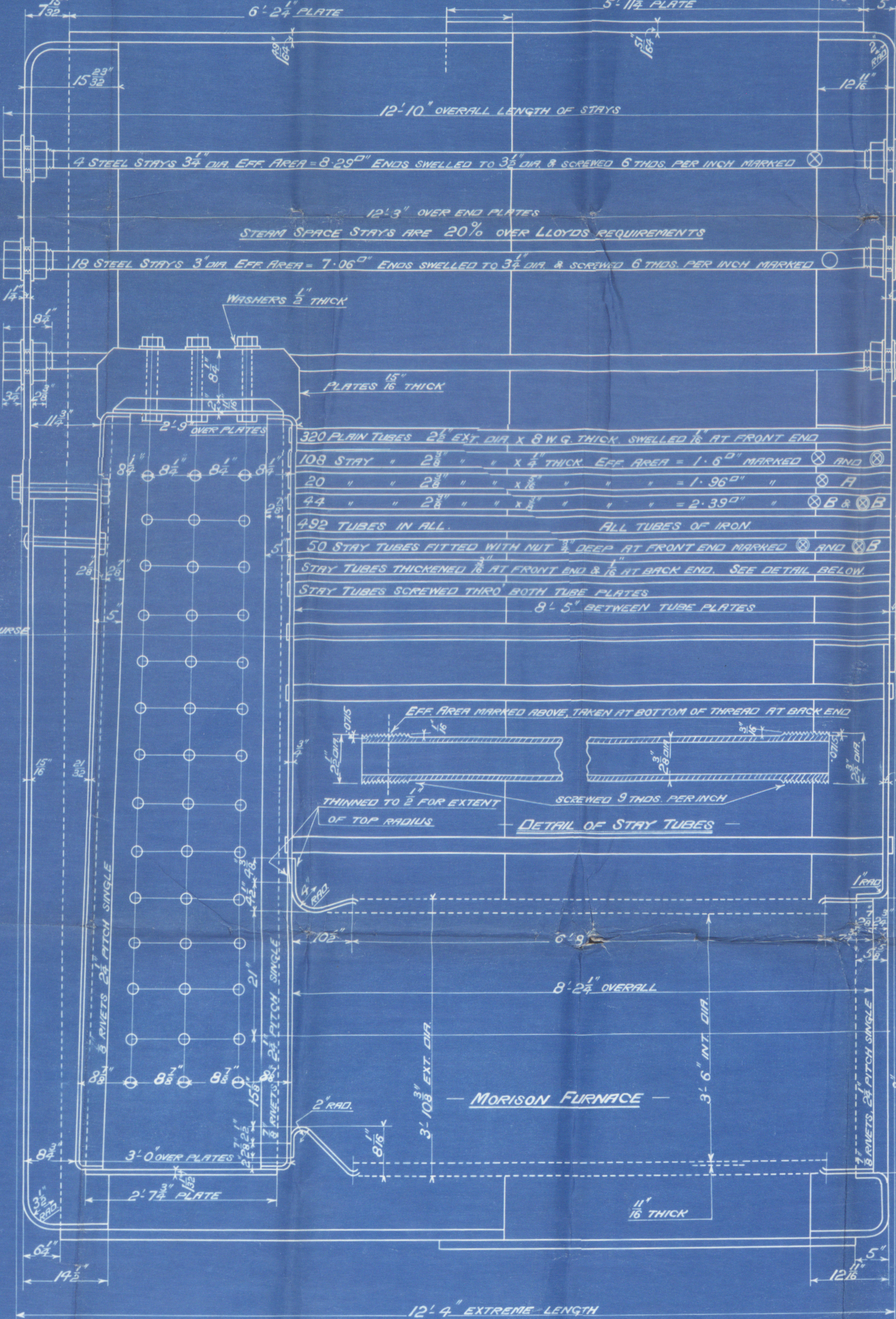
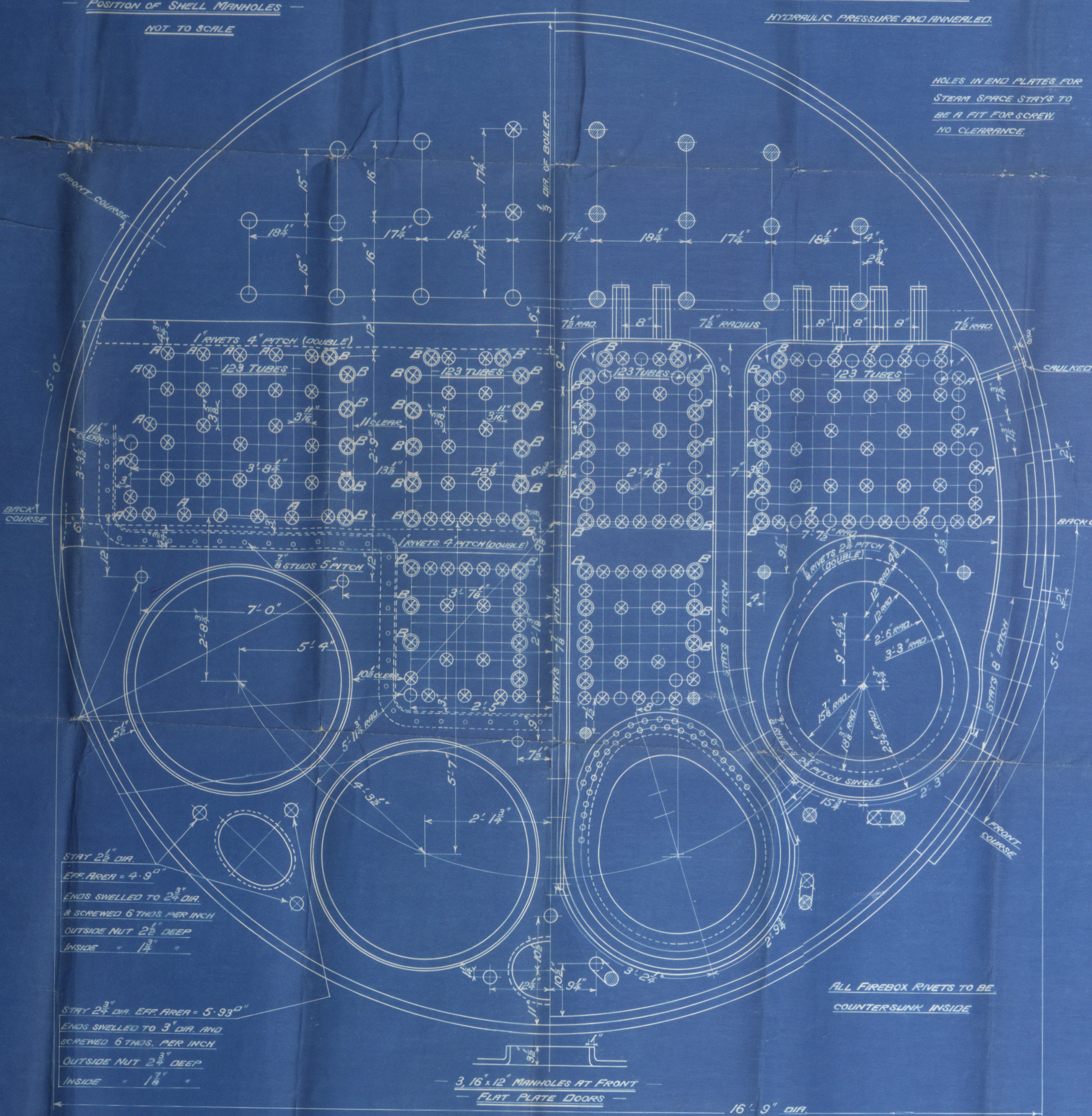
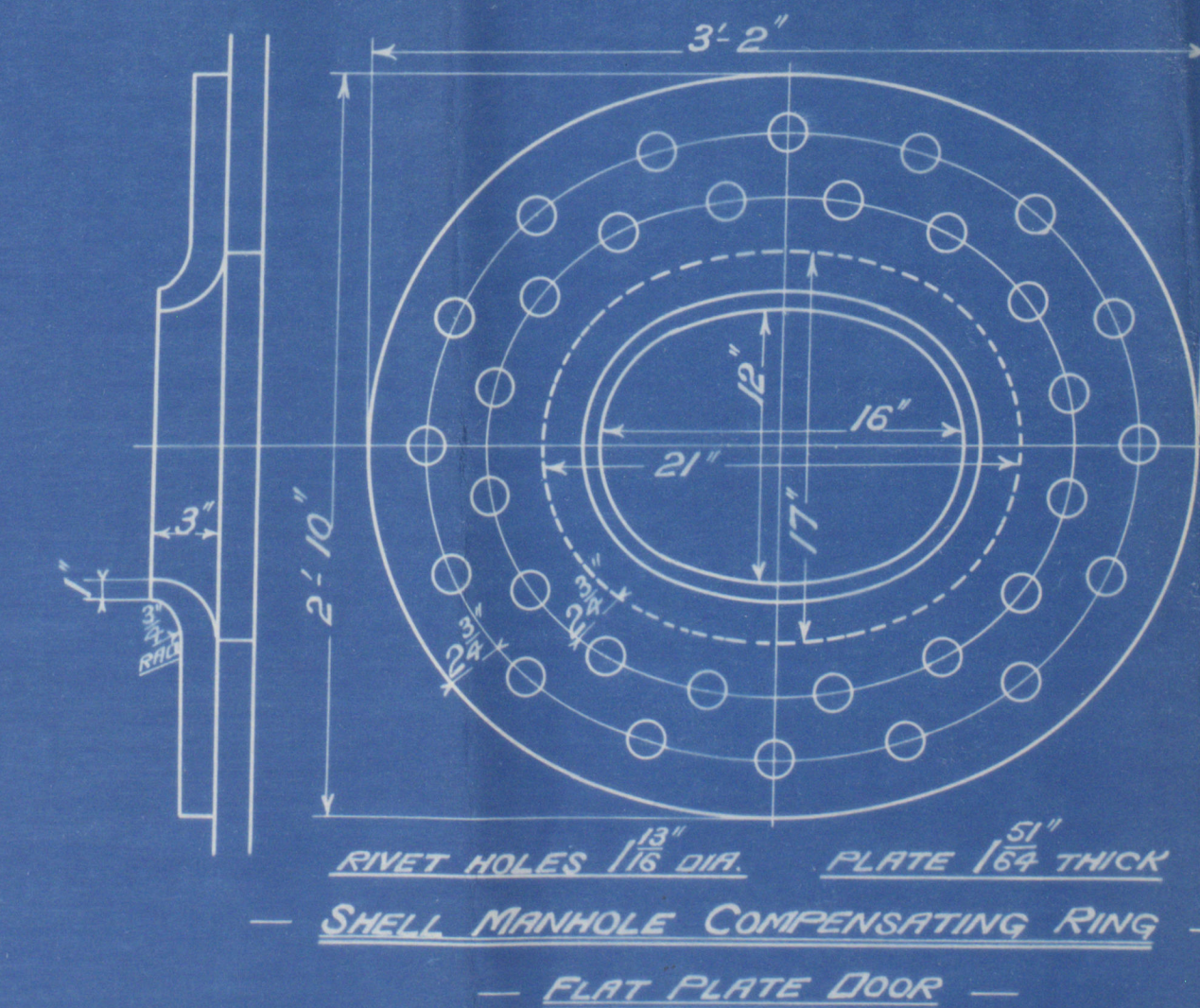
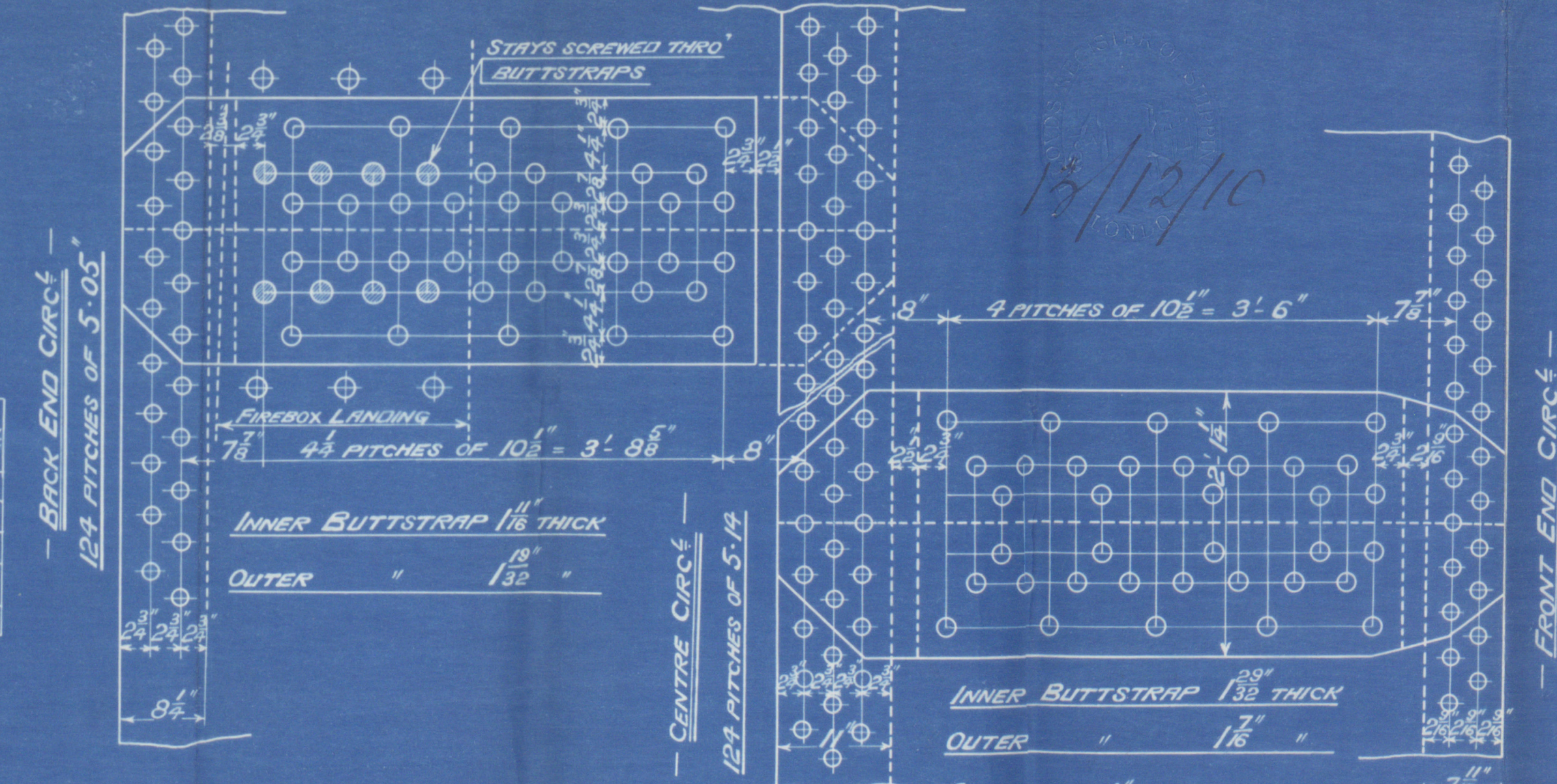
RIVETING		LONG	CIRCUMFERENTIALS
		BACK	CENTRE FRONT
RIVET HOLE DIA		13/16	13/16
PITCH		10.5	5.05
% PLATE		82.73	62
% RIVET		101.7	98.5

LIMITS OF TENSILE STRENGTH & MATERIAL	
SHELL BUTTSTRAPS	30 TO 34 TONS
GIRDERS	28 " 32 "
OTHER PLATES	26 " 30 "
FURNACES	26 " 30 "
MAIN STAYS	28 " 32 "
SCREWED STAYS	NOT LESS THAN 2 1/2 TONS
RIVET BARS	26 TO 30 TONS

ALL RIVET HOLES DRILLED IN PLACE.  
MAIN STAYS SHELLED AT ENDS BY  
HYDRAULIC PRESSURE AND ANNEALED.

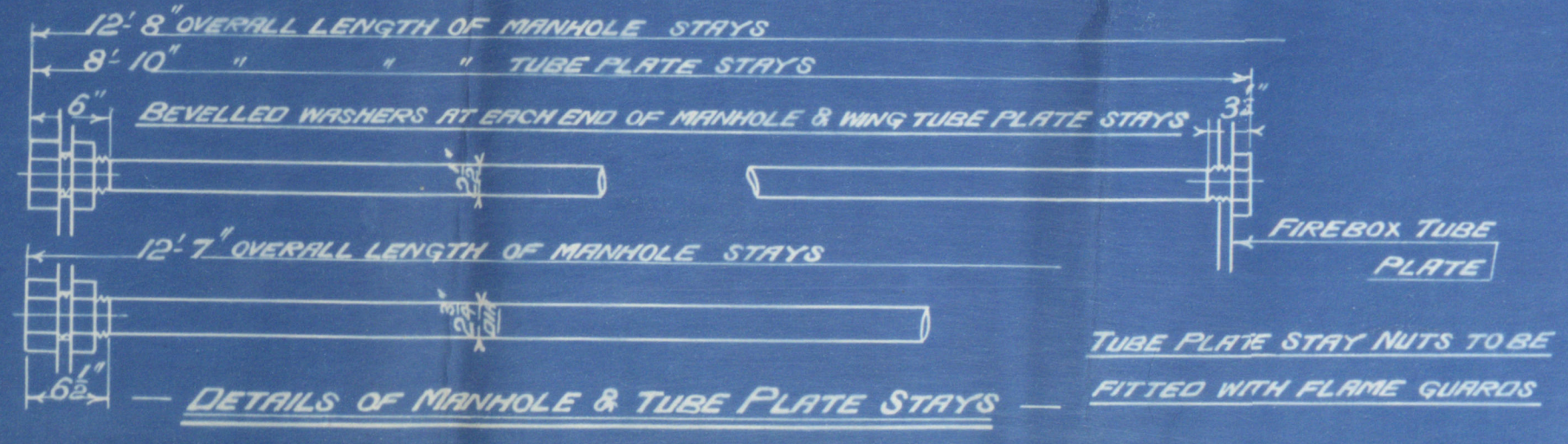
HOLES IN END PLATES FOR  
STEAM SPACE STAYS TO  
BE A FIT FOR SCREW,  
NO CLEARANCE.

ALL FIREBOX RIVETS TO BE  
COUNTERSUNK INSIDE



**MAIN BOILER**  
**5 OFF**  
**CON<sup>T</sup> N<sup>OS</sup> 556/7 (TWIN SCREW)**  
WORKING PRESSURE = 220 LBS PER SQ. INCH  
TO PASS LLOYD'S & BOARD OF TRADE SURVEYS  
SCALE, ONE INCH = ONE FOOT

ALL STAYS SCREWED THRO' BOTH PLATES AND NUT FITTED AT EACH END EXCEPT WHERE OTHERWISE STATED ON DRAWING. ALL 1 1/2\"/>



TR 5934A  
TRADED 30<sup>TH</sup> NOV 1910



From DAVID ROWAN & CO., GLASGOW.

ENCLOSURE

FOR

© 2020

*Lloyd's*

W860-0135  $\frac{1}{2}$

Lloyd's Register

Foundation

MAIN BOILER

Miss<sup>rs</sup> David Rowan & Co

N<sup>o</sup> 556/7

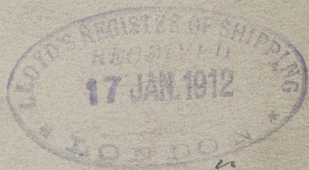
Main Boilers

Amended Plan

GLASGOW REPORT No. 30995



11172  
Clyde Test  
4404  
I-H-H  
30-8-11



5/s Thurman



© 2020

Lloyd's Register  
Foundation

W860-0135