

VESSELS OF 100 TONS AND UPWARDS.

These particulars are supplied by the Registrar General of Shipping and Seamen for the sole use of Lloyd's

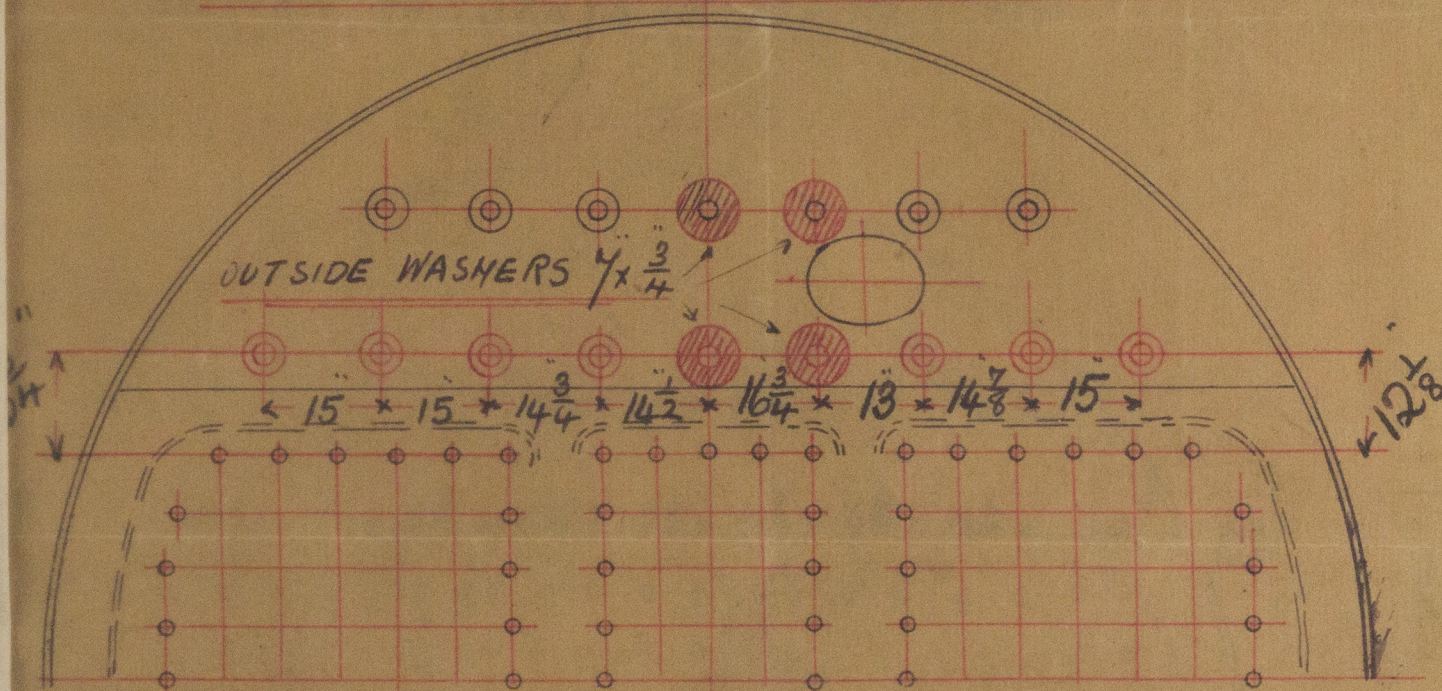
of Kirkham Abbey
Hull Report No 19969

No 542

PORT BOILER.

POSITION OF STAYS IN STEAM SPACE

STAYS SHOWN IN RED AS ACTUALLY FITTED



LOOKING ON BACK OF BOILER.

Lloyds

7602 B
8.4.08



© 2020

Lloyd's Register

W860-0019