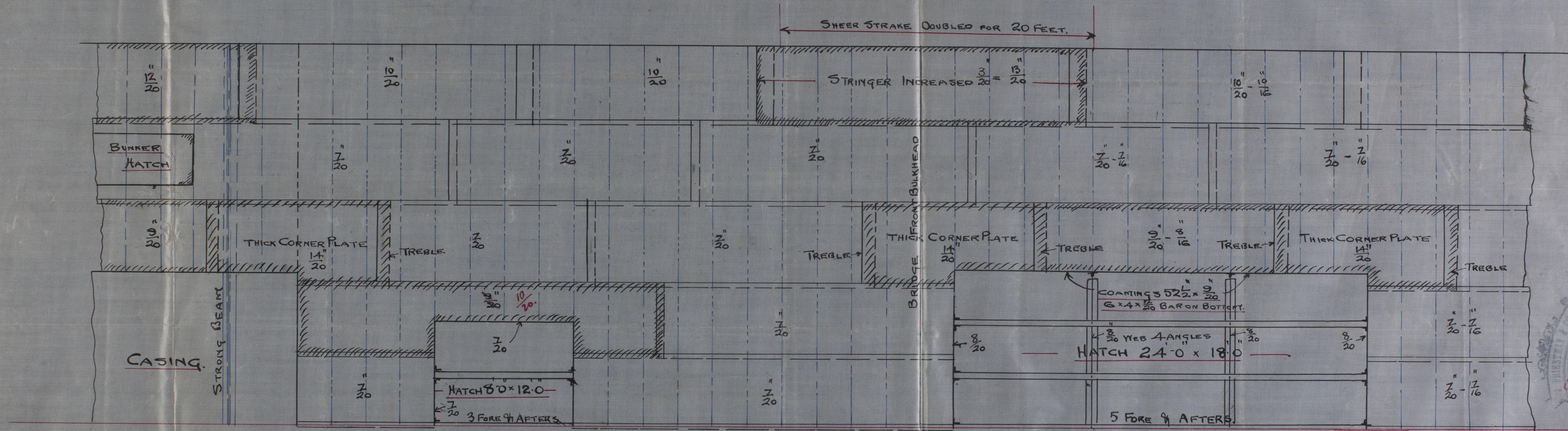


SPAR DECK N° 97

PROPOSED AMENDED ARRANGEMENT OF PLATING

SCALE $\frac{1}{4}$ " = ONE FOOT.



NOTE:- SIMILAR ARRANGEMENTS TO ABOVE AT ALL HATCHWAYS,
AND OTHERWISE AS PER APPROVED DECK PLAN