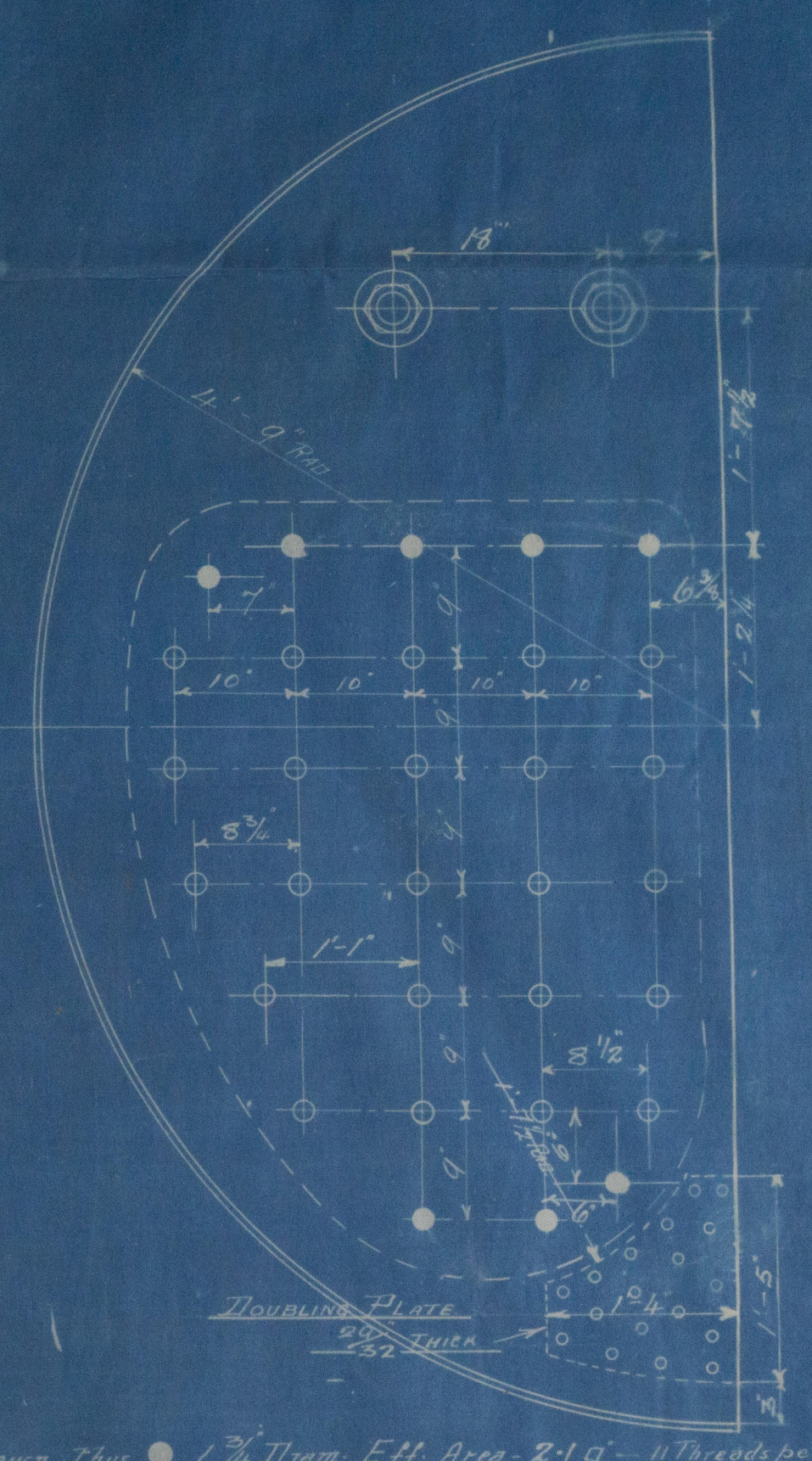
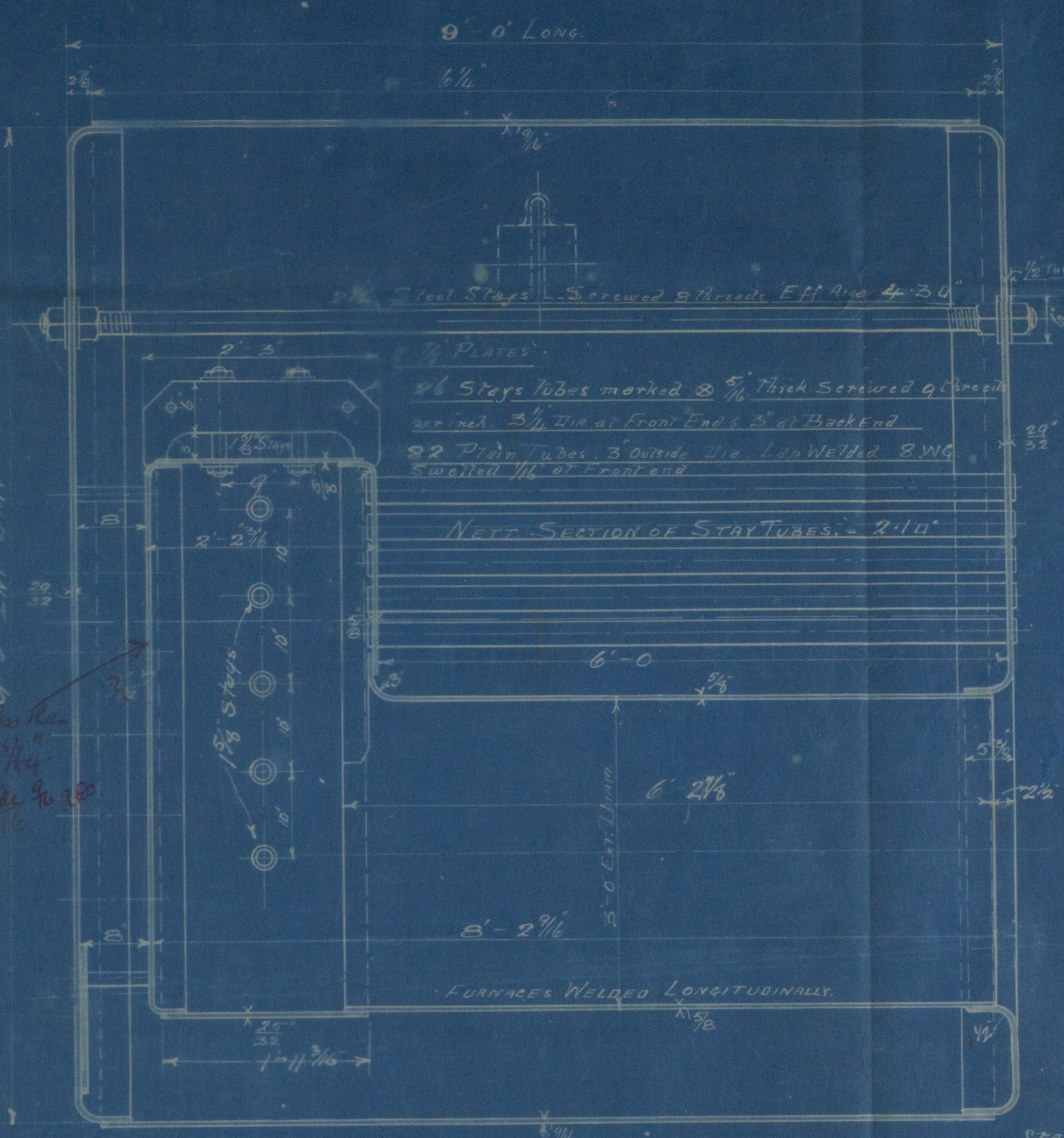
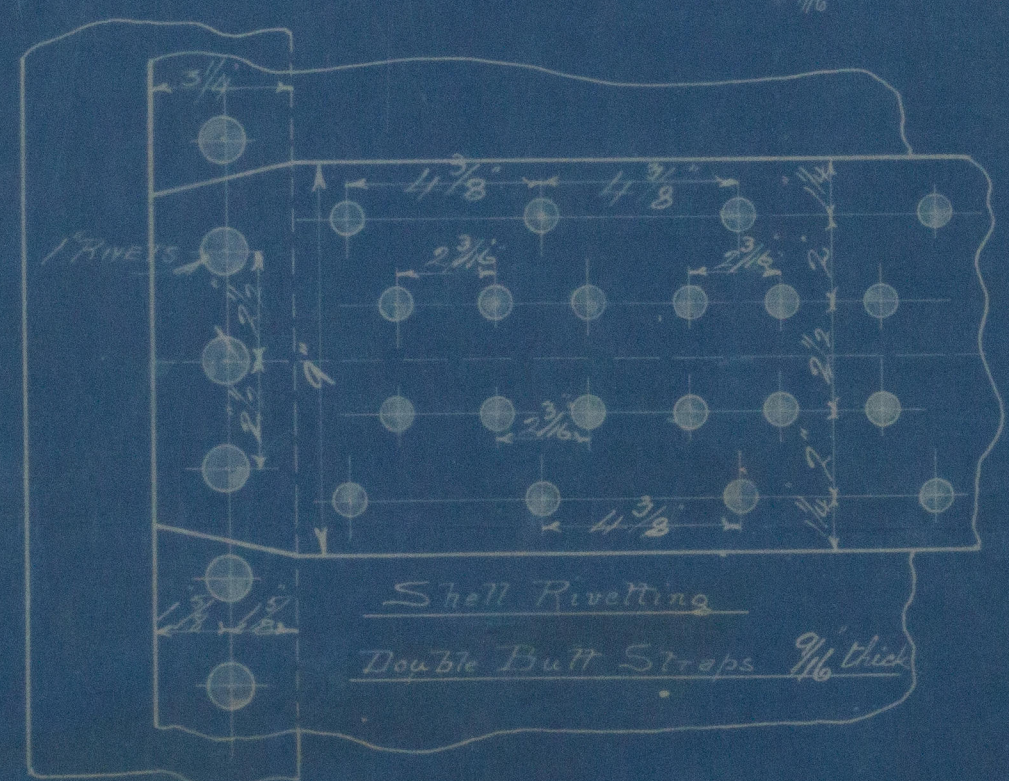
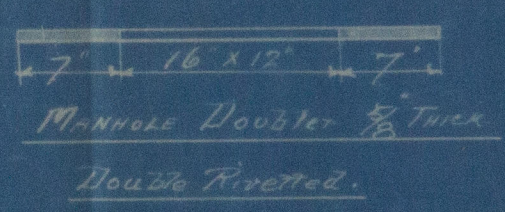


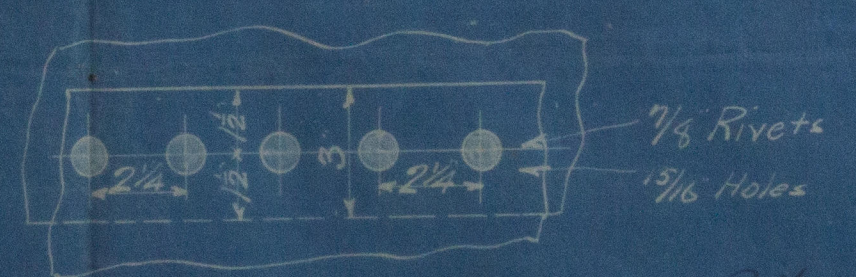
26-3-07



To pass Lloyds Survey for 100 lbs working pressure.
 Tensile Strength of Shell Plates 28 to 32 Tons
 All other Plates 26 to 30 Tons.
 All Stays To be of Mild Steel
 All Screwed Stays Fitted with Nuts and Washers
 at both ends



Shell Hydraulic Riveted where practicable.
 All holes drilled in place after bending.
 Shell Plates 1/2" Thick. Rivet holes 1 1/8" x 4 3/8" Pitch
 Circumferential Seams Single Riveted. 1 1/8" holes 2 1/2" Pitch

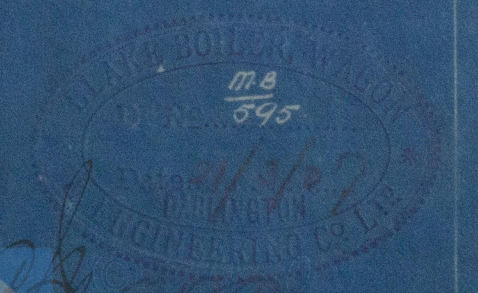


DRAWING N^o MB 595

STEEL BOILER 9'-6" DIAM. 9'-0" LONG 100 LBS

ORDER N^o MB 108

Scale 1" = 1 foot



W839-0192

Black Boiler, Wagon & Ry^{Co}

Boiler N^o M.B
108.

100 lbs. Working Pressure

Made report No. 5192

No. 3997
LLOYD'S TEST.
200 lbs.
16-8-07
RDS

Fitted to S/s "Mars"

Purposes with S/s 304

Ss. Mars

Hpl. Report No. 13356

SOLARITE BRAND, REGD.
ALLOTT, JONES & CO., LIVERPOOL, MAKERS.

RETAIN



© 2020

Lloyd's Register
Foundation