

DIMENSIONS.

LENGTH OF FIRE BARS	
AREA OF FIRE GRATE	
DIAM OF TUBES OUTSIDE	3 1/2
LENGTH OF TUBES	6'-10 3/8
NO OF TUBES	184
SURFACE OF TUBES	1158 1/2
TOTAL HEATING SURFACE	1370 1/2
WORKING PRESSURE	180
DIAM. OF SAFETY VALVE	

Particulars of Rivetting

Shell - Longitudinal Seams to be treble rivetted double Butt Straps.
Holes drilled 1 1/8 dia 6 3/8 Pitch

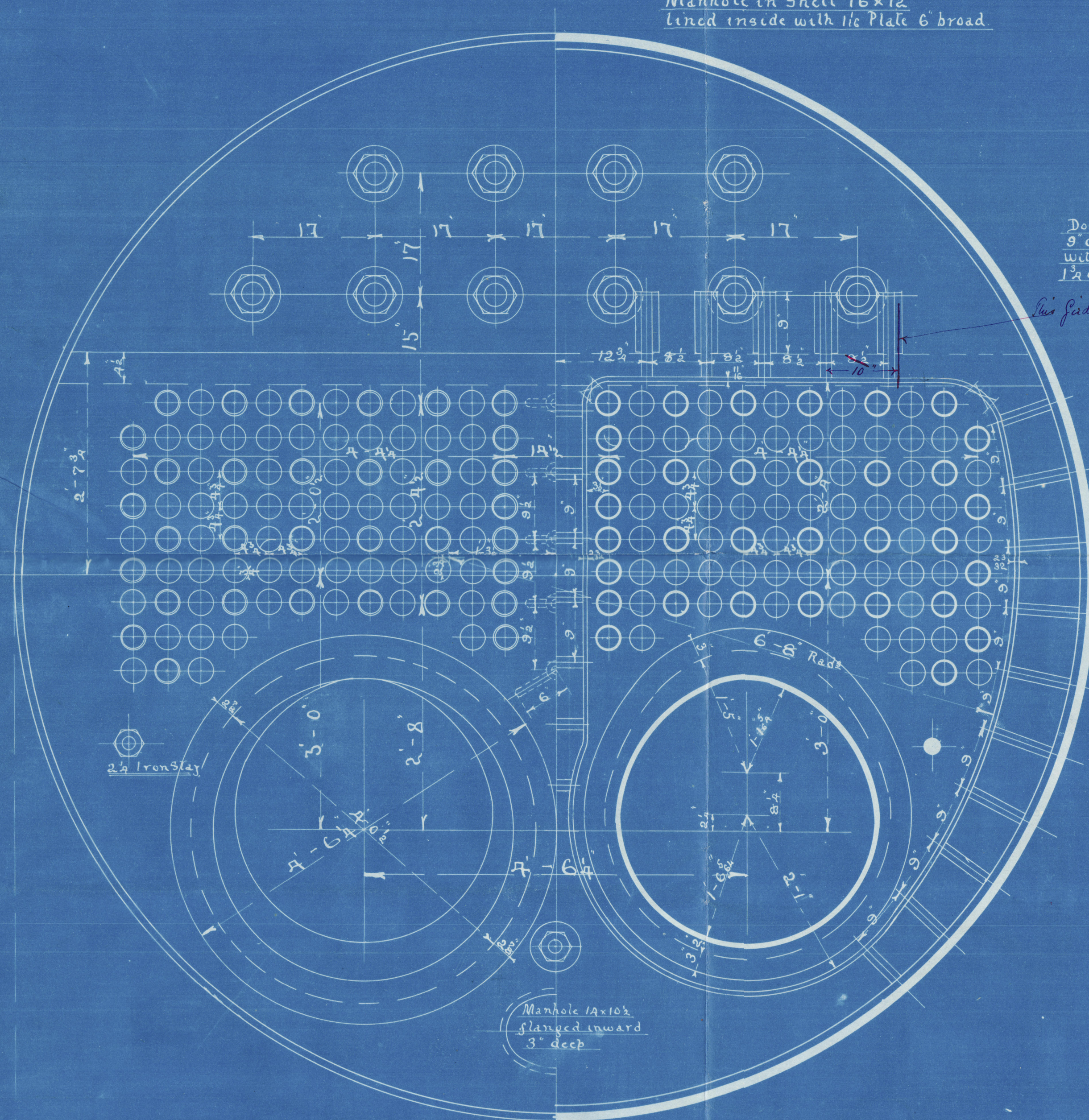
Circumferential Seams to be double rivetted Lap Joints.
Holes drilled 1 1/8 dia 3 1/2 Pitch

Furnaces - Front End to be single rivetted Back End to be single rivetted

Comb^d Chamber - To be double rivetted along bottom & up sides to level of Furnace Tops
Remainder to be single rivetted

End Plates - Cross Seams to be double rivetted

Manhole in Shell 16x12
Lined inside with 1/16 Plate 6" broad

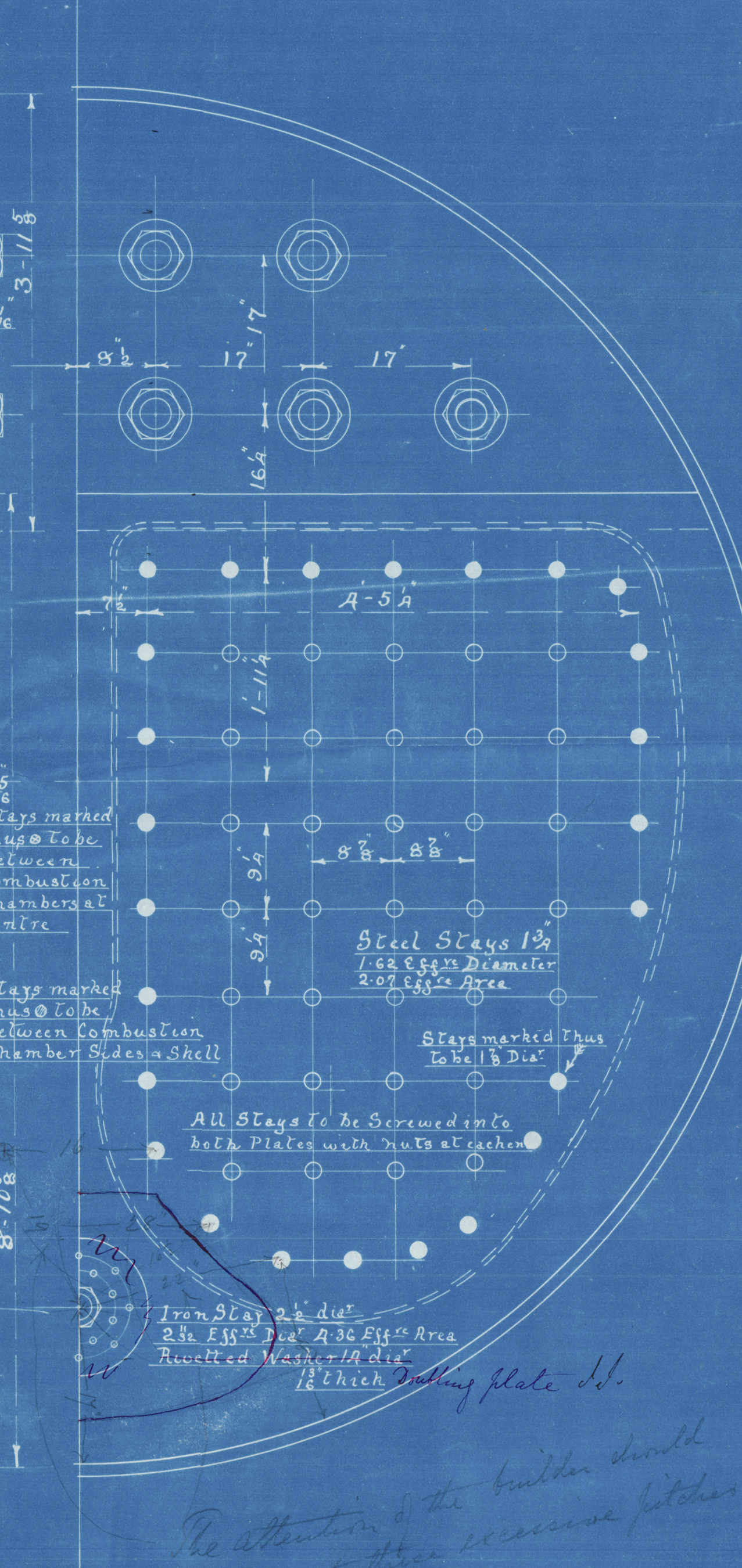
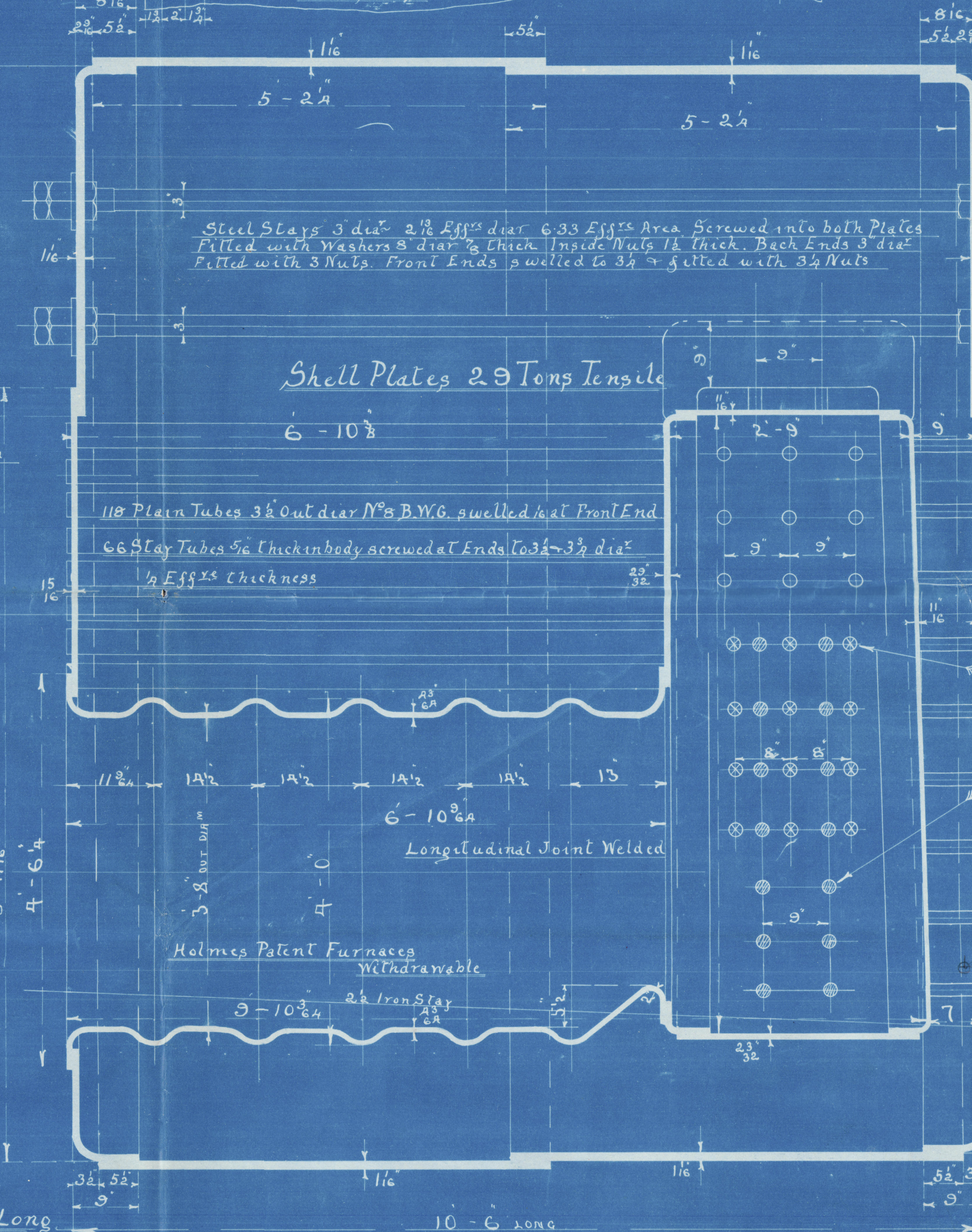
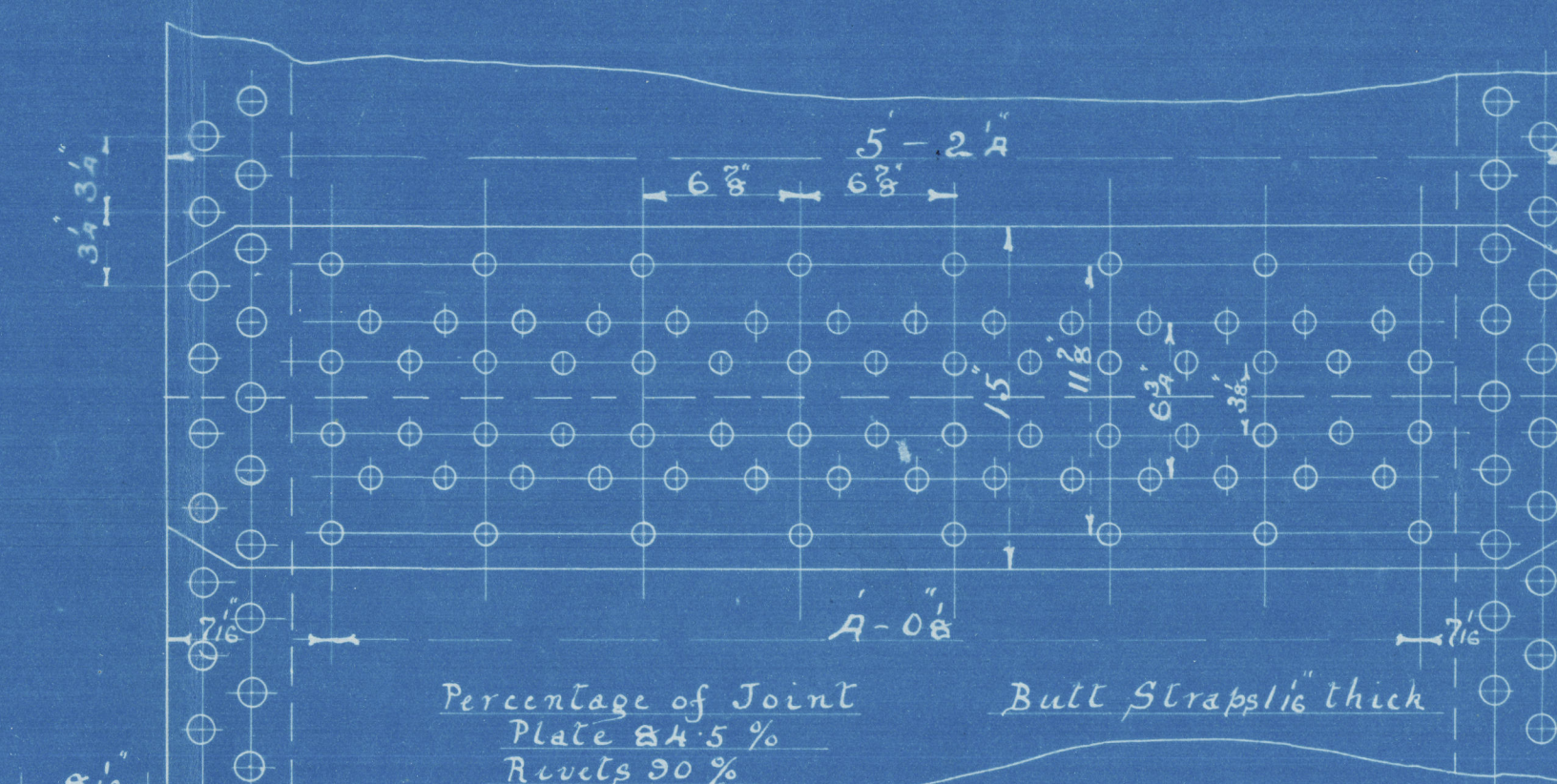


Double Girdle Stays of Iron
9" deep 7/8" thick 8 1/2" Pitch
with 2 Steel Supporting Bolts
1 1/2" dia 2.07 Eff^{ss} Area 8" Pitch

Two Girders to be bored & fitted
to make 1" thick

Double Girdle Stays of Iron
9" deep 7/8" thick 8 1/2" Pitch
with 2 Steel Supporting Bolts
1 1/2" dia 2.07 Eff^{ss} Area 8" Pitch

Combustion Chamber Steel
Stays 1 3/4" dia 1.62 Eff^{ss} dia
2.07 Eff^{ss} Area Screwed into
both Plates & fitted with Nuts
at each end.



The attention of the builder should
be drawn to these successive pitches

CHARLES D. HOLMES & CO
HULL ENGINEERING WORKS 2-1-02
HULL

2-63/1/02
661 1/1/02



8.1.02

STEEL BOILER N^o 661

Charles D. Holmes "Co. B" No. 661

Cook, Welton Gemmelly /s No 325

/s Mackenzie

Hull Report No. 14957

RETAIN

W836 -0038



© 2021

Lloyd's Register
Foundation