

2/12/10

PARTICULARS OF RIVETING

LONGITUDINAL JOINT TO BE TREBLE RIVETED DOUBLE BUTT HOLE DRILLED  $\frac{1}{8}$ " DIA 8" PITCH  
 CIRCUMFERENTIAL DOUBLE LAP JOINT  $\frac{1}{8}$ " DIA 4" PITCH  
 FURNACES TO BE DOUBLE RIVETED AT FRONT END SINGLE RIVETED AT BACK END  
 COMB. CHAMBER DOUBLE RIVETED TO LEVEL OF FURNACE CENTRES FROM BOTTOM  
 $\frac{1}{8}$ " RIVETS 3" PITCH REMAINDER SINGLE RIVETED  $\frac{1}{8}$ " RIVETS 2" PITCH  
 CROSS BEAMS DOUBLE RIVETED  $\frac{1}{8}$ " RIVETS 3" PITCH

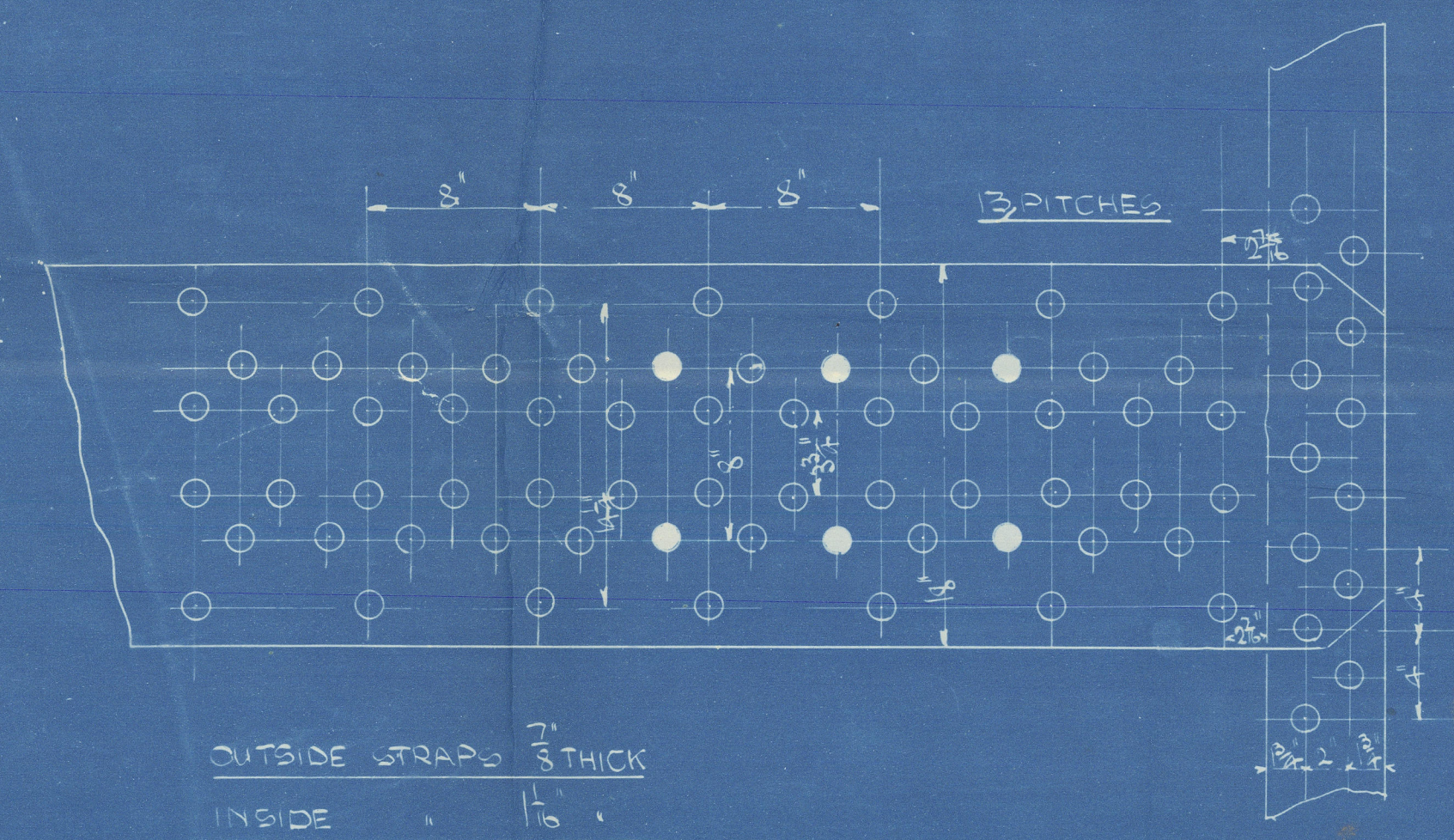
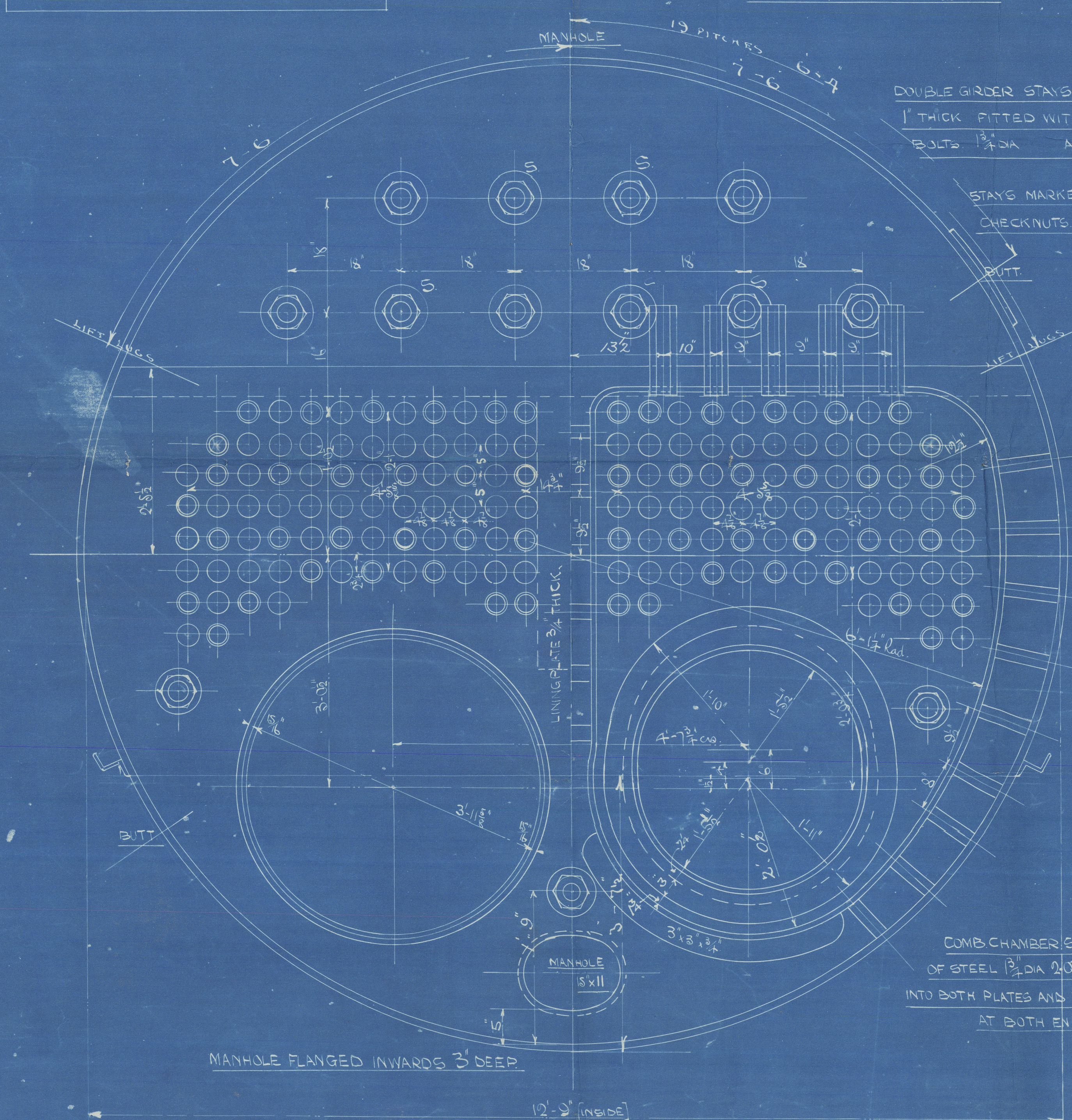


PLATE 85%  
 RIVETS 88-2%

DIMENSIONS

LENGTH OF FIRE BARS 5-6  
 AREA OF FIRE GRATE 39  $\square$  FT  
 DIAM. OF TUBES OUTSIDE  $2\frac{1}{2}$ "  
 LENGTH OF TUBES 6-7 $\frac{1}{2}$ "  
 NO. OF TUBES 154  
 SURFACE OF TUBES 912  
 TOTAL HEATING SURFACE 1180  $\square$  FT  
 WORKING PRESSURE 200  
 DIAM. OF SAFETY VALVE 2 $\frac{1}{2}$ "

MANHOLE IN SHELL 16"  $\times$  12" LINED INSIDE  
 WITH PLATE 7" BROAD  $\frac{1}{8}$ " THICK



DOUBLE GIRDER STAYS OF STEEL 9 $\frac{1}{2}$ " DEEP  
 1" THICK FITTED WITH 3 STEEL SUPPORTING  
 BOLTS  $\frac{1}{2}$ " DIA AREA 2.07 EFFECTIVE

STAYS MARKED S TO HAVE  
 CHECKNUTS  $\frac{1}{2}$ " DEEP

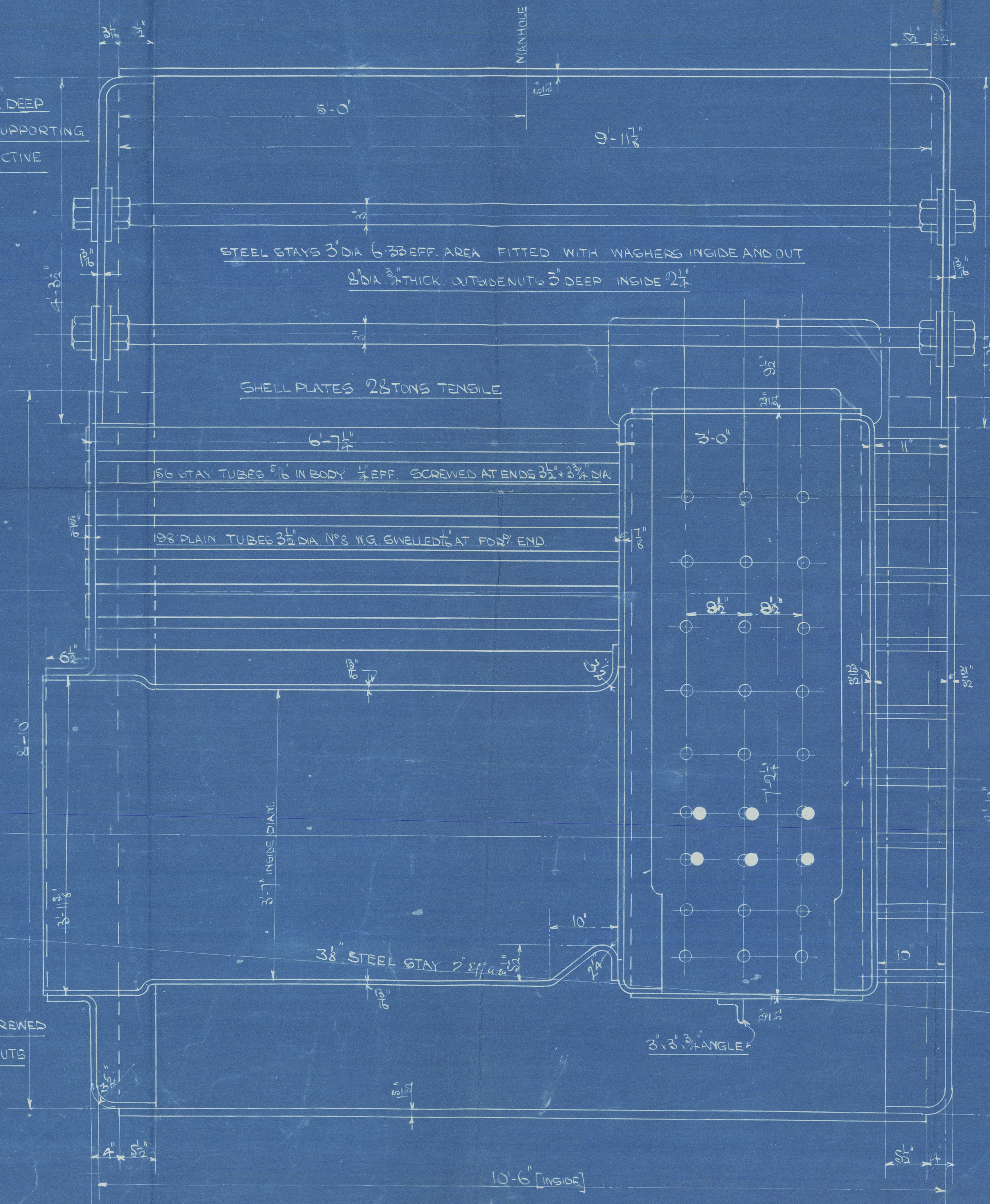
STEEL STAYS 3" DIA 6" EFF. AREA FITTED WITH WASHERS INSIDE AND OUT  
 3" DIA 3" THICK OUTSIDE NUTS 3" DEEP INSIDE 2 $\frac{1}{2}$ "

SHELL PLATES 23 TONS TENSILE

150 STAY TUBES 6" IN BODY 4" EFF. SCREWED AT ENDS  $2\frac{1}{2}$ "  $\times$  3" DIA

138 PLAIN TUBES 3 $\frac{1}{2}$ " DIA 1" P. 1" G. SHELLED AT FRONT END

COMB. CHAMBER SCREW STAYS  
 OF STEEL  $\frac{1}{2}$ " DIA 2.07 EFF. AREA SCREWED  
 INTO BOTH PLATES AND FITTED WITH NUTS  
 AT BOTH ENDS.



12'-9" INSIDE DIAM. 10'-6" INSIDE LENGTH  
 200 LBS  $\square$

BOILER N° 921-2

CHARLES D. HOLMES & CO. LTD.  
 ENGINEERS & BOILER MAKERS  
 HULL

28/11/10

J.M.C.

28/11/10

May 5/1910



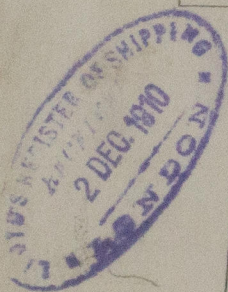
Messrs  
Charles D. Holmes &

Boilers No 921. 2

Lord Salisbury

No 1821  
Lloyds Test  
400 lbs.  
J.B.  
30.6.11

Hull Rpt No 24208



Michael Angelo

No 1823  
Lloyds Test  
400 lbs  
J.B.  
10.7.11

RETAIN

W832- 0150



© 2020

Lloyd's Register  
Foundation