



30.10.05
6.11.05
22.11.05

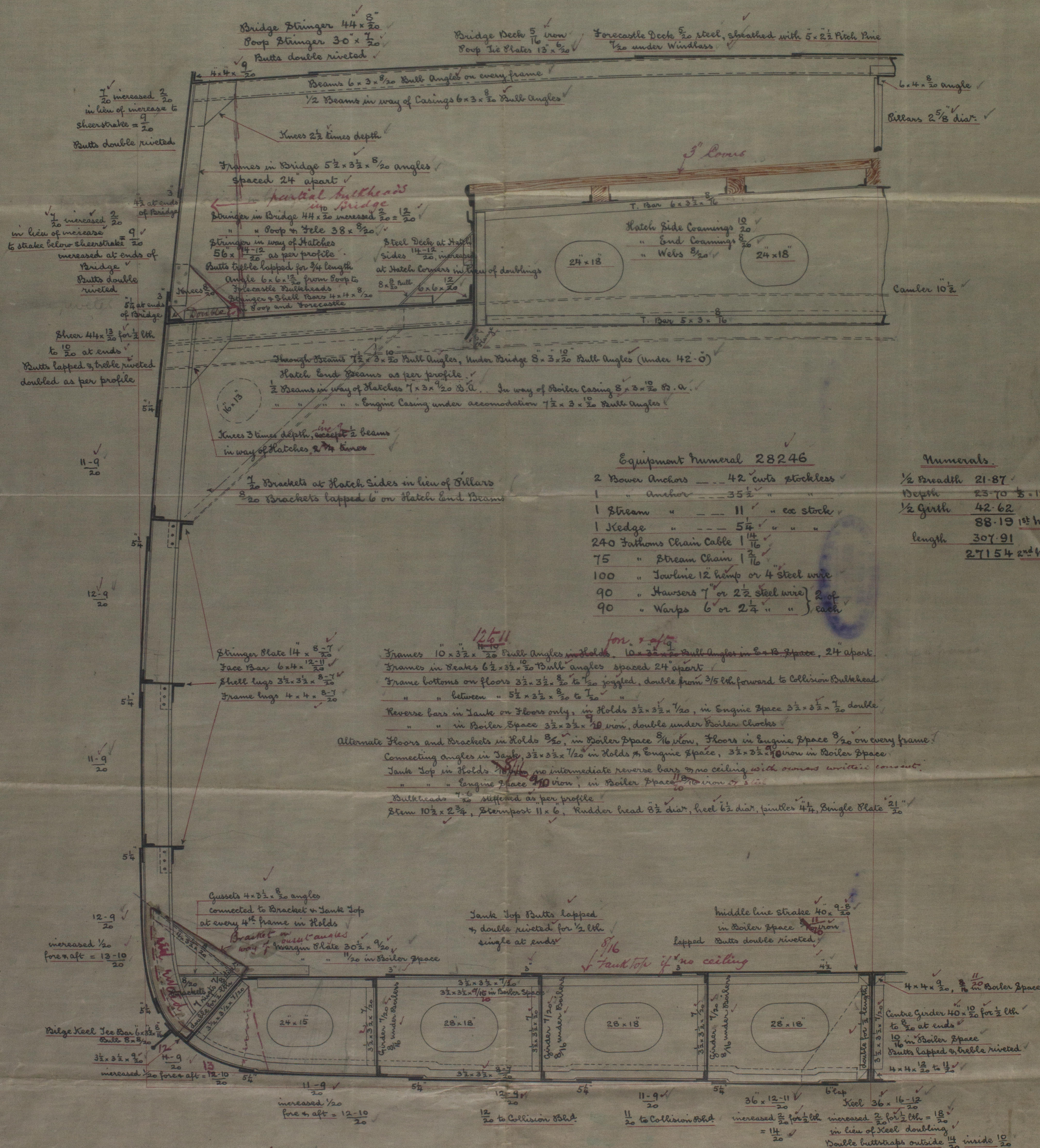
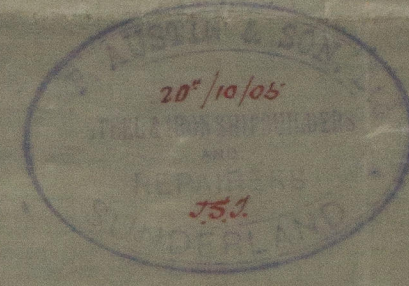
MIDSHIP SECTION — N° 237. —

LENGTH, B.P. — 310'-0"

BREADTH, MLD. — 43'-9"

DEPTH, MOULDED. — 22'-10"

SCALE 1/2" = 1 FOOT.



Equipment numeral 28246

2 Bower Anchors	42 cuts stockless
1 " Anchor	35 1/2 "
1 Stream "	11 " co stock
1 Kedge "	5 1/4 " "
240 Fathoms Chain Cable	1 1/4 "
75 " Stream Chain	1 1/2 "
100 " Trawl line 12 hemp or 4 steel wire	
90 " Hawser 7 or 2 1/2 steel wire	2 of
90 " Warps 6 or 2 1/4 "	each

Numeral

1/2 Breadth	21-87
Depth	23-70 1/2 = 12-99
1/2 Girth	42-62
	88-19 1st Number
Length	307-91
	27154 2nd Number

Butts of Shell Plating lapped and treble riveted
Where outside strakes exceed 46" and inside strakes exceed 54" wide
Butts quadruple riveted for 1/2 length, treble at ends.

28
30.10.05

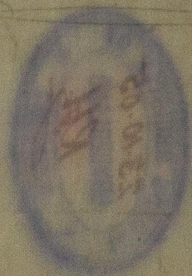


W830-0154 2020

Midships section
for
Messrs S. P. Austin & Son
No 237

S. S. Lady Mary Wight

Order E. No 22944



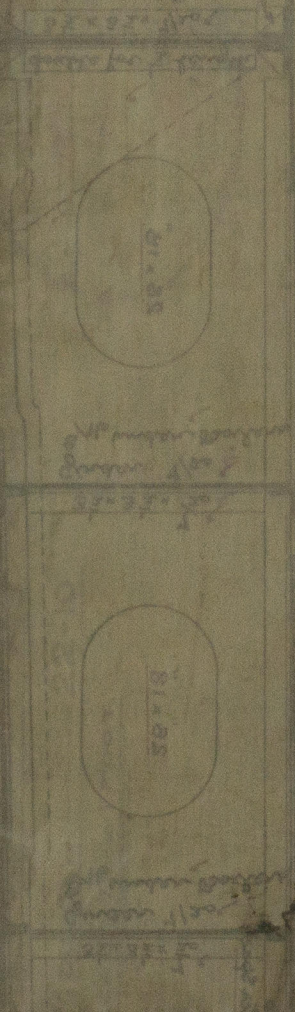
20.01.02

[Handwritten signature]

RETAIN

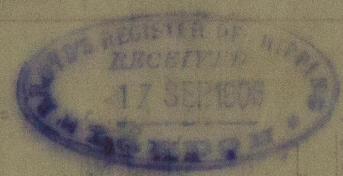
W830-0164

Sample taken 25.11.01 at 10.15
20.11.01 at 10.15
Sample taken 25.11.01 at 10.15
Sample taken 25.11.01 at 10.15



[Handwritten note: "Litho on 11/11/01"]

15.11.01 sample taken at 10.15
15.11.01 sample taken at 10.15
15.11.01 sample taken at 10.15
15.11.01 sample taken at 10.15



15.11.01 sample taken at 10.15
15.11.01 sample taken at 10.15
15.11.01 sample taken at 10.15
15.11.01 sample taken at 10.15



© 2020 Lloyd's Register Foundation