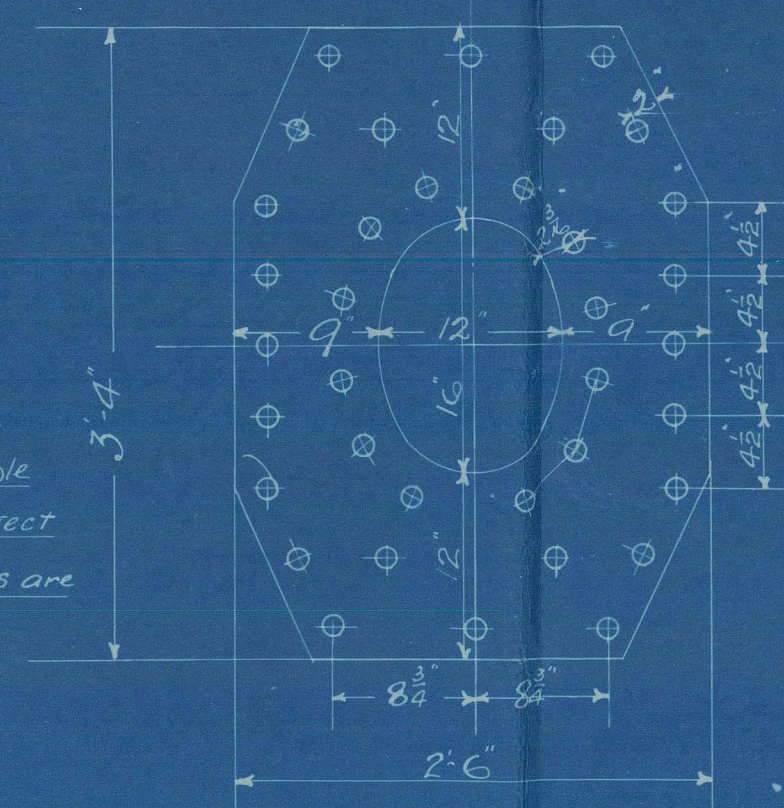


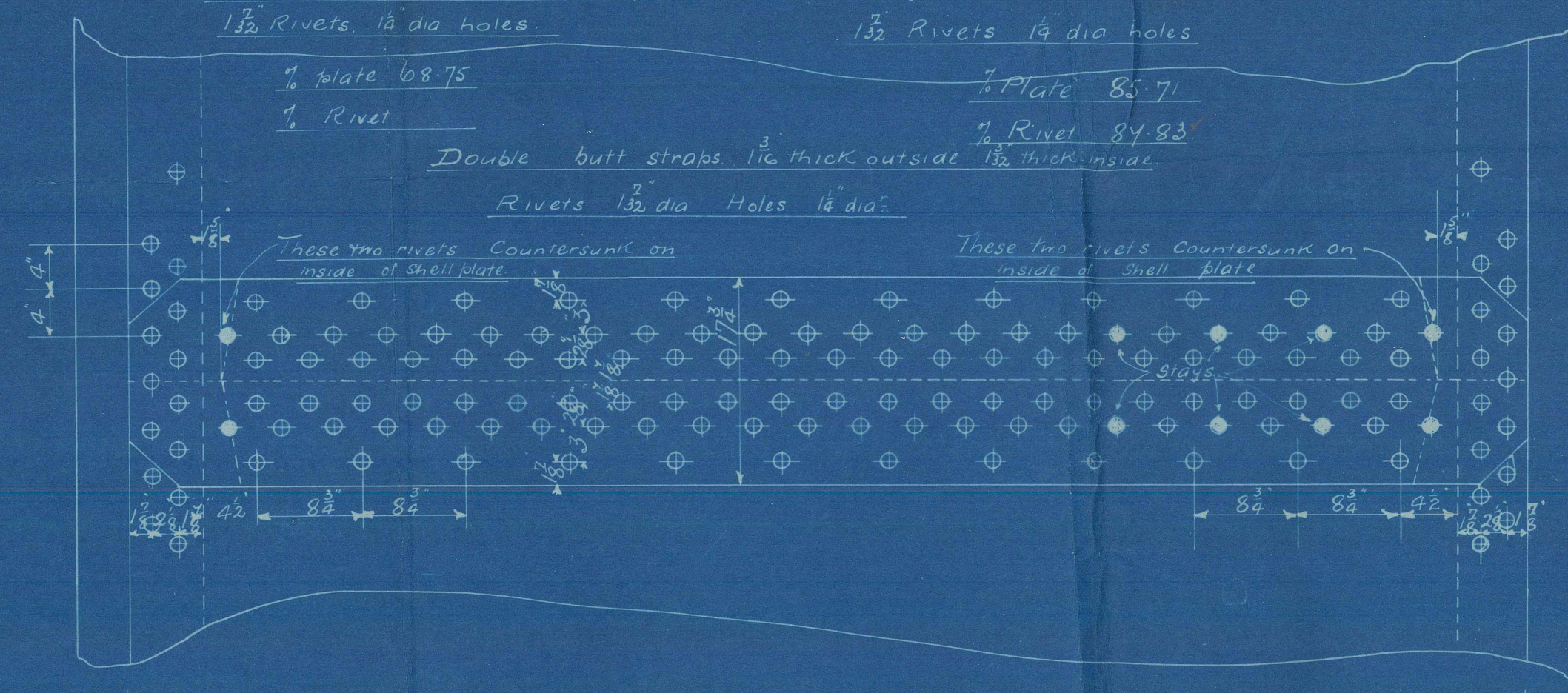
DIAMETER OF BOILER 13'-11 3/8"
 LENGTH OF BOILER 10-7 3/8"
 NUMBER OF TUBES 194
 LENGTH OF TUBES 6'-6 1/2" between plates.
 AREA OF DOOR 3 1/2' AREA THRO TUBES 10'
 HEATING SURFACE IN TUBES 1162
 TOTAL HEATING SURFACE 1511
 FIRE BAR SURFACE 5'0 bars 48'12 1/2"
 DIAMETER OF SAFETY VALVES
 CUBIC FEET OF STEAM SPACE 324 Cu Ft (6' Above C.O.)
 WORKING PRESSURE 200 lbs LLOYDS

1/16" Doubling Plate
 1 1/2" Rivets 1 1/2" Holes
 Fitted outside shell with short
 axis longitudinally



Note! Studs on manhole
 doors are not to project
 thro' nuts when nuts are
 nipped up.

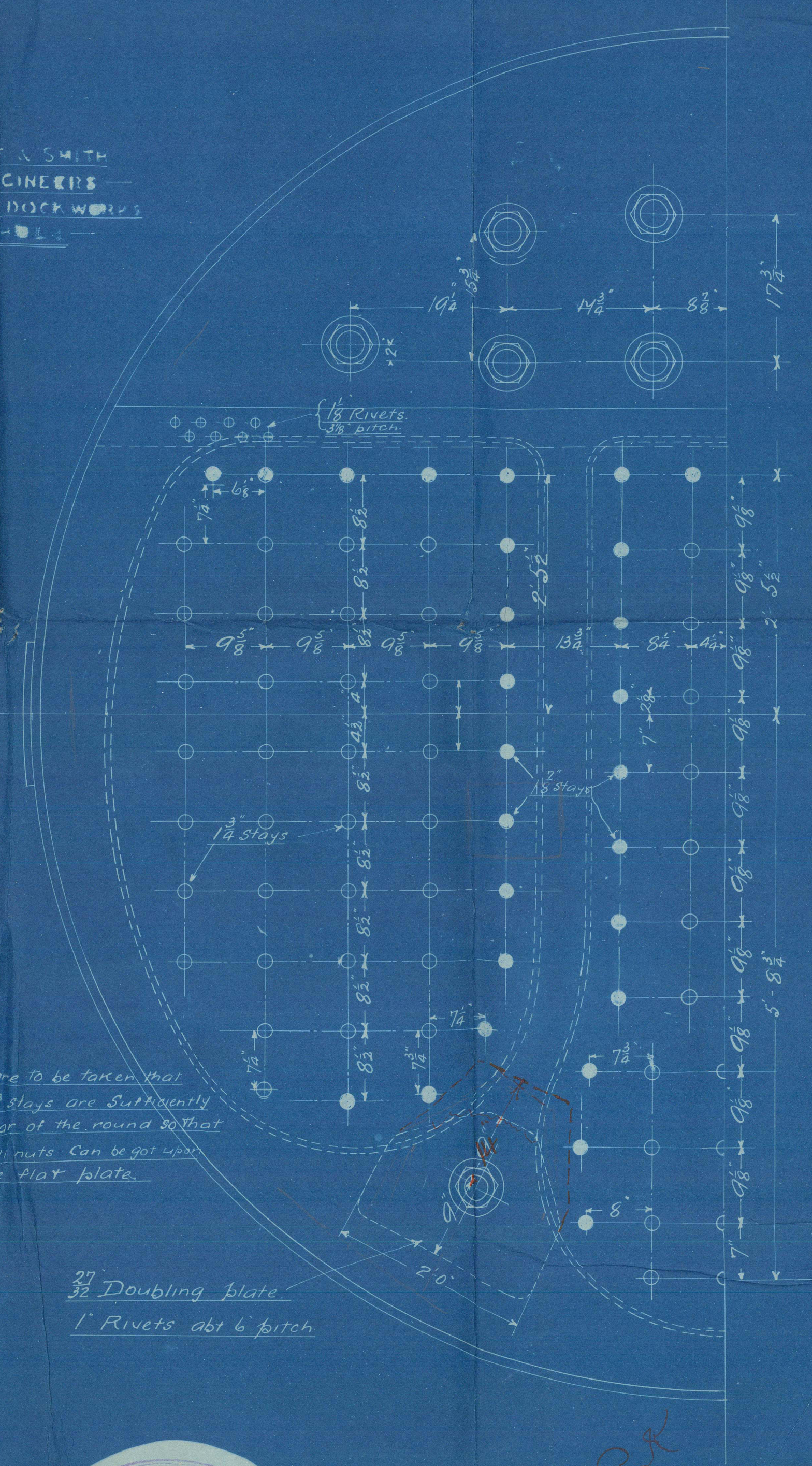
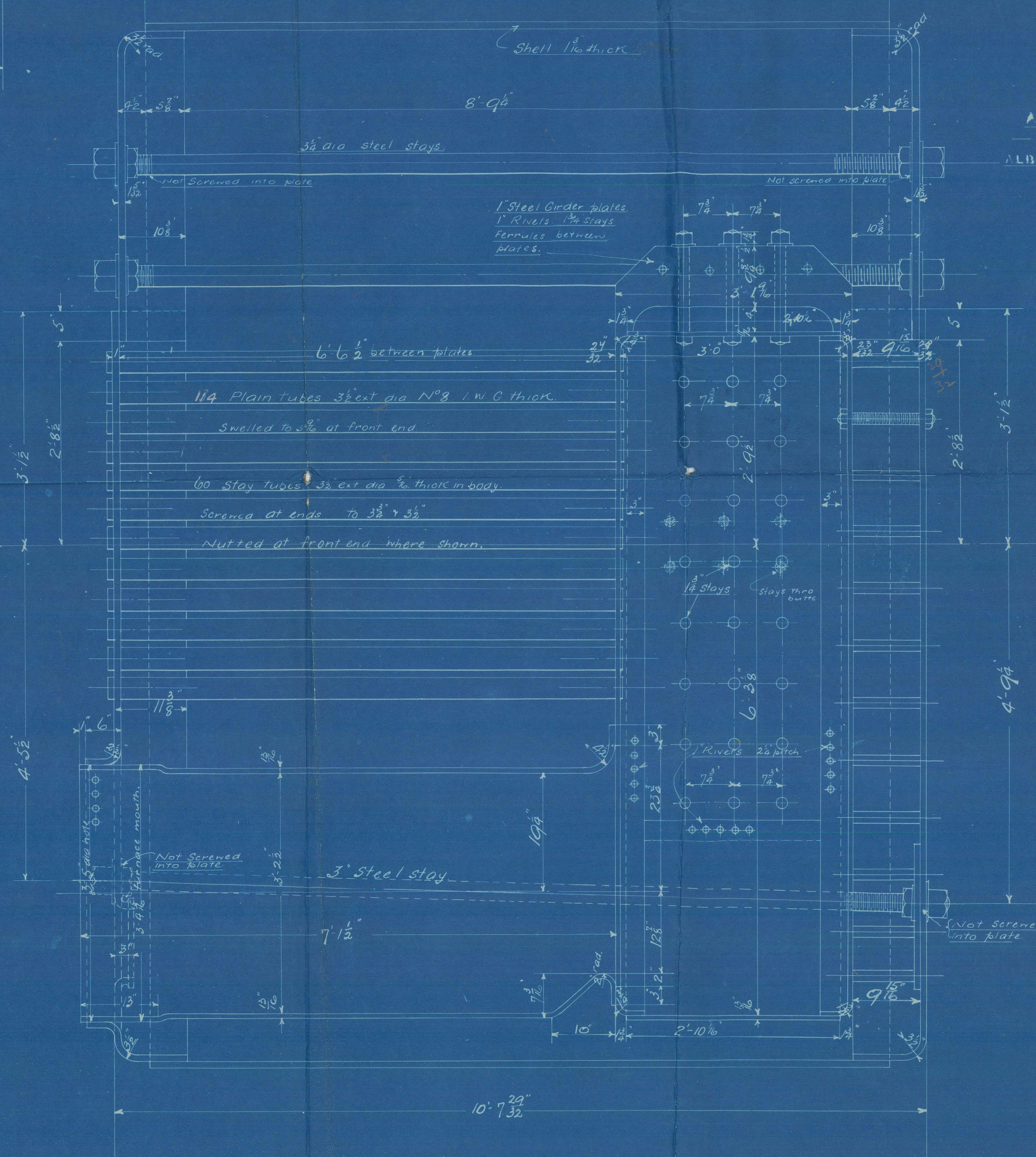
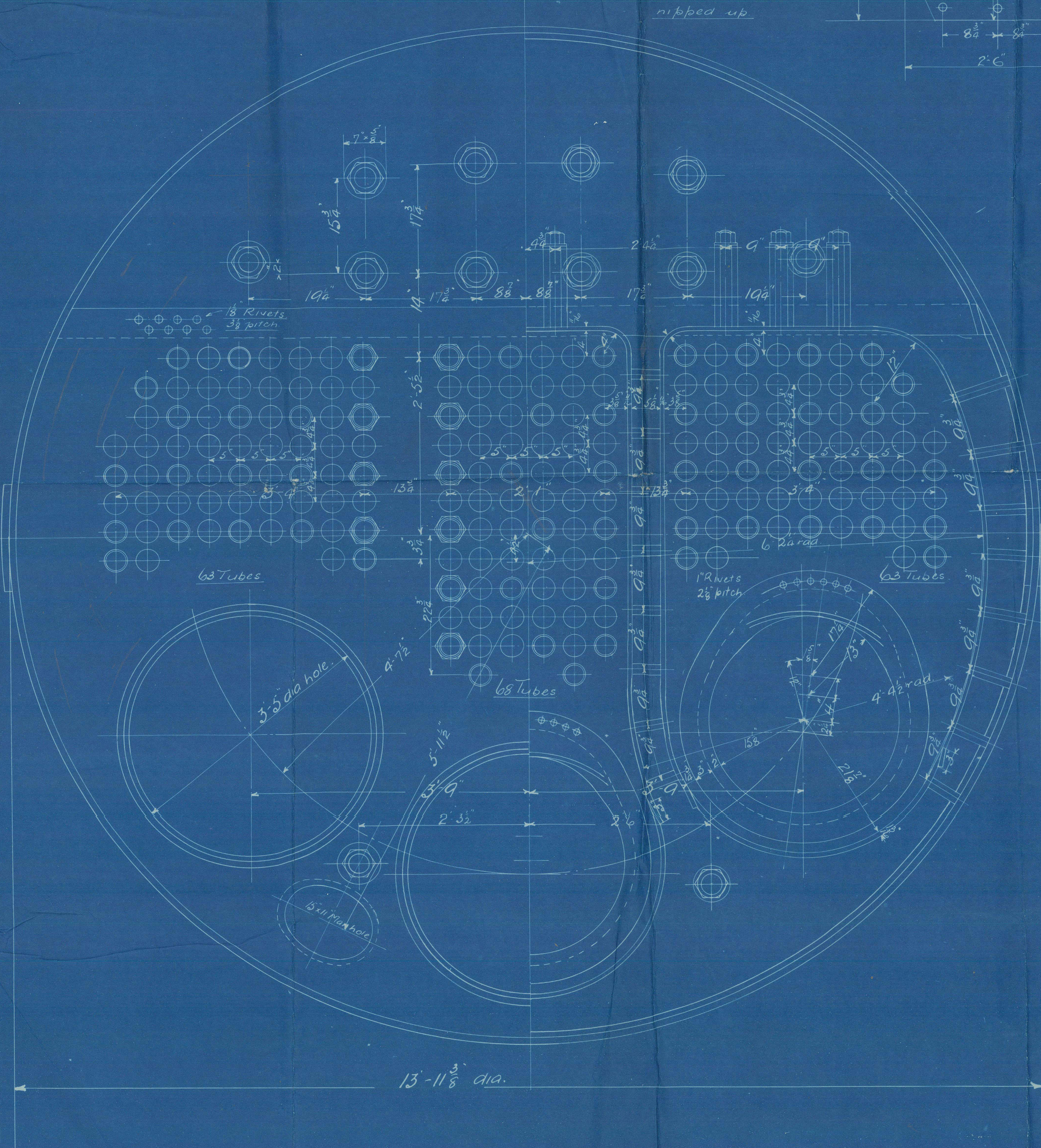
Circumferential Seams 4'8" pitch
 1 1/2" Rivets 1 1/2" dia holes
 Longitudinal Seams 6'4" pitch
 1 1/2" Rivets 1 1/2" dia holes



Note! The plates, rivets, & stays of steel by the Siemens-Martin process.
 All rivet holes drilled throughout the boiler. Those in shell after the plates are bent.
 All flanged plates to be annealed after the plates are bent.
 Stays are not to be welded. Tubes are of iron.
 The tensile strength of the shell plates & butt straps to be between 29,133 lbs per sq. in.
 The Combustion Chamber stays are screwed into both plates and fitted with nut at each
 end except on outside of circular shell.

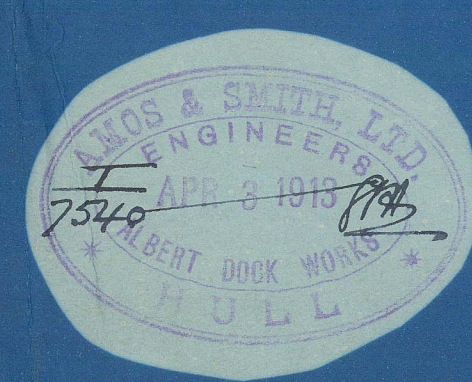
PARTICULARS OF STAYS

Stays	DIA"	Threads per in.	Net area at bottom of thread
Steam space stays	3 1/2"	6	7.247"
Bottom stays	3"	6	6.17"
C.C. Stays	1 1/2"	10	2.3970"
Stays Tubes	3 1/2"	9	2.3640"



AMOS & SMITH
 ENGINEERS
 ALBERT DOCK WORKS

Care to be taken that
 C.C. stays are sufficiently
 clear of the round so that
 full nuts can be got upon
 the flat plate.



APR 24 1914

10421

2 STEEL BOILERS NO 2382-3

TITLE BOILER
 FOR THE...
 DATE 3-14-13
 ORDER 83273
 IF MADE
 1/1 - 1 foot
 W820-00673

W826-0062 $\frac{1}{2}$

From AMOS & SMITH, Ltd., HULL.

Enclosure for

Reser

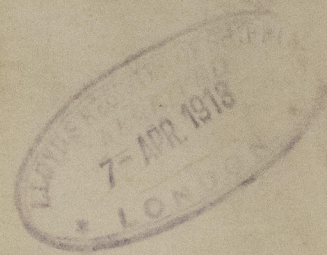
Lloyd's Surveyors

Hull.

Messrs Ames & Smith's

Boiler Nos. 2382-3

Working pressure 200 lbs per sq in.



Mr Lord Londesborough

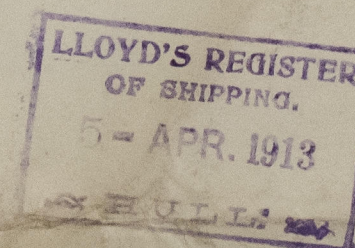
Hull Rpt No: 26953.

Mr L. R. Stevens

Hull Report No: 26994.

RETAIN

W826-0062



© 2021

Lloyd's Register
Foundation

W826-0062