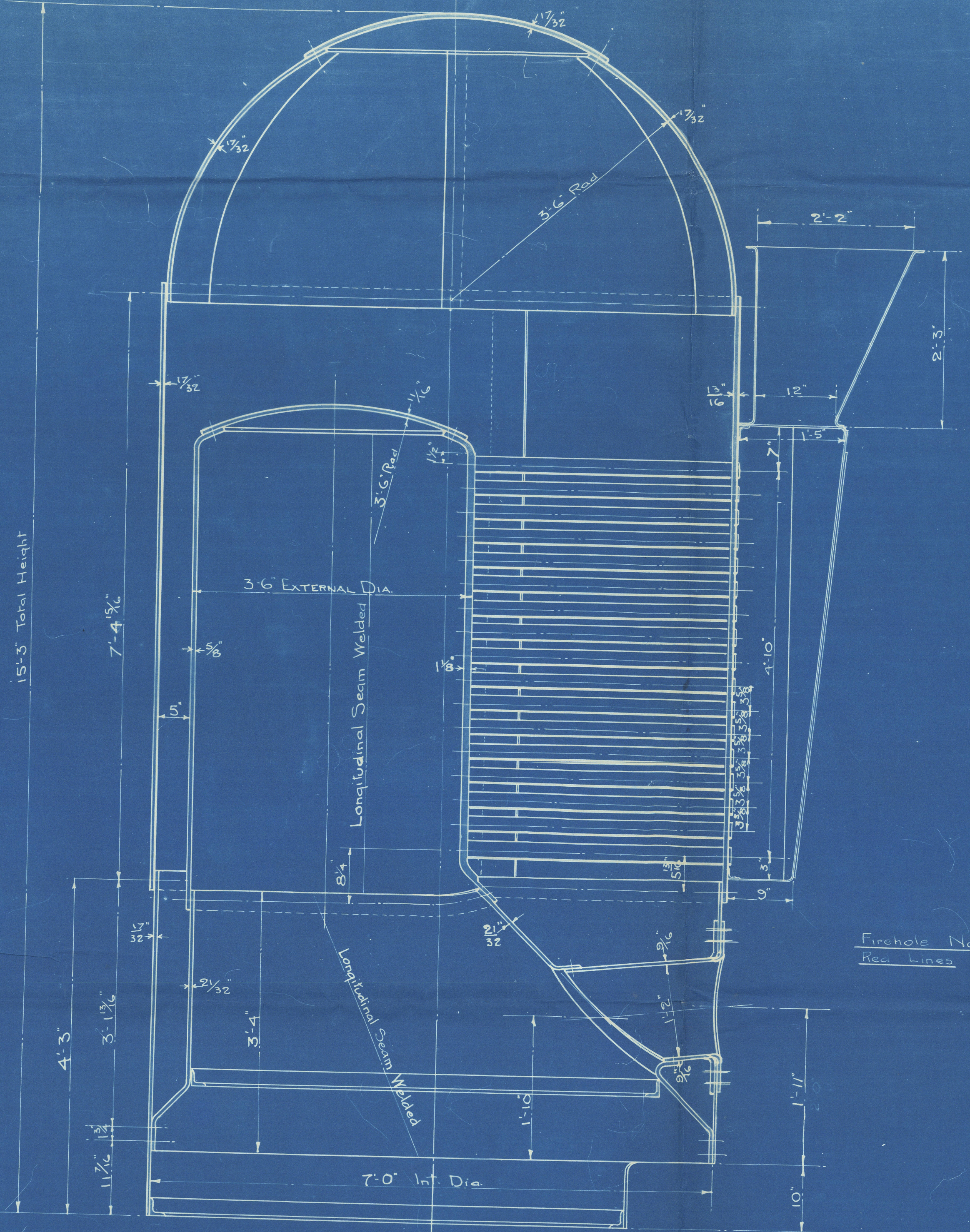
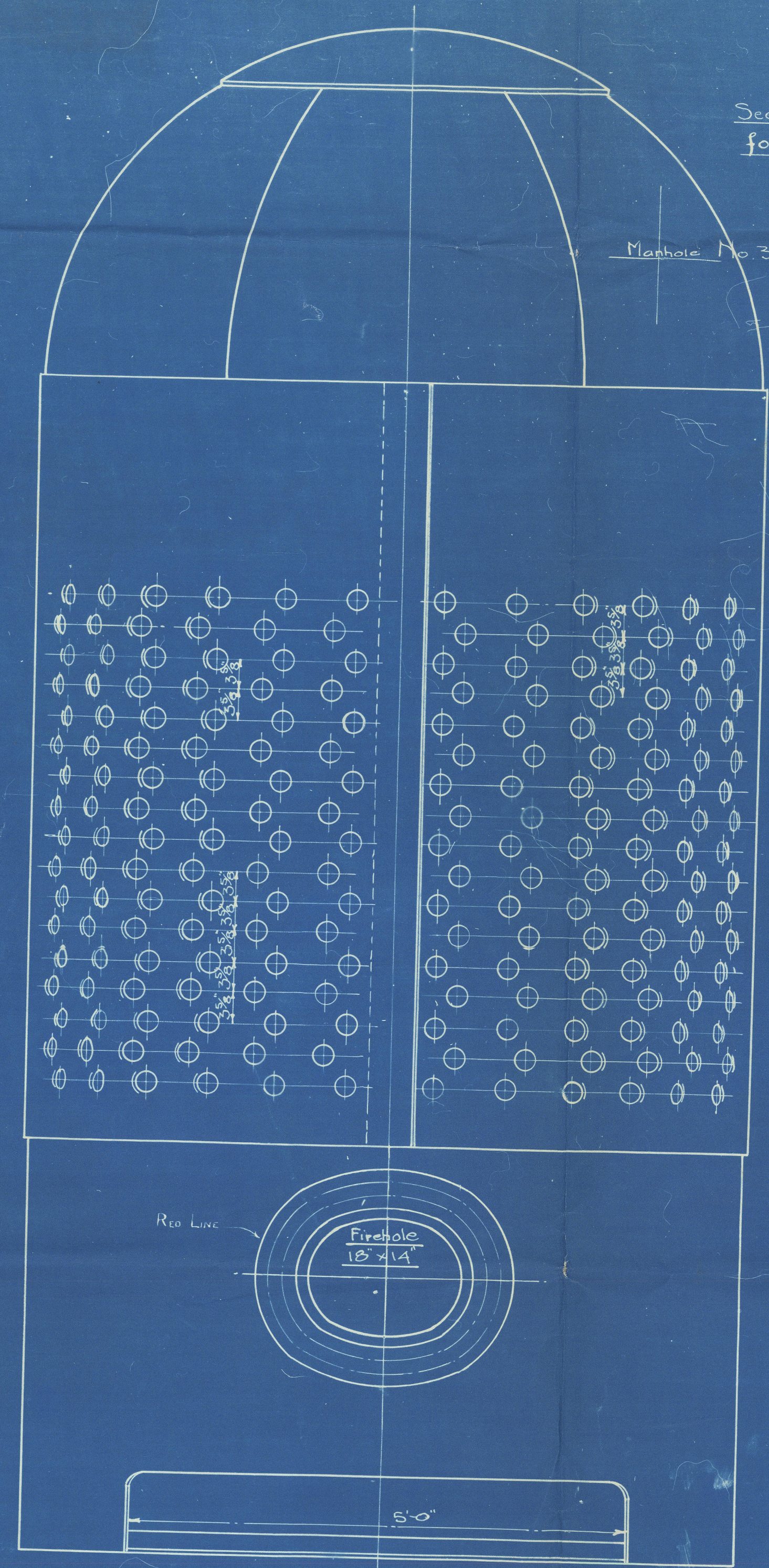


15'-3" Total Height

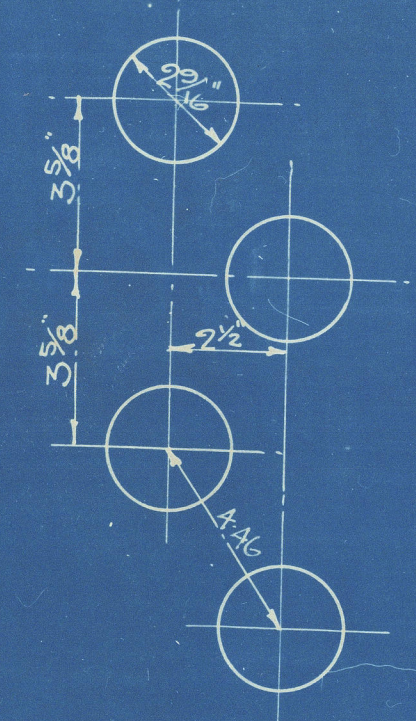


Firehole No 3125 to Red Lines

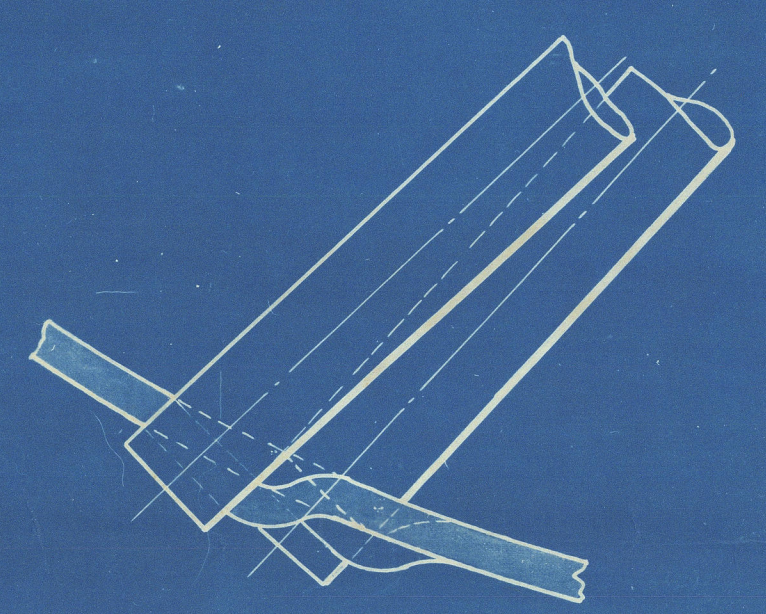


See separate drawing for Manhole No 3125

Manhole No 3123



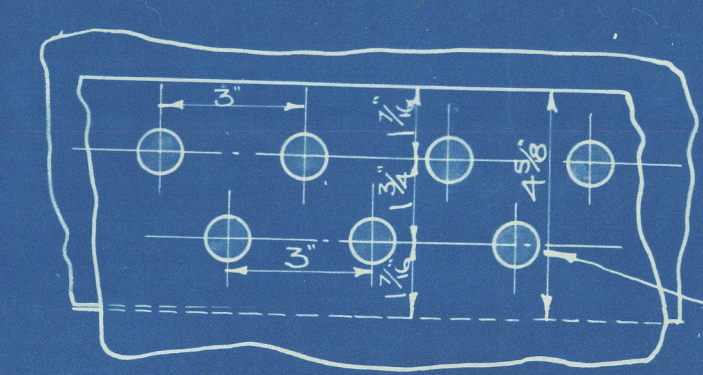
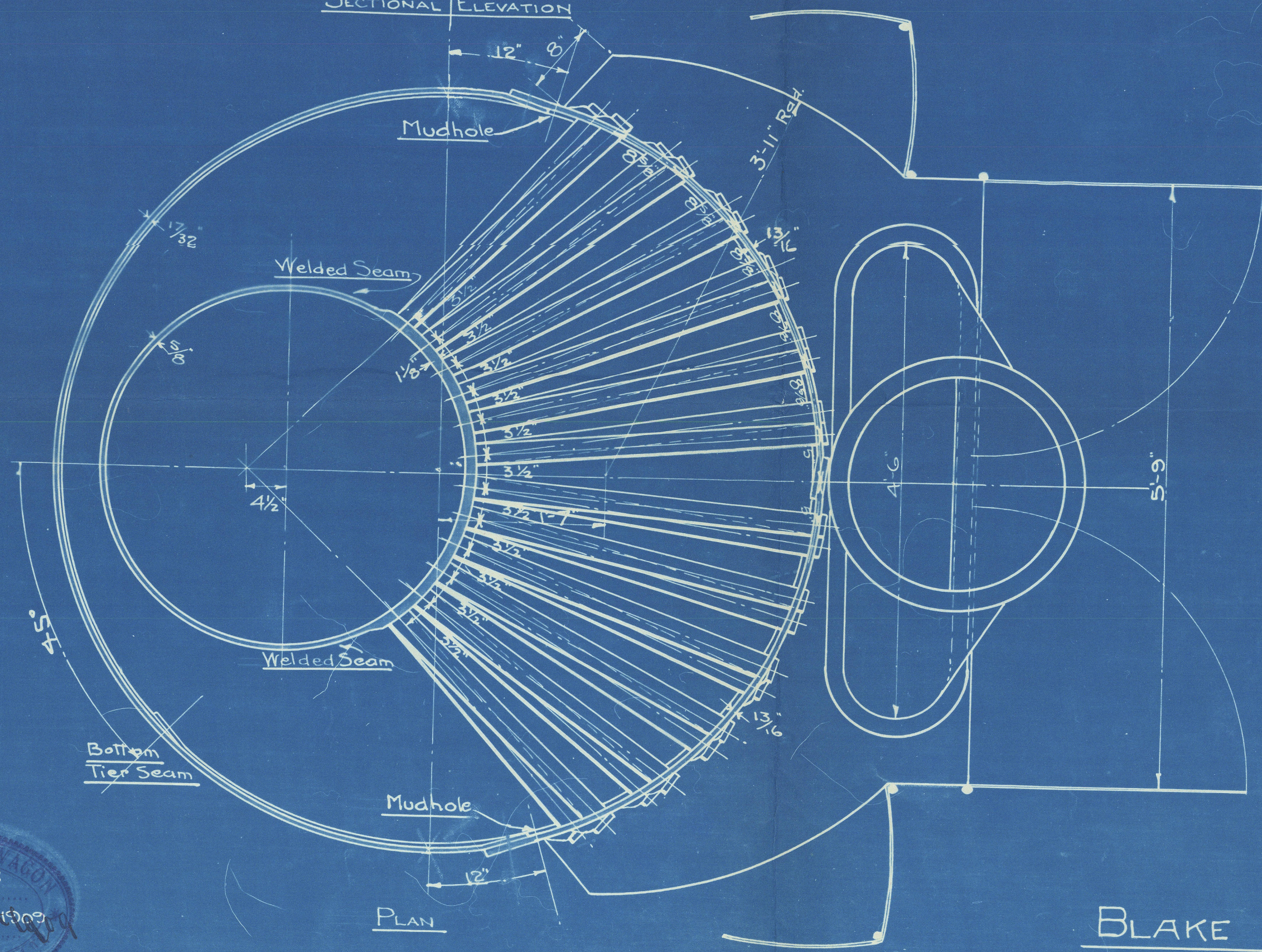
ARRANGEMENT OF TUBES ON SHELL



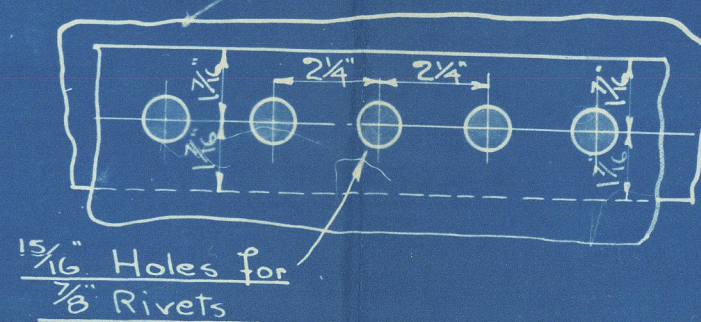
EXTREME WING ROW

SECTIONAL ELEVATION

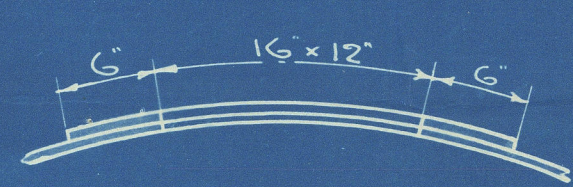
FRONT ELEVATION



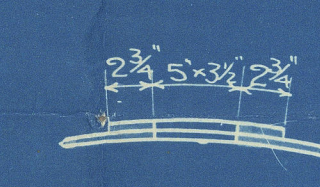
LONGITUDINAL SEAMS



CROWN, CIRCUMFERENTIAL AND INTERNAL SEAMS



MANHOLE DOUBLER 5/8 THICK



MUDHOLE DOUBLER 1/2 THICK

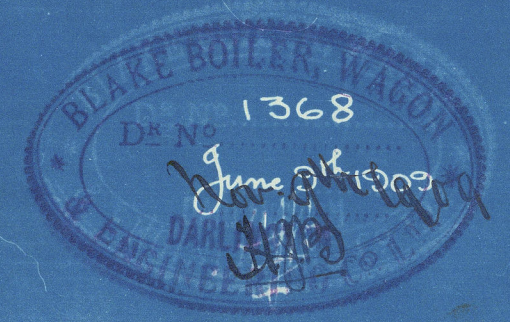
WORKING PRESSURE 100 LBS PER SQ IN.
204 RAIN TUBES 2 1/2" EXT. DIA 9 GAUGE SWELLED 1/16" AT THE FRONT END.
TENSILE STRENGTH OF SHELL PLATES = 28 TO 32 TONS
" " " TUBE " 26 TO 30 "
" " " CROWN " 26 TO 30 "
" " " ALL INTERNAL " 26 TO 30 "
STEEL PLATES AND RIVETS IRON LAP WELDED TUBES
HEATING SURFACE 545 # GRATE SURFACE 25 #
TO LLOYD'S SURVEY



Duplicate of approved plan
11.11.09

BLAKE PATENT BOILER - 15'-3" HIGH x 7'-0" DIA x 100 LBS.
SCALE 1" = 1 FOOT

BOILER NO 3123, 3125, 3141.



Blake Patent Boiler
N^o. 3141

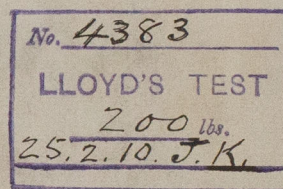
for ~~Stock~~

S. P. Austin & Sons
SS N^o. 253

100 lbs W.P.

Mar. Report to. 6137

Sld. Do. no. 211411



9s Largo

Sld 211411.

RETAIN



© 2020

Lloyd's Register
W825-0020
Foundation