

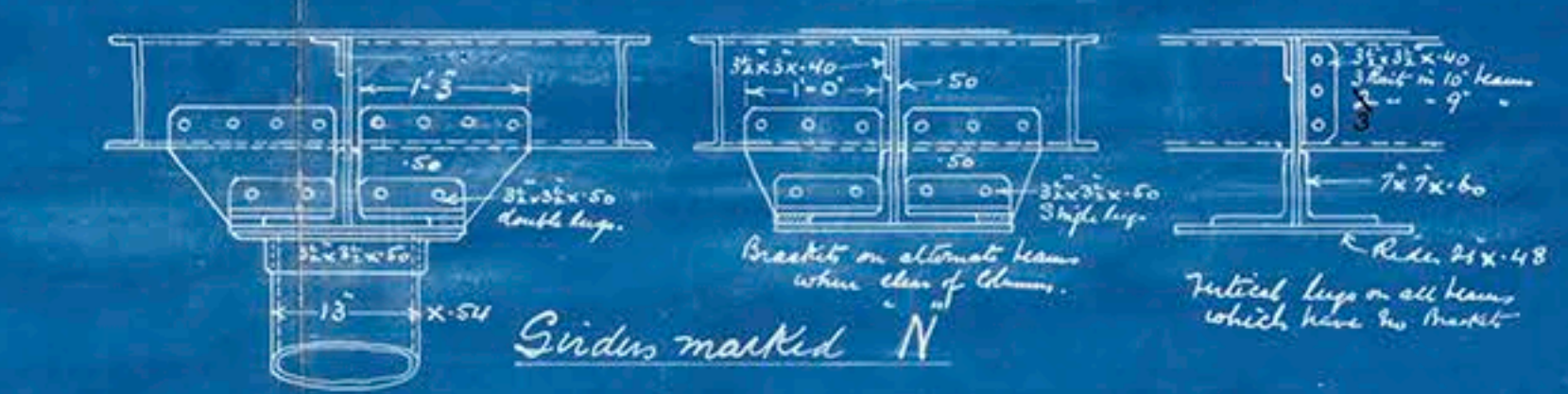
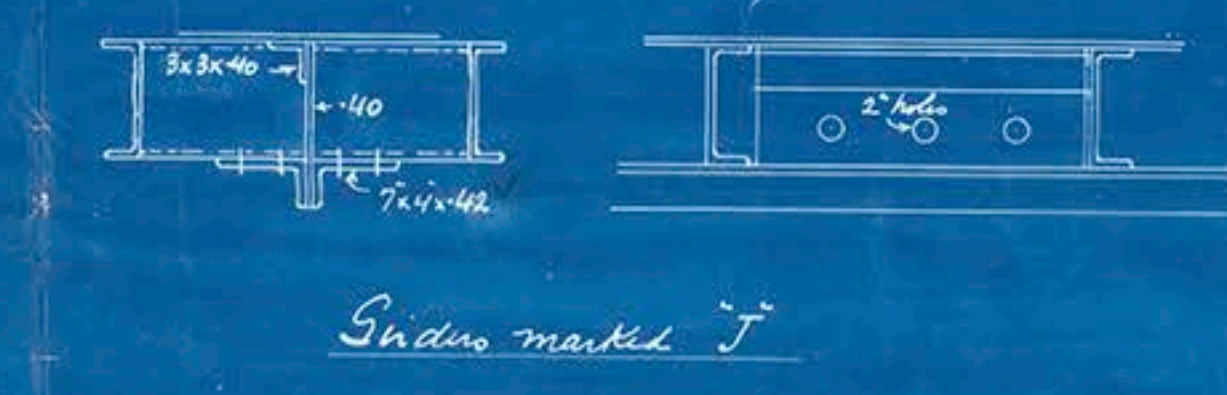
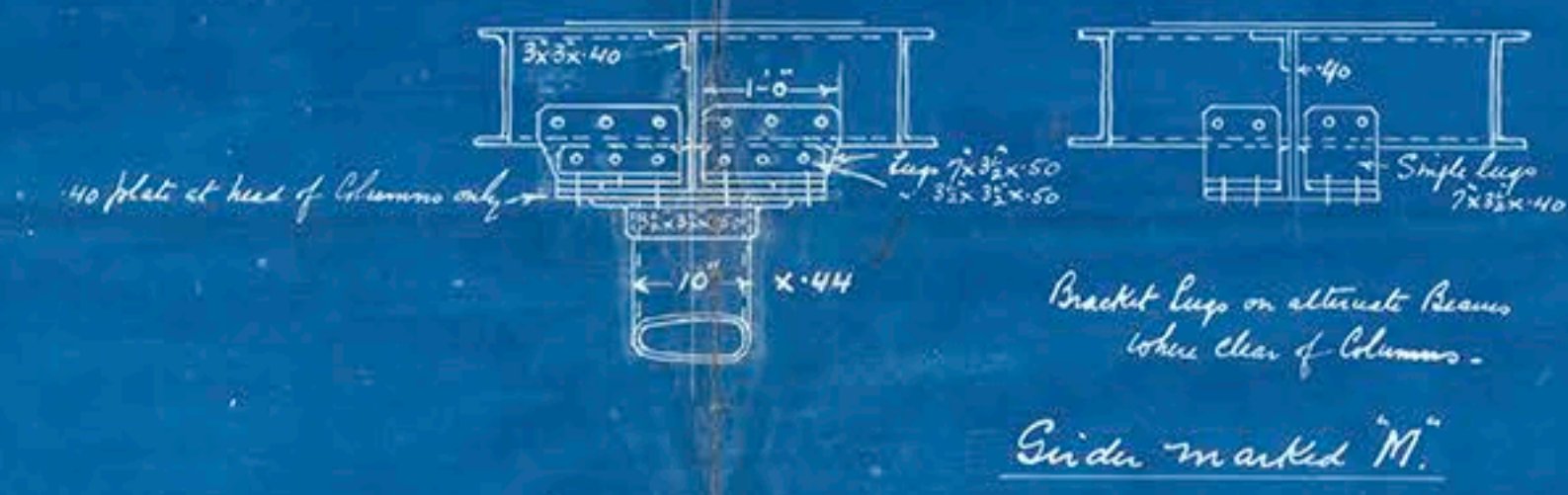
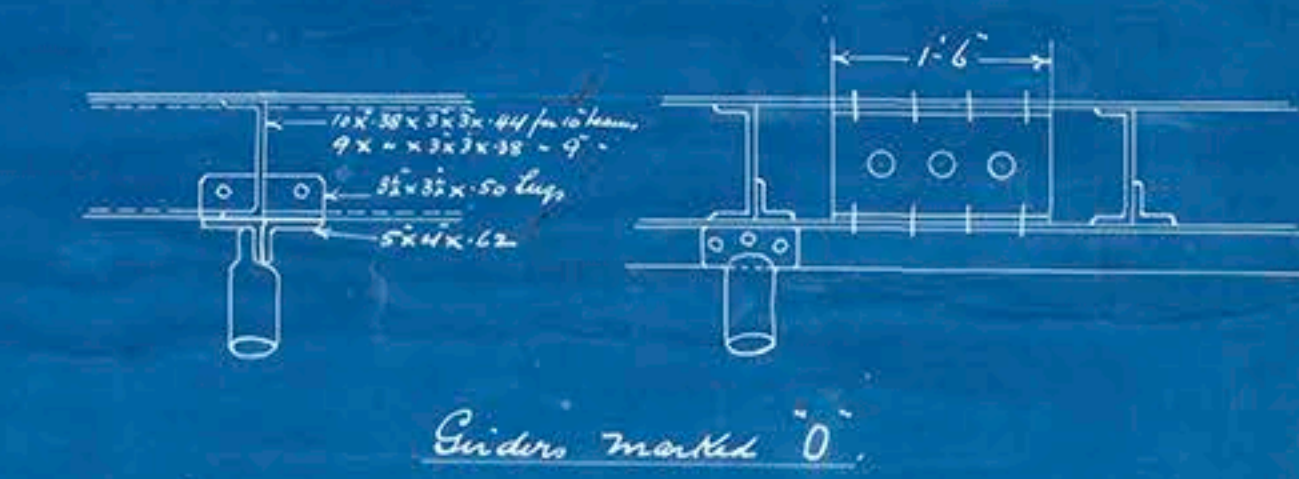
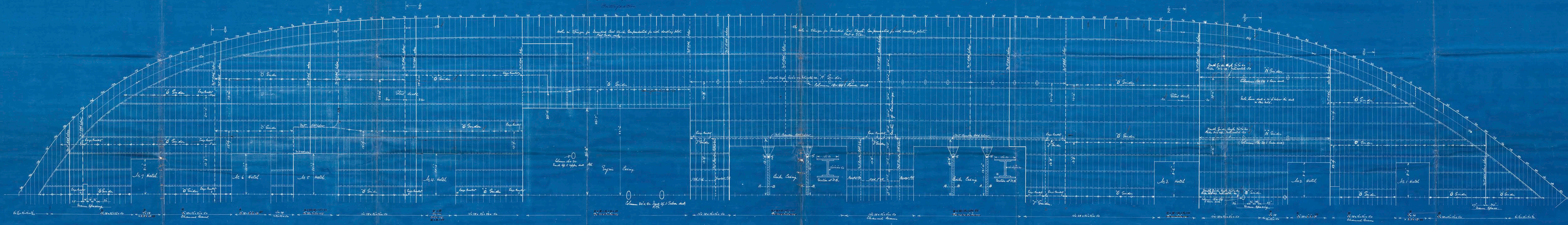
N^o 436. MIDDLE DECK.

SCALE FOR LENGTH $\frac{1}{8}$ " = ONE FOOT : SCALE FOR BREADTH $\frac{1}{4}$ " = ONE FOOT.
SCALE FOR DETAILS 1" = ONE FOOT.

Note: When M.T. B.H.s are "clipped", deck string is in no case to be less than 1/2" thick for 10' from beam ends, and no openings to be made in M.T. B.H.s.

Note: Corners of all hatchways to be supported to spongers satisfactorily.

Corners of large deck openings to be protected to Spongers satisfactorily.



C.B.
3-2-13

Harland & Wolff Lim

Nº 436

SS. Justicia Bel 7791 Plan
Middle Deck Plan



RETAIN



© 2018

Lloyd's Register
Foundation