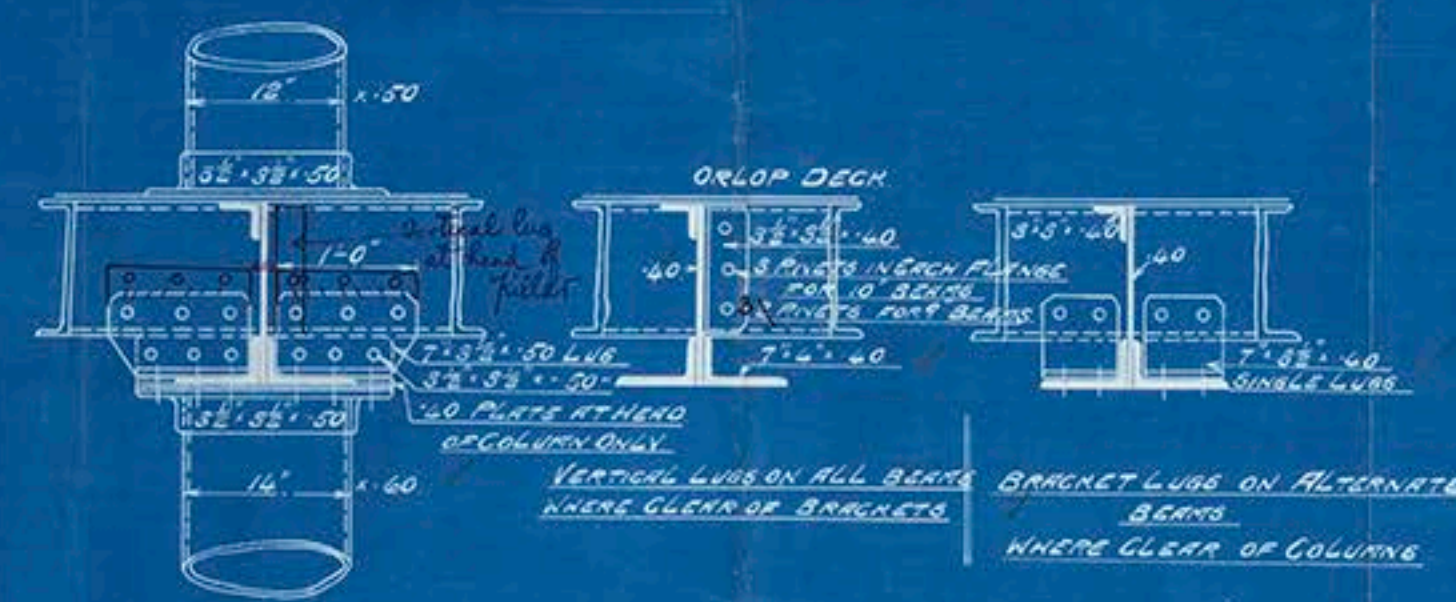
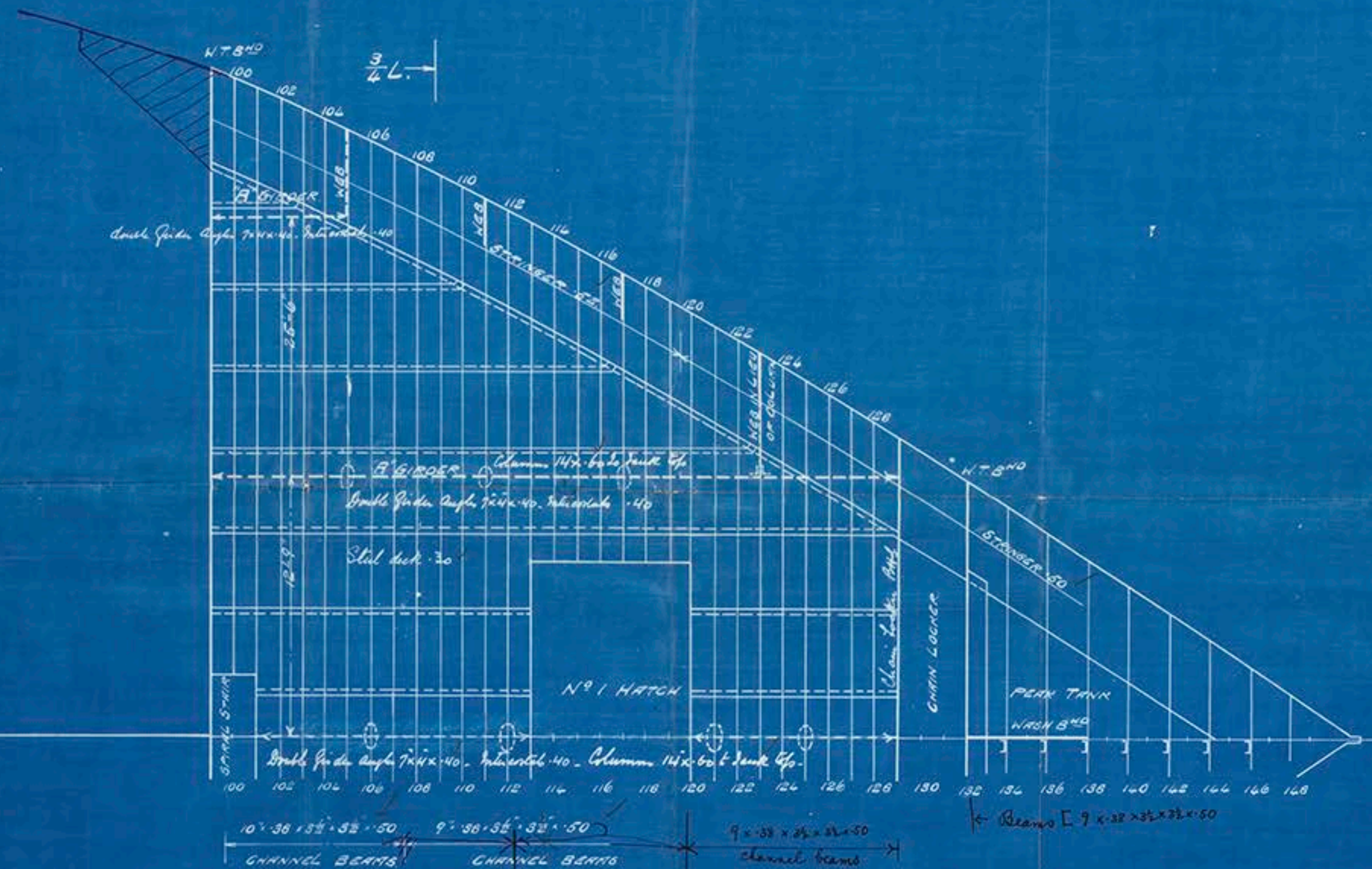


3-2-13.

Nº 436 ORLOP DECK.

SCALE FOR LENGTH $\frac{1}{8}" = \text{ONE FOOT}$ | SCALE FOR BREADTH $\frac{1}{4}" = \text{ONE FOOT}$
SCALE FOR DETAILS $1" = \text{ONE FOOT}$



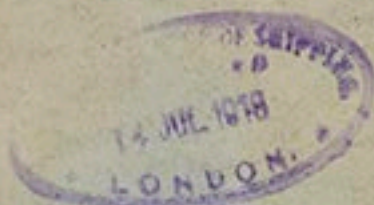
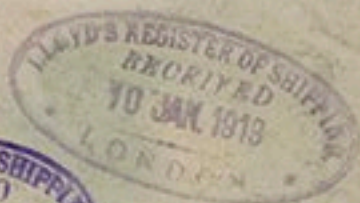
GIRDERS MARKED "A"

C.S.
3-2-13.

Harland & Wolff Ltd

Nº 436

SS. Justicia Bel 7791.
Crop Deck Plan



RETAIN



© 2018

Lloyd's Register
Foundation