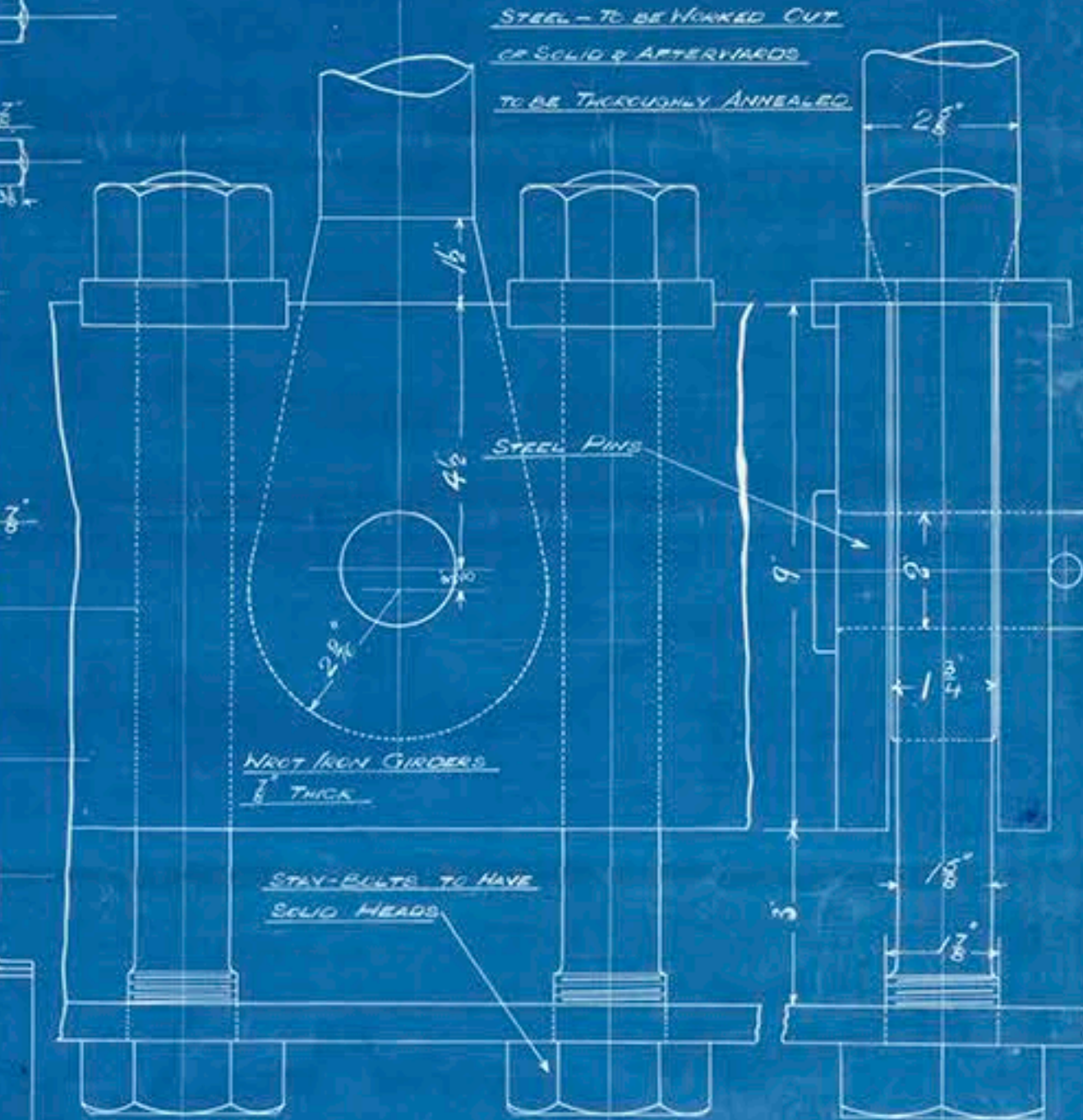


NOTE - STAY TUBES TO BE SCREENED
10 THREADS PER INCH CONTINUOUS
THREAD



RIVETS IN FURNACES
WCOME CHAMBERS TO BE
FINISHED AS SHOWN

PARTICULARS OF RIVETING

<u>SHELL</u>	LONGITUDINAL SEAMS DOUBLE BUTT STRONG RIVETED	
	STRENGTH OF PLATE 84.5%	STRENGTH OF RIVET 89.7%
	CIRCUMFERENTIAL SEAMS DOUBLE RIVETED AT ENDS	
	"	"
	"	"
	"	"
<u>END PLATES</u>	WAGGED DOUBLE RIVETED, 1/4 RIVETS, 3/8" PITCH	
<u>RIVAGES & C/C'S</u>	SINGLE RIVETED 1/2 RIVETS - 2 1/2" PITCH DOUBLE RIVETED 1/2 RIVETS, 3/8" PITCH	
	ALL PLATES & RIVETS STEEL. ALL HOLE DRILLED IN PLACE	
	MINIMUM TENSILE STRENGTH OF SHELL PLATES 3 TONS PER SQ. INCH	
	MAXIMUM	35 TONS
	"	"
	MINIMUM	BUTT STRONG 28 TONS
	MAXIMUM	36 TONS
	MINIMUM	ENDS & C/C ONE 26 TONS
	MAXIMUM	30 TONS
	MINIMUM	"
	"	FINISHES 2 1/2 TONS
	MAXIMUM	30 TONS
	MINIMUM	"
	"	LONGITUDINAL STAY BARS 25 TONS
	MAXIMUM	32 TONS

SCAFFOLD STAY IN CORN CHAIN SPACE
TO BE SCREENED INTO BOTH PLATES &
CALKED OUTSIDE SHELL

1	TERMINAL STRENGTH OF CORN CHAIN STAY BASE	27 TONS
2	"	30 TONS
3	"	"
4	"	"
5	"	"
6	"	"
7	"	"
8	"	"
9	"	"
10	"	"
11	"	"
12	"	"
13	"	"
14	"	"
15	"	"
16	"	"
17	"	"
18	"	"
19	"	"
20	"	"
21	"	"
22	"	"
23	"	"
24	"	"
25	"	"
26	"	"
27	"	"
28	"	"
29	"	"
30	"	"
31	"	"
32	"	"
33	"	"
34	"	"
35	"	"
36	"	"
37	"	"
38	"	"
39	"	"
40	"	"
41	"	"
42	"	"
43	"	"
44	"	"
45	"	"
46	"	"
47	"	"
48	"	"
49	"	"
50	"	"
51	"	"
52	"	"
53	"	"
54	"	"
55	"	"
56	"	"
57	"	"
58	"	"
59	"	"
60	"	"
61	"	"
62	"	"
63	"	"
64	"	"
65	"	"
66	"	"
67	"	"
68	"	"
69	"	"
70	"	"
71	"	"
72	"	"
73	"	"
74	"	"
75	"	"
76	"	"
77	"	"
78	"	"
79	"	"
80	"	"
81	"	"
82	"	"
83	"	"
84	"	"
85	"	"
86	"	"
87	"	"
88	"	"
89	"	"
90	"	"
91	"	"
92	"	"
93	"	"
94	"	"
95	"	"
96	"	"
97	"	"
98	"	"
99	"	"
100	"	"

WORKING PRESSURE 215 LBS. PER SQ. INCH

TEST 430 " " " "

FORCED
~~NATURAL~~ DRAUGHT.

12
10 - OFF.

D. E. MAIN BOILERS. — N^o 436.

SCALE 1" = ONE FOOT

UNDER SURVEY OF BOARD OF TRADE.

LLOYDS

8-5-12
628

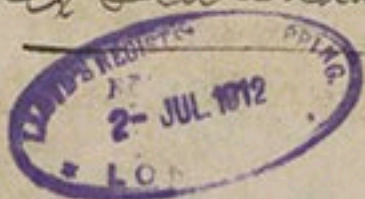
Belfast

Harland & Wolff L^d

S.S. 436 S.S. Justitia

W. End. Baileys Bel. 7791

S.S. [Justitia]
ex Rotterdam



© 2018

Lloyd's Register
Foundation