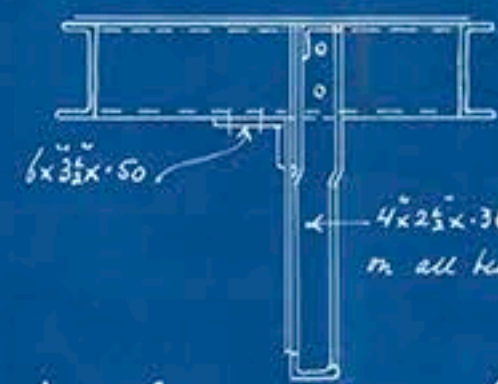


Nº 436.

## UPPER PROMENADE DECK.

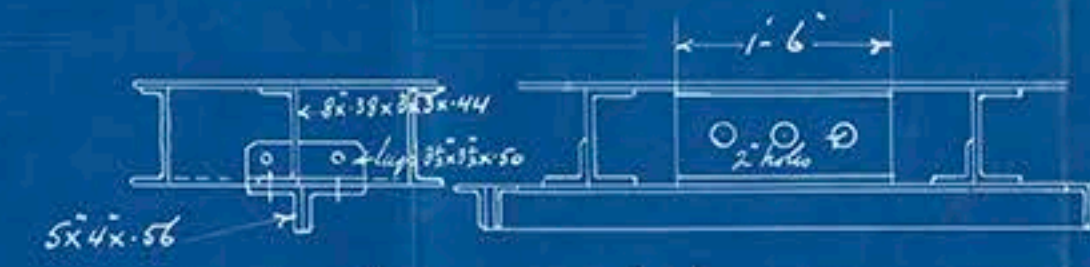
SCALE FOR LENGTH  $\frac{1}{8}'' = \text{ONE FOOT}$  | SCALE FOR DETAILS  $1'' = \text{ONE FOOT}$   
SCALE FOR BREADTH  $\frac{1}{4}'' = \text{ONE FOOT}$



Covers of Hatcher, and other large openings  
are fitted with efficient doubling plates - or long overlaps,  
as may be found most suitable.

4x2½x.36 Bulls angle  
on all beams which have no throatship protection.

Section showing slides along inside line of Limestone Bthls



Slides marked Y. 2.



Sindes marked "Z.2".

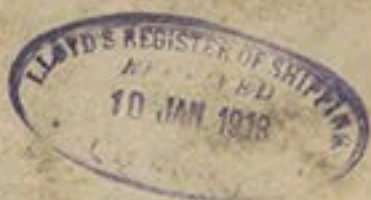
C.B.  
3.2.13



Harland & Wolff Lim

Nº 436

S.S. Justicia. Bel. 7791.  
Upper Promenade Deck Plan



© 2018

Lloyd's Register  
Foundation