

DIA. OF BOILER 11'0" ext.
 LENGTH OF DO 9'4" ext.
 NUMBER OF TUBES 130
 LENGTH OF DO 5'9" between plates
 DIA. OF DO 3 1/2" AREA THREE TUBES 5.6 sq. ft.
 HEATING SURFACE IN TUBES 636 sq. ft.
 TOTAL HEATING SURFACE 840 sq. ft.
 FIRE BAR SURFACE 4 ft bars. 24.33 sq. ft.
 DIA. OF SAFETY VALVES 2"
 CUBIC FEET OF STEAM SPACE 158
 WORKING PRESSURE 200 lbs. LLOYDS

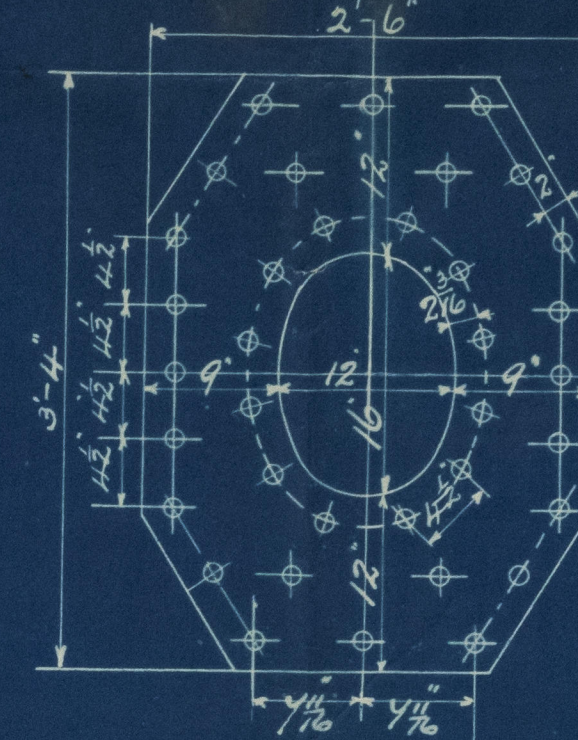
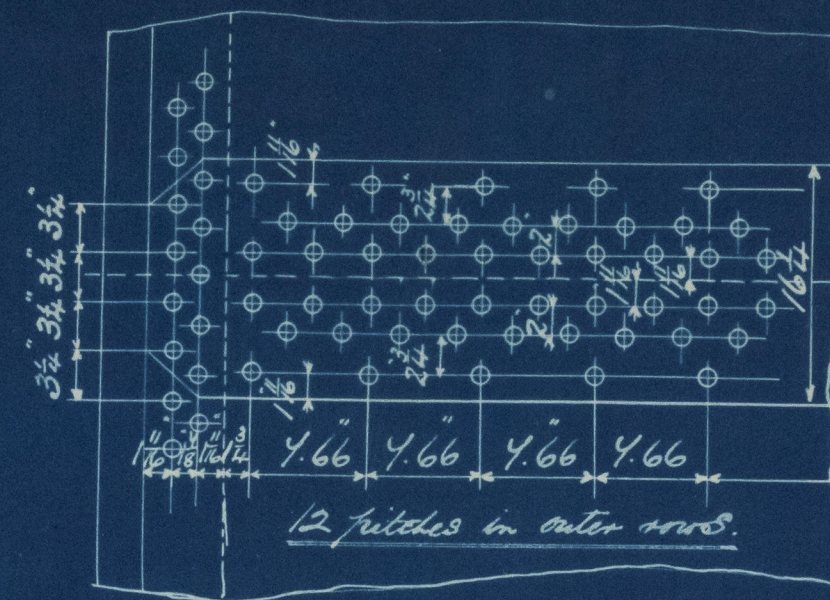
Circumferential Seams 3/4" pitch
 % plate 65.4 % rivets 52
 Longitudinal Seams 7/16" pitch
 % plate 85.3 % rivets 96.5
 Double butt Straps 1" thick 1 1/2" rivets 1 1/8" holes

Doubling plate 1" thick
 1 1/2" rivets 1 1/8" holes
 Fitted outside shell with short
 axis longitudinally

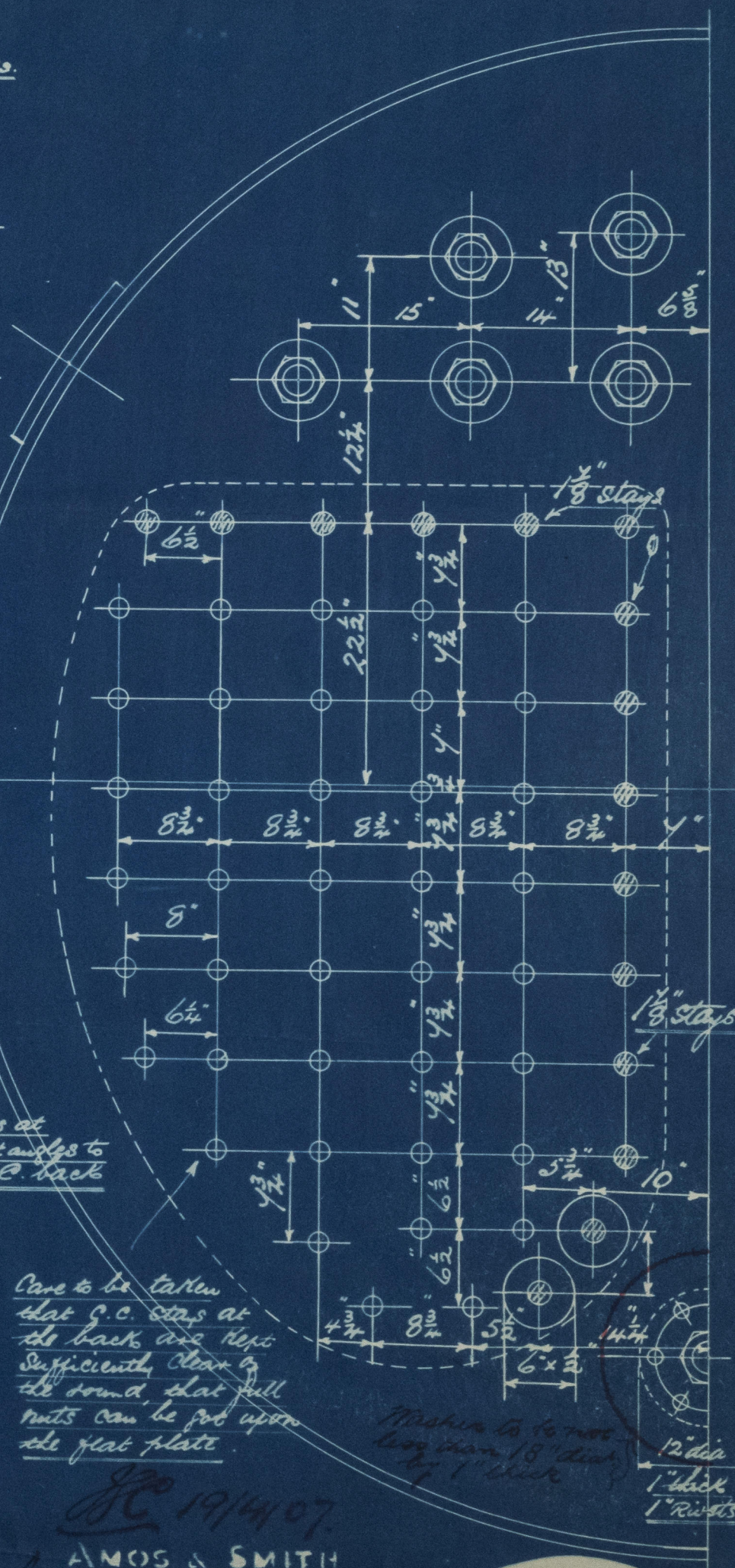
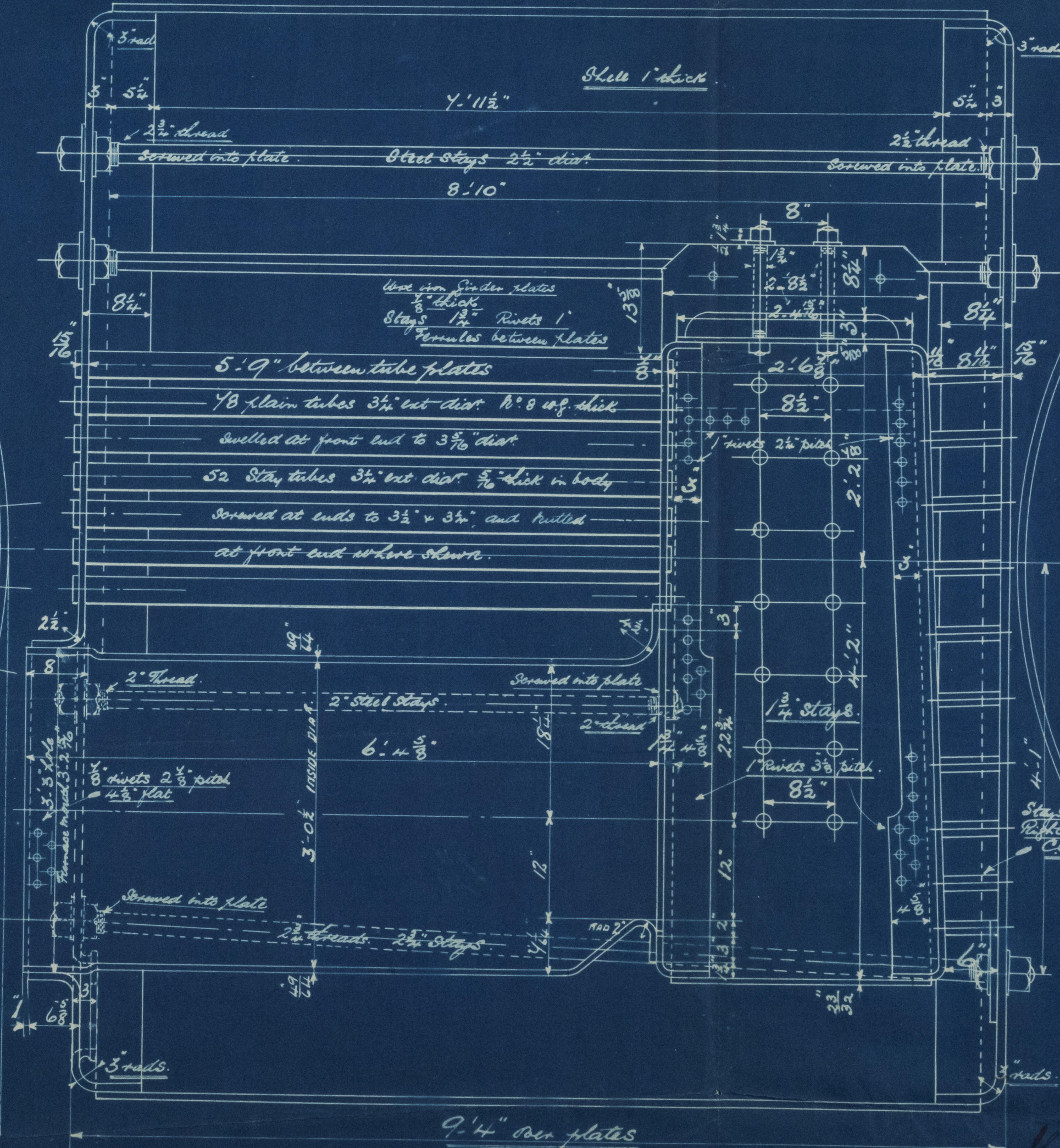
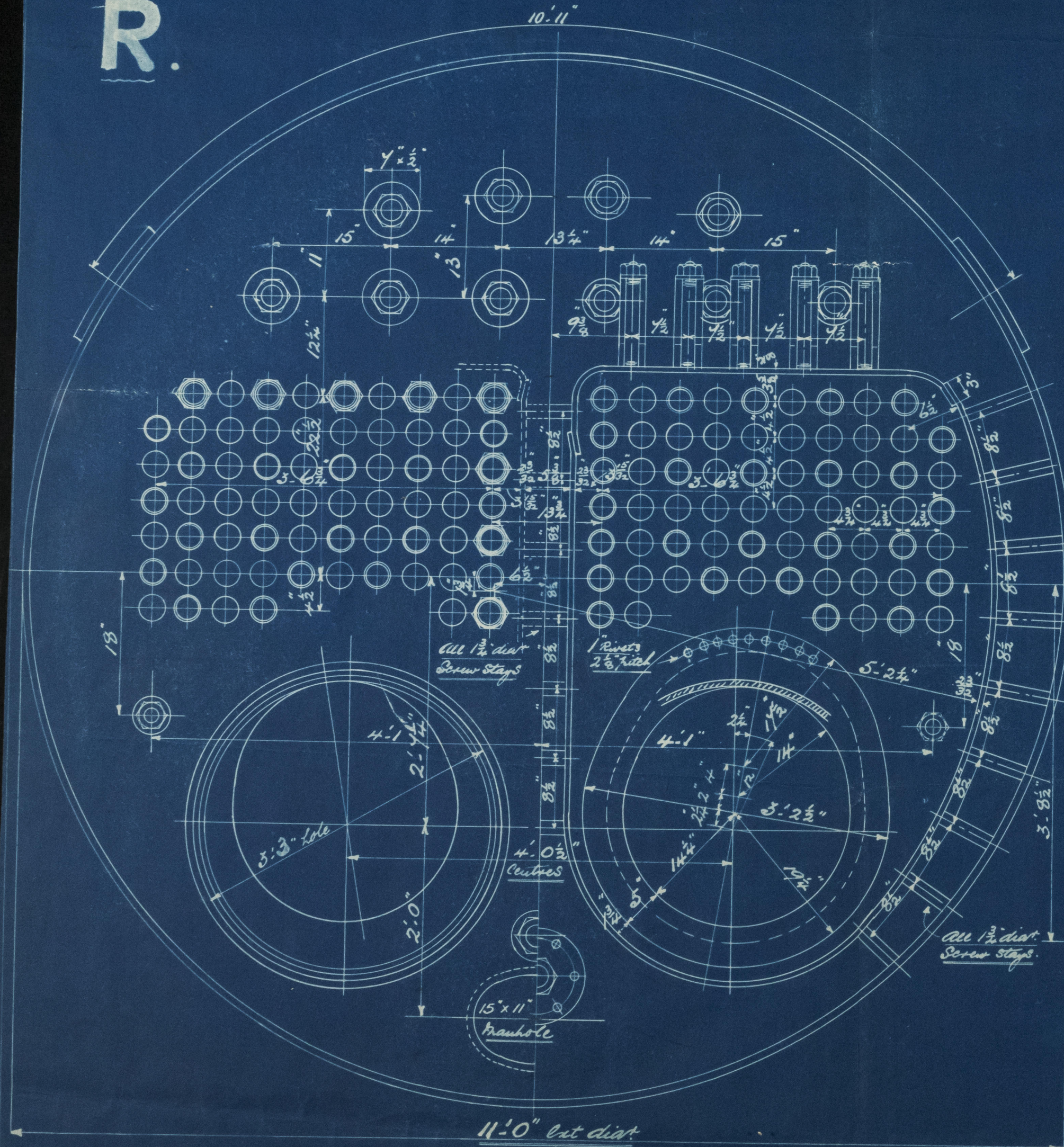
The plates, rivets & stays of steel by the Siemens Martin process
 All rivet holes drilled throughout the boiler, those in shell
 after the plates are bent. Stays are not to be welded.
 Tubes are of iron. The tensile strength of the shell plates
 to be between 28 & 32 tons per sq. inch.
 The Combustion Chamber stays are screwed into both plates
 and fitted with a nut at each end. Washers on outside
 of shell only. None inside C.C.

Particulars of Stays

Stays	Diat	No. of Stays per sq.	St. area at bottom of thread
Steam Space Stays	2 1/2"	6	4.108 sq. in.
Tube plate	2"	8	2.66 "
Bottom	2 1/2"	6	5.055 "
Stays tubes	3 1/2"	9	2.144 "
C.C. Stays	1 1/2"	10	2.066 "
	1 3/8"	10	2.397 "



R.



Care to be taken
 that C.C. stays at
 the back are kept
 sufficiently clear of
 the round flat full
 nuts can be put upon
 the flat plate

19/4/07

AMOS & SMITH

ENGINEERS

ALBERT DOCK

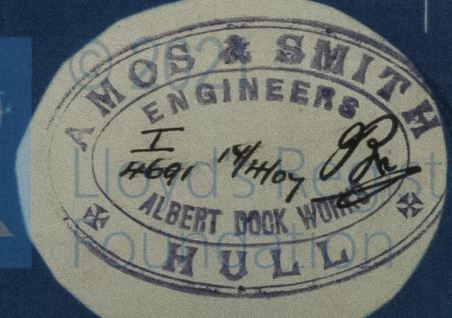
HULL

March 14, 1904

1998

STEEL BOILER N° 1238 - 9

Scale 1" = 1 foot



© 2021
From AMOS & SMITH, HULL.

Enclosure for

Lloyd's Surveyors

Hull

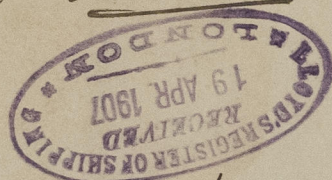
W818-0128($\frac{1}{2}$)

Amos & Smith, Hull

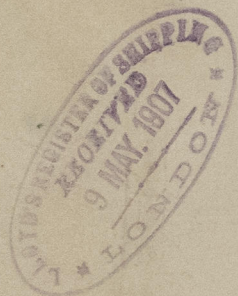
- Bls No. 1238 & 9 -

2000

1238 = O'hullo.



Hull Report No. 19424



of Jago

Hull Report No.

RETAIN

W818-0128



© 2021

Lloyd's Register
Foundation