

Steel-Donkey-Boiler for ship 233-234.

Job. C. Tacklenborg A. G.

to be classed 100 A₁ steel.

Bremarhaven - Gestemünde.

| | |
|------------------|-----------------------|
| Heating surface | 1054 square feet |
| Grate | 45 " " |
| Working pressure | 121 lbs. per sq. inch |
| Hydram. | 192 " " " " |

Material: Siemens-Martin-Steel.

Shell plating and girders: Tensile strength 26,7 ÷ 30,5 tons per sq. inch

Elongation 22,5 per cent.

All the other material: Tensile strength $24,1 \div 27,9$ tons per sq. inch

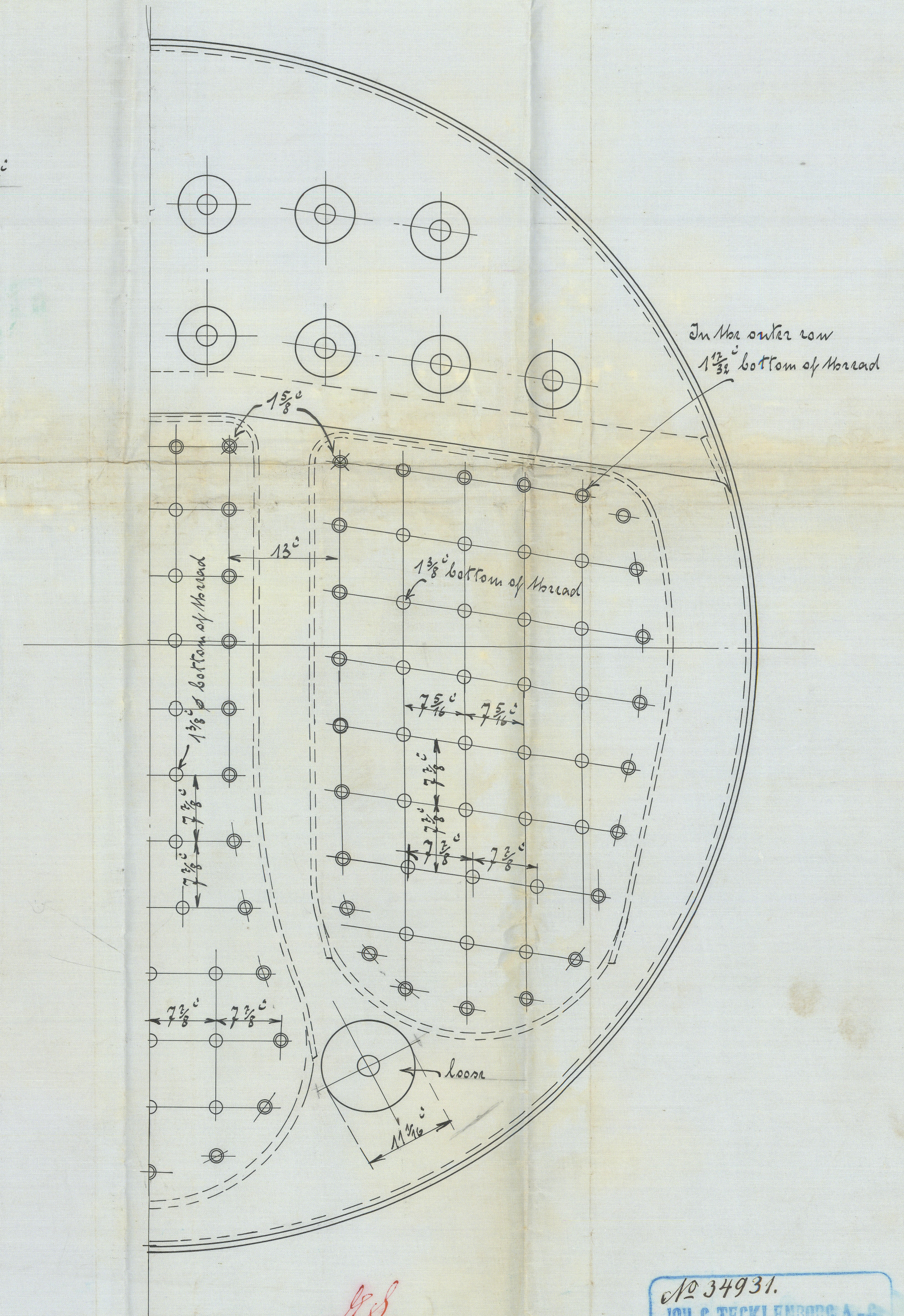
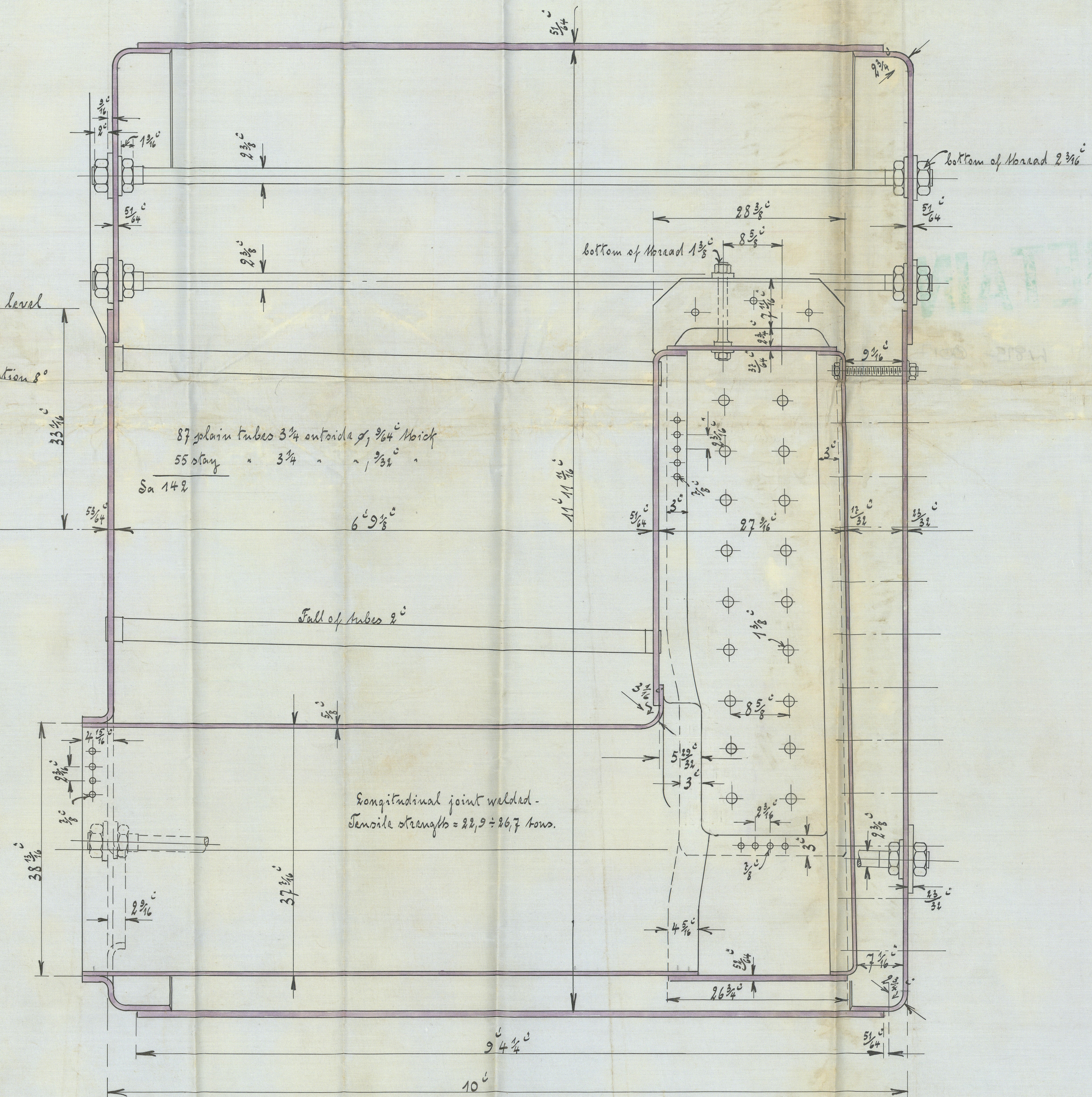
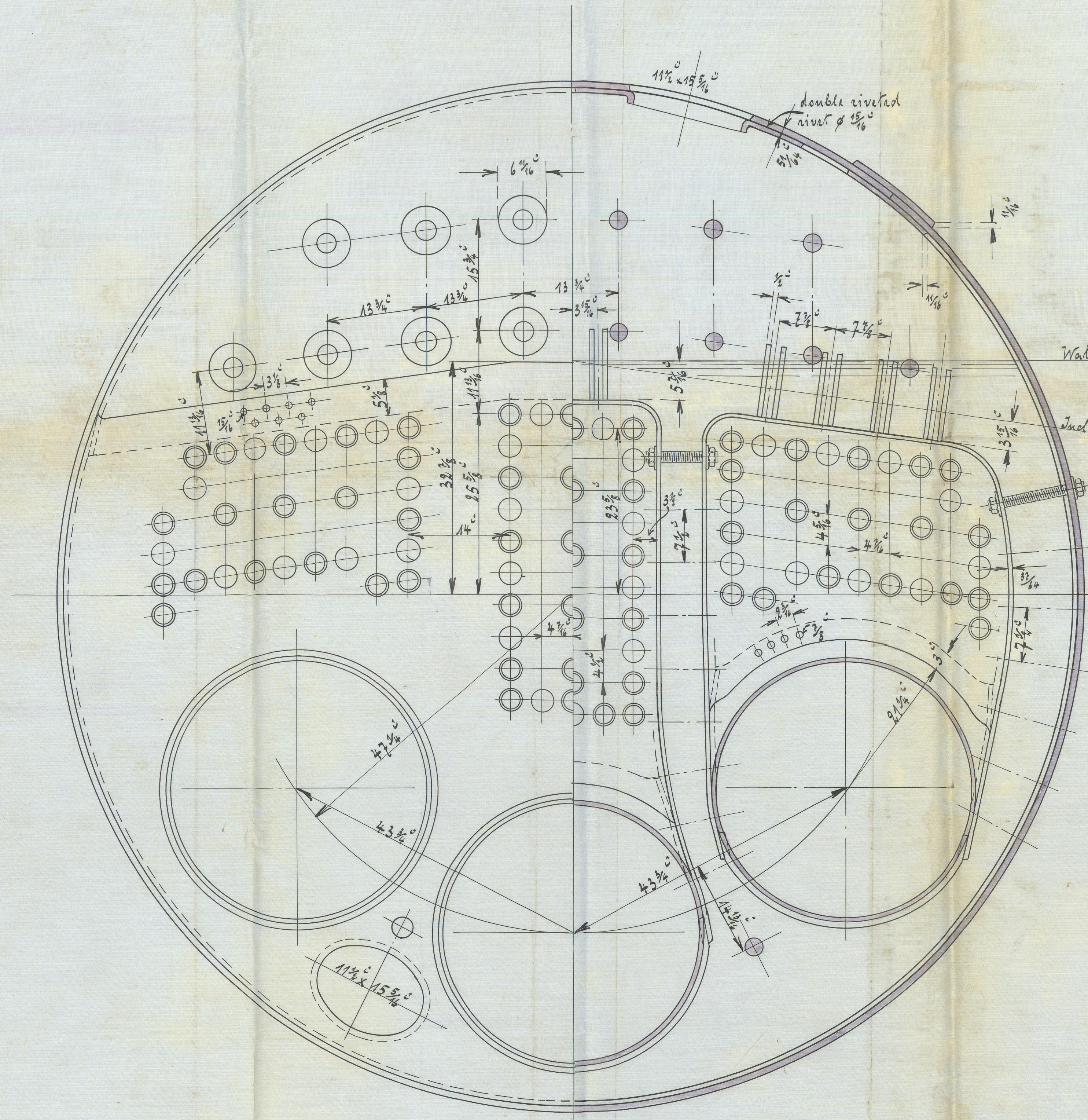
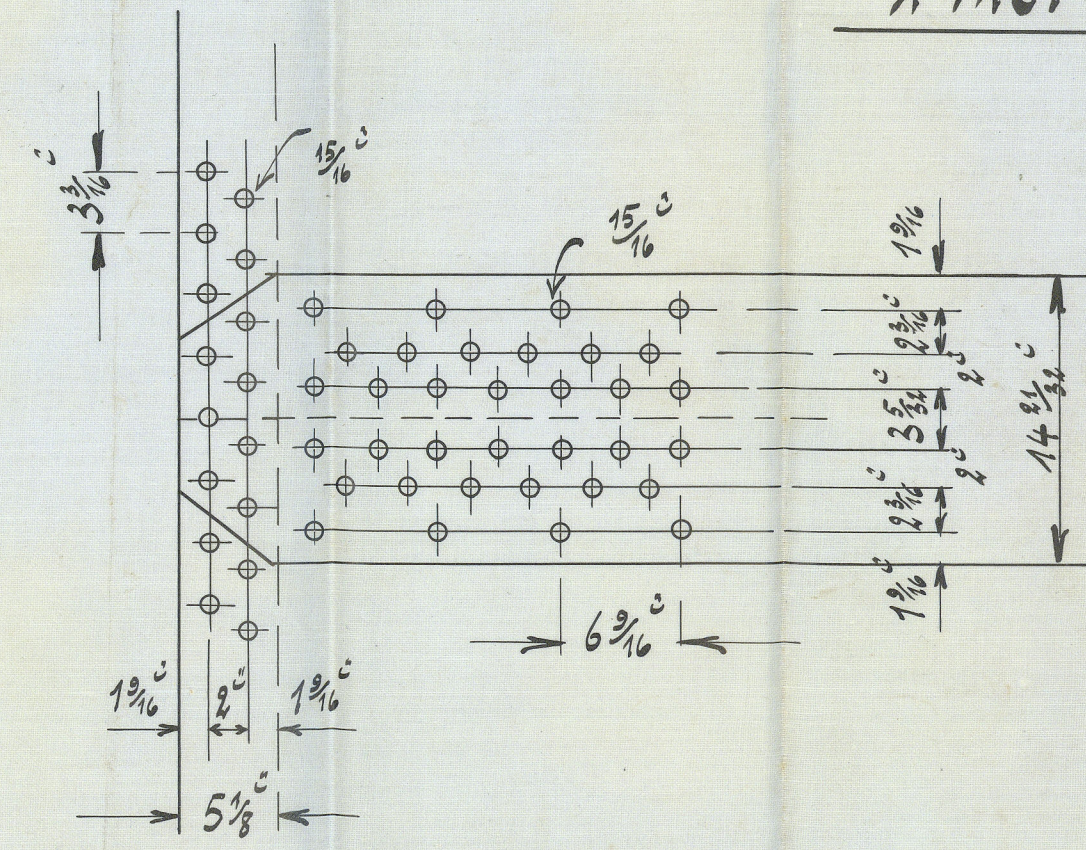
Elongation 25 per cent.

All stay bolts with nuts and washers; material Trinkenbizen
tensile strength 25,4 ÷ 28,6 tons per sq. inch.

Pl: 310 and 314.

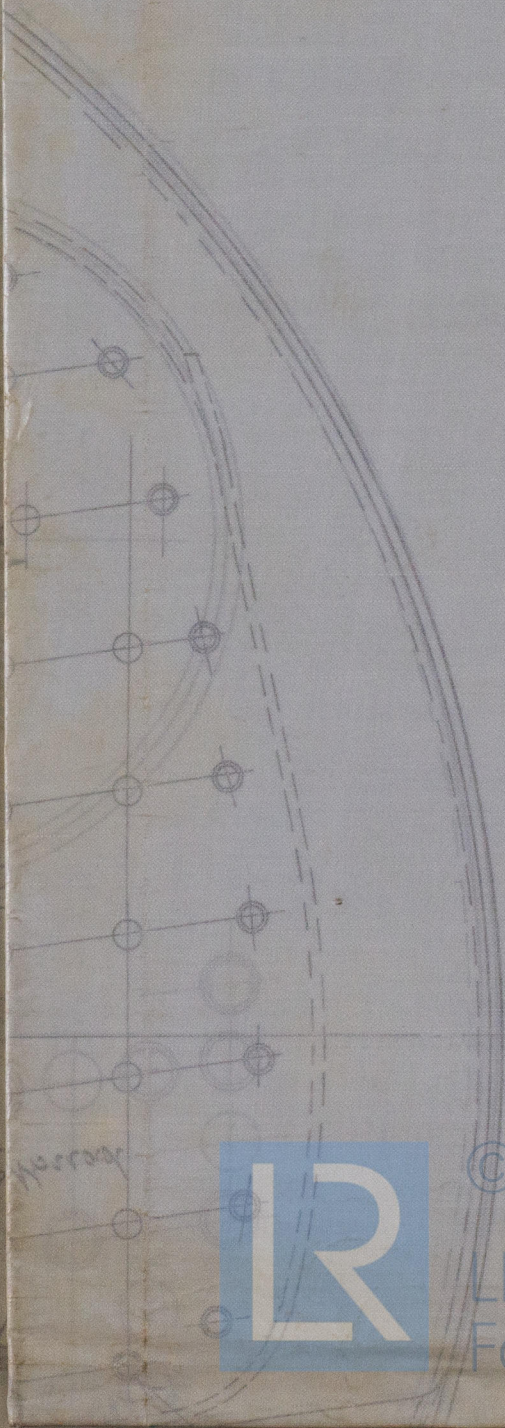
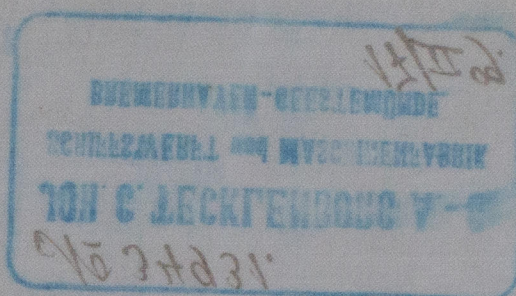
1:40.

24/2/09



No 34931.
JOH. C. TECKLENBURG A.-S.
SCHIFFSWERFT und MASCHINENFABRIK
BREMERHAVEN-GLESEMÜNDE
17/12 09.

1782 - 0013



© 2020

Lloyd's Register
Foundation

Administrative Foundation

S.S. "Regentum"
Rhn 1501.

S.S. "Adamstum"
Rhn 1522.

inches

