

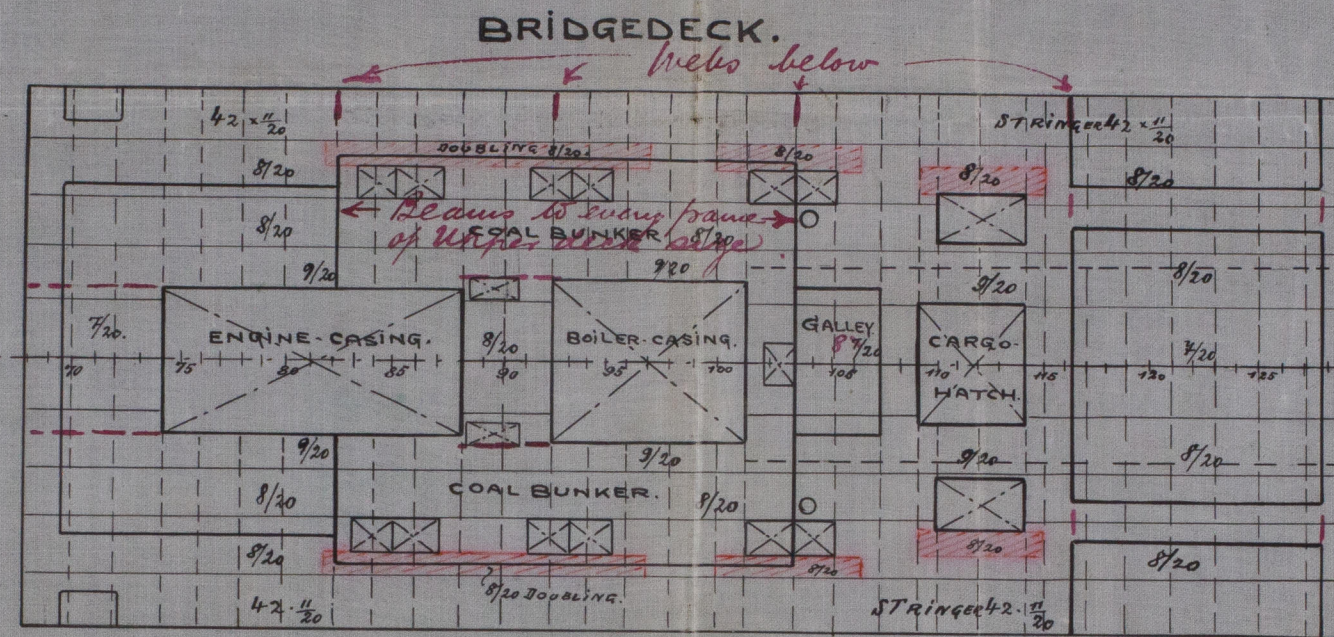
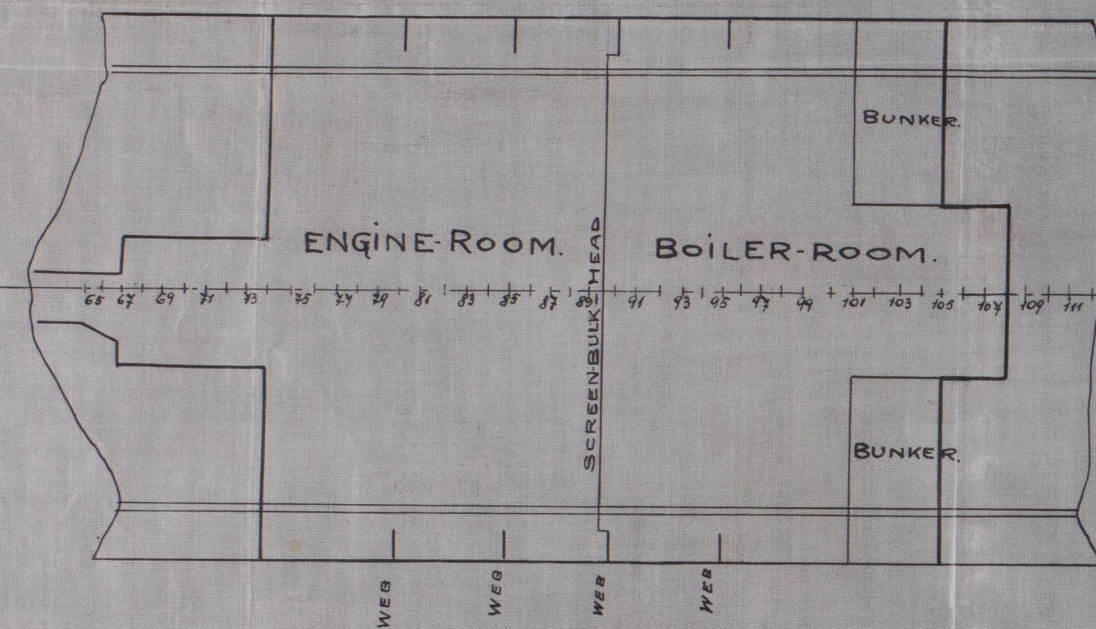


25.2.09.

S.S. N^o 233/34.

ARRANGEMENT OF STEELDECKS, WEBFAMES & BULKHEADS.

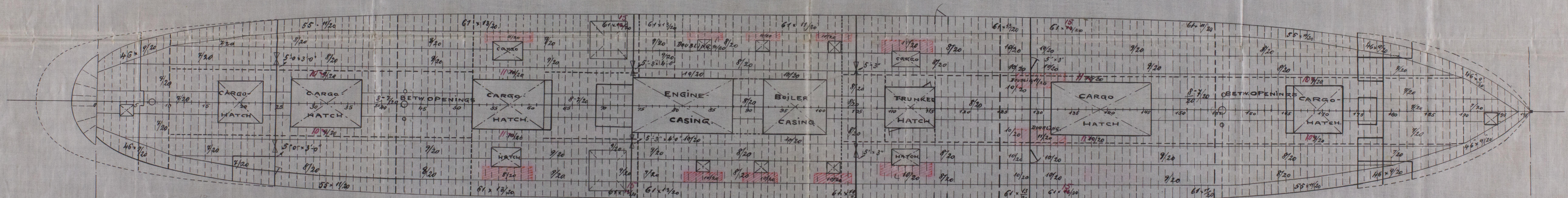
SCALE 1:200.



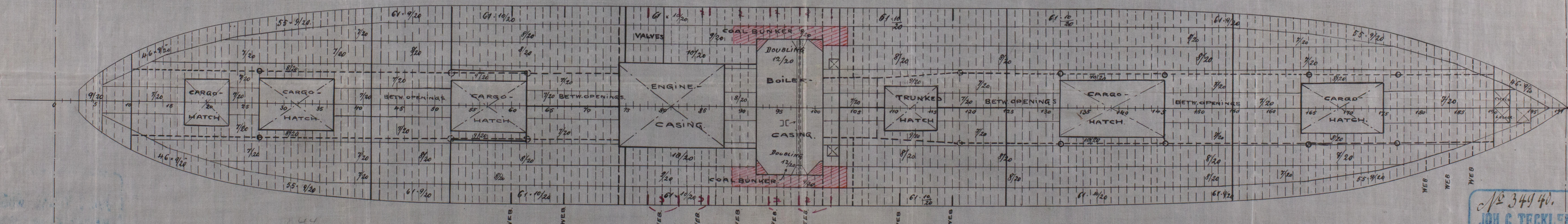
ALL CORNERS OF HATCHES & CASINGS TO BE STRENGTHENED WITH DOUBLING-PLATES AS PER RULE.

Hatch webs afore rafters as per Rule.

SPARDECK.



MAINDECK.



$\frac{3}{4}$ L.

$\frac{3}{5}$ L.

$\frac{1}{2}$ L.

$\frac{1}{2}$ L.

$\frac{3}{5}$ L.

$\frac{3}{4}$ L.

STRAKE OF MAINDECK PLATING INCREASED $\frac{1}{2}$ IN THICKNESS IN LENGTH OF HATCHES & $\frac{2}{20}$ IN LENGTH OF CASINGS.

1/2 344 40.
JOH. C. TECKLENBORG A.-G.
SCHIFFSWERFT und MASCHINENFABRIK
BREITENBURGER-STRASSE
1870

Lloyd's Register
Foundation

2.2.2

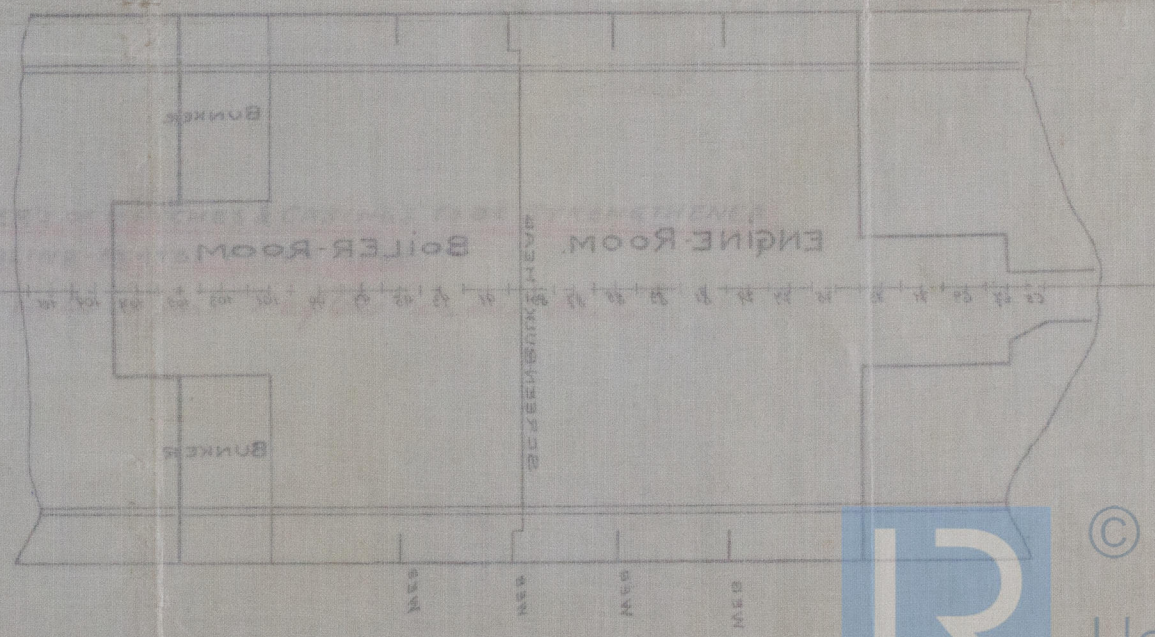
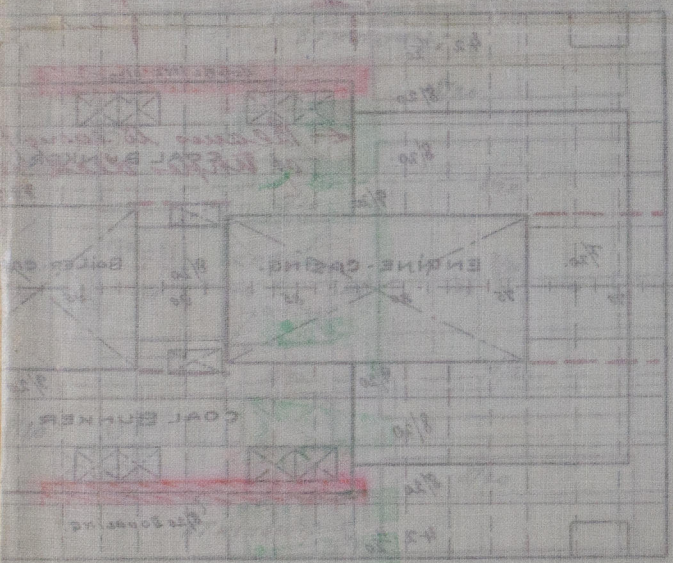
S.S. "Pagenturn"
Rhm 1504.

S.S. Adamstown
Rhm 1522



22.5.02

Bridges



SPAR

5100-0015



© 2020

Lloyd's Register
Foundation