

S.S.Nº 427.

DOLLARS THROUGHOUT TO
SURVEYORS SATISFACTION.



1949
 1948
 1947
 1946
 1945
 1944
 1943
 1942
 1941
 1940
 1939
 1938
 1937
 1936
 1935
 1934
 1933
 1932
 1931
 1930
 1929
 1928
 1927
 1926
 1925
 1924
 1923
 1922
 1921
 1920
 1919
 1918
 1917
 1916
 1915
 1914
 1913
 1912
 1911
 1910
 1909
 1908
 1907
 1906
 1905
 1904
 1903
 1902
 1901
 1900
 1899
 1898
 1897
 1896
 1895
 1894
 1893
 1892
 1891
 1890
 1889
 1888
 1887
 1886
 1885
 1884
 1883
 1882
 1881
 1880
 1879
 1878
 1877
 1876
 1875
 1874
 1873
 1872
 1871
 1870
 1869
 1868
 1867
 1866
 1865
 1864
 1863
 1862
 1861
 1860
 1859
 1858
 1857
 1856
 1855
 1854
 1853
 1852
 1851
 1850
 1849
 1848
 1847
 1846
 1845
 1844
 1843
 1842
 1841
 1840
 1839
 1838
 1837
 1836
 1835
 1834
 1833
 1832
 1831
 1830
 1829
 1828
 1827
 1826
 1825
 1824
 1823
 1822
 1821
 1820
 1819
 1818
 1817
 1816
 1815
 1814
 1813
 1812
 1811
 1810
 1809
 1808
 1807
 1806
 1805
 1804
 1803
 1802
 1801
 1800
 1799
 1798
 1797
 1796
 1795
 1794
 1793
 1792
 1791
 1790
 1789
 1788
 1787
 1786
 1785
 1784
 1783
 1782
 1781
 1780
 1779
 1778
 1777
 1776
 1775
 1774
 1773
 1772
 1771
 1770
 1769
 1768
 1767
 1766
 1765
 1764
 1763
 1762
 1761
 1760
 1759
 1758
 1757
 1756
 1755
 1754
 1753
 1752
 1751
 1750
 1749
 1748
 1747
 1746
 1745
 1744
 1743
 1742
 1741
 1740
 1739
 1738
 1737
 1736
 1735
 1734
 1733
 1732
 1731
 1730
 1729
 1728
 1727
 1726
 1725
 1724
 1723
 1722
 1721
 1720
 1719
 1718
 1717
 1716
 1715
 1714
 1713
 1712
 1711
 1710
 1709
 1708
 1707
 1706
 1705
 1704
 1703
 1702
 1701
 1700
 1699
 1698
 1697
 1696
 1695
 1694
 1693
 1692
 1691
 1690
 1689
 1688
 1687
 1686
 1685
 1684
 1683
 1682
 1681
 1680
 1679
 1678
 1677
 1676
 1675
 1674
 1673
 1672
 1671
 1670
 1669
 1668
 1667
 1666
 1665
 1664
 1663
 1662
 1661
 1660
 1659
 1658
 1657
 1656
 1655
 1654
 1653
 1652
 1651
 1650
 1649
 1648
 1647
 1646
 1645
 1644
 1643
 1642
 1641
 1640
 1639
 1638
 1637
 1636
 1635
 1634
 1633
 1632
 1631
 1630
 1629
 1628
 1627
 1626
 1625
 1624
 1623
 1622
 1621
 1620
 1619
 1618
 1617
 1616
 1615
 1614
 1613
 1612
 1611
 1610
 1609
 1608
 1607
 1606
 1605
 1604
 1603
 1602
 1601
 1600
 1599
 1598
 1597
 1596
 1595
 1594
 1593
 1592
 1591
 1590
 1589
 1588
 1587
 1586
 1585
 1584
 1583
 1582
 1581
 1580
 1579
 1578
 1577
 1576
 1575
 1574
 1573
 1572
 1571
 1570
 1569
 1568
 1567
 1566
 1565
 1564
 1563
 1562
 1561
 1560
 1559
 1558
 1557
 1556
 1555
 1554
 1553
 1552
 1551
 1550
 1549
 1548
 1547
 1546
 1545
 1544
 1543
 1542
 1541
 1540
 1539
 1538
 1537
 1536
 1535
 1534
 1533
 1532
 1531
 1530
 1529
 1528
 1527
 1526
 1525
 1524
 1523
 1522
 1521
 1520
 1519
 1518
 1517
 1516
 1515
 1514
 1513
 1512
 1511
 1510
 1509
 1508
 1507
 1506
 1505
 1504
 1503
 1502
 1501
 1500
 1499
 1498
 1497
 1496
 1495

connected to
concrete satisfaction

STYLE.
Pillars

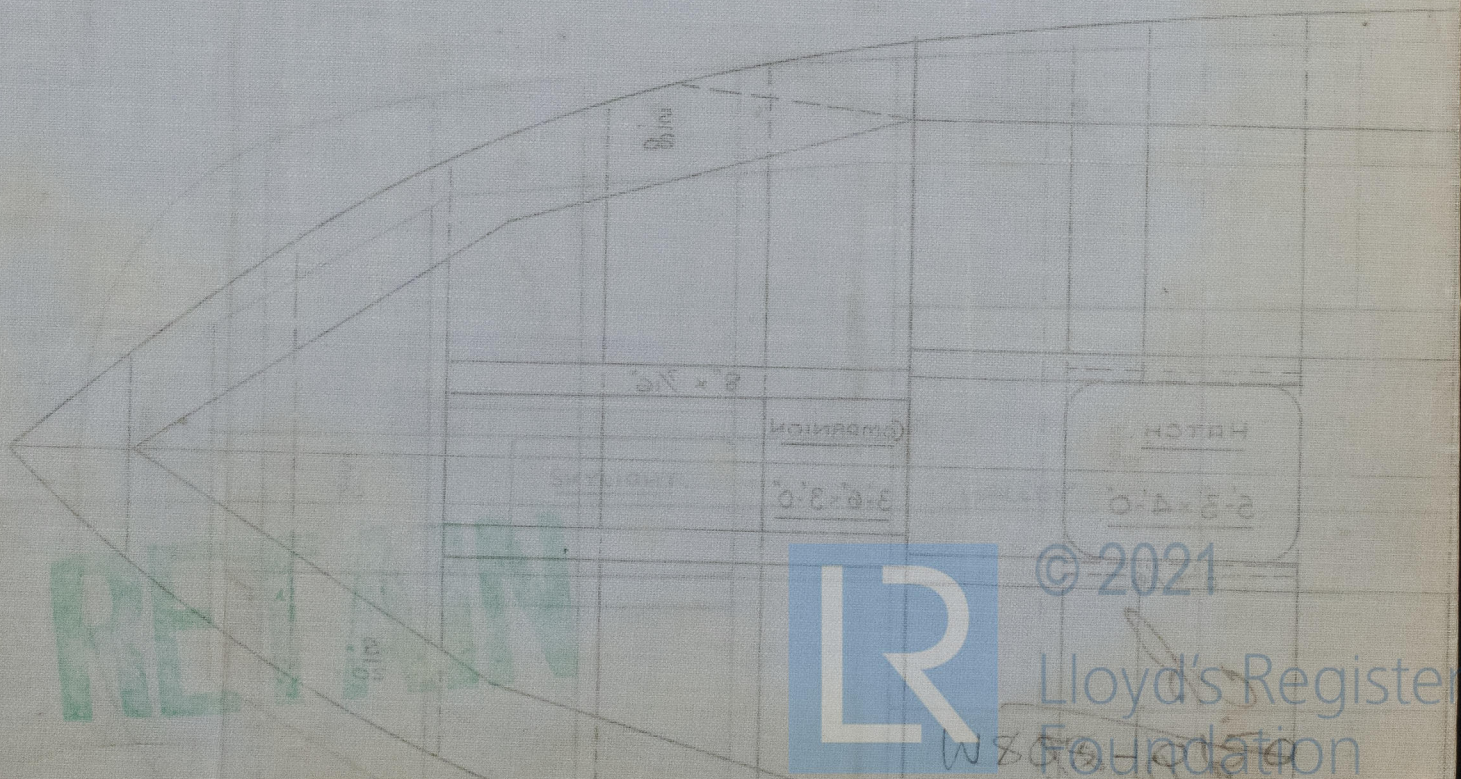
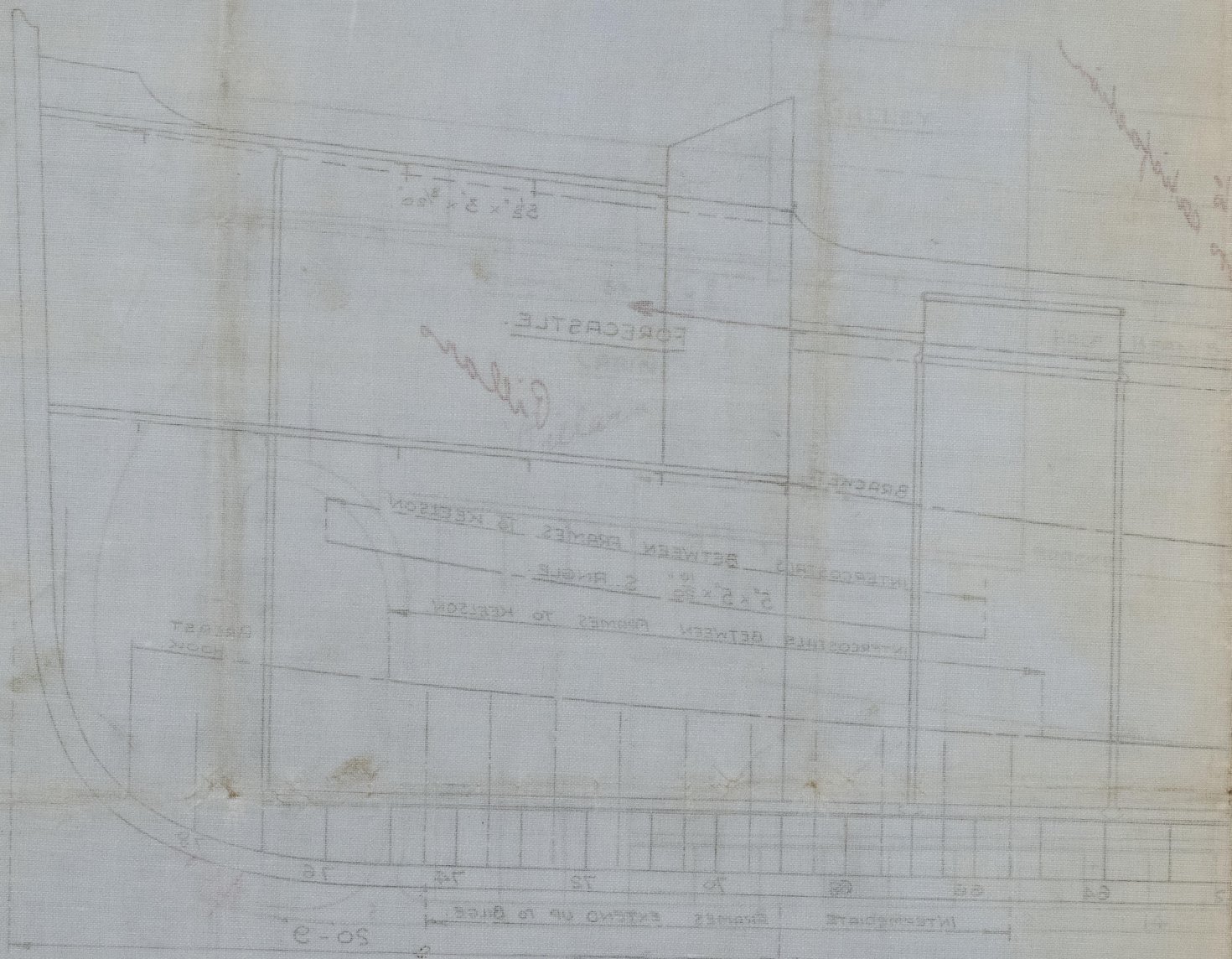
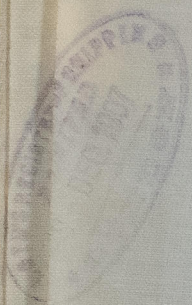
außen
7.12.07

Cochran & Sons.

No 427

Profile & Deck Plan
s/s 'onward'

Hull Report No. 19990



© 2021

Lloyd's Register
Foundation