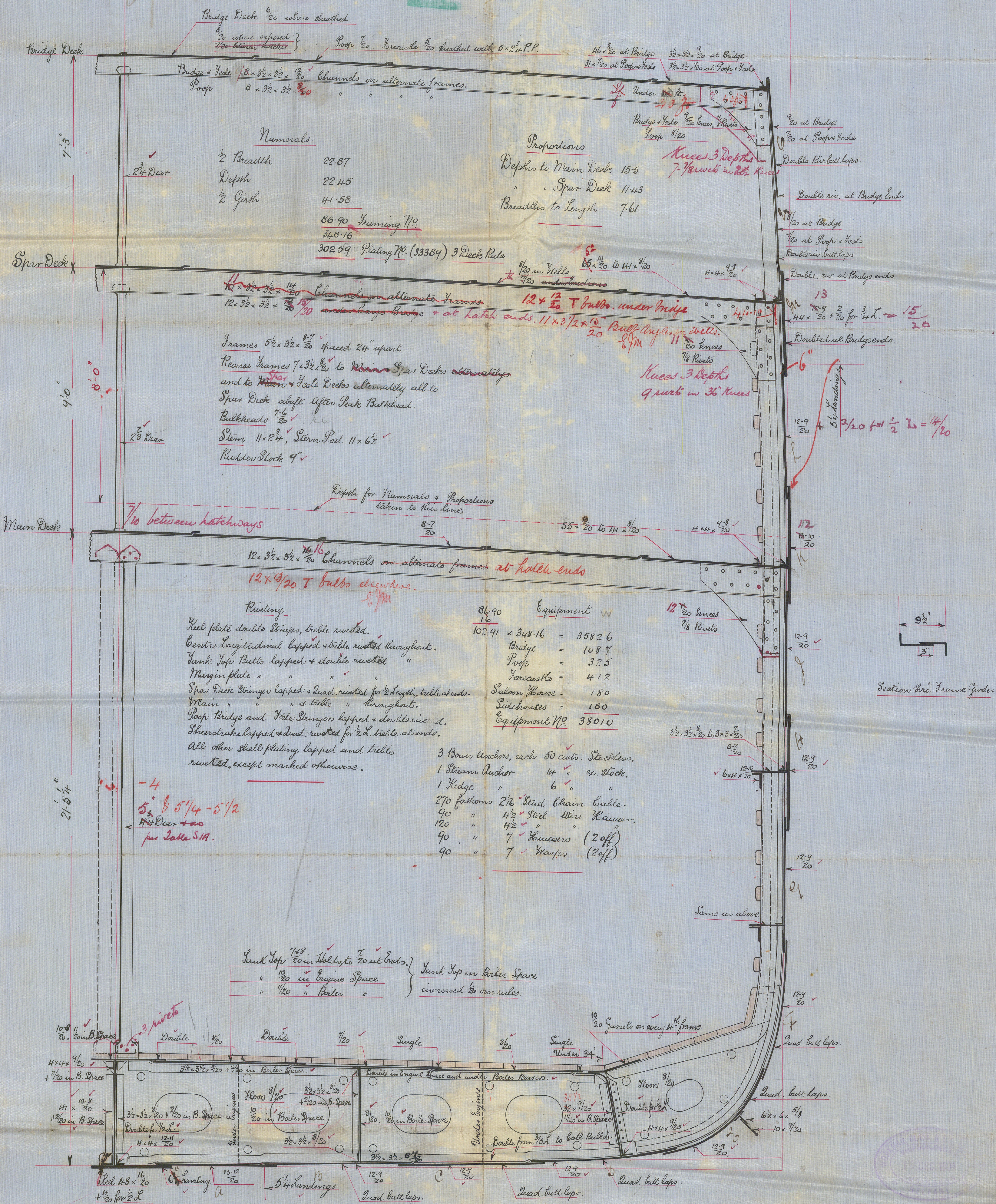


Midship Section No 224 S.S.

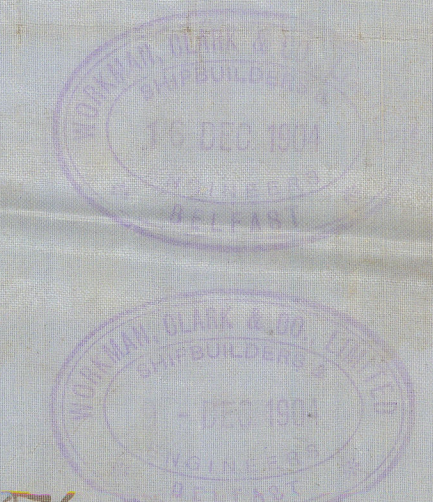
To class 100A.1. Spar Deck Rule.

Dimensions 350' x 45'-9" x 29'-6" Mld. to Spar Deck.

Scale 1/2" = 1 foot.



Shell plating entirely within the range of Double bottom, including Keel & Garboard Strakes, reduced to where 1/2" and above.
Two Strakes adjoining garboard maintain their midship thickness to Collision Bulkhead.



Messrs Workman Clark & Co

S.S. 224

Midship Section

Drator
Bel 5969

35

[Faint handwritten notes or bleed-through from the reverse side of the page.]

W806-0080