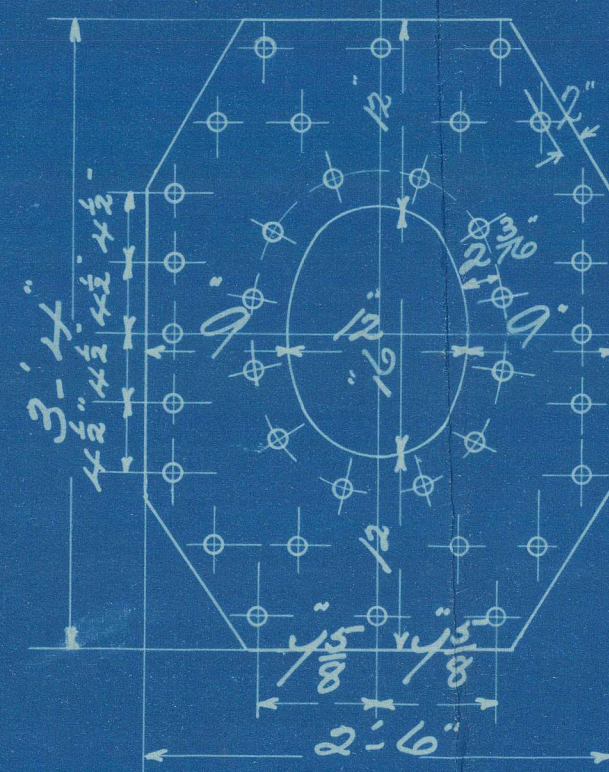


DIAM OF BOILER 13'-0" ins. dia.  
 LENGTH OF DO 10'-2" inside bottom plates.  
 NUMBER OF TUBES 180  
 LENGTH OF DO 6'-6" between plates  
 DIAM OF DO 3 1/2" AREA THRO TUBES 9.3 sq ft  
 HEATING SURFACE IN TUBES 1040 sq ft  
 TOTAL HEATING SURFACE 1400 sq ft  
 FIRE BAR SURFACE 4'-6" bars 40 1/2 sq ft  
 DIAM OF SAFETY VALVES  
 CUBIC FEET OF STEAM SPACE 290 (6" above C.O. top)  
 WORKING PRESSURE 180 lbs.

24/1/14

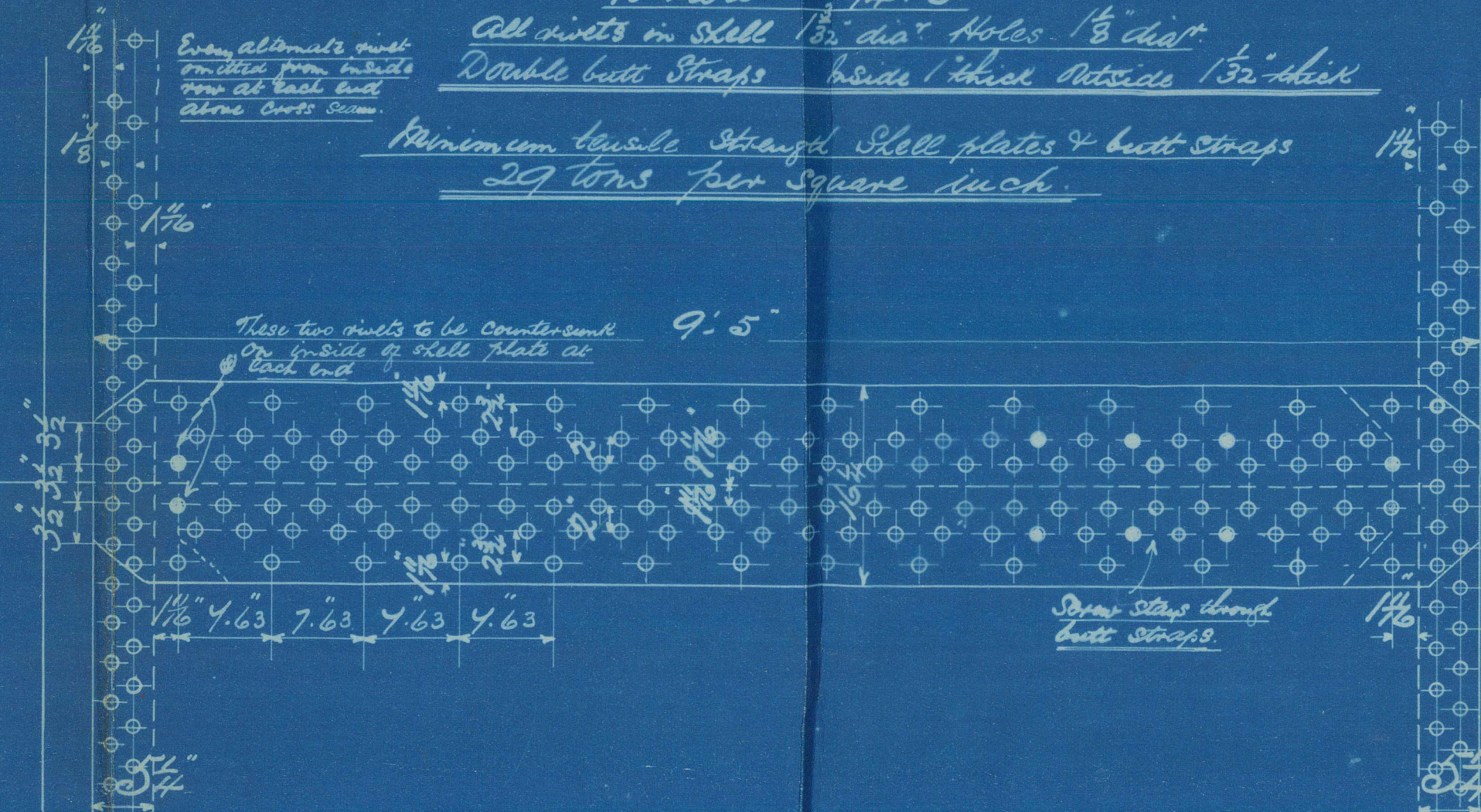
Double plate 1/2" thick  
 Rivets 1/2" dia. 1/2" pitch  
 Rivets outside shell and stay  
 and longitudinal.



Note!  
 Stays on handhole doors are  
 not to project through rivets when  
 rivets are put up.

Circumferential seams 3/4" pitch  
 7/8" plate 64.5  
 7/8" rivets 47  
 Longitudinal seams 7/8" pitch  
 7/8" plate 85.2  
 7/8" rivets 94.0

All rivets in shell 1/2" dia. 1/2" pitch  
 Double butt straps inside 1/2" thick outside 1/2" thick  
 Minimum tensile strength shell plates & butt straps  
 27 tons per square inch.

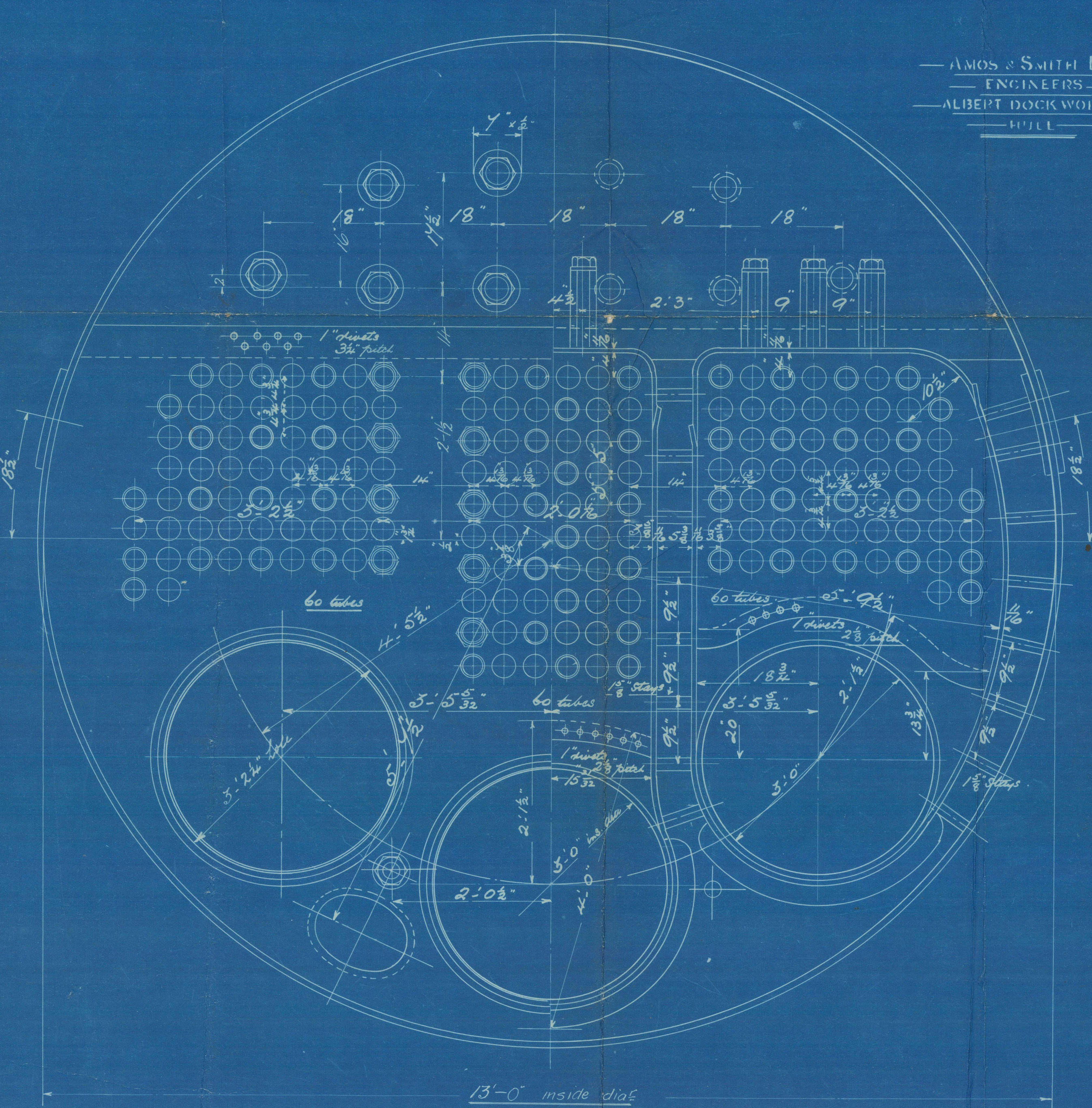


Note! The plates rivets & stays of steel by the  
 Siemens Martin process. All rivet holes drilled  
 throughout the boiler, those in shell after the plates  
 are bent. All flanged plates to be annealed after  
 the plates are bent. Stays are not to be welded  
 Tubes are of iron.

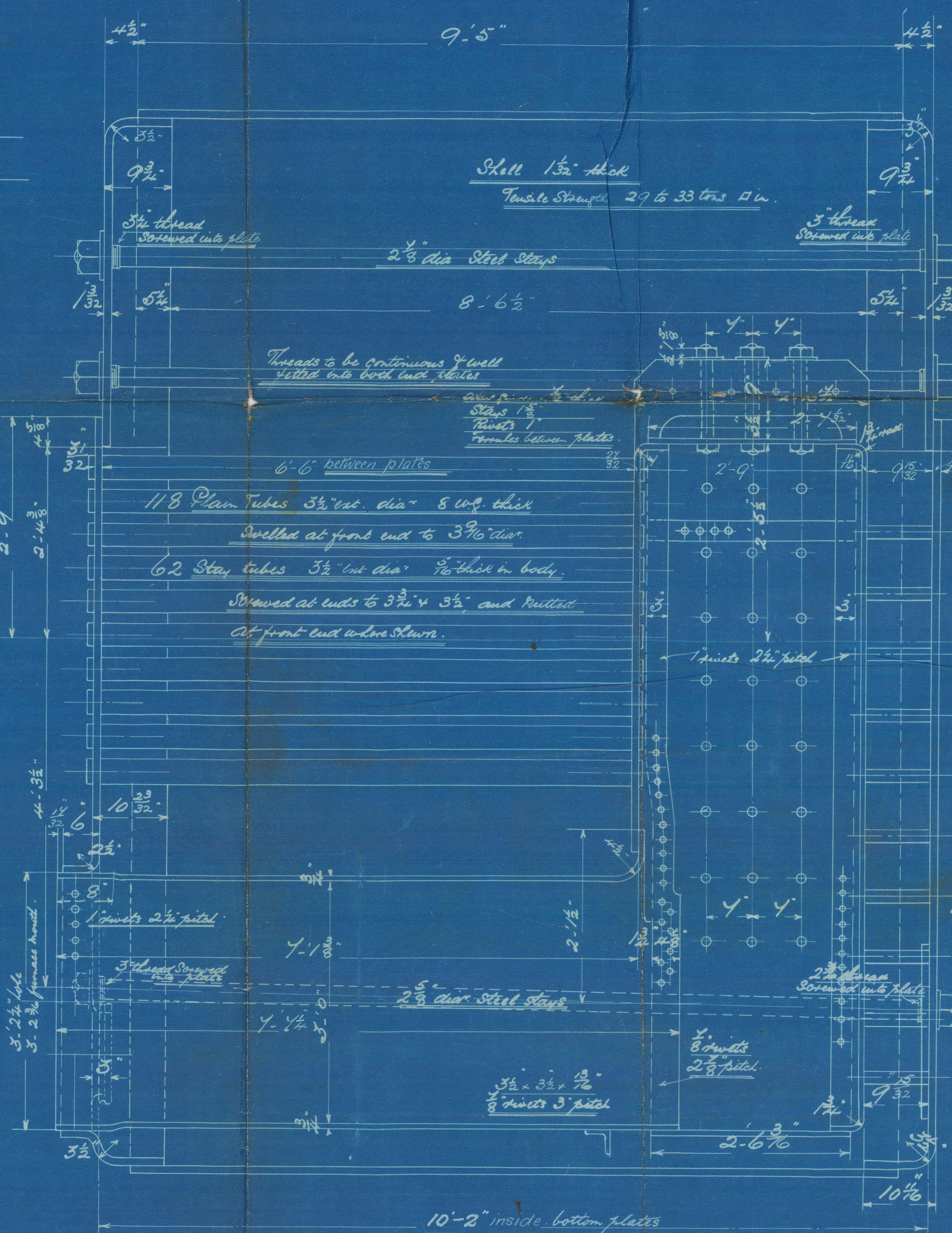
The Combustion Chamber stays are screwed into both  
 plates and fitted with a nut at each end.  
 Washers on outside of shell only, none inside C.C.

Particulars of Staying.

Stay.	Dia.	N° of threads per ins.	Efficiency as per ins.
Steam space stays.	3"	6	6.10
Tube plate "	—	—	—
Bottom Stays.	2 1/2"	6	5.05
Stay tubes.	3 1/2"	9	2.34
C.C. Stays	1 1/2"	10	1.46
"	1 1/2"	10	2.06
"	1 1/2"	10	2.34

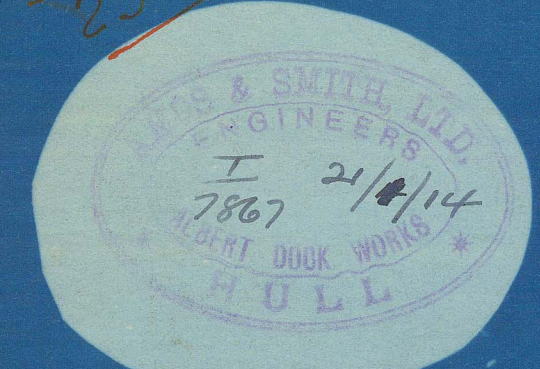


AMOS & SMITH LTD  
 ENGINEERS  
 ALBERT DOCK WORKS  
 LONDON



One to be taken at  
 C.O. Stays at the top  
 One to be taken at the  
 bottom of the boiler  
 One to be taken at the  
 side of the boiler  
 One to be taken at the  
 front of the boiler

Double 3/4" thick  
 1 rivets 6" pitch.



10451

4 STEEL BOILERS N° 2502-3-4-5

TITLE Steel Boiler  
 FOR WHOM Amos & Smith.  
 DATE 15/1/14  
 ORDER 2502-3-4-5  
 IN MADE  
 SCALE 1" = 1'

W 804-508 W



A S 85—2000—4/13—W

**From AMOS & SMITH, Ltd., HULL.**

**Enclosure for**

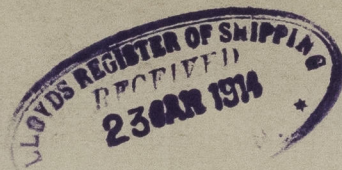
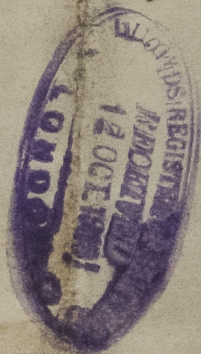
*Lloyd's Surveyors*  
*Hull*

2 1/2  
W806-005712



Amos & Smith Boilers  
No 2502-3-4-5.

W.P. = 1807 lbs.



s/o Orianda	Hull Rpt	no. 27921
" Vernoe	- -	27977
" Lemberg	- -	28122
" Longdet-	"	28142

RETAIN

No 2505  
No 3039  
Lloyd's test  
360 lbs  
18-11-14 FLS

849  
719  
149  
649  
049



© 2021

Lloyd's Register  
W806-0057



LLOYD'S REGISTER  
OF SHIPPING.  
22 JAN. 1914  
J. H. L. L.



© 2021

Lloyd's Register  
Foundation