

BOILER 568-569

20/1/15

TOTAL HEATING SURFACE MEASURED OUTSIDE = 156.5 M² = 1680.5 sq. ft.

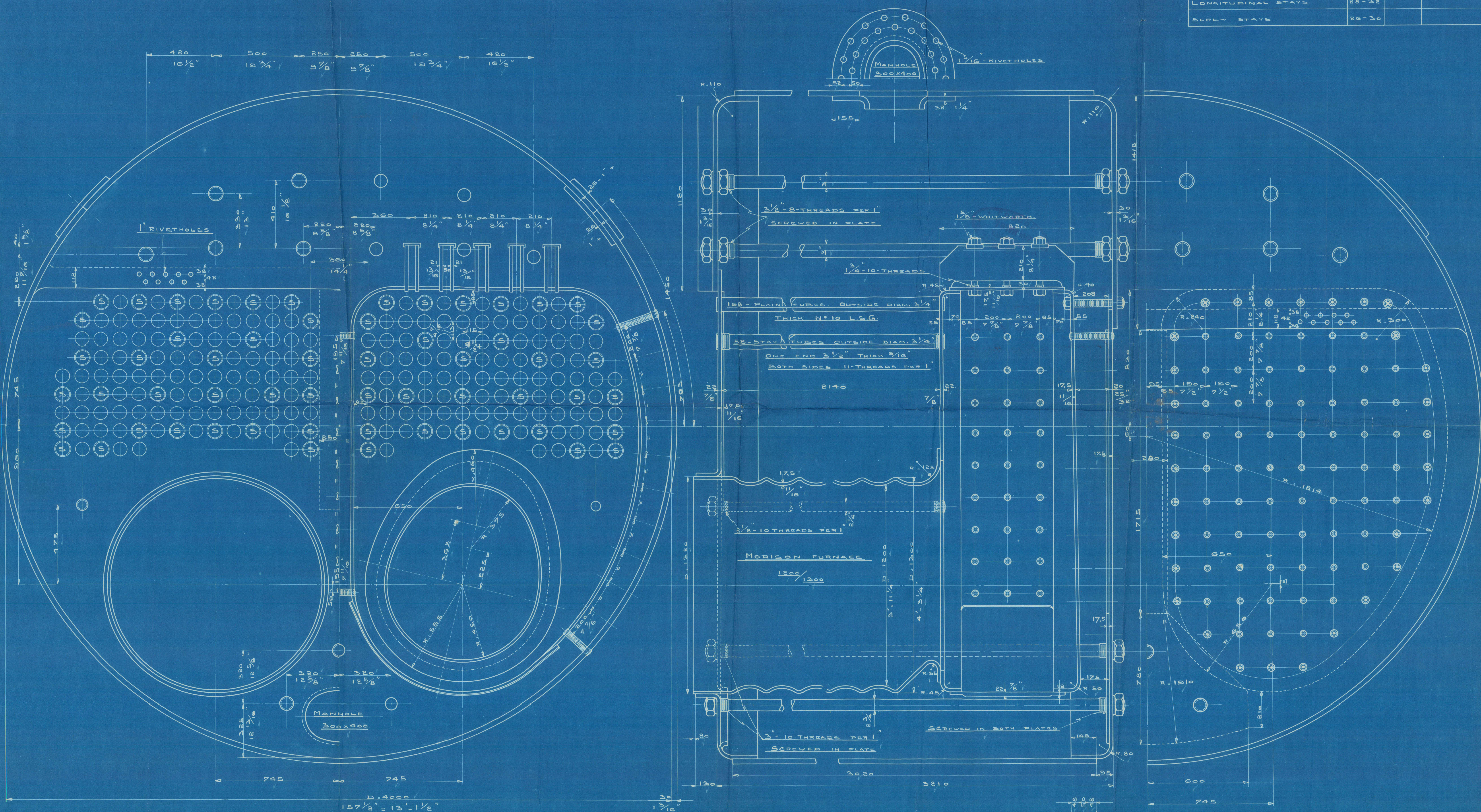
INSIDE = 142.1 M² = 1530.5 sq. ft.

CONSTRUCTED ACCORDING TO LLOYD'S REGISTER RULES AND DUTCH LAW.

WORKING PRESSURE 152 L.B.S. = 12.5 K.G./CM.²

QUALITY OF MATERIAL.

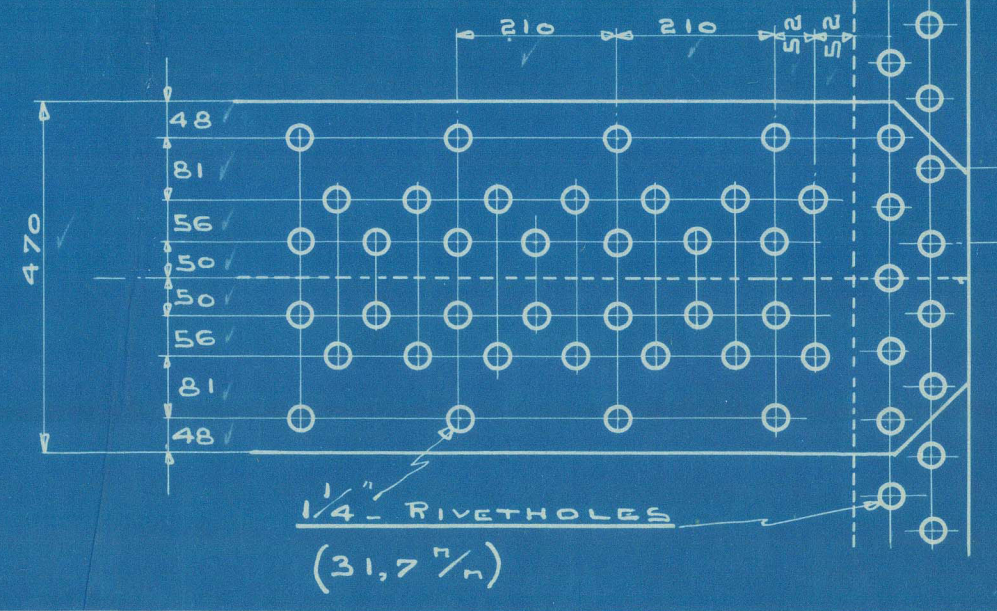
DESCRIPTION	TENSILE STRENGTH TONS/ INCH ²	K.G. CM. ²	MINIMUM ELONGATION
SHELL PLATE & BUTT STRAPS	28.8-32	45.5-52	20% IN 8"
FLANGED PLATES, COMBUSTION CHAMBER PLATES, DOUBLING PLATES	26-30	41-47.5	23% IN 8"
ONFRONTS & GIRDERS			
FURNACES	28.5-27	35.6-42.8	25% IN 8"
LONGITUDINAL STAYS	28-32		
SCREW STAYS	26-30		



- (S) - STAY TUBES.
- (R) - FIREBOX STAYS - 2" 10-THREADS FITTED WITH NUTS.
- (O) - " - 1 3/4" 10 " " " " " "
- (O) - " - 1 1/2" 10 " " " " " " RIVETED OVER.

WHERE STAYS ARE NOT SQUARE ON PLATES
WASHERS TO BE FITTED UNDER NUTS

VOOR BESTELTEKENING KETELMATERIAAL ZIE TEKENING N° 631-B.



PITCH OUTSIDE 34 7/8"
19.1.15
S. J. B.

Machine Bargerhout's Fabriekfabriek & Scheepswerk.
No. 1103-A
KETEL - 568-569
BY MACHINE 332
Schiedamschen 1:10 JANUARI-1915
Reg. No. 1103-A

W 106-0022

$\frac{5}{8}$ Otto Letra
Rms 6959.

Blrs criss 568, 569 (Burgund).
Yas 4 2 7 (Meyn 2 alt 10 mmv)
mms (Hudj, Peter)

Roll. Rep N 9907



30/1/12

RETAIN



© 2021

W806-0022

Lloyd's Register
Foundation